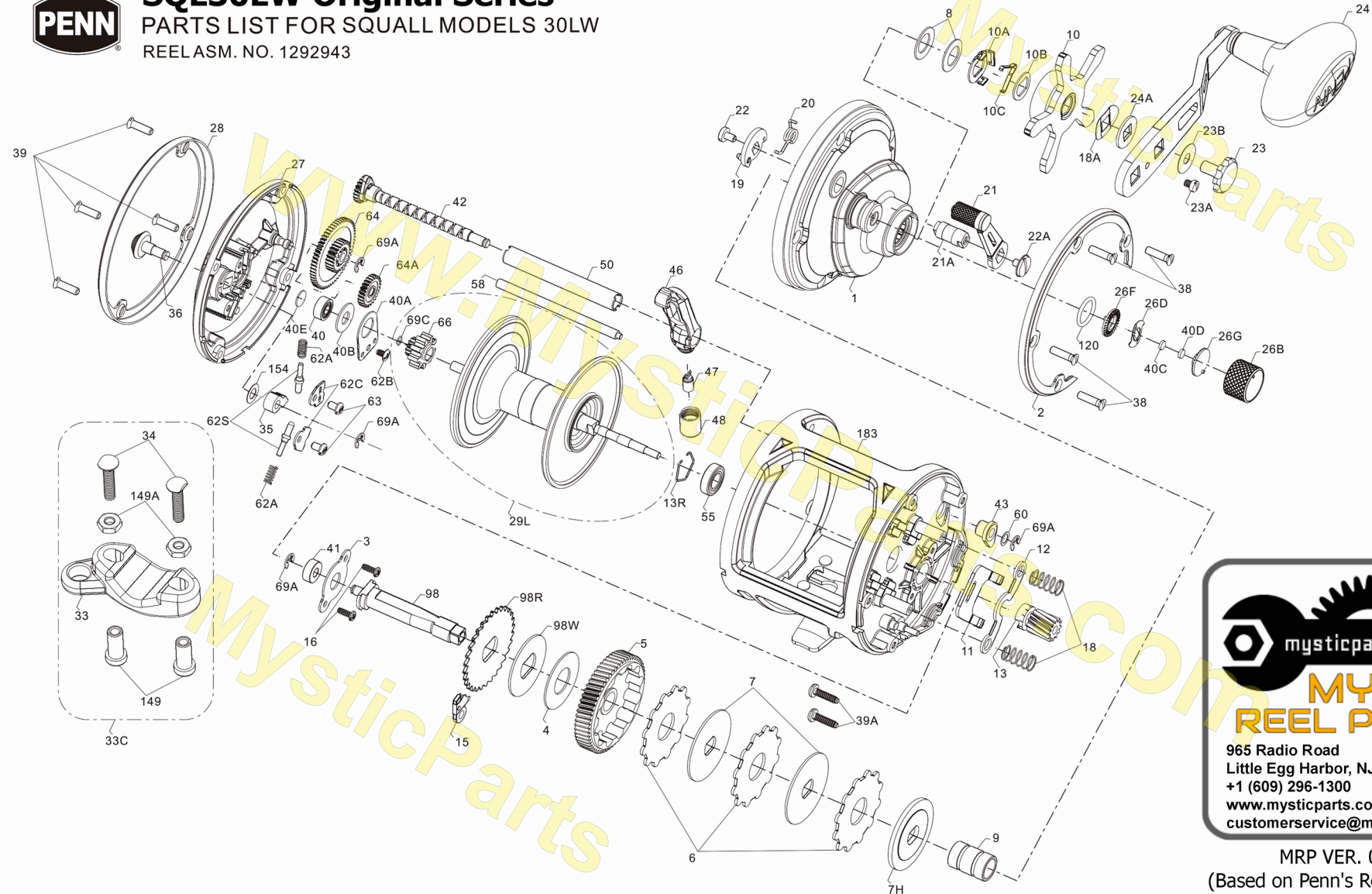




SQL30LW Original Series

PARTS LIST FOR SQUALL MODELS 30LW

REEL ASM. NO. 1292943



mysticparts.com

MYSTIC REEL PARTS

965 Radio Road
 Little Egg Harbor, NJ 08087
 +1 (609) 296-1300
 www.mysticparts.com
 customerservice@mysticparts.com

MRP VER. 013121
 (Based on Penn's Rev 1, 4-6-2013)

Penn Reel Parts list for Model: SQL30LW Squall 30 Levelwind (1292944)

| KEY | Penn Part | PureFishing | DESCRIPTION | KEY | Penn Part | PureFishing | DESCRIPTION |
|-----|-------------|-------------|----------------------------------|------|-------------|-------------|------------------------------|
| NO | Number | Part# | | NO | Number | Part# | |
| 1 | 1-SQL30LW | 1308775 | HANDLE SIDE PLATE | 38 | 38-SQLLW | 1308760 | SCREW (4 REQ.) |
| 2 | 2-SQL30LW | 1308776 | RING, HANDLE SIDE PLATE | 39 | 39-SQLLW | 1308761 | SCREW (4 REQ.) |
| 3 | 3-SQL15LW | 1308743 | BRIDGE | 39A | 39A-30SLD | 1258668 | SCREW, SELF-TAPPING (2 REQ.) |
| 4 | 4-FTH20LW | 1188703 | FIBER WASHER | 40 | 40-FTH20LW | 1188661 | BALL BEARING |
| 5 | 5-SQL30LW | 1308777 | MAIN GEAR | 40A | 40A-FTH20LW | 1188663 | BALL BEARING RETAINER |
| 6 | 6-FTH20LW | 1188705 | FRICTION DRAG WASHER (3 REQ.) | 40B | 40B-FTH20LW | 1188662 | FELT WASHER |
| 7 | 7-FTH20LW | 1188706 | KEYED METAL DRAG WASHER (2 REQ.) | 40C | 40C-525MAG2 | 1208115 | METAL THRUST WASHER |
| 7H | 7H-FTH20LW | 1188707 | HEAVY METAL DRAG WASHER | 40D | 40D-525MAG2 | 1125771 | RUBBER THRUST WASHER |
| 8 | 8-FTH20LW | 1188709 | TENSION SPRING WASHER (2 REQ.) | 40E | 40E-SQLLW | 1308762 | BRONZE WASHER |
| 9 | 9-FTH20LW | 1188708 | SLEEVE, SPACER SLEEVE | 41 | 41-SQL15LW | 1308763 | BUSHING |
| 10 | 10-FTH20LW | 1188713 | STAR DRAG | 42 | 42-FTH25LW | 1188725 | WORM SHAFT ASSEMBLY |
| 10A | 10A-FTH20LW | 1188711 | STAR CLICK RETAINER | 43 | 43-FTH20LW | 1188669 | WORM SHAFT BUSHING |
| 10B | 10B-FTH20LW | 1188710 | STAR CLICK WASHER | 46 | 46-FTH40LW | 1208129 | LINE GUIDE ASSEMBLY |
| 10C | 10C-525MAG2 | 1188712 | STAR CLICK SPRING | 47 | 47-FTH20LW | 1188672 | LINE GUIDE PAWL |
| 11 | 11-SQL15LW | 1308745 | ECCENTRIC JACK | 48 | 48-FTH20LW | 1208120 | LINE GUIDE NUT |
| 12 | 12-SQL30LW | 1308778 | PINION YOKE | 55 | 55-SQL30LW | 1308787 | BALL BEARING |
| 13 | 13-SQL30LW | 1308779 | PINION GEAR | 58 | 58-SQL30LW | 1308788 | LINE GUIDE POST |
| 13R | 13R-SQL30LW | 1308780 | RETAINING RING | 60 | 60-FTH20LW | 1188670 | WORM SHAFT WASHER |
| 15 | 15-FTH20LW | 1188675 | ANTI REVERSE DOG | 62A | 62A-310 | 1184033 | CLICK SPRING (2 REQ.) |
| 16 | 16-SQLLW | 1308749 | SCREW (2 REQ.) | 62B | 62B-SQLLW | 1188722 | BEARING RETAINER SCREW |
| 18 | 18-FTH20LW | 1188688 | PINION YOKE SPRING (2 REQ.) | 62C | 62C-321LH | 1184041 | CLICK SPRING COVER (2 REQ.) |
| 18A | 18A-FTH20LW | 1188714 | KEYED SPRING WASHER | 62S | 62S-SQLLW | 1308765 | CLICK PIN (2 REQ.) |
| 20 | 20-FTH20LW | 1188689 | ECCENTRIC SPRING | 63 | 63-500S | 1184052 | CLICK SPRING SCREW (2 REQ.) |
| 21 | 21-SQL30LW | 1308781 | ECCENTRIC LEVER | 64 | 64-FTH20LW | 1188658 | IDLER GEAR |
| 21A | 21A-SQL30LW | 1308782 | ECCENTRIC PIN | 64A | 64A-FTH40LW | 1208073 | IDLER GEAR |
| 22 | 22-FTH20LW | 1188690 | ECCENTRIC SCREW | 66 | 66-FTH20LW | 1188678 | SPOOL GEAR CLICK RATCHET |
| 22A | 22-525MAG2 | 1214705 | ECCENTRIC LEVER SCREW | 69A | 69A-FTH20LW | 1188659 | RETAINER 3*7 (4 REQ.) |
| 23 | 23-FTH20LW | 1208117 | HANDLE NUT | 69C | 69C-FTH20LW | 1188677 | RETAINER "C" RING |
| 23A | 23A-FTH20LW | 1188717 | HANDLE LOCK SCREW | 98 | 98-FTH20LW | 1188700 | MAIN GEAR SHAFT |
| 23B | 23B-FTH20LW | 1207784 | HANDLE SCREW WASHER | 98R | 98R-FTH20LW | 1188701 | ANTI REVERSE RATCHET |
| 24 | 24-SQLSD | 1276618 | HANDLE | 98W | 98W-FTH20LW | 1188702 | RATCHET THRUST WASHER |
| 24A | 24A-FTH20LW | 1188715 | HANDLE THRUST WASHER | 120 | 120-SQLLW | 1308766 | O-RING |
| 26B | 26B-SQLLW | 1308753 | SPOOL TENSION CAP | 149 | 149-45 | 1184702 | ROD CLAMP NUT (2 REQ.) |
| 26D | 26D-525MAG2 | 1125769 | SPOOL TENSION CLICK SPRING | 149A | 149-200 | 1184706 | ROD CLAMP HEX NUT (2 REQ.) |
| 26F | 26F-525MAG2 | 1125768 | SPOOL TENSION RATCHET "INNER" | 154 | 154-117 | 1184721 | CLICK BUTTON WASHER |
| 26G | 26G-525MAG2 | 1125772 | SPOOL TENSION RATCHET "OUTER" | 183 | 183-SQL30LW | 1308789 | FRAME |
| 27 | 27-SQL30LW | 1308783 | NON-HANDLE SIDE PLATE | | | | |
| 28 | 28-SQL30LW | 1308784 | NON-HANDLE SIDE RING | | | | |
| 29L | 29L-SQL30LW | 1308786 | ALUMINUM SPOOL | | | | |
| 33 | 33N-113 | 1182754 | ROD CLAMP | | | | |
| 34 | 34-45 | 1182788 | ROD CLAMP SCREW (2 REQ.) | | | | |
| 34C | 34C-45 | 1182862 | ROD CLAMP SCREWS W/ NUTS | | | | |
| 35 | 35-SQLLW | 1308758 | CLICK TONGUE | | | | |
| 36 | 36-SQLLW | 1308759 | CLICK BUTTON | | | | |

MYSTIC REEL PARTS REVISION!

NOTE:
 Many of www.mysticparts.com schematics include changes that were either made by Penn, or errors found and corrected by our parts dept.
 MRP VER. 013121 (Based on Penn's Rev 2, 9-19-2014)
 1/8/2024 PART DESCRIPTION FOR KEY #9 CORRECTED

PENN ERRORS ON THE REV. 1 SCHEMATICS

| KEY | Penn Part | PureFishing | DESCRIPTION |
|------|--------------|-------------|---|
| NO | Number | Part# | |
| 19 | 19-SQL50LW | 1308822 | ECCENTRIC was incorrect! Use ---> |
| 50 | 50-FTH25LW | 1188728 | WORM SHIELD was incorrect! Use ---> |
| 154A | 154A-SQL15LW | 1308767 | MAIN GEAR SHAFT WASHER <---- WAS ON REV 1 BUT REMOVED FROM REV 2. |

ACTUAL PARTS THAT ARE IN REEL ARE:

| KEY | Penn Part | PureFishing | DESCRIPTION |
|-----|------------|-------------|-------------|
| NO | Number | Part# | |
| 19 | 19-SQL15LW | 1308750 | ECCENTRIC |
| 50 | 50-SQL20LW | 1308773 | WORM SHIELD |