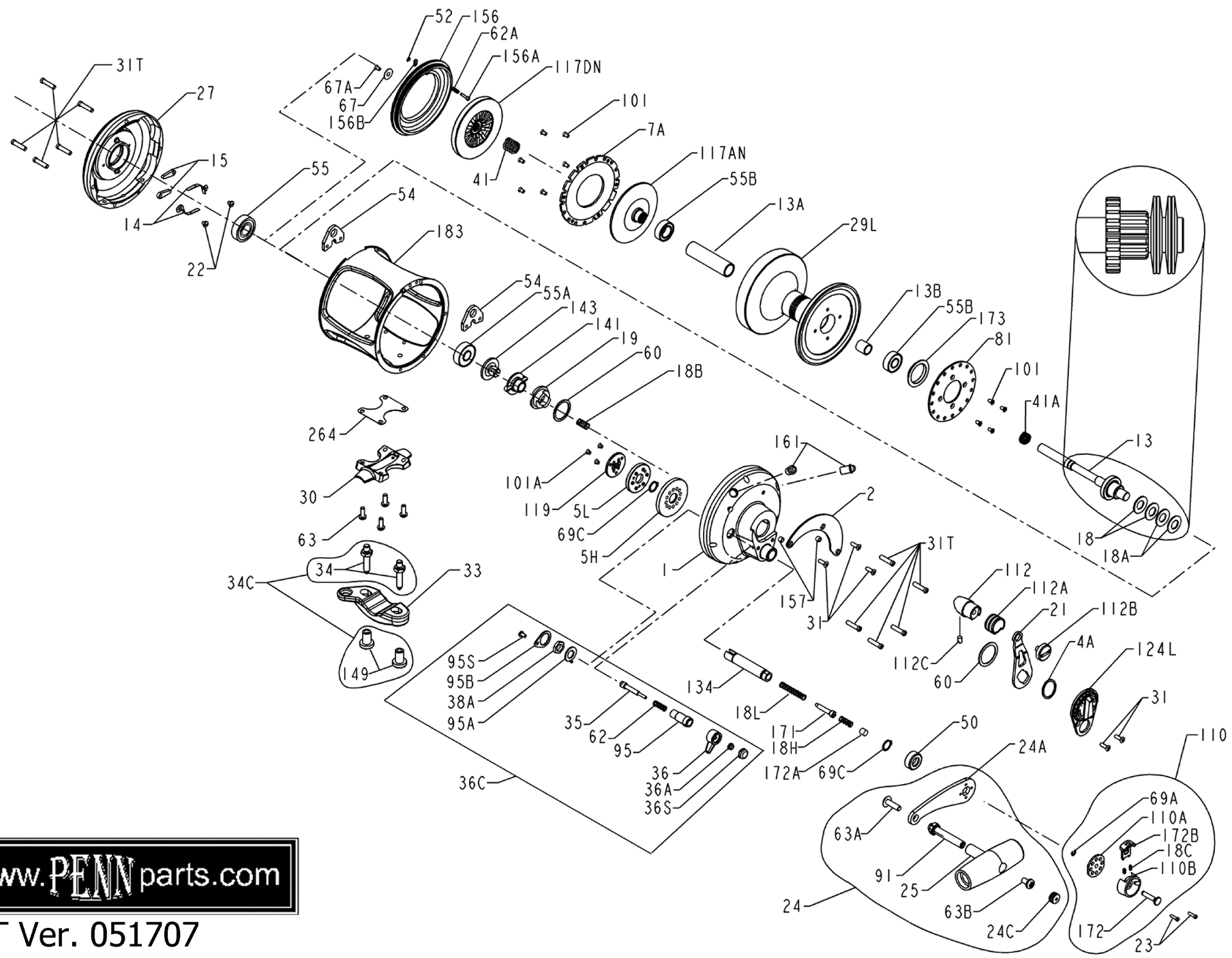




# PARTS LIST FOR MODEL 50VSW For Serial No's A060950 and BEFORE



www.PENNparts.com

SBT Ver. 051707

Penn Reel Parts list for Model: 50VSW For Serial No's A060950 and BEFORE

<b>KEY NO</b>	<b>PART NO.</b>	<b>DESCRIPTION</b>	<b>KEY NO</b>	<b>PART NO.</b>	<b>DESCRIPTION</b>
1	1-50VS	RIGHT SIDE PLATE ASSEMBLY	34C	34C-70	ROD CLAMP SCREW W/NUT
2	2-50VS	QUADRANT RING	35	35-70	CLICK TONGUE
4A	4-12LT	TEFLON THRUST WASHER	36	36N-50	CLICK BUTTON
5H	5-50VS-HS	MAIN GEAR HIGH-SPEED	36C	36C-50VSW	CLICKER ASSEMBLY
5L	5-50VS-LS	MAIN GEAR LOW-SPEED	36A	36-700	CLICK BUTTON NUT
7A	7A-50VS	METAL DRAG WASHER	36S	36S-80ST	CLICK BUTTON CAP
13	13-50VSW	PINION GEAR	41	41-50	BEARING SPRING
13A	13B-50VSW	SPOOL SLEEVE	41A	41-70	DRAG SPRING
13B	13B-70	PINION GEAR SLEEVE	50	50N-30S	SHIELD
14	14-50	DOG SPRING (2 REQ.)	52	52-910	RETAINING RING
15	15-50	DOG (2 REQ.)	54	54-50T	HARNES LUG (2 REQ.)
18	18-50TW	DISC CLUTCH SPRING (2 REQ.)	55	55-80	BALL BEARING
18A	18-50W	DISC CLUTCH SPRING (2 REQ.)	55A	55-50	BALL BEARING
18B	18-349	SPRING	55B	55-80ST	BALL BEARING (2 REQ.)
18C	18C-15KG	SHIFT BUTTON SPRING (2 REQ.)	60	60-50	THRUST WASHER (old #4-70)
18H	18H-15KG	SHIFT SPRING (HEAVY)	62	62-50	CLICK SPRING
18L	18L-15KG	SHIFT SPRING (LIGHT)	62A	62-545	CLICK SPRING
19	19-50VS	ECCENTRIC CAM	63	63-30T	STAND SCREWS (4 REQ.)
21	21-50VS	ECCENTRIC LEVER	63A	63A-50	SCREW
22	22-109	DOG SPRING SCREW	63B	63-50	SCREW
23	23-15KG	HANDLE SCREW (2 REQ.)	67	67-70	PINION GEAR WASHER
24	24N-30S	HANDLE COMPLETE	67A	67A-70	RETAINING SCREW
24A	24N-30S-1	HANDLE BLANK ONLY (NO KNOB)	69A	69B-30S	RETAINING RING
24C	24C-50	HANDLE KNOB CAP	69C	195-40	RETAINING RING (2 REQ.)
25	25-50	HANDLE KNOB	81	81-50	RATCHET
27	27-50VS	L.S. PLATE ASSEMBLY	91	91N-50	HANDLE RIVET
29L	29L-50VSW	SPOOL	95	95-70	CLICK TONGUE BUSHING
30	30-50T	STAND	95A	95A-50	CLICK BUSHING WASHER
31	31T-70	SHORT SCREW (5 REQ.)	95B	95B-70	RETAING PLATE
31T	31T-80	SIDE PLATE SCREW (10 REQ.)	95S	46A-704	RETAINING PLATE SCREW
33	33-70	ROD CLAMP	101	101-30	RATCHET PLATE SCREW (11 REQ.)
34	34-70	CLAMP SCREW (2 REQ.)	101A	101-50S	COUPLING PLATE SCREW (3 REQ.)

<b>KEY NO</b>	<b>PART NO.</b>	<b>DESCRIPTION</b>	<b>KEY NO</b>	<b>PART NO.</b>	<b>DESCRIPTION</b>
110	110-15KG	SHIFTER ASSEMBLY	149	149-70	ROD CLAMP NUT (2 REQ.)
110A	110A-15KG	HANDLE LOCKING PLATE	*154	154-50	SHIM SPOOL SHAFT
110B	110B-15KG	SHIFT HOUSING	156	156-50VS	DRAG COVER
110C	110A-15KGSP	HANDLE LOCKING ASSEMBLY	156A	156A-30VS	LOCK PIN
112	112-70	ECCENTRIC LEVER KNOB	156B	156B-30VS	LOCK PLATE
112A	112A-70	KNOB SLEEVE	157	157S-12LT	QUADRANT SPACING BUSHING (2 REQ.)
112B	112B-70	ECCENTRIC KNOB SCREW	161	161C-50	LOCATING PIN ASSEMBLY (2 REQ.)
112C	112C-70	ECCENTRIC KNOB PLUG	162	162-50	LOCATING PIN SPRING (2 REQ.)
117A	117AN-70	RETAINING PLATE W/DRAG WASHER	171	171-15KG	SHIFT PLUNGER
117D	117DN-70	DRIVE PLATE W/ DRAG WASHER	172	172-15KG	SHIFT BUTTON (LOW)
119	119-15KG	COUPLING PLATE	172A	172A-50VS	SPRING SPACER
124L	124L-50VS	BRIDGE COVER ASSEMBLY	172B	172B-15KG	SHIFT BUTTON (HIGH)
134	134-50VS	GEAR STUD	173	173-50VS	SPOOL BUSHING
141	141-50VS	CAM FOLLOWER	183	183-50VSW	TUBE FRAME
143	143-50VS	PRESET SCREW	264	264-30T	STAND GASKET

\*NOT SHOWN

NOTE: Many of www.pennparts.com schematics include changes that were either made by Penn, or errors found and corrected by our parts dept.  
SBT Ver. 051707 (based on Penn's Rev. #19 - 2-27-07)

NOTE: Earliest versions (UP to Rev.#13) of this reel contained:  
128-50S Low Gear Pins (6 Req.)

## VERY IMPORTANT PLEASE READ!!!!!!

Penn used serial numbers to distinguish the two versions but we have since found out that their numbers were not accurate.  
So use the method below to identify your reel.

### TAKE A LOOK AT YOUR HANDLE:

This is the most simple way to tell which version you have. The shaft that the handle sits on is a different diameter on the two versions.  
So - Take off the handle and look at the hole on the handle blade. Measure the inside diameter of the hole using the flat edges.

**NEWER Version: Inside width of hole is 7/16" slightly larger**

**OLDER Version: Inside width of hole is 3/8"**