

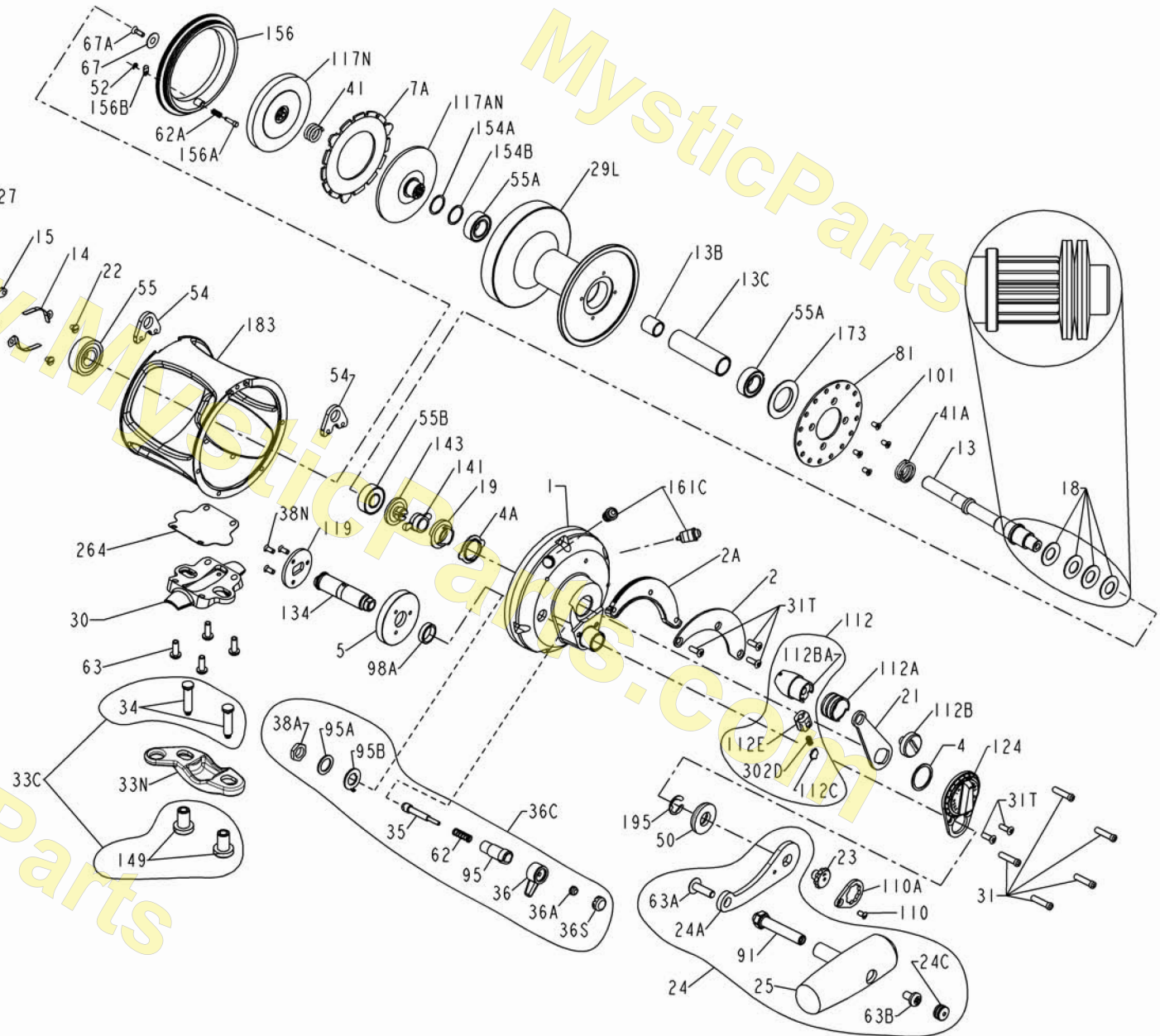


**PARTS LIST FOR MODEL 30VW
REEL NO. 1151044**



mysticparts.com
**MYSTIC
REEL PARTS**
965 Radio Road
Little Egg Harbor, NJ 08087
+1 (609) 296-1300
www.mysticparts.com
customerservice@mysticparts.com

**MRP Ver 062022
(based on Penn's Rev 4 2-12-12)**



Penn Reel Parts list for Model: 30VW (After Design Changes) GOLD

KEY NO	PENN PART PART #	PUREFISHING PART #	DESCRIPTION	KEY NO	PENN PART PART #	PUREFISHING PART #	DESCRIPTION
1	1-30VS	1180415	RIGHT SIDE PLATE ASSEMBLY {GOLD}	62	62-50	1184022	CLICK SPRING
2	2-30VS	1180592	QUADRANT RING	62A	62-545	1184029	CLICK SPRING
2A	2A-30VS	1180655	QUADRANT SPACER	63	63-30T	1184045	STAND SCREWS (4 REQUIRED)
4	4-12LT	1180748	CAM THRUST WASHER	63A	63A-50	1184056	SCREW
4A	4-30VS	1180752	CAM BUSHING	63B	63-50	1184046	SCREW
5	5-30VW	1190952	MAIN GEAR	67	67-70	1184106	PINION GEAR WASHER
7A	7A-30VS	1181032	METAL DRAG WASHER	67A	67A-70	1184111	PLATE SCREW
13	13-30VW	1191099	PINION GEAR	81	81-50	1184204	RATCHET
13B	13B-70	1181371	PINION GEAR SLEEVE	91	See design changes below		
13C	13B-30VSW	1181367	SPOOL SLEEVE	95	95-70	1184307	CLICK TONGUE BUSHING
14	14-16S	1181388	DOG SPRING (2 REQUIRED)	95B	95A-20	1184310	SERRATED CLICK WASHER
15	15-50	1181425	DOG (2 REQUIRED)	95C	95A-50	1184311	CLICK BUSHING WASHER
18	18-30	1181610	DISC CLUTCH SPRING (4 REQUIRED)	98A	98A-30VW	1192706	GEAR STUD SPACER
19	19-30VS	1181643	ECCENTRIC CAM	101	101-30	1184403	RATCHET PLATE SCREW (4 REQUIRED)
21	21-30VS	1181828	ECCENTRIC LEVER	110	110-50	1184436	SCREW
22	22-109	1181912	DOG SPRING SCREW (2 REQUIRED)	110A	110A-50	1184441	LOCKING PLATE
23	23-114	1181945	HANDLE SCREW (2 REQUIRED)	112	112-30VS	1184456	ECCENTRIC LEVER KNOB ASSEMBLY {GOLD}
24	24N-30TW	1181970	HANDLE COMPLETE	112A	112A-30VS	1184460	KNOB SLEEVE
24A	24-30TW-1	1191334	BLANK, METAL HANDLE PIECE ONLY	112B	112B-70	1184464	ECCENTRIC KNOB SCREW {GOLD}
24C	24C-50M	1191334	HANDLE KNOB CAP	112BA	112B-30VS	1192711	DRAG LEVER KNOB {GOLD}
25	25S-50M	1206099	HANDLE KNOB (OLD 25-50M)	112C	112C-30VS	1192712	DRAG CLICK PLATE
27	See design changes below			112E	112E-30VWS	1192713	CLICK PLATE HOUSING
29L	29L-30VSW	1182487	SPOOL	117A	117AN-50S	1184495	DRIVE PLATE W/ DRAG WASHER
30	See design changes below			117D	117N-50S	1184507	DRIVE PLATE W/ DRAG WASHER
31	31-80VS	1191564	SIDE PLATE SCREW (10 REQUIRED)	119	119-50	1192268	COUPLING PLATE
31T	31T-70	1182700	SHORT SCREW (5 REQUIRED)	124	124L-30VS	1184548	BRIDGE COVER ASSEMBLY
33	33N-70	1191619	ROD CLAMP	134	134-30VW	1192309	GEAR STUD
34	See design changes below			141	141-30VS	1184652	CAM FOLLOWER
34C	See design changes below			143	143-16VS	1184670	PRESET SCREW
35	35-70	1182902	CLICK TONGUE	149	149-70	1184703	ROD CLAMP NUT (2 REQUIRED)
36	36N-50	1183047	CLICK BUTTON	154	154-80	1184719	INNER DRAG PLATE SHIM
36A	36-700	1183014	CLICK BUTTON NUT	156	156-30VS	1184736	DRAG COVER
36C	36C-30VSW	1191712	CLICK BUTTON ASSEMBLY	156A	156A-30VS	1184752	LOCK PIN
36S	36S-80ST	1183051	CLICK BUTTON CAP	156B	156B-30VS	1184756	LOCK PLATE
38A	38-710	1183157	CLICK BUSHING NUT	161C	161C-30VSW	1192369	LOCATING PIN BUSHING (2 REQUIRED)
38N	38N-7	1183171	SCREW (3 REQUIRED)	173B	173-50VS	1184838	BEARING RETAINER
41	41-2.5FR	1183332	BEARING SPRING	183	See design changes below		
41A	41-70	1183328	DRAG SPRING	195	195-40	1184955	RETAINING RING (2 REQUIRED)
50	50-30VW	1191965	SHIELD	264	See design changes below		
52	52-910	1183840	RETAINING RING	302D	302D-525MAG	1185255	MAGNET SPRING (2 REQUIRED)
54	54-30T	1183852	HARNES LUG (2 REQUIRED)				
55	55-80	1183878	BALL BEARING				
55A	55-80ST	1183879	BALL BEARING (2 REQUIRED)				
55B	20-704	1181790	BALL BEARING				

MYSTIC REEL PARTS REVISION!

NOTE: Many of www.mysticparts.com schematics include changes that were either made by Penn, or errors found and corrected by our parts dept.
MRP Ver 062022 (based on Penn's Rev 6 4-17-15)

DESIGN CHANGES AND CORRECTIONS

THIS IS NEWER: Stand / Gasket / Frame / Studs / all changed!

KEY NO	PENN PART PART #	PUREFISHING PART #	DESCRIPTION
30	30-30VS	1191551	STAND (older version is NOT available)
264	264-30VS	1192542	STAND GASKET (older version is NOT available)

You CAN convert if change all 4

THESE 2 PART NUMBERS WERE REDESIGNED in their Rev 00 thru 6 schematics
PENN DID NOT ASSIGN THE NEW PARTS NEW 7 DIGIT #S !! So be careful

THE ORIGINAL PARTS ARE NOT AVAILABLE.

IF THE PARTS IN THE DRAWING DO NOT MATCH YOUR REEL, SEE THE 30VW_before.pdf SCHEMATIC OF the OLDER VERSION

THIS IS IMPORTANT AS THE STUD SCREWS ARE ALSO OF A DIFFERENT DESIGN

NEWER style studs that drop in from inside the frame and slide to the side in the newer stand

183	183N-30VW	1192738	TUBE FRAME {GOLD} (studs drop thru frame bottom thru stand)
33C	33C-70VS	1182770	ROD CLAMP KIT CLAMP/STUDS/NUTS/WRENCH (NEWER VERSION)
34	34-70VS	1182792	CLAMP SCREW, DROP DOWN style with pan head (2 REQUIRED)
34C	34C-70VS	1191646	ROD CLAMP SCREW W/NUT (Drop down style stud)

OTHER Changes:

KEY NO	PENN PART PART #	PUREFISHING PART #	DESCRIPTION
27	27-30VW	1191376	L.S. PLATE ASSEMBLY {GOLD} (Rev 4)
	27-30VS	1182159	L.S. PLATE ASSEMBLY {GOLD} (Rev 6)
No problems noted, Penn made the sub, apparently interchangeable?			
91	91N-50	1184304	HANDLE RIVET (ALUM? AND BRASS)
	91S-50	1206011	HANDLE RIVET (STAINLESS STEEL) (Rev 6)

Materials changed