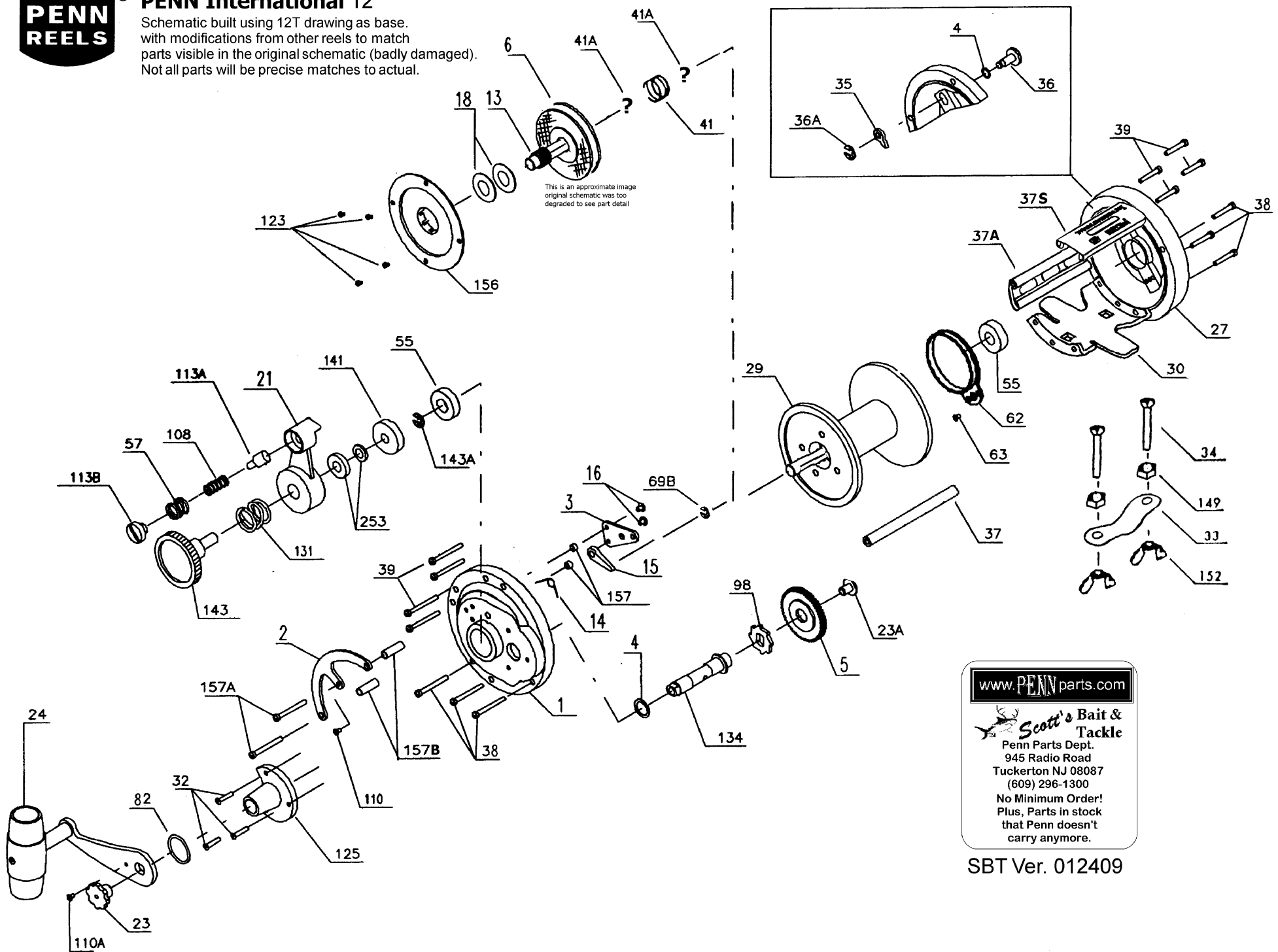


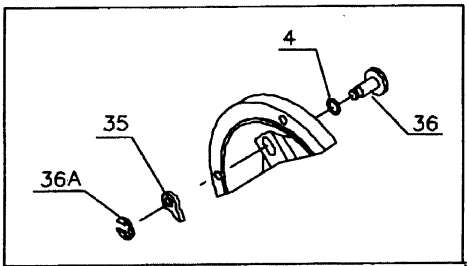


# PENN International 12

Schematic built using 12T drawing as base. with modifications from other reels to match parts visible in the original schematic (badly damaged). Not all parts will be precise matches to actual.



This is an approximate image original schematic was too degraded to see part detail



[www.PENNparts.com](http://www.PENNparts.com)

**Scott's Bait & Tackle**  
 Penn Parts Dept.  
 945 Radio Road  
 Tuckerton NJ 08087  
 (609) 296-1300

No Minimum Order!  
 Plus, Parts in stock  
 that Penn doesn't  
 carry anymore.

SBT Ver. 012409

# Penn Reel Parts list for Model: 12 International

KEY	PART	DESCRIPTION	KEY	PART	DESCRIPTION
NO	NO.		NO	NO.	
1	1-6	RIGHT SIDE PLATE ASSEMBLY	38	38-8	STAND SCREWS (6 REQUIRED)
2	2-6	QUADRANT	39	39-6	SPACER BAR SCREWS (8 REQUIRED)
3	3-6	RATCHET DOG BRIDGE	41	41-6	BEARING SPRING
4	4-12	GEAR STUD WASHER	41A	41A-6	SPRING GUIDE (? IMAGE NOT READABLE ON ORIG.SCHEM)
4A	4-12H	CLICK BUTTON WASHERS (2 REQUIRED) (Old# 4-6)	55	55-6	BALL BEARING (2 REQUIRED)
5	5-6	MAIN GEAR	57	57-109	SPRING (2 REQUIRED)
6	6-6	DRAW WASHER BRAKE LN.	62	62-309	CLICK SPRING
13	13-12	PINION GEAR ASSEMBLY	63	63-209	CLICK SPRING SCREW
14	14-6	DOG SPRING	69B	69B-50	CLICK BUTTON RETAINING RING
15	15-6	DOG	82	82-6	HANDLE SHIM
16	16-9	BRIDGE SCREWS (2 REQUIRED) (Old# 16-6)	98	98-6	GEAR RATCHET
18	18-6	DISC CLUTCH SPRINGS (4 REQUIRED)	108	108-140	DRAW LEVER BUTTON SPRING
21	21-6	ECCENTRIC LEVER	110	110-50	CENTER QUADRANT SCREW (Old # 32-6)
23	23-60	HANDLE SCREW	110A	110-60	HANDLE LOCK SCREW (Old# 23A-60)
23A	23-6CH	GEAR SCREW (Old# 23-6)	113A	113A-6	DRAW LEVER BUTTON
24	24-6	HANDLE COMPLETE (24-12LT MAY BE COMPATIBLE)	113B	113B-6	DRAW LEVER SCREW
27	27-6	LEFT SIDE PLATE ASSEMBLY	123	123-6	DRAW COVER SCREWS (4 REQUIRED) (123-50 MAY BE COMPATIBLE)
29	29M-12	SPOOL	125	125-6	GEAR STUD HOUSING
30	30-111	STAND	131	131-6	PRESENT KNOB SPRING
32	32-14CH	GEAR STUD HOUSING SCREWS (3 REQUIRED) (Old# 32-14)	134	134-6	GEAR STUD (134-12H MAY BE COMPATIBLE)
33	33-200	ROD CLAMP	141	141-6	CAM FOLLOWER
**	33R-200	RINGED ROD CLAMP (OPTIONAL)	143	143-6	PRESENT KNOB
34	34-200	ROD CLAMP SCREWS (2 REQUIRED)	143A	143A-6	PRESENT KNOB
35	35-155	CLICK TONGUE	149	149-200	ROD CLAMP HEX NUT (2 REQUIRED)
36	36-6	CLICK BUTTON (36-12H MAY BE COMPATIBLE)	152	152-200	WING NUT (2 REQUIRED)
37	37-12	FRAME POST	156	156-12	DRAW COVER (156-12H MAY BE COMPATIBLE)
37A	37A-12	SPACER BAR INTERNATIONAL 12	157	157-12	BRIDGE SPACER BUSHINGS (2 REQUIRED)
37S	37S-12	STAMPED SPACER BAR INTERNATIONAL 12	157A	157A-12	QUADRANT SCREWS (2 REQUIRED)
			157B	157-6	QUADRANT SPACER BUSHINGS (2 REQUIRED)
			253	253-12	THRUST BEARING

**\*\* NOT ON SCHEMATIC - OPTIONAL ITEM**

**NOTE:** Many of [www.pennparts.com](http://www.pennparts.com) schematics include changes that were either made by Penn, or errors found and corrected by our parts dept.  
SBT Ver. 012409

**NOTE:** Where there are parts noted that "may be compatible" - we do not have an old reel to use parts for reference to compare them to modern parts, HOWEVER There are many similarities between parts in the 12T and parts in the older 6, 12, 12W reels, so some of the 12T parts may be subbale. Compatibility not confirmed at this time.