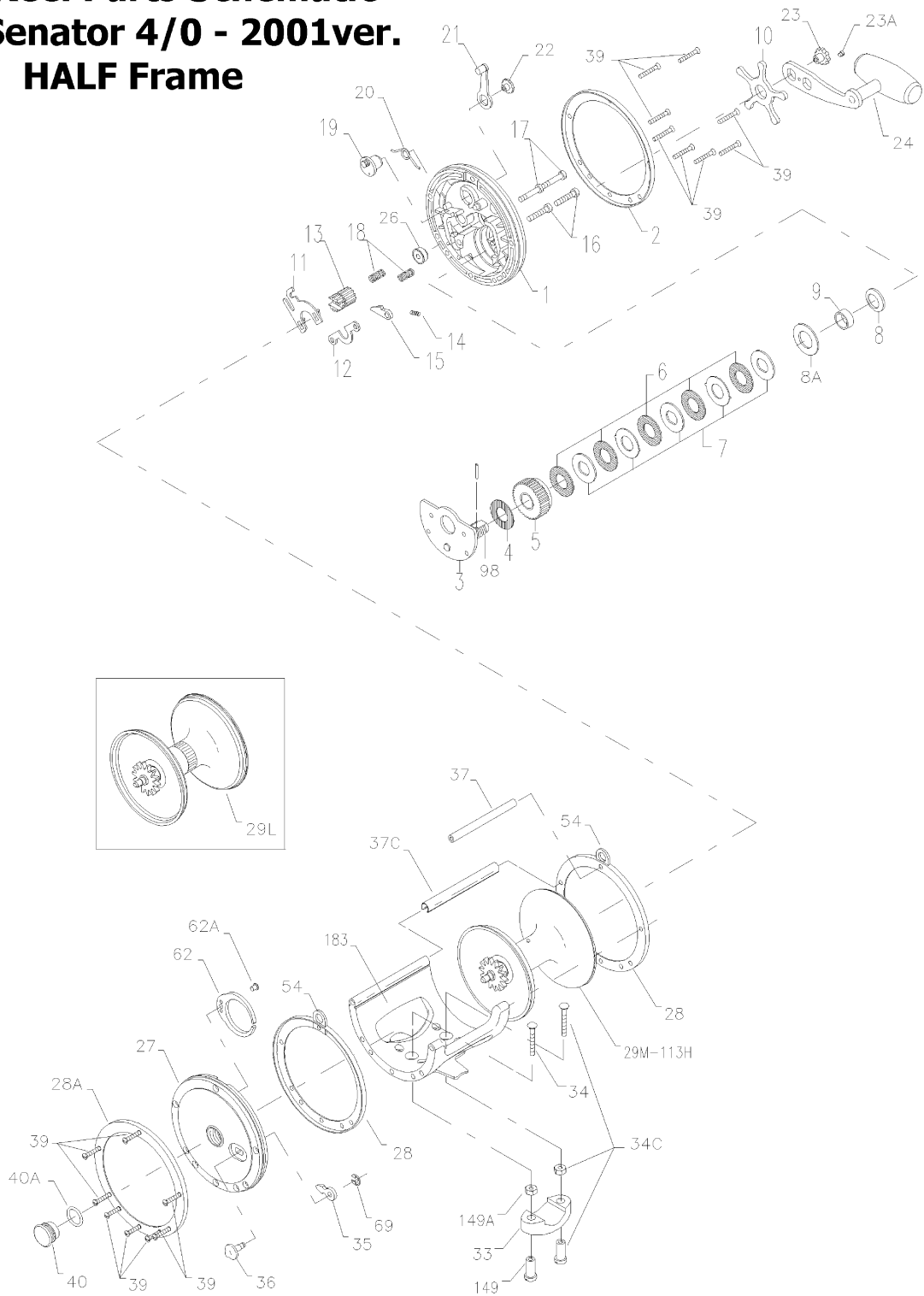


# Penn Reel Parts Schematic

## 113HL Senator 4/0 - 2001ver.

### HALF Frame



## Penn Reel Parts list for Model: 113HL Half Frame Version

KEY PART			KEY PART		
NO	NO.	DESCRIPTION	NO	NO.	DESCRIPTION
1	1-113H	HANDLE SIDE PLATE	26	26-113H	HANDLE SIDE BEARING
2	2-113H-O	OUTER RING SIDE RING	27	27N-113H	NON-HANDLE SIDE PLATE
3	3-113H	BRIDGE W/ SLEEVE	28	2-113-I	INNER SIDE RING
4	4-349	FIBER WASHER	28A	2-113-O	OUTER NON-HANDLE SIDE RING
5	5-113H	MAIN GEAR	29L	29L-113HL	SPOOL
6	6-113H	DRAG WASHER (5 REQ.)	33	33-113	ROD CLAMP
7	7C-113H	METAL WASHER SET	*	33R-200	RINGED ROD CLAMP (OPTIONAL)
8	8-349	TENSION SPRING	34	34-45	CLAMP SCREW (ONLY)
8A	18-970	TENSION SPRING DRAG	34C	34C-45	ROD CLAMP SCREW W/ NUTS
9	9-113H	SPACING SLEEVE	35	35-60	CLICK TONGUE
10	10-349	STAR DRAG WHEEL	36	36-113	CLICK BUTTON
11	11-113	ECCENTRIC JACK	37	37-113	FRAME POST
12	12-60	PINION YOKE	37C	37C-113H	FRAME SHEILD
13	13-113H	PINION	38 + 39	39-9	POST SCREW, BOTH SIDES
14	14-99	DOG SPRING	40	**40-113HL	NON-HANDLE SIDE BEARING
15	15-113H	DOG	40A	120-113H	NON-HANDLE SIDE BEARING O-R
16	16-113H	LOWER BRIDGE SCREW	54	54-113	HARNES LUG
17	17-113H	UPPER BRIDGE SCREW	62	62-309	CLICK SPRING
18	18-60	CLUTCH SPRING	62A	63-209	CLICK SPRING SCREW
19	19-113	ECCENTRIC	69	69B-600	RETAINING RING
20	20-155	ECCENTRIC SPRING	98	98-320	GEAR SLEEVE
21	21-66	ECCENTRIC LEVER	149	149-45	CLAMP NUT
22	22-99	ECCENTRIC SCREW	149A	149-200	HEX NUT
23	23-114	HANDLE SCREW	183	183-113HSP	FRAME W/ STAND
23A	110-60	HANDLE LOCK SCREW			
24	24-349H	HANDLE			

\*\* Owners of Older 113HL reel must order 40-113H

*\*Not Shown*

NOTE: Many of [www.pennparts.com](http://www.pennparts.com) schematics include changes that were either made by Penn, or errors found and corrected by our parts dept.

SBT Ver. 101012 Based on Penns Rev1