



# PENN<sup>®</sup>

## INTERNATIONAL FLY REEL



1.5, 1.5G - 2.5, 2.5G - 4, 4G

### INSTRUCTION AND PARTS MANUAL

**Penn Limited Warranty.** Penn Fishing Tackle Mfg. Co. warrants its Products to be free from defects in materials and workmanship for a period of one year from the date of purchase. This warranty does not cover damage or malfunctions caused by accident, abuse or normal expected wear. If your Penn Product has a defect within the terms of the warranty, you should return it to us at one of the Penn Warranty Centers indicated below. All shipping and insurance costs and transportation arrangements will be borne by you and are your responsibility. We will repair or replace the Product, at our option, without further cost to you, (including free return transportation and insurance), if, however, the repair is not covered by the provisions of this warranty, your Penn Product will be repaired and returned to you at a reasonable charge for labor, parts and return transportation and insurance.

ALL WARRANTIES WHICH MAY BE IMPLIED BY OPERATION OF LAW, INCLUDING BUT NOT LIMITED TO WARRANTIES OF MERCHANTABILITY AND WARRANTIES OF FITNESS FOR ANY PARTICULAR PURPOSE, SHALL BE LIMITED TO ONE YEAR FROM THE DATE OF PURCHASE. IN NO EVENT SHALL PENN FISHING TACKLE MFG. CO. BE LIABLE FOR INCIDENTAL OR CONSEQUENTIAL DAMAGES FOR BREACH OF THIS WARRANTY OR ANY OTHER WARRANTY WHICH MAY BE IMPLIED BY LAW. SOME STATES DO NOT ALLOW LIMITATIONS ON HOW LONG AN IMPLIED WARRANTY LASTS, AND SOME STATES DO NOT ALLOW THE EXCLUSION OF INCIDENTAL OR CONSEQUENTIAL DAMAGES, SO THE ABOVE LIMITATION AND/OR EXCLUSION MAY NOT APPLY TO YOU. THIS WARRANTY GIVES YOU SPECIFIC LEGAL RIGHTS, AND YOU MAY ALSO HAVE OTHER RIGHTS WHICH VARY FROM STATE TO STATE.

#### PENN WARRANTY CENTERS

**Penn Fishing Tackle Mfg. Co.**  
Factory Service Department  
3028 West Hunting Park Avenue  
Philadelphia, PA 19132-1121  
(215) 229-9415

**Penn Fishing Tackle Mfg. Co.**  
California Warehouse  
354 West Alondra Boulevard  
Gardena, CA 90248-2423  
(310) 327-2531

**Dave's Parts & Service**  
8531 Port Richey Village Loop  
Port Richey, FL 34668  
(813) 847-6125

**Metropolitan Rod & Reel**  
1915-F S. Campbell  
Springfield, MO 65807  
9417) 887-0211

**John's Sporting Goods**  
1913 Broadway  
Everett, WA 98201  
(206) 259-3056

**A. Alkman Sporting Goods**  
3010 Novar Road  
Mississauga, Ontario  
Canada L5B 1S4  
(416) 277-3595

**Success Tackle Co.**  
1555 Shawnigan Mill Bay Road  
Shawnigan Lake, British Columbia  
Canada V0R 2W0  
(604) 743-3782

*Penn Fishing Tackle Mfg. Co. reserves the right to discontinue models and make changes in design specifications without notice. Penn's policy of ongoing research may necessitate design changes for Product performance improvement.*

Made in the U.S.A.

PENN FISHING TACKLE MFG. CO.

Penn Fishing Tackle Mfg. Co., 3028 West Hunting Park Avenue,  
Philadelphia, PA 19132, U.S.A.

Telephone: (215) 229-9415 FAX: (215) 223-3017

MADE IN U.S.A.



## INTRODUCTION

Congratulations on the purchase of your Penn International<sup>®</sup> fly reel. The name International<sup>®</sup> assures you of the highest quality materials and workmanship in salt water fishing reels. Like Penn's series of International<sup>®</sup> offshore lever drag reels, the Penn International<sup>®</sup> salt water fly reels are made in the U.S.A. They are engineered and built by demanding craftsmen, with obsessive attention to detail. Penn International<sup>®</sup> fly reels are at the top of the class!

Pair your new International<sup>®</sup> fly reel with a matching Gold Medal fly rod for a potent flyfishing combination. Penn's Gold Medal rod blanks feature 96 percent "IM 6" graphite, blended with Epoxy X43, Penn's exclusive resin. The result is another Penn exclusive, "IMS," a premium-grade graphite that pushes fly rod technology to new limits. Penn's rod building team has been designing and manufacturing fly rods for over 35 years, so their experience, technical know-how and love of the flyfishing sport is your assurance that a Penn Gold Medal is the best fly rod that money can buy.

Please take some time to read over this manual and become familiar with all of the features of your International<sup>®</sup> fly reel. Keep this manual in a safe place for future reference and part numbers, should you need them. Good fly fishing!

## QUALITY FEATURES

**-Machined, bar stock aluminum frame and spool.** Penn International<sup>®</sup> fly reels feature the strength and integrity of one piece, tubular frames, machined from the highest grade marine aluminum. Spools are also machined from the same grade of bar stock aluminum, then precision aligned with the frames. Both frames and spools are anodized to a lustrous black or gold sheen, depending on model, for the utmost in good looks and corrosion resistance.

Spare spools increase a fly reel's versatility, allowing the fly-fisherman to match different angling conditions. Each spare spool in the International<sup>®</sup> fly reel series is just like the original part, and it's easy to change spools (see instructions). So why not order some spare spools. Check with your local fly tackle dealer, or contact Penn for more information.

## -HT100 Drag System.

This is no ordinary salt water fly reel! Instead of cork or other traditional fly reel drag materials, Penn International<sup>®</sup> fly reels contain HT100 drag material, first proven as the material of choice for braking supersonic jet aircraft. Then it was proven on the offshore blue waters as the drag material for Penn's International<sup>®</sup> lever drag reels. This space-age material is unaffected by contaminants, such as water and salt, and it seems to last forever. Your drag stays smooth, maintains any setting you desire, and sheds all kinds of heat. Along with its matching stainless steel drag washer, the oversize HT100 drag washer in each Penn International<sup>®</sup> fly reel is your assurance of flawless drag performance, no matter what fish you pursue.

**-Marine-Grade Components.** Each Penn International<sup>®</sup> fly reel is designed and manufactured for use in the harsh, corrosive salt water environment. From a machined stainless steel spindle, to three stainless steel ball bearings, these reels exude quality throughout. Special, big game design features, like bronze double dogs (to hold fast against bone-jarring strikes) will prevent any damage to internal components. Penn engineers even incorporated a special stabilizing bar in the machined anodized aluminum reel stand to provide a rock-solid connection of stand to frame.

## OPERATING FEATURES

• **Treated Handle.** Just the right size for the work at hand. Small enough so it won't catch your fly line or leader, yet large enough for comfortable reeling and retrieving line. Penn-manufactured to hold up to salt spray, blazing sun or other outdoor elements.

Penn International<sup>®</sup> fly reels are **single action, direct drive** reels, for the utmost in angler control. Each complete turn of the handle means one complete turn of the spool (1-to-1) ratio. Each time you strip line out or a fish pulls line against the drag, the handle will turn backward.

### WARNING!

**KEEP FINGERS, KNUCKLES, THUMBS AND OTHER PARTS OF YOUR HANDS AWAY FROM THE HANDLE KNOB WHEN NOT ACTUALLY REELING. A SUDDEN STRIKE AND RUN FROM A LARGE FISH WILL CAUSE THE HANDLE TO TURN BACKWARD IN A RUNAWAY FASHION. NEVER TRY TO GRAB OR STOP THE HANDLE FROM TURNING BACKWARD WHEN A FISH IS MAKING ITS RUN. WAIT UNTIL THE FISH HAS STOPPED ITS RUN BEFORE GRASPING THE HANDLE TO RETRIEVE LINE. BE PREPARED TO LET GO OF THE HANDLE IN AN INSTANT SHOULD THE FISH SUDDENLY MAKE ANOTHER RUN.**

Penn International<sup>®</sup> fly reels are shipped from the factory in the right hand drive mode, but they are easily convertible to left hand drive (see instructions on converting to left hand drive). With the reel in right hand drive, and with the handle facing you, turn clockwise to retrieve line. The handle will turn backward (counter-clockwise) when stripping line or when a fish is running.

• **Drag Knob.** Low profile so it won't catch your line or clothing, wide diameter makes it easy to adjust. Located in the center of the left side plate (when the reel is right hand drive), turn clockwise to increase drag, counter-clockwise to decrease drag. Remember, that since Penn International<sup>®</sup> fly reels are direct drive, a heavier drag setting will make it more difficult to strip line out for casting. Many fly-fishermen instead prefer to keep their drag settings on the light side, which makes stripping easier. Should they need additional drag pressure, they can instantly add some by pressing their palm against the rim of the spool (handle side, opposite drag knob). The beauty of this **palming rim** feature is that, as quickly as you can add manual drag pressure, you can just as quickly take it off. Now that's control!

**WARNING! REMEMBER TO KEEP YOUR FINGERS, THUMB AND OTHER PARTS OF YOUR HAND AWAY FROM THE HANDLE WHEN USING THE PALMING RIM, AS THE HANDLE SPINS BACKWARD WHEN A FISH RUNS AND PULLS OUT LINE.**

For best results, cup the palm of your hand on the underside of the fly reel until it contacts the palming rim.

## Other key features on the Penn International<sup>®</sup> fly reel drag:

- the series of detents on the inside of the drag knob, which will keep the drag where you set it. The drag knob won't "ride" off its setting during traveling, casting or fish-fighting maneuvers.

- a stainless steel drag knob retaining screw, located in the center of the drag knob, which will prevent the drag knob itself from loosening and falling off during fishing. This feature allows the lightest possible drag settings without fear of losing the drag knob. The drag knob screw operates independently of the drag knob. To ensure that it's seated properly, increase the drag by turning the knob clockwise, until you can insert a small coin, medium screwdriver or similar gadget into the slot of the drag knob screw. Turn clockwise to tighten. Keep the drag knob screw tightened securely, but be sure not to overtighten and risk stripping the threads.

- a traditional **outgoing click** feature, which causes the reel to click when a fish runs against the drag (or when stripping line). The outgoing click is an assembly separate from the ratchet assembly, which you hear clicking when reeling in line. Turn the handle forward a few times, then backward a few times to familiarize yourself with the separate, distinct sounds of both click noises.

When fighting fish, many fly-fishermen use the sound of the outgoing click to help them monitor the fight (whether a fish is pulling against the drag, how hard or fast the fish is running, etc.). Plus, there's nothing like the sound of an outgoing click, running wild, to get the adrenaline flowing! Some anglers, however, prefer the non-outgoing click option, and if that's you, please refer to the instructions on removing the outgoing click. The outgoing click function is easy to disengage, if you so desire.

In between fishing trips, it's a wise practice to loosen up the drag knob all the way, until it stops against the drag knob screw. This will relieve any pressure on internal components, plus it will remind you to re-set and check the drag before each fishing trip.

## SPECIFICATIONS

MODEL	WEIGHT	LINE	CAPACITY	YDS/LB. BACKING	
				METERS/KG.	BACKING
4.4G	13 370	10-12		WF12-F, WF12-F,	350/30 320/15
2.5, 2.5G	10 280	8-10		WF9-F, WF9-F,	250/20 230/10
1.5, 1.5G	7 200	6-8		WF6-F, WF6-F,	150/20 135/10

### STANDARD MODELS IN BLACK ANODIZED FINISH.

"G" SUFFIX MEANS GOLD ANODIZED FINISH.

**NOTE: NEW, ULTRA-THIN BRAIDED LINES MAY INCREASE BACKING CAPACITIES. CHECK WITH YOUR FLY SHOP FOR MORE INFORMATION ON THE PERFORMANCE AND CAPACITIES OF THESE NEW LINES.**

## CARE AND LUBRICATION

Your Penn International<sup>®</sup> fly reel is quality manufactured for maximum durability in salt water, but like any precision instrument, reasonable care will ensure its best performance for a lifetime of fly fishing.

After each fishing trip, the reel should be cleaned. This is especially true after fishing in salt water. Wash or wipe down the reel in fresh water, preferably warm, to remove accumulated salt deposits.

When washing the reel, be careful not to use a driving force of water, since this will force the salt deposits into the reel's internal mechanisms. Rather, use a very fine spray to dissolve the salt on the external parts of the reel.

Dry excess moisture from the reel and then, sparingly, lubricate all exposed areas. Many anglers use a pressurized spray oil for quick, easy protection after washing or wiping down their fly reels. Try not to get any oil on your fly line or leader, but if you do, wipe the excess off immediately. Other anglers use an oil or silicone-impregnated cloth to apply a light protective coating to the reel's exposed metal parts.

Store your fly reel in its case and keep it in a cool, dry place. Do not store in a plastic bag, as condensation may develop inside the bag and on the reel. Remember to back the drag off to relieve any pressure on the drag's internal components.

## REMOVING & REPLACING SPOOL

To remove the spool, for internal lubrication of the reel or for insertion of a replacement spool, first tighten down the drag knob (key #10) enough to expose the slot of the drag knob's retaining screw (key #10A). With a small coin, screwdriver or other suitable instrument, turn the screw counter-clockwise enough to back it out. Turn the drag knob counter-clockwise and back it off from the reel entirely. Be careful not to drop and lose both parts.

Hold the reel handle side up, grab the palming rim (outside edge of the spool) and carefully pull up on the spool to remove. You may want to keep your index finger on the head of the spindle stud (key #71A) while removing the spool, just to keep the spindle stud parts intact.

Remove the spindle stud parts (key #'s 71A, 55, 55A, 41 and 20), taking note of their sequence and orientation on the spindle stud. Next, remove the stainless steel drag washer (key #7). You may need to use a small screwdriver, knife point or similar instrument to pry this washer from the spool. Grease between the washer and spool will have a vacuum effect, making the washer stick solidly to the spool.

The spool is now completely disassembled and the reel is now ready for internal lubrication or a replacement spool. In either case, remember to re-install the stainless steel drag washer (key #7) before re-installing the spool. Check that a sufficient amount of insulating grease is between the drag washer and spool (see internal lubrication); apply if necessary.

To replace the spool, carefully align the slot on the spindle stud with the spindle lock pin (key #102). You may need to work the spindle stud back and forth with your finger and/or turn the spool a few times (keeping the handle side up) to properly seat the spool and spindle stud parts.

A few threads on the threaded end of the spindle stud protruding from the opposite side plate area means your spool is seated and ready for the drag knob. Be sure to hold the spool and head of the spindle stud intact before turning the reel over and installing the drag knob. Tighten the drag knob enough to allow easy re-installation of the drag knob retaining screw. Remember, this screw operates independently from the drag knob, so tighten down this screw securely. (The purpose of this screw is to prevent the drag knob from loosening too much and possibly falling off.) Finally, adjust your drag knob accordingly.

## INTERNAL LUBRICATION

Completely dis-assemble your spool and spindle stud parts following the directions for removing the spool. Remove old grease using a commercial solvent, detergent or de-greaser, and lubricate frictional parts with a good quality, waterproof grease. Provide only a light coating of grease on frictional surfaces, and avoid the temptation to over lubricate. Better to lubricate sparingly and more often than to put off lubrication and think you make up for it by sloshing grease all over the reel's innards.

Penn's Muscle Grease is perfect for lubricating the International™ fly reels. Its proven formula remains consistent, neither running in hot weather, nor stiffening in cold. Penn's Muscle Grease won't cake up either, and is the original grease used in your International™ fly reel.

### Important lubrication points are:

- spindle stud parts (key #'s 71A, 55, 55A, 41, 20, 26A). Pay special attention to the outer and inner ball bearings, and the threads on the end of the spindle stud.
- the area between the stainless steel drag washer (key #7) and the spool. All that's needed is a light coating to form an insulating seal between these two parts. Also, smear a light coating on the inside surfaces of the arbor hole on the spool (key #29) itself.
- the outside and inside diameters of the spindle (key #71), as well as the flange bearing (key #26) and anti-reverse ratchet (key #98). It's easiest to first remove the anti-reverse ratchet and flange bearing, grease, and re-install them.

While you have those parts out, you may want to carefully remove the dog assemblies by backing out the dog screws (key #'s 22) counter-clockwise and removing the dogs (key #'s 15). Be very careful not to lose the dog screws, dog bushings (#15B) and dog coil springs (#14). Carefully note their respective positions for re-assembly. Lightly coat the dog screw threads, frictional undersides of the dogs and dog springs with grease, then re-install. Tighten dog screws securely, but do not over tighten. Do one dog assembly at a time to avoid any mix-ups.

For optimum performance of the HT100 drag washer in your Penn International™ fly reel, coat the drag washer (both sides) with Penn Muscle Grease, let stand for a few minutes, then wipe off the excess. This will fill in any surface convolutions in the drag washer material, increase its range and smoothness, and help keep out water, salt and other contaminants.

Use only a drop or two of light lubricant, such as Penn Lube, available in regular (product #24) and large size (product #224) tubes, for the frictional surface between the click housing (key #35A) and click pin (key #35B). After applying, push the click pin up and down to make sure the oil has entered the assembly.

Next, lubricate the frictional surfaces of the handle knob (key #25). Using light lubricant, put a few drops on the frictional surface between the handle knob and the handle post (key #91). Put the drops on the outside edge of the handle screw (key #91A) and turn the handle knob so the oil will penetrate. Apply a drop or two on the other end of the handle knob too, where it joins the handle post and spool.

Re-install the spool assembly into the frame, following instructions on replacing the spool, but be sure to apply some grease to the threads and underside of the drag knob, as well as on the threads of the drag knob retaining screw. Also smear a light coating of grease in and around the counterbored hole in the left side of the frame, where the drag knob contacts the frame.

## REMOVING OUTGOING CLICK

Follow instructions on removing the spool, and locate the click housing (key #35A) on the inside edge (ratchet side) of the frame. With a small screwdriver, carefully turn out (counter-clockwise) the click housing screws (key #22A) and carefully remove the entire assembly. Be sure not to lose the small click housing spring (key #107) on the underside of the click housing, and be sure to keep all components of the click housing in a safe place, should you decide to re-install the click at a later date (reverse procedure to re-install). After removing the outgoing click, follow instructions on replacing the spool.

## CONVERTING TO LEFT HAND DRIVE

Flip instructions on removing spool, then lift out only drag washer/ratchet (key #98). Make sure that the flange bearing (key #26) stays in place. Note the orientation of the ratchet teeth, because you will be turning over the ratchet to fit the dogs in left hand drive.

With a small screwdriver, carefully back off (counter-clockwise) one of the dog screws (key #22), remove and put aside. Convert one dog assembly at a time to make things easier. Note that the dog (key #15) shows an "R" for right-hand drive. Carefully lift the dog assembly off the frame (key #183), being extra careful to note how the dog spring (key #14) is positioned on the dog post and slot inside the frame. This slot is also marked "R" for right-hand drive.

Flip the dog over to reveal an "L" for left-hand drive, and attach the dog spring to the post on the underside of the dog. Be sure that the end coil on the dog spring is on the bottom of the post, flush with the underside of the dog. The other end of the dog spring should point **away** from the dog tooth (pointed end) of the dog, so that it will easily fit into the slot. Note that when you flip the dog, the dog spring will now fit into a new slot in the frame. This slot is marked "L" for left-hand drive.

## PENN SERVICE & PARTS PROCEDURES

**Penn Service.** Unlike many import companies, Penn prides itself in providing fast and excellent service at reasonable prices. This is possible because most Penn Products are made in the U.S.A. and Penn maintains a policy of designing models to maximize Product and part continuity. Penn does not change Products solely for the sake of change, but only when the change results in an improved Product.

Many Penn Products have been in service for 40 years or more. Our customers marvel at their ability to easily obtain replacement parts to keep those models in service.

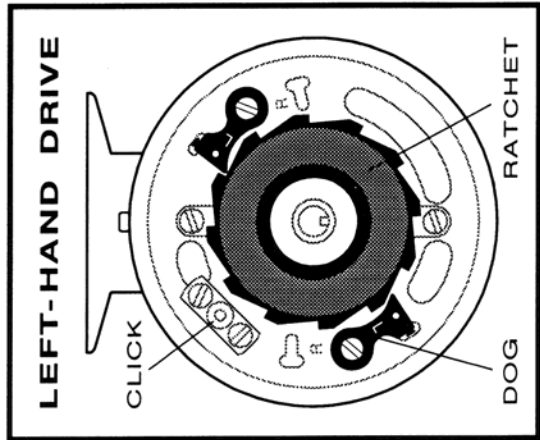
For the fastest repair service and spare parts, we suggest you contact your local Penn dealer. You may also return your Penn Product for factory service to our Philadelphia factory or California warehouse address. Send it insured and include a short note describing the service you want. To avoid errors, make sure that your name and return address appear neatly and clearly on both your outside package and your note. Allow sufficient and reasonable time for Penn to receive and service your Product. Avoid our spring rush by sending your Penn Products in for service and repair during our fall or early winter.

Penn will notify you that your Product has been serviced, providing a reasonable charge for parts, labor and return postage, or you can request VISA or MasterCard payment. Provide card type, name on card, card number, expiration date and daytime telephone number when paying by credit card.

Re-install the dog screw in the same hole, and tighten firmly, but be sure not to overtighten. To help you hold the dog screw on the screwdriver before re-installing, put a dab of grease on the screwdriver tip.

Repeat procedure for the other dog assembly. While you're at it, you may want to check and lubricate all necessary components, as outlined in the Internal Lubrication section.

Finally, flip the drag washer/ratchet over, so that its teeth match the teeth on both dogs. Press the drag washer/ratchet firmly down on to the flange bearing (key #26) to ensure proper seating, and turn the ratchet to make it ride over the dog teeth. Turn the ratchet the opposite way to make sure the dogs catch the ratchet, etc. Re-install the spool following the replacing spool instructions.



## HOW TO ORDER PENN REEL PARTS

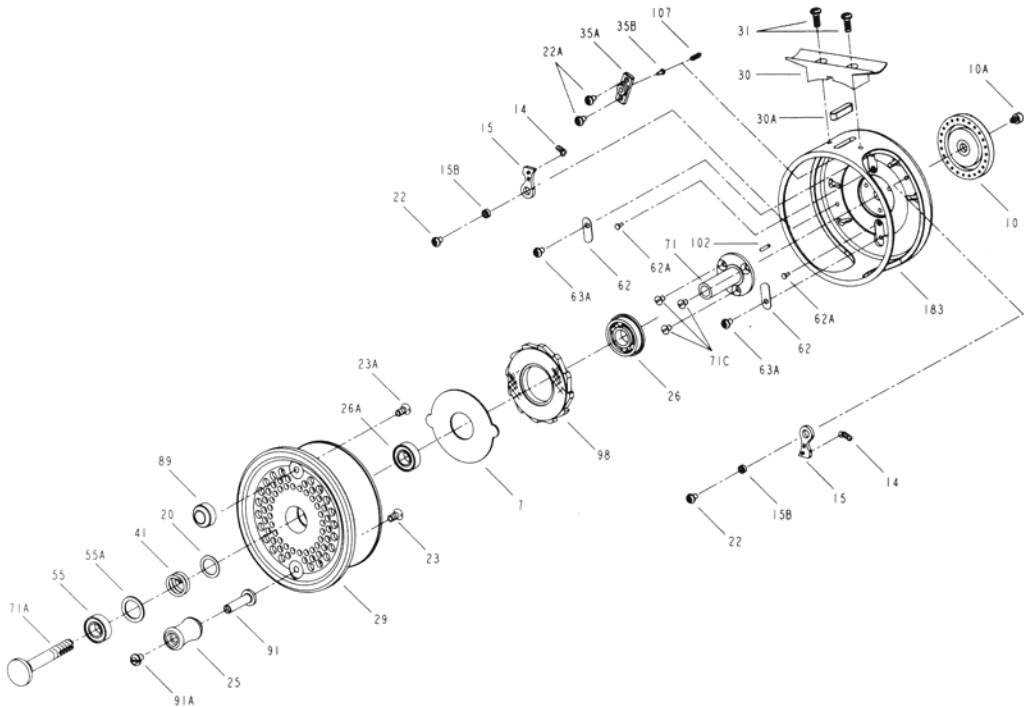
1. By mail, please list model for which you are buying parts and order parts by name and number.
2. Include your legible, printed name, address and daytime telephone number with your order.
3. Penn will then send you an invoice, showing part prices plus shipping and handling charges.
4. There is a minimum part order of \$2.00 and a shipping and handling charge of \$2.50 on a minimum order.
5. Upon receipt of your payment (check or money order only), your order will be shipped to you via parcel post or U.P.S.
6. For faster service, you may also use your MasterCard or VISA credit card to mail in parts orders. Provide name on card, account number and expiration date when ordering parts. Be sure to include information requested in Steps 1 & 2.
7. You may also use your MasterCard or VISA to place parts orders over the telephone. Call the Penn Parts Department at (215) 229-9415 between 9 am and 5 pm East Coast time.
8. For fastest service, see your local Penn dealer. Check telephone directory for dealer nearest you.

www.PENNparts.com

**Scott's Bait & Tackle**

Penn Parts Dept.  
945 Radio Road  
Tuckerton NJ 08087  
(609) 296-1300

No Minimum Order!  
Plus, Parts in stock  
that Penn doesn't  
carry anymore.



## PARTS LIST FOR MODEL 4 and 4G Fly Reel

KEY NO.	DESCRIPTION	PART NO.	KEY NO.	DESCRIPTION	PART NO.
7	Metal Drag Washer	7-4FR	35A	Click Housing	35A-2.5FR
10	Drag Knob	10-2.5FR	35B	Click Spring	35B-2.5FR
10A	Retaining Screw	10A-2.5FR	41	Drag Coil Spring	41-4FR
14	Dog Coil Spring (2)	14-500	55	Ball Bearing (Outer)	55-320
15	Dog (2)	15-4FR	55A	Bearing Washer	55A-2.5FR
15B	Dog Bushing (2)	15B-2.5FR	62	Detent Spring	62-2.5FR
20	Spool Thrust Washer	20-4FR	62A	Detent Pin	62A-2.5FR
22	Dog Screw (2)	22-2.5FR	63A	Detent Spring Screw (2)	63A-2.5FR
22A	Click Housing Screw(2)	22-2.5FR	71	Spindle	71-4FR
23	Handle Post Screw	23-2.5FR	71A	Spindle Stud	71A-4FR
23A	Counter Balance Screw	23A-2.5FR	71C	Spindle Screw (3)	71C-2.5FR
25	Handle Knob	25-4FR	89	Counter Balance	89-4FR
26	Flange Bearing	26-2.5FR	91	Handle Post	91-4FR
26A	Ball Bearing (Inner)	26A-2.5FR	91A	Handle Screw	91A-2.5FR
29	Spool	29L-4FR	98	Drag Washer/Ratchet	98-4FR
30	Stand	30-4FR	102	Spindle Lock Pin	102-2.5FR
30A	Stabilizer Bar	30A-2.5FR	107	Coil Spring	107-60
31	Stand Screw (2)	31-2.5FR	183	Frame	183-4FR

NOTES: •To owners of Penn GOLD International® Fly Reels, be sure to order parts with "G" suffix.

•To order parts for BLACK International® Fly Reels, omit "G" suffix from part number.

•Exploded view shows parts oriented for right hand drive.

•Numbers appearing in parenthesis after descriptions in the parts lists indicate the number of parts needed for that particular sub-assembly. It does not mean you will automatically receive that number of parts. Order the amount of parts you need.

## PARTS LIST FOR MODEL 2.5 and 2.5G Fly Reel

KEY NO.	DESCRIPTION	PART NO.		KEY NO.	DESCRIPTION	PART NO.
7	Metal Drag Washer	7-2.5FR		35A	Click Housing	35A-2.5FR
10	Drag Knob	10-2.5FR	G	35B	Click Pin	35B-2.5FR
10A	Retaining Screw	10A-2.5FR		41	Drag Coil Spring	41-2.5FR
14	Dog Coil Spring (2)	14-500		55	Ball Bearing (Outer)	55-320
15	Dog (2)	15-2.5FR		55A	Bearing Washer	55A-2.5FR
15B	Dog Bushing (2)	15B-2.5FR		62	Detent Spring	62-2.5FR
20	Spool Thrust Washer	20-2.5FR		62A	Detent Pin	62A-2.5FR
22	Dog Screw (2)	22-2.5FR		63A	Detent Spring Screw (2)	63A-2.5FR
22A	Click Housing Screw (2)	22-2.5FR		71	Spindle	71-2.5FR
23	Handle Post Screw	23-2.5FR		71A	Spindle Stud	71A-2.5FR
23A	Counter Balance Screw	23A-2.5FR		71C	Spindle Screw (3)	71C-2.5FR
25	Handle Knob	25-2.5FR		89	Counter Balance	89-2.5FR
26	Flange Bearing	26-2.5FR		91	Handle Post	91-2.5FR
26A	Ball Bearing (Inner)	26A-2.5FR		91A	Handle Screw	91A-2.5FR
29	Spool	29L-2.5FR	G	98	Drag Washer/Ratchet	98-2.5FR
30	Stand	30-2.5FR	G	102	Spindle Lock Pin	102-2.5FR
30A	Stabilizer Bar	30A-2.5FR		107	Coil Spring	107-60
31	Stand Screw (2)	31-2.5FR		183	Frame	183-2.5FR

NOTES: •To owners of Penn GOLD International® Fly Reels, be sure to order parts with "G" suffix.

•To order parts for BLACK International® Fly Reels, omit "G" suffix from part number.

•Exploded view shows parts oriented for right hand drive.

•Numbers appearing in parenthesis after descriptions in the parts lists indicate the number of parts needed for that particular sub-assembly. It does not mean you will automatically receive that number of parts. Order the amount of parts you need.

## PARTS LIST FOR MODEL 1.5 and 1.5G Fly Reel

KEY NO.	DESCRIPTION	PART NO.		KEY NO.	DESCRIPTION	PART NO.
7	Metal Drag Washer	7-1.5FR		35A	Click Housing	35A-2.5FR
10	Drag Knob	10-2.5FR	G	35B	Click Pin	35B-2.5FR
10A	Retaining Screw	10A-2.5FR		41	Drag Coil Spring	41-2.5FR
14	Dog Coil Spring (2)	14-500		55	Ball Bearing (Outer)	55-320
15	Dog (2)	15-2.5FR		55A	Bearing Washer	55A-2.5FR
15B	Dog Bushing (2)	15B-2.5FR		62	Detent Spring (2)	62-2.5FR
20	Spool Thrust Washer	20-2.5FR		62A	Detent Pin (2)	62A-2.5FR
22	Dog Screw (2)	22-2.5FR		63A	Detent Spring Screw (2)	63A-2.5FR
22A	Click Housing Screw (2)	22-2.5FR		71	Spindle	71-1.5FR
23	Handle Post Screw	23-2.5FR		71A	Spindle Stud	71A-1.5FR
23A	Counter Balance Screw	23A-2.5FR		71C	Spindle Screw (3)	71C-2.5FR
25	Handle Knob	25-2.5FR		89	Counter Balance	89-2.5FR
26	Flange Bearing	26-2.5FR		91	Handle Post	91-2.5FR
26A	Ball Bearing (Inner)	26A-2.5FR		91A	Handle Screw	91A-2.5FR
29	Spool	29L-1.5FR	G	98	Drag Washer/Ratchet	98-1.5FR
30	Stand	30-1.5FR	G	102	Spindle Lock Pin	102-2.5FR
30A	Stabilizer Bar	30A-2.5FR		107	Coil Spring	107-60
31	Stand Screw (2)	31-2.5FR		183	Frame	183-1.5FR

NOTES: •To owners of Penn GOLD International® Fly Reels, be sure to order parts with "G" suffix.

•To order parts for BLACK International® Fly Reels, omit "G" suffix from part number.

•Exploded view shows parts oriented for right hand drive.

•Numbers appearing in parenthesis after descriptions in the parts lists indicate the number of parts needed for that particular sub-assembly. It does not mean you will automatically receive that number of parts. Order the amount of parts you need.