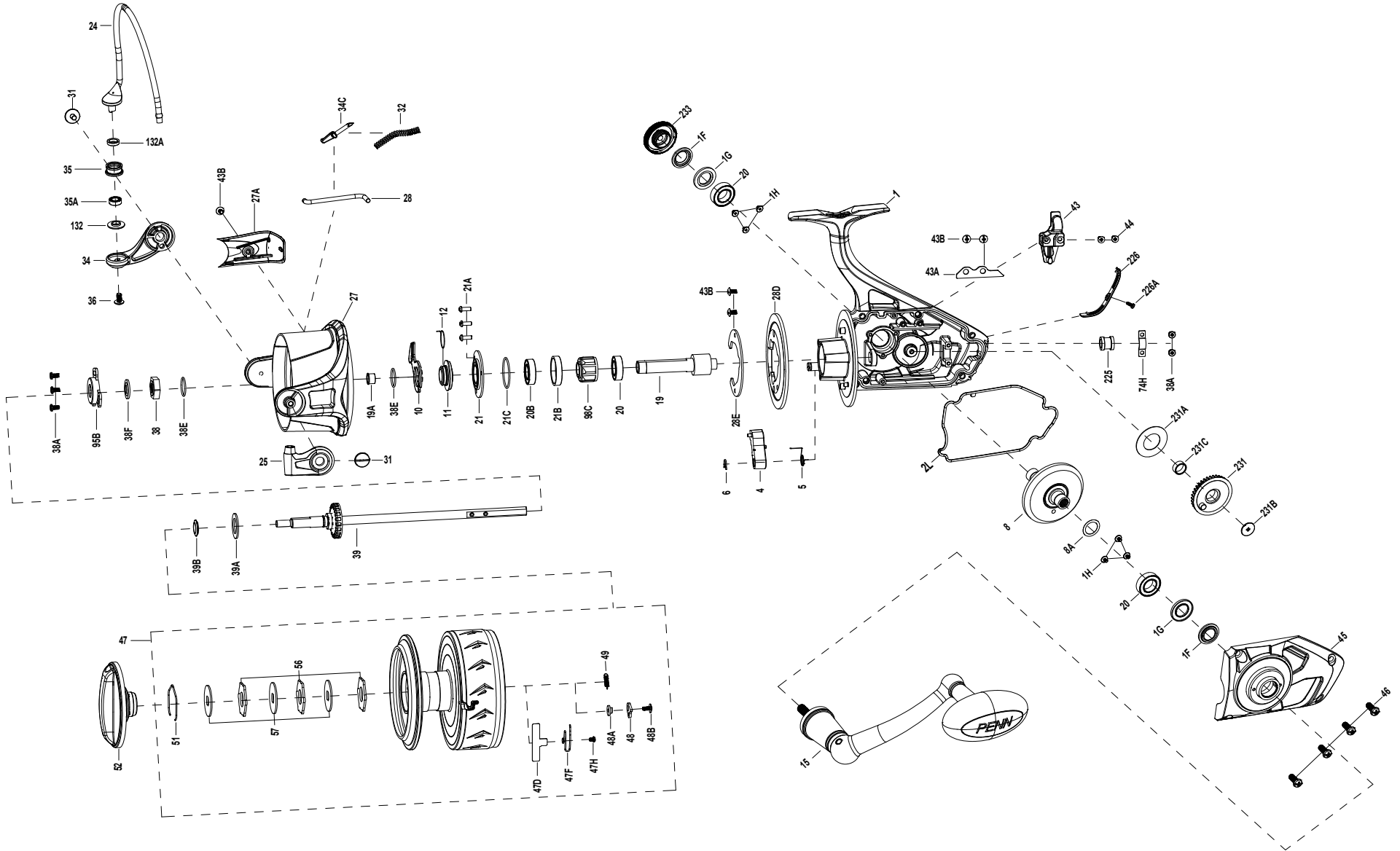




SSVII9500 EXPLODED DRAWING





Thank you for your recent PENN gear purchase. No matter where you fish or what you fish for, you can depend PENN to perform in any battle day in and day out. Now it's time to get your product registered and get out on the water.

<https://register.pennfishing.com>

KEY NO.	PART NO.	PENN STYLE NO.	DESCRIPTION
1	1612363	1-SSVII9500	Housing Assembly
1F	1489289	1F-SSVI7500	Main Gear Seal Ring(2 req)
1G	1489288	1G-SSVI7500	Seal Plate(2 req)
1H	1489176	1H-SSVI3500	Bearing Screw (6 req)
2L	1489376	2L-SSVI9500	Housing Seal Ring
4	1489377	4-SSVI9500	A/R Dog
5	1489378	5-SSVI9500	Dog Spring
6	1489379	6-SSVI9500	Retaining Clip
8	1529562	8-BTLIII10000	Main Gear
8A	1216652	8A-7000FRC	Shim
10	1489381	10-SSVI9500	A/R Holder
11	1489382	11-SSVI9500	Bushing
12	1489296	12-SSVI7500	Bushing Spring
15	1489383	15-SSVI9500	Handle Assembly
19	1489384	19-SSVI9500	Pinion Gear
19A	1489385	19A-SSVI9500	Pinion Bushing
20	1489300	20-SSVI7500	Ball Bearing (3 req)
20B	1192621	20B-7000SG	Ball Bearing
21	1489386	21-SSVI9500	Bearing Retainer
21A	1192645	21A-5000SG	Screw (3 req)
21B	1489387	21B-SSVI9500	Collar
21C	1489388	21C-SSVI9500	Bearing Retainer 0-Ring
24	1489347	24-SSVI9500	Bail Wire
25	1489348	25-SSVI9500	Bail Holder
27	1489349	27-SSVI9500	Rotor

KEY NO.	PART NO.	PENN STYLE NO.	DESCRIPTION
27A	1489350	27A-SSVI9500	Bail Pivot Cover
28	1489351	28-SSVI9500	Trip Lever
28D	1489352	28D-SSVI9500	Rotor Brake
28E	1489353	28E-SSVI9500	Brake Plate
31	1489310	31-SSVI7500	Bail Arm Screw (2 req)
32	1489354	32-SSVI9500	Bail Spring
34	1489312	34-SSVI7500	Bail Arm
34C	1489355	34C-SSVI9500	Pivot Arm
35	1489356	35-SSVI9500	Line Roller
35A	1242222	35A-5000BTL	Line Roller Bearing
36	1191566	31-2000SG	Bail Stud Screw
38	1489315	38-SSVI7500	Rotor Nut
38A	1489316	38A-SSVI7500	Holder Plate Screw(5 req)
38E	1489317	38E-SSVI7500	Rotor 0-Ring(2 req)
38F	1489357	38F-SSVI9500	Main Shaft Seal Ring
39	1489358	39-SSVI9500	Main Shaft Assembly
39A	1489320	39A-SSVI7500	Thrust Washer
39B	1489321	39B-SSVI7500	Spool Seal Ring
43	1489359	43-SSVI9500	Crosswind Block
43A	1489360	43A-SSVI9500	Crosswind Block Plate
43B	1489213	43B-SSVI3500	Plate Screw (5 req)
44	1489361	44-SSVI9500	Screw (2req)
45	1489362	45-SSVI9500	Housing Cover Assembly
46	1489363	46-SSVI9500	Screw (4 req)
47	1612364	47-SSVII9500	Spool Assembly

KEY NO.	PART NO.	PENN STYLE NO.	DESCRIPTION
47D	1612339	47D-SSVII2500	Line Clip
47F	1612365	47F-SSVII9500	Line Clip Spring
47H	1529492	47H-BTLIII5000	Line Clip Spring Screw
48	1211625	48-5000SG	Click Tongue
48A	1211626	48A-5000SG	Click Tongue Washer
48B	1489327	48B-SSVI7500	Spool Click Screw
49	1211627	49-5000SG	Click Tongue Spring
51	1489328	51-SSVI7500	Drag Retaining Ring
52	1489365	52-SSVI9500	Drag Knob Assembly
56	1308114	56-CFT5000	Drag Washer (3 req)
57	1489330	57-SSVI7500	Keyed Washer (3 req)
74H	1489366	74H-SSVI9500	Bushing Plate
95B	1489331	95B-SSVI7500	Rotor Locking Plate
98C	1489332	98C-SSVI7500	Clutch/Sleeve Assembly
132	1489367	132-SSVI9500	Roller Washer
132A	1489334	132A-SSVI7500	Line Roller Bushing
225	1489368	225-SSVI9500	Shaft Bushing
226	1489369	226-SSVI9500	Rear Cover
226A	1489227	226A-SSVI3500	Rear Cover Screw
231	1489370	231-SSVI9500	Crosswind Gear
231A	1489371	231A-SSVI9500	Crosswind Gear Washer
231B	1489372	231B-SSVI9500	Crosswind Gear Screw
231C	1489373	231C-SSVI9500	Crosswind Gear Sleeve
233	1489374	233-SSVI9500	Bearing Cover Assembly