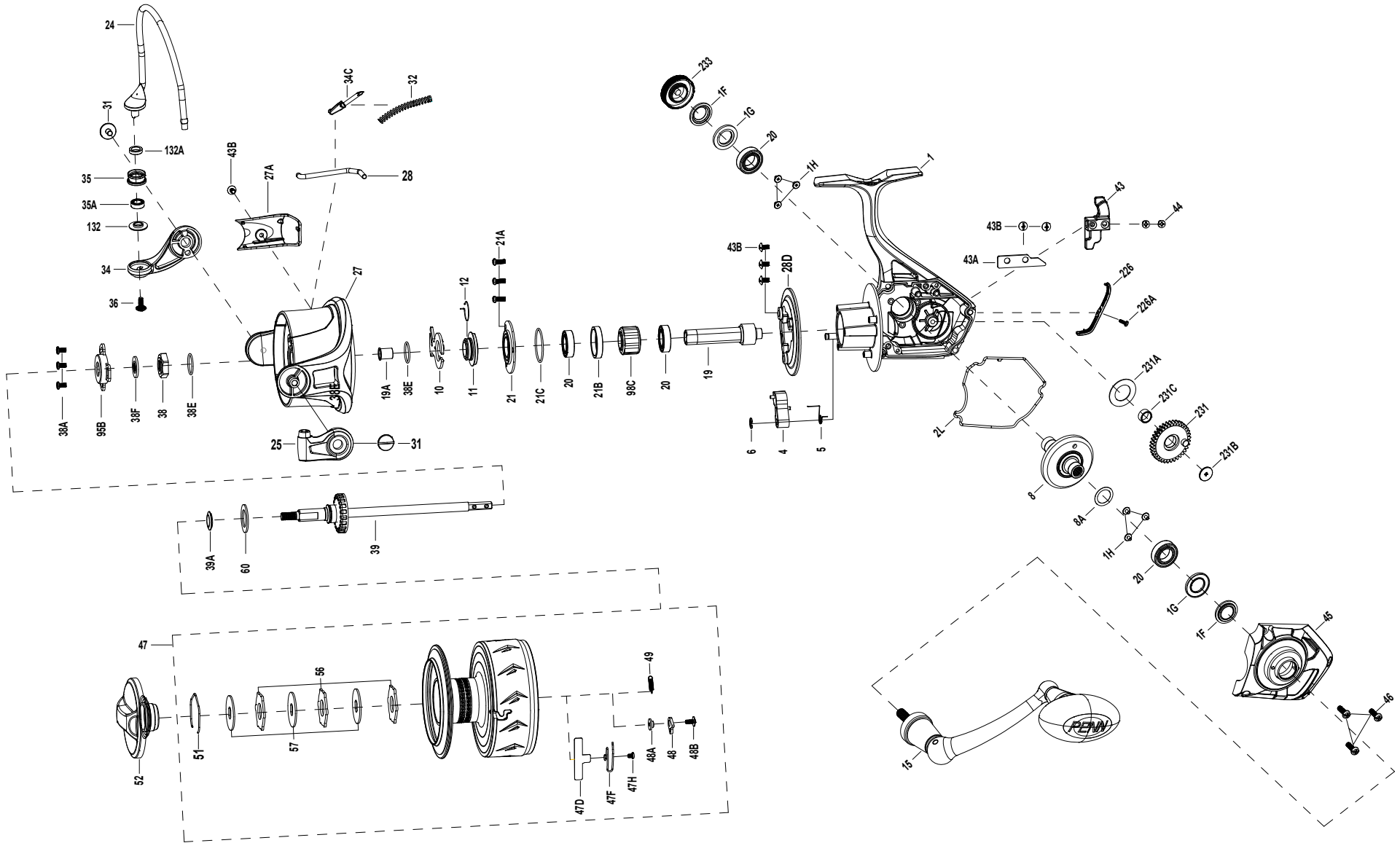




# SSVII7500 EXPLODED DRAWING





Thank you for your recent PENN gear purchase. No matter where you fish or what you fish for, you can depend PENN to perform in any battle day in and day out. Now it's time to get your product registered and get out on the water.

<https://register.pennfishing.com>

KEY NO.	PART NO.	PENN STYLE NO.	DESCRIPTION	KEY NO.	PART NO.	PENN STYLE NO.	DESCRIPTION	KEY NO.	PART NO.	PENN STYLE NO.	DESCRIPTION
1	1612359	1-SSVII7500	Housing Assembly	27A	1489307	27A-SSVI7500	Bail Pivot Cover	47D	1612339	47D-SSVII2500	Line Clip
1F	1489289	1F-SSVI7500	Main Gear Seal Ring(2 req)	28	1489308	28-SSVI7500	Trip Lever	47F	1612356	47F-SSVII6500	Line Clip Spring
1G	1489288	1G-SSVI7500	Seal Plate(2 req)	28D	1489309	28D-SSVI7500	Rotor Brake	47H	1529492	47H-BTLIII5000	Line Clip Spring Screw
1H	1489176	1H-SSVI3500	Bearing Screw (6 req)	31	1489310	31-SSVI7500	Bail Arm Screw (2 req)	48	1211625	48-5000SG	Click Tongue
2L	1489290	2L-SSVI7500	Housing Seal Ring	32	1489311	32-SSVI7500	Bail Spring	48A	1489326	48A-SSVI7500	Click Tongue Washer
4	1489291	4-SSVI7500	A/R Pawl	34	1489312	34-SSVI7500	Bail Arm	48B	1489327	48B-SSVI7500	Spool Click Screw
5	1489292	5-SSVI7500	Pawl Spring	34C	1489313	34C-SSVI7500	Pivot Arm	49	1211627	49-5000SG	Click Tongue Spring
6	1190979	6-5000SG	Retaining Clip	35	1489314	35-SSVI7500	Line Roller	51	1489328	51-SSVI7500	Drag Retaining Ring
8	1489293	8-SSVI7500	Main Gear	35A	1242222	35A-5000BTL	Line Roller Bearing	52	1489329	52-SSVI7500	Drag Knob Assembly
8A	1216652	8A-7000FRC	Shim	36	1191699	36-3000SG	Bail Stud Screw	56	1308114	56-CFT5000	Drag Washer (3 req)
10	1489294	10-SSVI7500	A/R Holder	38	1489315	38-SSVI7500	Rotor Nut	57	1489330	57-SSVI7500	Keyed Washer (3 req)
11	1489295	11-SSVI7500	Bushing	38A	1489316	38A-SSVI7500	Rotor Nut Screw(3 req)	60	1489320	39A-SSVI7500	Thrust Washer
12	1489296	12-SSVI7500	Bushing Spring	38E	1489317	38E-SSVI7500	Rotor O-Ring(2 req)	95B	1489331	95B-SSVI7500	Rotor Locking Plate
15	1489297	15-SSVI7500	Handle Assembly	38F	1489318	38F-SSVI7500	Main Shaft Seal Ring	98C	1489332	98C-SSVI7500	Clutch/Sleeve Assembly
19	1489298	19-SSVI7500	Pinion Gear	39	1489319	39-SSVI7500	Main Shaft Assembly	132	1489333	132-SSVI7500	Roller Washer
19A	1489299	19A-SSVI7500	Pinion Bushing	39A	1489321	39B-SSVI7500	Spool Seal	132A	1489334	132A-SSVI7500	Line Roller Bushing
20	1489300	20-SSVI7500	Ball Bearing (4 req)	43	1489322	43-SSVI7500	Crosswind Block	226	1489335	226-SSVI7500	Rear Cover
21	1489301	21-SSVI7500	Bearing Retainer	43A	1489323	43A-SSVI7500	Crosswind Block Plate	226A	1489227	226A-SSVI3500	Rear Cover Screw
21A	1192645	21A-5000SG	Screw (3 req)	43B	1489213	43B-SSVI3500	Plate Screw (6 req)	231	1489336	231-SSVI7500	Crosswind Gear
21B	1489302	21B-SSVI7500	Collar	44	1191845	44-5000SG	Screw (2 req)	231A	1489337	231A-SSVI7500	Crosswind Gear Washer
21C	1489303	21C-SSVI7500	Bearing Retainer O-Ring	45	1489324	45-SSVI7500	Housing Cover Assembly	231B	1489338	231B-SSVI7500	Crosswind Gear Screw
24	1489304	24-SSVI7500	Bail Wire	46	1191903	46-5000SG	Screw (4 req)	231C	1489339	231C-SSVI7500	Crosswind Gear Sleeve
25	1489305	25-SSVI7500	Bail Holder	47	1612360	47-SSVII7500	Spool Assembly	233	1489340	233-SSVI7500	Bearing Cover Assembly
27	1489306	27-SSVI7500	Rotor								