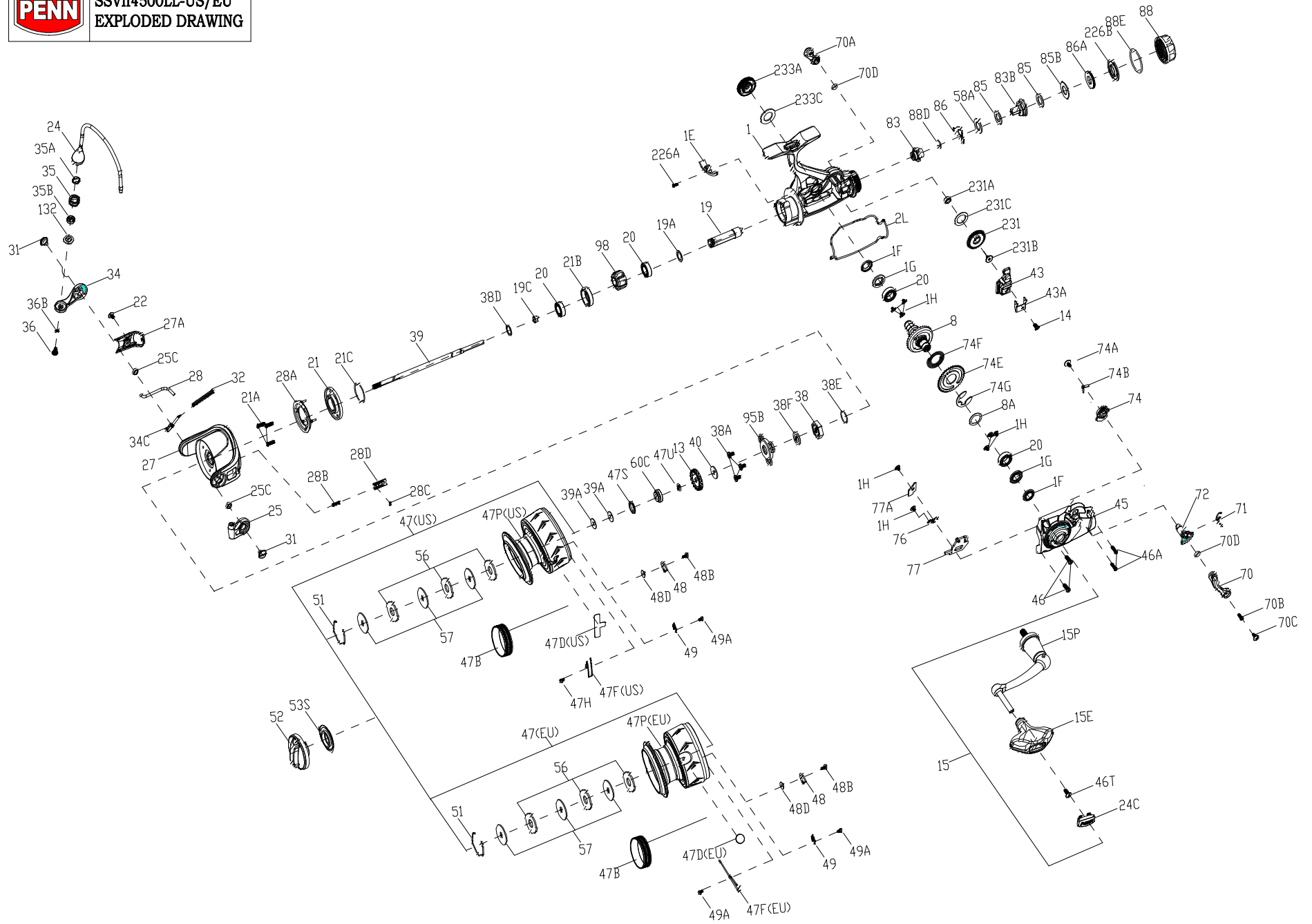




SSVII4500LL-US/EU
EXPLODED DRAWING





**SSVII4500LL-US/EU
EXPLODED DRAWING**

KEY NO.	PART NO.	PENN STYLE NO.	DESCRIPTION	KEY NO.	PART NO.	PENN STYLE NO.	DESCRIPTION
1	1611019	1-SSVII4500LL	Body Assembly	47	1612631	47-SSVII4500LL-EU	Spool Assembly
1E	1418954	1E-SLA3500	Body Slope	47B	1277076	47B-SSV4500	Spool Band
1F	1418955	1F-SLA3500	Body Ball Bearing Seal	47D	1611026	47D-SSVII16500LL-US	Line Clip
1G	1418956	1G-SLA3500	Body Side Seal Lock Plate	47D	1276953	47D-SSV3500-EU	Line Clip
1H	1418957	1H-SLA3500	Body Side Screw	47F	1612322	47F-SSVII14500LL-US	Line Clip Retainer
2L	1494730	2L-SSVI4500LL	Body Seal	47F	1385637	47F-CLA2000-EU	Line Clip Retainer
8	1611008	8-SSVII2500LL	Drive Gear	47P	1611021	47P-SSVII4500LL-US	Spool
8A	1418973	8A-SLA3500	Drive Gear Shim Washer	47P	1612632	47P-SSVII14500LL-EU	Spool
13	1418974	13-SLA3500	Click Gear	47S	1494699	47S-SSVI2500LL	Seal
14	1276992	14-SSV6500LL	Oscillation Slider Retainer Screw	47U	1494700	47U-SSVI2500LL	Seal
15	1494678	15-SSVI2500LL	Handle Assembly	48	1385578	48-CLA3000	Spool Click Plate
15E	1494679	15E-SSVI2500LL	Handle Knob	48B	1385581	48B-CLA3000	Spool Clicker Spring Screw
15P	1494680	15P-SSVI2500LL	Sub-Handle Assembly	48D	1385579	48D-CLA3000	Spool Clicker Spacer Ring
19	1494731	19-SSVI4500LL	Pinion Gear	49	1259579	49-7000AF	Spring
19A	1277424	19A-SSV3500	Pinion Gear Washer	49A	1294638	49A-CLA2000	Screw (2req.)
19C	1418978	19C-SLA3500	Pinion Gear Bushing	51	1277085	51-SSV5500	Drag Washer Retainer
20	1385530	20-CLA3000	Sealed Ball Bearing (4req.)	52	1494701	52-SSVI2500LL	Drag Knob Assembly
21	1418979	21-SLA3500	Pinion Bearing Retainer	53S	1447888	53S-CFTII3000	Drag Knob Seal
21A	1418980	21A-SLA3500	Retainer Screw(3req.)	56	1494702	56-SSVI2500LL	Drag Friction Washer (3req.)
21B	1385535	21B-CLA3000	Ball Bearing Bushing	57	1494703	57-SSVI2500LL	Keyed Drag Washer (3req.)
21C	1418981	21A-SLA3500	Body Head Seal	58A	1494704	58A-SSVI2500LL	Eared Washer
22	1092845	22-CLA2000	Rotor Cover Screw	60C	1494705	60C-SSVI2500LL	Spool Support Sleeve
24	1494732	24-SSVI4500LL	Bail Assembly	70	1494706	70-SSVI2500LL	Lever Left
24C	1494685	24C-SSVI2500LL	Handle Knob Cap	70A	1494707	70A-SSVI2500LL	Lever Right
25	1385539	25-CLA3000	Bail Holder	70B	1277002	70B-SSV4500LL	Drag Switch Lever Screw
25C	1385540	25C-CLA3000	Bail Holder Bushing(2req.)	70C	1277003	70C-SSV4500LL	R-Drag Switch Lever Screw
27	1494733	27-SSVI4500LL	Rotor	70D	1494708	70D-SSVI2500LL	0-Ring (2req.)
27A	1494734	27A-SSVI4500LL	Rotor Cover	71	1494709	71-SSVI2500LL	Spring
28	1494735	28-SSVI4500LL	Rotor Trip Lever	72	1494710	72-SSVI2500LL	Live Liner Drag Switch Cam
28A	1418967	28A-SLA3500	Rotor brake	74	1494741	74-SSVI4500LL	Cam Gear
28B	1385546	28B-CLA3000	Compressing Spring	74A	1496533	74A-SLA7500	Screw
28C	1385547	28C-CLA3000	O Ring	74B	1494712	74B-SSVI2500LL	Cam Gear Spring
28D	1385545	28D-CLA3000	Damper Holder	74E	1494713	74E-SSVI2500LL	Live Liner Gear
31	1385619	31-CLA2000	Bail Arm Screw(2req.)	74F	1494714	74F-SSVI2500LL	Live Liner Gear Spring
32	1385549	32-CLA3000	Bail Spring	74G	1277014	74G-SSV4500LL	Three Pawl Lever E-clip
34	1385550	34-CLA3000	Bail Arm	76	1277134	76-SSV4500LL	Live Liver Claw Spring
34C	1385551	34C-CLA3000	Pivot Arm	77	1494742	77-SSVI4500LL	Live Liner Stop Claw
35	1474154	35-SLAI113500	Line Roller	77A	1494716	77A-SSVI2500LL	Live Liner Plate
35A	1474155	35A-SLAI113500	Line Roller Bearing	83	1494717	83-SSVI2500LL	Rear Drag Ratchet
35B	1385552	36-CLA3000	Line Roller Sealed Ball Bearing	83B	1494718	83B-SSVI2500LL	Rear Drag Support Assembly
36	1277061	36-SSV5500	Line Roller Screw	85	1494719	85-SSVI2500LL	Rear Drag Washer (2req.)
36B	1417809	36B-CLA6000	Bail Arm Screw Washer	85B	1494720	85B-SSVI2500LL	Rear Drag Eared Washer
38	1418993	38-SLA3500	Rotor Nut	86	1494743	86-SSVI4500LL	Spring
38A	1385554	38A-CLA2000	Screw (3req.)	86A	1494722	86A-SSVI2500LL	Rear Drag Nut
38D	1257343	38D-SLA3500	Washer	88	1611004	88-SSVII12500LL	Rear Drag Knob
38E	1418958	38E-SLA3500	Pinion Gear Seal	88E	1494724	88E-SSVI2500LL	O-Ring
38F	1418959	38F-SLA3500	Rotor-Main Shaft Seal	88D	1494725	88D-SSVI2500LL	Retainer
39	1494736	39-SSVI4500LL	Main Shaft	95B	1419009	95B-SLA3500	Rotor Nut Locking Plate
39A	1494694	39A-SSVI2500LL	Spool Adjust Washer (2req.)	98	1276966	98-SSV3500	One Way Clutch Bearing Assembly
40	1422917	40-SLA3500	Washer	132	1474156	132-SLLAI113500	Line Roller Collar
43	1494737	43-SSVI4500LL	Oscillation Slider	226A	1385651	226A-CLA2000	Rear Cover Screw
43A	1276996	43A-SSV4500LL	Oscillation Slider Guide	226B	1494727	226B-SSVI2500LL	Knob Seal
43D	1483105	43B-CFTII4000LC	Screw	231	1494744	231-SSVI4500LL	Oscillation Gear
45	1494738	45-SSVI4500LL	Body Cover Assembly	231A	1385595	231A-CLA2000	Oscillation Gear Bushing
46	1276949	46-SSV3500	Body Cover Screw (2req.)	231B	1307857	231B-SSV3500	O/S Gear Screw
46A	1277128	46A-SSV6500LL	Body Cover Screw (2req.)	231C	1385594	231C-CLA2000	O/S Gear Washer
46T	1277046	22-SSV5500	Rotor Cover Screw	233A	1419015	233A-SLA3500	Handle Cap Assembly
47	1611020	47-SSVII14500LL-US	Spool Assembly	233C	1419016	233C-SLA3500	Handle Cap Seal



Thank you for your recent PENN gear purchase. No matter where you fish or what you fish for, you can depend PENN to perform in any battle day in and day out. Now it's time to get your product registered and get out on the water.

<https://register.pennfishing.com>