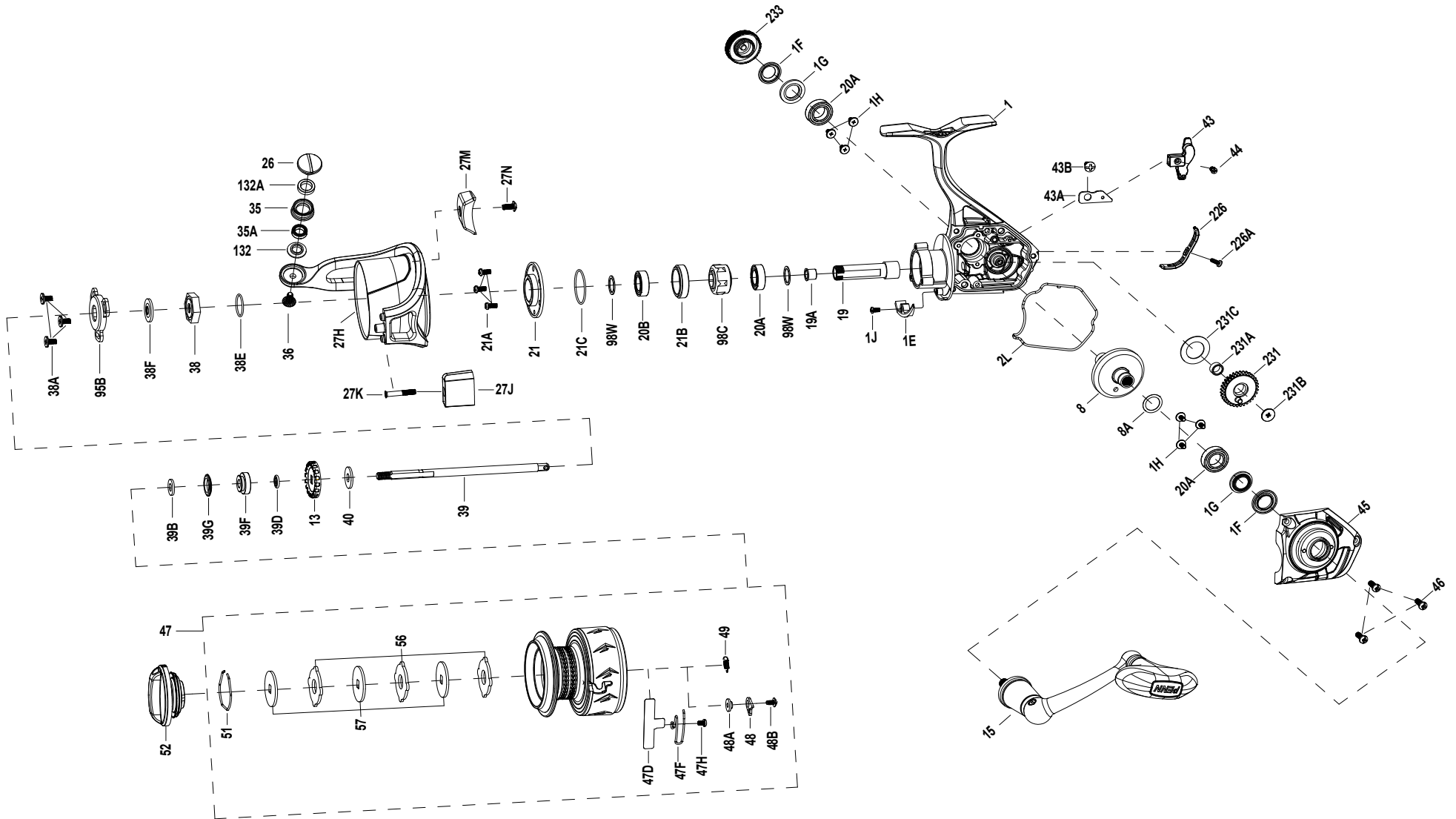




SSVII4500BLS  
EXPLODED DRAWING





Thank you for your recent PENN gear purchase. No matter where you fish or what you fish for, you can depend PENN to perform in any battle day in and day out. Now it's time to get your product registered and get out on the water.

<https://register.pennfishing.com>

KEY NO.	PART NO.	PENN STYLE NO.	DESCRIPTION	KEY NO.	PART NO.	PENN STYLE NO.	DESCRIPTION	KEY NO.	PART NO.	PENN STYLE NO.	DESCRIPTION
1	1612350	1-SSVII4500BLS	Housing Assembly	27N	1203997	43B-3000PUR	Screw	47F	1612348	47F-SSVII4500	Line Clip Spring
1F	1543684	1F-SSVI4500BLS	Main Gear Seal Ring (2 req)	35	1489249	35-SSVI4500BLS	Line Roller	47H	1529492	47H-BTLIII5000	Line Clip Spring Screw
1G	1489175	1G-SSVI3500	Seal Plate (2 req)	35A	1489200	35A-SSVI3500	Roller Bearing	48	1211604	48-3000SG	Click Tongue
1H	1489176	1H-SSVI3500	Bearing Screw(6 req)	36	1191699	36-3000SG	Bail Stud Screw	48A	1214226	48A-3000SG	Click Tongue Washer
2L	1489178	2L-SSVI3500	Housing Seal Ring	38	1489201	38-SSVI3500	Rotor Nut	48B	1489220	48B-SSVI3500	Spool Click Screw
8	1612316	8-SSVII2500	Main Gear	38A	1308069	38A-CFT3000	Cover Screw (3 req)	49	1211605	49-3000SG	Click Tongue Spring
8A	1191028	8A-3000SG	Shim	38E	1489203	38E-SSVI3500	Rotor O Ring	51	1308078	51-CFT3000	Drag Retaining Ring
13	1489180	13-SSVI3500	Click Ratchet	38F	1489204	38F-SSVI3500	Main Shaft Seal Ring	52	1489221	52-SSVI3500	Drag Knob Assembly
15	1489181	15-SSVI3500	Handle Assembly	39	1489238	39-SSVI4500	Main Shaft	56	1308080	56-CFT3000	Drag Washer (3 req)
19	1612343	19-SSVII3500	Pinion Gear	39B	1489206	39B-SSVI3500	Thrust Washer	57	1489222	57-SSVI3500	Keyed Washer (3 req)
19A	1191252	19A-3000SG	Pinion Bushing	39D	1489207	39D-SSVI3500	Spool Bushing Seal Ring	95B	1489223	95B-SSVI3500	Rotor Nut Cover
20A	1308050	20-CFT3000	Ball Bearing (3 req)	39F	1489208	39F-SSVI3500	Spool Bushing	98C	1308082	98C-CFT3000	Clutch/Sleeve Assembly
20B	1308051	20A-CFT3000	Upper Pinion Ball Bearing	39G	1489209	39G-SSVI3500	Spool Seal Ring	98W	1204004	98W-3000PUR	Clutch Washer (2 req)
21	1489183	21-SSVI3500	Bearing Retainer	40	1489210	40-SSVI3500	Main Shaft Washer	132	1489248	132-SSVI4500BLS	Roller Washer
21A	1489184	21A-SSVI3500	Screw (3 req)	43	1489211	43-SSVI3500	Crosswind Block	132A	1489225	132A-SSVI3500	Line Roller Bushing
21B	1489185	21B-SSVI3500	Collar	43A	1489212	43A-SSVI3500	Crosswind Block Plate	226	1489226	226-SSVI3500	Rear Cover
21C	1489186	21C-SSVI3500	Bearing Retainer O Ring	43B	1489213	43B-SSVI3500	Plate Screw	226A	1489227	226A-SSVI3500	Rear Cover Screw
26	1489923	26-SSVI4500BLS	Line Slider	44	1489214	44-SSVI3500	Crosswind Block Screw	231	1489241	231-SSVI4500	Crosswind Gear
27H	1516455	27H-SSVI4500BLS	Rotor Assembly	45	1489239	45-SSVI4500	Housing Cover Assembly	231A	1489229	231A-SSVI3500	Crosswind Gear Bushing
27J	1489244	27J-SSVI4500BLS	Clump Weight	46	1192645	21A-5000SG	Screw (3 req)	231B	1489230	231B-SSVI3500	Crosswind Gear Screw
27K	1489245	27K-SSVI4500BLS	Clump Weight Screw	47	1612351	47-SSVII4500BLS	Spool Assembly	231C	1489231	231C-SSVI3500	Crosswind Gear Washer
27M	1489246	27M-SSVI4500BLS	Clump Weight	47D	1612339	47D-SSVII2500	Line Clip	233	1547218	233-SSVI3500	Bearing Cover Assembly