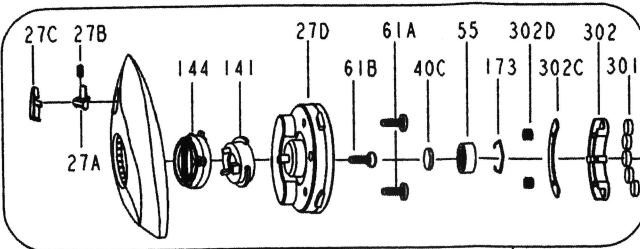
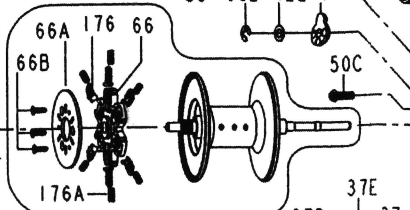




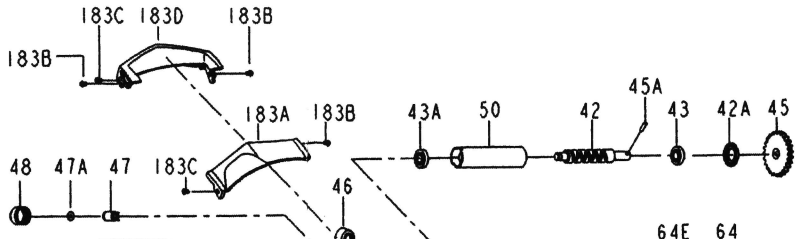
# PARTS LIST FOR MODEL SAR64LP



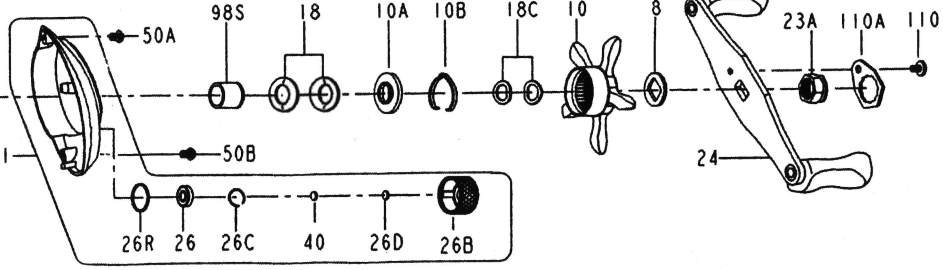
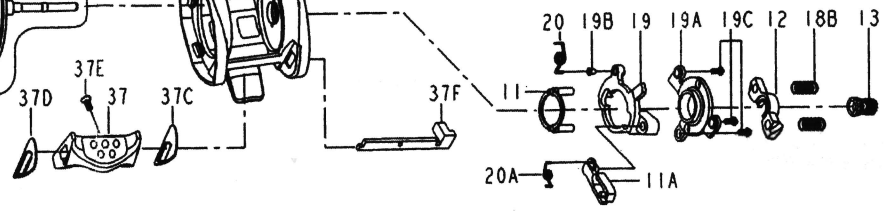
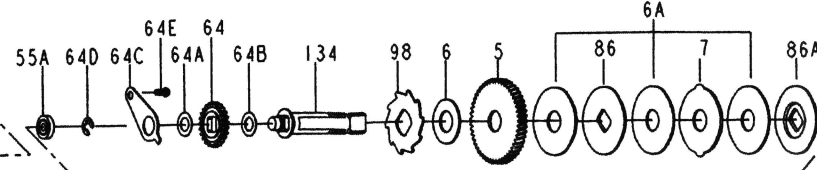
27



29



183



[www.PENNparts.com](http://www.PENNparts.com)

**Scott's Bait & Tackle**  
 Penn Parts Dept.  
 945 Radio Road  
 Tuckerton NJ 08087  
 (609) 296-1300  
 No Minimum Order!  
 Plus, Parts in stock  
 that Penn doesn't  
 carry anymore.

# Penn Reel Parts list for Model: SAR64LP Sargus Baitcaster

KEY PART			KEY PART		
NO	NO.	DESCRIPTION	NO	NO.	DESCRIPTION
1	1-SAR	R.S. PLATE ASSEMBLY	44	44-PUR	BUSHING L.S. WORM
5	5-PUR	MAIN GEAR	45	45-PUR	GEAR, WORM
6	6-965	WASHER, RATCHET	45A	45A-PUR	PIN, WORM SHAFT
6A	6-PUR	WASHER, DRAG (3 REQUIRED)	46	46-PUR	CARRIAGE ASSEMBLY
7	7-PUR	WASHER, METAL EARRED	47	47-PUR	PAWL, LINE GUIDE
8	8-PUR	WASHER, HANDLE	47A	47A-PUR	WASHER, PAWL
10	10-PUR	STAR DRAG	48	48-PUR	SCREW, PAWL COVER
10A	10A-PUR	HOLDER, CLICK	50	50-PUR	SHIELD, WORM SHAFT
10B	10B-PUR	SPRING, CLICK LEAF	50A	50A-PUR	SCREW, R.S. PLATE
11	11-PUR	HOLDER, YOKE	50B	50B-PUR	SCREW, R.S. PLATE
11A	11A-PUR	PAWL, RETURN	50C	50C-PUR	SCREW, R.S. FRAME
12	12-PUR	YOKE	55	55-PUR	BEARING, L.S. PLATE
13	13-PUR	PINION GEAR	55A	55A-PUR	BEARING, R.S. FRAME
18	18-965	WASHER, DRAG SPRING (2 REQUIRED)	58	58-PUR	POST, LINE GUIDE
18B	18B-PUR	SPRING, CLUTCH (2 REQUIRED)	61A	61A-PUR	SCREW, RING (2 REQUIRED)
18C	18C-PUR	WASHER, SPRING (2 REQUIRED)	61B	61B-PUR	SCREW, SPOOL COVER
19	19-PUR	CAM, CLUTCH	64	64-PUR	GEAR, WORM DRIVE
19A	19A-PUR	PLATE, CLUTCH CAM	64A	64A-PUR	WASHER
19B	19B-PUR	BUSHING, CLUTCH CAM PLATE	64B	64B-PUR	WASHER (G/METAL)
19C	19C-PUR	SCREW, CLUTCH CAM (3 REQUIRED)	64C	64C-PUR	PLATE, BEARING
20	20-PUR	SPRING, TORSION	64D	64D-PUR	RING, RETAINING
20A	20A-PUR	SPRING, RETURN TORSION	64E	64E-PUR	SCREW, BEARING PLATE
23A	23A-PUR	NUT, HANDLE	66	66-PUR	HOLDER, BRAKE SHOE
24	24-PUR	HANDLE ASSEMBLY	66A	66A-SAR	PLATE, BRAKE HOLDER
26	26-PUR	BEARING, R.S. PLATE	66B	66B-PUR	SCREW, BRAKE (3 REQUIRED)
26B	26B-SAR	CAST CONTROL CAP ASSEMBLY	69B	69B-PUR	E RING, WORM
26C	26C-PUR	RETAINER, BEARING	86	86-PUR	WASHER, KEYED
26D	26D-PUR	WASHER, TENSION	86A	86A-PUR	WASHER, METAL KEYED TOP
26R	26R-PUR	O RING	98	98-PUR	RATCHET, ANTI-REVERSE
27	27-SAR	L.S. PLATE ASSEMBLY	98S	98S-PUR	SLEEVE, ROLLER CLUTCH
27A	27A-PUR	PIN, LOCKING	110	110-PUR	SCREW, HANDLE LOCK
27B	27B-PUR	SPRING, PUSH BUTTON	110A	110A-PUR	PLATE, HANDLE LOCKING
27C	27C-PUR	BUTTON ASSEMBLY	134	134-PUR	GEAR STUD
27D	27D-SAR	BRAKE COVER ASSEMBLY	141	141-SAR	CAM, CAST CONTROL SLIDE
29	29-SAR	SPOOL ASSEMBLY	144	144-SAR	CAST CONTROL DIAL ASSEMBLY
37	37-SAR	CLUTCH BAR	173	173-PUR	RETAINER, L.S. BEARING
37C	37C-PUR	PLATE, R.S. CLUTCH BAR	176	176-PUR	SHOE, BRAKE (6 REQUIRED)
37D	37D-PUR	PLATE, L.S. CLUTCH BAR	176A	176A-PUR	SPRING, BRAKE SHOE (6 REQUIRED)
37E	37E-PUR	SCREW, CLUTCH BAR	183	183-SAR	HOUSING FRAME
37F	37F-PUR	LINK, CLUTCH BAR	183A	183A-SAR	THUMB REST
40	40-PUR	WASHER, THRUST	183B	183B-PUR	SCREW, R.S. THUMB REST (3 REQUIRED)
40C	40C-PUR	WASHER, METAL THRUST	183C	183C-PUR	SCREW, L.S. THUMB REST (2 REQUIRED)
42	42-PUR	SHAFT, WORM	183D	183D-SAR	COVER, FRONT FRAME
42A	42A-PUR	BUSHING, R.S. WORM	301	301-SAR	MAGNET (5 REQUIRED)
42L	42L-PUR	WASHER, L.S. WORM	302	302-SAR	HOLDER, MAGNET
43	43-SAR	GEAR, WORM	302C	302C-SAR	PLATE, MAGNET HOLDER
43A	43A-SAR	L S WORM BEARING	302D	302D-SAR	SPRING, MAGNET HOLDER (2 REQUIRED)

NOTE: Many of [www.pennparts.com](http://www.pennparts.com) schematics include changes that were either made by Penn, or errors found and corrected by our parts dept.

SBT Ver. 050208 (based on Penn's Rev 00)