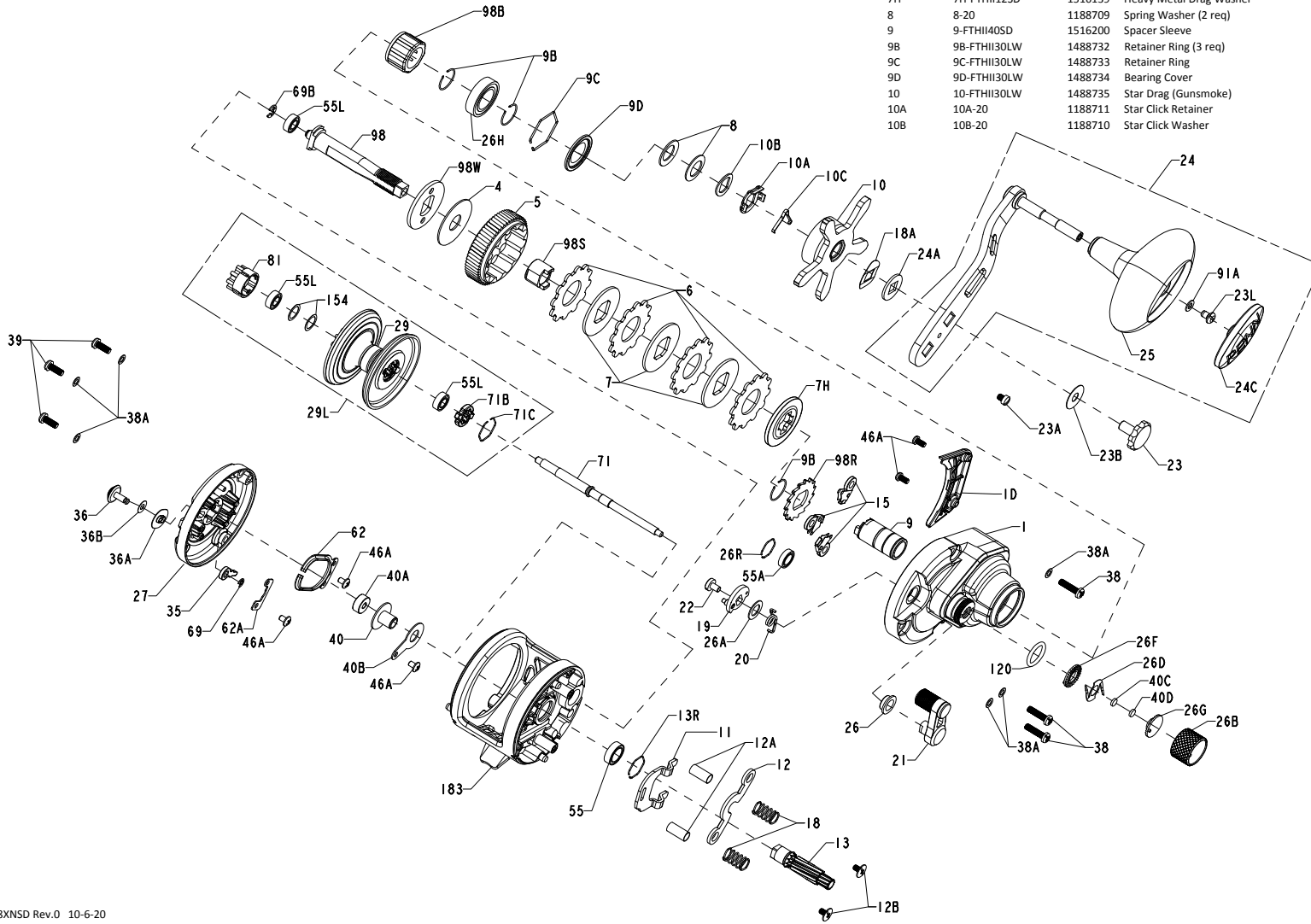




PARTS LIST FATHOM II 8XNSD

REEL PART NO. 1525510



Key No.	Penn Style No.	Part No.	Description	Key No.	Penn Style No.	Part No.	Description
1	1-FTHI8XNSD	1541100	Right Side Plate Assembly	10C	10C-525MAG2	1188712	Star Click Spring
1D	1D-FTHI15SD	1516145	Gearbox Cover	11	11-FTHSD12	1242791	Eccentric Jack
4	4-FTHI30LW	1488726	Drag Washer	12	12-FTHSD12	1318919	Pinion Yoke
5	5-FTHI40SD	1516199	Main Gear	12A	12A-20	1208062	Yoke Post Bushing (2 req)
6	6-TRQ40	1237037	Drag Washer Tab (4 req)	12B	12B-FTHI30LW	1488739	Pinion Yoke Screw (2 req)
7	7-FTHI12SD	1516068	Keyed Metal Drag Washer (3 req)	13	13-FTHI40SD	1516201	Pinion
7H	7H-FTHI12SD	1516139	Heavy Metal Drag Washer	13R	13R-TRQ40	1229364	Retaining Ring
8	8-20	1188709	Spring Washer (2 req)	15	15-20	1188675	Anti Reverse Dog (3 req)
9	9-FTHI40SD	1516200	Spacer Sleeve	18	18-20	1188688	Pinion Yoke Spring (2 req)
9B	9B-FTHI30LW	1488732	Retainer Ring (3 req)	18A	18A-20	1188714	Keyed Spring Washer
9C	9C-FTHI30LW	1488733	Retainer Ring	19	19-20	1188691	Eccentric
9D	9D-FTHI30LW	1488734	Bearing Cover	20	20-FTHSD12	1242806	Eccentric Spring
10	10-FTHI30LW	1488735	Star Drag (Gunsmoke)	21	21-FTHI20LW	1488792	Eccentric Lever (Gunsmoke)
10A	10A-20	1188711	Star Click Retainer	22	22-20	1188690	Eccentric Screw
10B	10B-20	1188710	Star Click Washer	23	23-FTH20LW	1208117	Handle Screw
				23A	23A-20	1188717	Handle Lock Screw
				23B	23B-20	1207784	Handle Screw Washer
				23L	23L-750	1191283	Screw
				24	24-20	1188716	Handle Assembly
				24A	24A-20	1188715	Handle Thrust Washer
				24C	24C-66	1191335	Cap- Handle Knob
				25	25-TRQ40	1240293	Handle Knob
				26	26-20	1188692	Bushing
				26A	26A-FTHSD12	1242792	Washer
				26B	26B-FTHI30LW	1488746	Spool Tension Knob (Gunsmoke)
				26D	26D-525MAG2	1125769	Click Spring
				26F	26F-525MAG2	1125768	Click Plate A
				26G	26G-525MAG2	1125772	Click Plate B
				26H	26-TRQ40NLD2	1265023	Ball Bearing
				26R	26R-525MAG2	1214654	Ring Retaining
				27	27-FTHI8XNSD	1541101	Left Side Plate Assembly
				29	29-FTHI8XNSD	1541102	Spool (Gunsmoke/Gold)
				29L	29L-FTHI8XNSD	1541103	Spool Assembly
				35	35-20	1188656	Alarm Pawl
				36	36-FTHI15SD	1516151	Click Button
				36A	36A-FTH20LW	1208113	Click Washer
				36B	36B-20	1188651	Washer
				38	38-20	1188698	Screw (3 req)
				38A	38A-20	1188649	Flat Washer (6 req)
				39	39-20	1188638	Screw (3 req)
				40	40-FTHI15SD	1516206	Bushing L. S. Spool
				40A	40A-FTHSD12	1242804	Bearing
				40B	40B-FTHI15SD	1516152	Protector Bearing
				40C	40C-525MAG2	1208115	Washer, Friction
				40D	40D-525MAG2	1125771	Washer, Rubber Thrust
				46A	46A-FTHI30LW	1488755	Cover Plate Screw (5 req)
				55	55-525MAG2	1214665	Ball Bearing
				55A	55A-525MAG2	1214666	Ball Bearing
				55L	55L-965	1192031	Bearing Spool (3 req)
				62	62-20	1188664	Click Spring
				62A	62A-20	1188653	Click Spring Guard
				69	69-20	1188657	Retainer
				69B	69B-600	1184129	Ring Retaining
				71	71-FTHI8XNSD	1541104	Spindle
				71B	71B-FTHI30SD	1516190	Spool Driver
				71C	71C-TRQ40	1230227	Retaining Ring
				81	81-TRQ40	1230303	Ratchet Click
				91A	91A-TRQ40NLD2	1277514	Handle Knob Washer
				98	98-FTHI40SD	1516208	Main Gear Shaft
				98B	98B-FTHI30LW	1488764	IAR Bearing
				98R	98R-FTHI30LW	1488765	Ratchet
				98S	98S-FTHI40SD	1516209	Gear Stud Bushing
				98W	98W-FTHI30LW-1	1516218	Thrust Washer
				120	120-113H	1184522	O-Ring
				154	154-FTHSD12	1242803	Shim (As Needed)
				183	183-FTHI8XNSD	1541105	Frame Assembly

407-FTHI8XNSD Rev.0 10-6-20
1541106

WARNING: Cancer and Reproductive Harm – www.P65Warnings.ca.gov/products