

After removing the base plate and swivel base cover, remove the lock nut with a $\frac{3}{4}$ " socket or box wrench. Then lift off the entire swivel base top, locking ring, and adjusting ring. When removing the adjusting ring, be careful not to lose the two return springs.

During maintenance, make sure that all inside surfaces are clean and dry, then thoroughly lubricate the brass shaft in the center of the swivel base bottom with waterproof grease. Clean the two returns springs and lubricate with a light oil.

In order to re-assemble the 622, begin by installing the (2) return springs into the (2) longer pockets, which are located opposite each other on the swivel base bottom.

Next, locate the small circular indentations on the swivel base bottom and adjusting ring. Line these indentations up, and carefully lower the adjusting ring onto the swivel base bottom. While applying downward pressure, slowly rotate the adjusting ring clockwise until it drops fully into position. Check to be sure that the cam followers (raised bumps) on the adjusting ring are lined up with the vertical channels on the swivel base bottom.

Next, slide the serrated locking ring onto the swivel base bottom. Position is not important, as long as the teeth point up.

Look inside the swivel base top and make sure that the large white plastic washer is snapped in place. The notch on the washer should be lined up with the oval

access hole on the swivel base top.

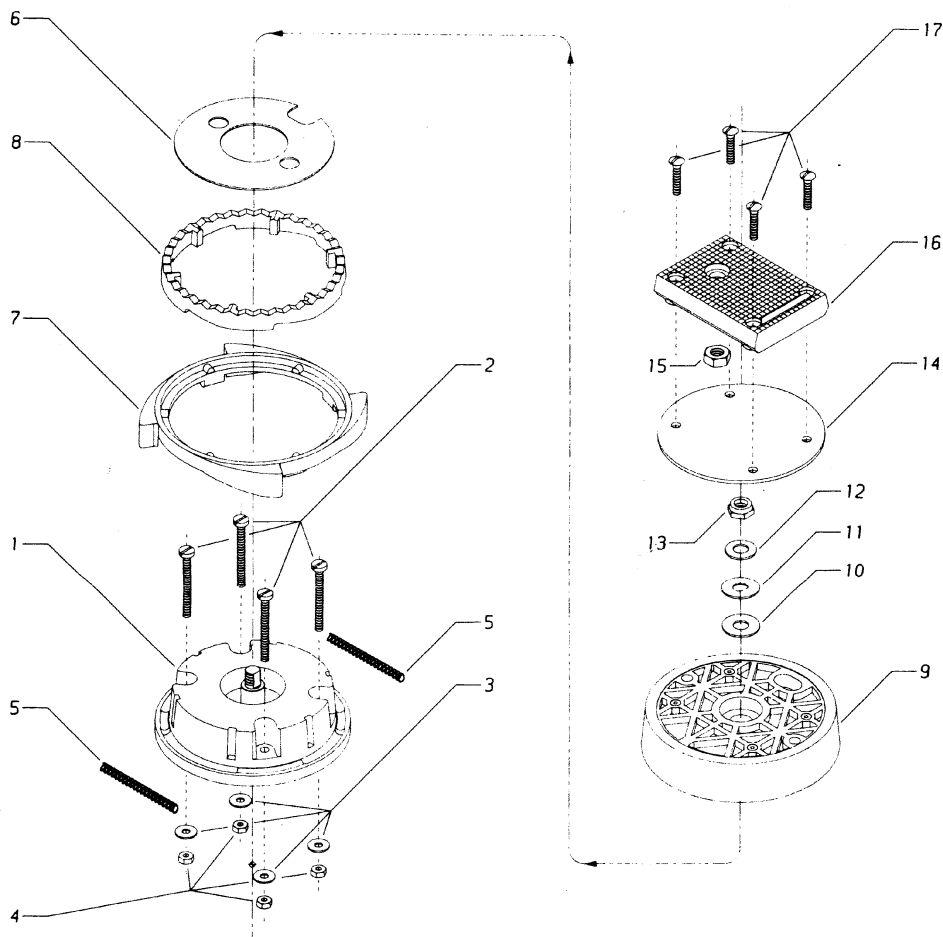
Carefully place the swivel base top onto the brass shaft, and secure with the lock nut and hardware. (Use the exploded view as a guide for correct installation of lock nut hardware.) Check that the 622 Adjustable Base is operating properly by pushing the adjustable ring counter-clockwise until reaching a positive stop. Holding that position, the swivel base top should rotate easily and quietly. Release the adjusting ring to return it to the locked position.

Before re-installing the swivel base cover and base plate, coat the base mounting screw threads and base plate nut threads with waterproof grease. When re-installing hardware, secure tightly, but be sure not to over tighten.

PARTS & ASSEMBLY GUIDE



622 SWIVEL-MATIC BASE



Penn Reel Parts list for:

Model: 622 Swivel-Matic Base

KEY PART

NO	NO.	DESCRIPTION
1	238-622	SWIVEL BASE BOTTOM
2	250-620	SWIVEL BASE MOUNTING SCREW (4 REQ.)
3	220-600	MOUNTING SCREW WASHER (4 REQ.)
4	211-600	MOUNTING SCREW NUT (4 REQ.)
5	14-622	RETURN SPRING (2 REQ.)
6	240-622	SWIVEL BASE WASHER
7	238A-622	ADJUSTING RING
8	237A-622	LOCKING RING
9	237-622	SWIVEL BASE TOP
10	249-620	SWIVEL DRAG WASHER
11	241-620	METAL DRAG WASHER
12	18-970	TENSION WASHER
13	23-130	LOCK NUT
14	239-620	SWIVEL BASE COVER
15	193-600	BASE PLATE NUT
16	133-600	BASE PLATE
17	209-620	BASE PLATE MOUNTING SCREW (4 REQ.)

NOTE: Many of www.pennparts.com schematics include changes that were either made by Penn, or errors found and corrected by our parts dept.