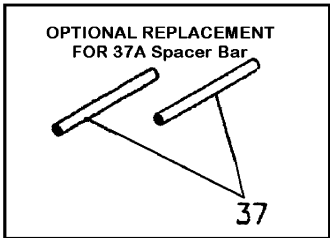
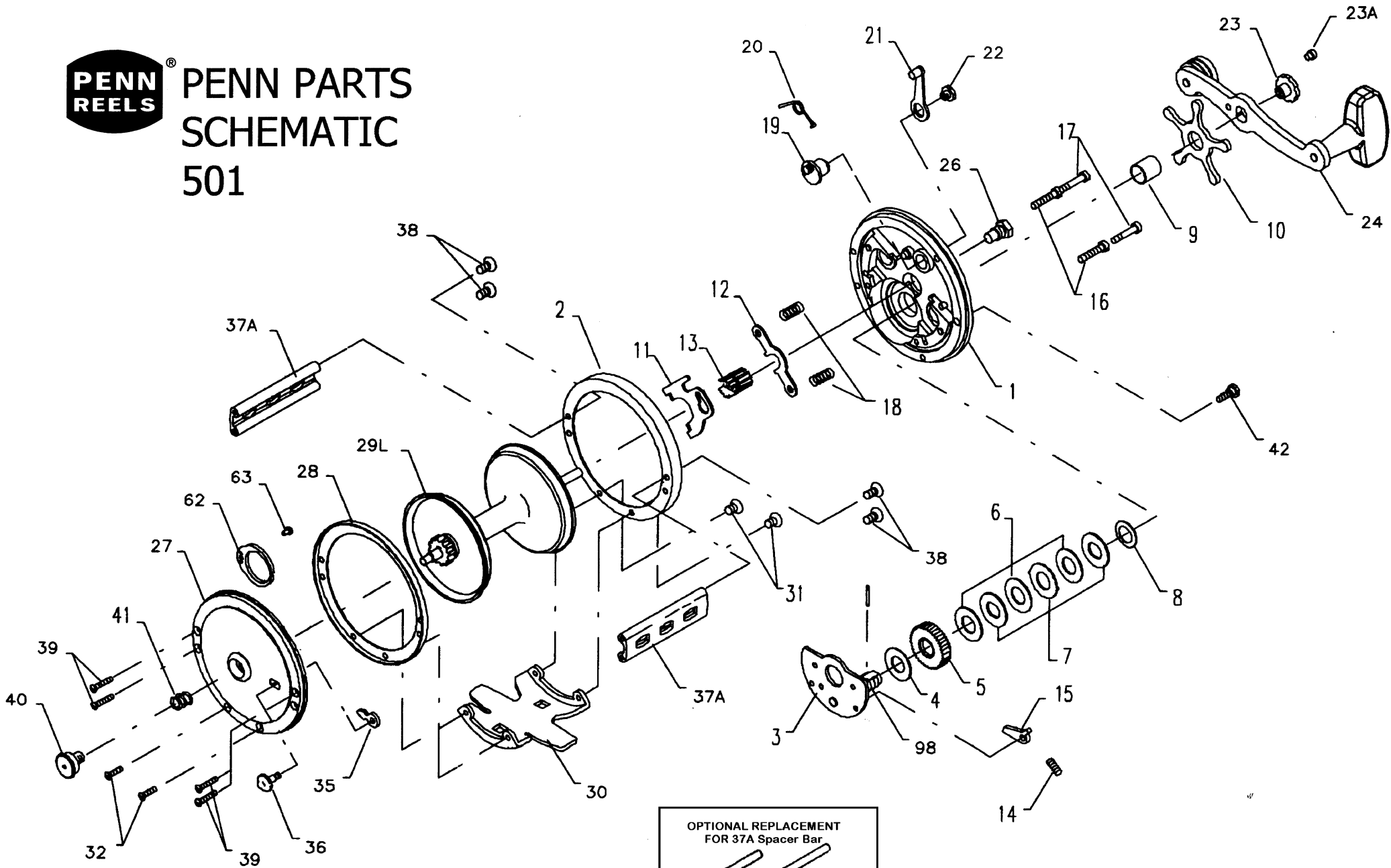




PENN PARTS SCHEMATIC 501



Penn Reel Parts list for Model: 501

KEY PART			KEY PART		
NO	NO.	DESCRIPTION	NO	NO.	DESCRIPTION
1	1-501	HANDLE SIDE PLATE	26	26-155	HANDLE SIDE BEARING
2	2-250	HANDLE SIDE RING	27	27-500	NON-HANDLE SIDE PLATE
3	**3-500S	BRIDGE W/ SLEEVE	28	28-250	NON-HANDLE SIDE RING (INNER)
4	4-60	FIBER WASHER	29L	29L-501	SPOOL
5	5-500	MAIN GEAR	30	30-49	STAND
6	6-309	DRAG WASHER (3 REQ.)	31	31-19	HANDLE SIDE STAND SCREW (2 REQ.)
7	7C-500	METAL WASHER SET	32	32-16CH	NON-HANDLE SIDE STAND SCREW
8	8-60	TENSION SPRING	33	33-49	ROD CLAMP
9	9-60	SPACING SLEEVE	34	34-49	CLAMP SCREW
10	***10-505	STAR DRAG WHEEL	34C	34C-49	CLAMP SCREW W/ NUTS
11	11-99	ECCENTRIC JACK	35	35-60	CLICK TONGUE
12	12-500	PINION YOKE	36	36-60CH	CLICK BUTTON
13	13-500	PINION	37	37-180	POST (OPTIONAL)
14	14-500	DOG SPRING			USE 2 IN PLACE OF 1 SPACER BAR
15	15-500	DOG	37A	37A-506	SPACER BAR
16	16-60CH	LOWER BRIDGE SCREW	38	38-7	HANDLE SIDE SPACER SCREW (4 REQ.)
17	17-60CH	UPPER BRIDGE SCREW	39	39-5	NON-HANDLE SIDE SPACER SCREW (4 REQ.)
18	18-60	CLUTCH SPRING	40	40-60	NON-HANDLE SIDE BEARING
19	19-250	ECCENTRIC	41	41-60	BEARING SPRING
20	20-60L	ECCENTRIC SPRING	42	129-200	TAKE APART THUMB SCREW
21	21-66	ECCENTRIC LEVER	62	62-309	CLICK SPRING
22	22-99	ECCENTRIC SCREW	63	63-209	CLICK SPRING SCREW
23	23-60	HANDLE SCREW	98	****98-505	GEAR SLEEVE
23A	110-60	HANDLE LOCK SCREW	149A	149-200	HEX NUT (2 REQ.)
24	24-155	HANDLE	*	152-200	CLAMP WING NUT (501-2 REQ.)

* Not Shown

** Fine tooth sleeve, older reels take a 3-500 with a coarse tooth sleeve, bridge will still be stamped 3500s

*** Fine tooth star drag, older reels take a 10-60 or a 10-140 with a coarse thread

**** Fine tooth gear sleeve, older reels take a 98-60 with a coarse thread

NOTE: Many of www.pennparts.com schematics include changes that were either made by Penn, or errors found and corrected by our parts dept.

SBT Version 052506