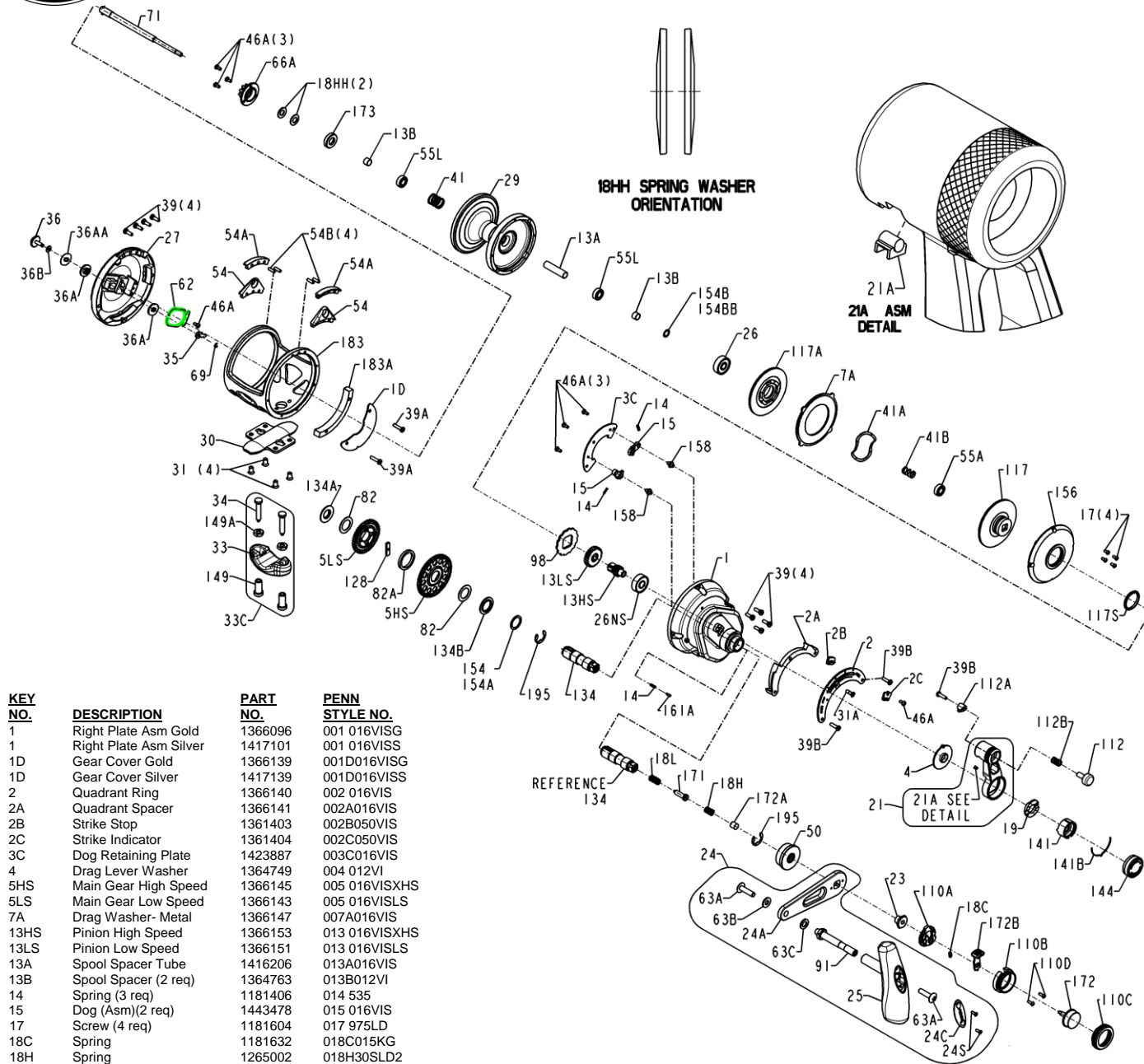




MODELS 16VISX, Gold, 1370777 and 16VISXS, Silver, 1419229



KEY NO.	DESCRIPTION	PART NO.	PENN STYLE NO.
1	Right Plate Asm Gold	1366096	001 016VISG
1	Right Plate Asm Silver	1417101	001 016VISS
1D	Gear Cover Gold	1366139	001D016VISG
1D	Gear Cover Silver	1417139	001D016VISS
2	Quadrant Ring	1366140	002 016VIS
2A	Quadrant Spacer	1366141	002A016VIS
2B	Strike Stop	1361403	002B050VIS
2C	Strike Indicator	1361404	002C050VIS
3C	Dog Retaining Plate	1423887	003C016VIS
4	Drag Lever Washer	1364749	004 012VI
5HS	Main Gear High Speed	1366145	005 016VISXHS
5LS	Main Gear Low Speed	1366143	005 016VISLS
7A	Drag Washer- Metal	1366147	007A016VIS
13HS	Pinion High Speed	1366153	013 016VISXHS
13LS	Pinion Low Speed	1366151	013 016VISLS
13A	Spool Spacer Tube	1416206	013A016VIS
13B	Spool Spacer (2 req)	1364763	013B012VI
14	Spring (3 req)	1181406	014 535
15	Dog (Asm)(2 req)	1443478	015 016VIS
17	Screw (4 req)	1181604	017 975LD
18C	Spring	1181632	018C015KG
18H	Spring	1265002	018H30SLD2
18HH	Spring Washer (2 req)	1288188	018HTRQ40NLD2
18L	Spring	1265003	018L30SLD2
19	Drag Cam	1415174	019 016VIS
21	Drag Lever Asm Gold	1366155	021 016VISG
21	Drag Lever Asm Silver	1417108	021 016VISS
21A	Drag Lever Guide	1361392	021A050VIS

KEY NO.	DESCRIPTION	PART NO.	PENN STYLE NO.
23	Screw- Handle	1361394	023 050VIS
24	Handle Assembly	1457210	024 016VISX
24A	Handle Arm	1364771	024 016VIS-1
24C	Knob Cap	1361267	024C016VIS
24S	Screw (2 req)	1362971	024S050VIS

KEY NO.	DESCRIPTION	PART NO.	PENN STYLE NO.
25	Molded Knob	1361269	025 016VIS
26	Ball Bearing (Spool)	1364772	026 016VIS
26NS	Ball Bearing (Right Side)	1435256	026NS025
27	Left Side Plate Gold	1366158	027 016VISG
27	Left Side Plate Silver	1417102	027 016VISS
29	Spool Gold	1366160	029 016VISG
29	Spool Silver	1436649	029 016VISS
30	Stand	1182599	030 016VS
31	Screw- Stand (4 req)	1191562	031 016VS
31A	Screw- Center Quadrant	1361407	031 050VIS
33	Rod Clamp- Silver	1365544	033 TRQS
33C	Rod Clamp Silver Kit	1457209	033C012VIS
34	Screw- Rod Clamp (2 req)	1182786	034 016VS
35	Pawl	1188656	035 20
36	Button	1381335	036 016VIS
36A	Bushing (2 req)	1440378	036A016VIS
36AA	Washer	1309883	036AFTH40NLD2
36B	Washer	1188651	036B20
39	Screw W/Collar(8 req)	1366162	039 012VSXN
39A	Screw (Frame) (2 req)	1229975	039 012VSX
39B	Screw (3 req)	1361411	039 050VIS
41	Spring- Left Side Spool	1364782	041 012VI
41A	Spring- Drag (Wave)	1364783	041A012VI
41B	Spring- Drive Plate Separating	1364784	041B012VI
46A	Screw- PH SS (8 req)	1183585	046A4300
50	Gear Stud Shield	1375470	050 016VISS
54	Harness Lug (2 req)	1366163	054 016VIS
54A	Harness Plug(2 req)	1366164	054A016VIS
54B	Dowel Pin (4 req)	1361422	054B050VIS
55A	Bearing- Drive Plate	1238912	055A050SLD
55L	Bearing Spool (2 req)	1286985	055L020
62	Spring	1188664	062 20
63A	Screw (Handle)(2 req)	1233968	063A012VS
63B	Washer- Handle Screw	1354421	063B016VIS
63C	Washer- Handle Rivet	1361297	063C016VIS
66A	Ratchet (Spool)	1265059	066AFTHLD
69	E-Clip Retainer	1188657	069 20
71	Spindle Assembly	1366165	071 016VIS
82	Washer (2 req)	1265070	082 TRQ40NLD2
82A	Washer- Gear Separating	1265071	082A30SLD2
91	Handle Rivet	1364794	091 016VIS
98	Anti-Reverse Ratchet	1364797	098 012VIS
110A	Shift Button Base	1360907	110A050VIS
110B	Shift Button Body	1360908	110B050VIS
110C	Shift Button Retainer Ring	1362945	110C030VIS
110D	Screw (2 req)	1361350	110D050VIS
112	Strike Button	1361351	112 050VIS
112A	Strike Gate	1361352	112A050VIS
112B	Spring (Strike Button)	1361353	112B050VIS
117	Drive Plate Asm- Outer	1366167	117 016VIS
117A	Drive Plate Asm- Inner	1366169	117A016VIS
117S	Drag Cover Seal	1265080	117STRQ40NLD2
128	Shift Key	1265084	128 30SLD2
134	Gear Stud	1375471	134 016VIS
134A	Nut- Gear Stud	1265086	134A30SLD2
134B	Spacer- Gear	1265087	134B30SLD2
141	Cam Follower	1265088	141 TRQ15LD2
141B	Preset Knob Click Spring	1265089	141BTRQ15LD2
144	Preset Knob	1364804	144 012VI
149	Clamp Nut (2 req)	1184702	149 045
149A	Hex Nut (2 req)	1184706	149 200
154	Gear Shim .010in (as required)	1265092	154 TRQ40NLD2
154A	Gear Shim .004in (as required)	1306668	154ATRQ40NLD2
154B	Spool Shim .012in (as required)	1309903	154BFTH25NLD2
154BB	Spool Shim .008in(as required)	1309904	154BFTH40NLD2
156	Drag Cover	1366171	156 016VIS
158	Dog Pin (2 req)	1361374	158 050VIS
161A	Click Pin (Right Side)	1265098	161ATRQ15LD2
171	Shift Plunger (Screw)	1265101	171 30SLD2
172	Shift Button (Asm)	1362958	172 030VIS
172A	Spacer	1184827	172A050VS
172B	Shift Latch (Molded)	1389390	172B070VIS
173	Bearing Retainer (Spool)	1416208	173 016VIS
183	Frame Gold	1366173	183 016VISXG
183	Frame Silver	1417105	183 016VISXS
183A	Frame Extension Gold	1366174	183A016VISG
183A	Frame Extension Silver	1417106	183A016VISS
195	Retaining Ring (2 req)	1184955	195 040