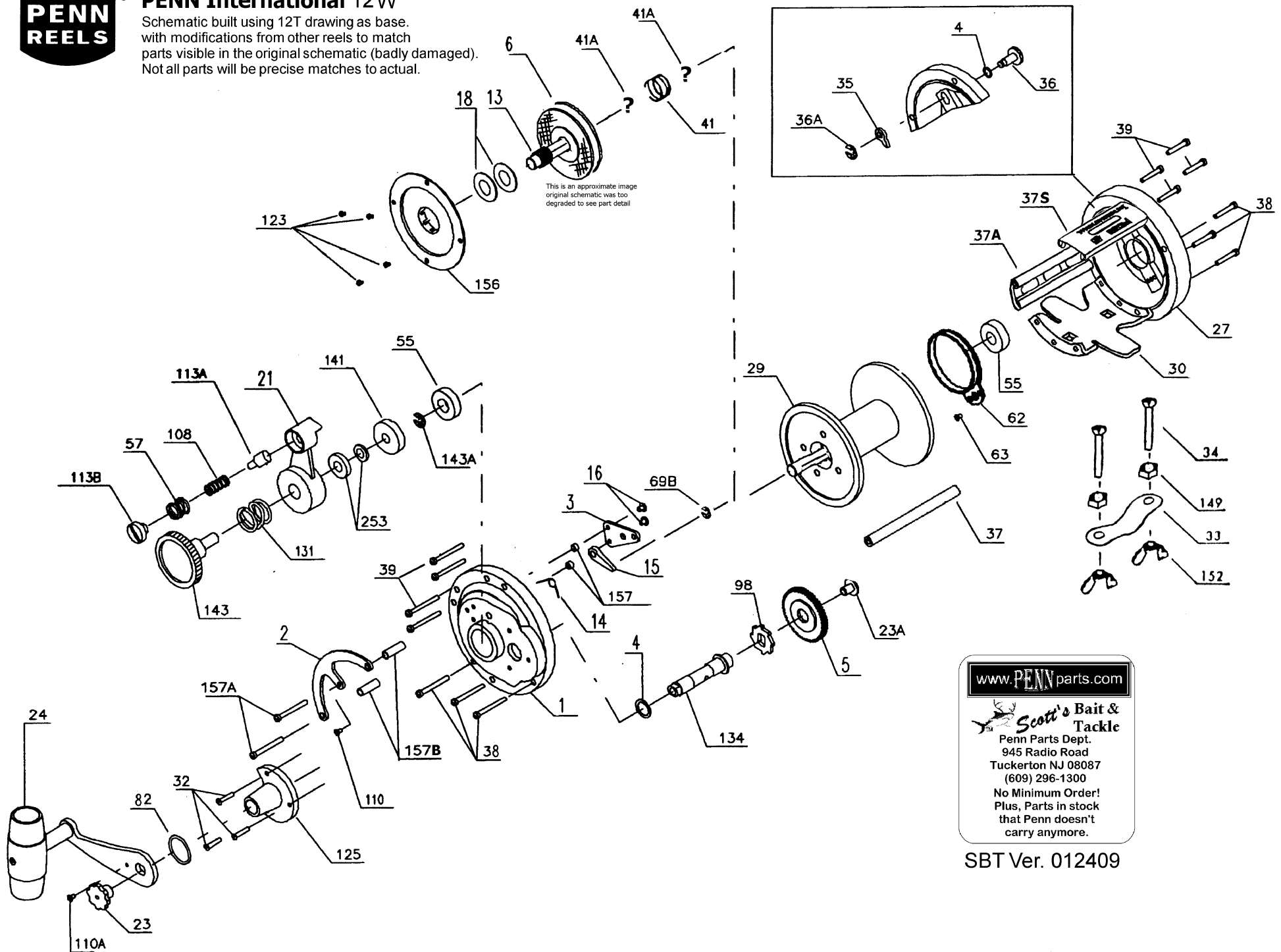


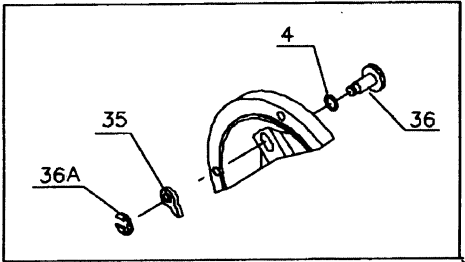


# PENN International 12W

Schematic built using 12T drawing as base. with modifications from other reels to match parts visible in the original schematic (badly damaged). Not all parts will be precise matches to actual.



This is an approximate image original schematic was too degraded to see part detail



[www.PENNparts.com](http://www.PENNparts.com)

**Scott's Bait & Tackle**  
 Penn Parts Dept.  
 945 Radio Road  
 Tuckerton NJ 08087  
 (609) 296-1300

No Minimum Order!  
 Plus, Parts in stock  
 that Penn doesn't  
 carry anymore.

SBT Ver. 012409

# Penn Reel Parts list for Model: 12W International

KEY PART	KEY PART	DESCRIPTION	DESCRIPTION
NO NO.	NO NO.		
1 1-6	38 38-8	RIGHT SIDE PLATE ASSEMBLY	STAND SCREWS (6 REQUIRED)
2 2-6	39 39-6	QUADRANT	SPACER BAR SCREWS (8 REQUIRED)
3 3-6	41 41-6	RATCHET DOG BRIDGE	BEARING SPRING
4 4-12	41A 41A-6	GEAR STUD WASHER	SPRING GUIDE (? IMAGE NOT READABLE ON ORIG.SCHEM)
4A 4-12H	55 55-6	CLICK BUTTON WASHERS (2 REQUIRED) (Old# 4-6)	BALL BEARING (2 REQUIRED)
5 5-6	57 57-109	MAIN GEAR	SPRING (2 REQUIRED)
6 6-6	62 62-309	DRAG WASHER BRAKE LN.	CLICK SPRING
13 13-12	63 63-209	PINION GEAR ASSEMBLY	CLICK SPRING SCREW
14 14-6	69B 69B-50	DOG SPRING	CLICK BUTTON RETAINING RING
15 15-6	82 82-6	DOG	HANDLE SHIM
16 16-9	98 98-6	BRIDGE SCREWS (2 REQUIRED) (Old# 16-6)	GEAR RATCHET
18 18-6	108 108-140	DISC CLUTCH SPRINGS (4 REQUIRED)	DRAG LEVER BUTTON SPRING
21 21-6	110 110-50	ECCENTRIC LEVER	CENTER QUADRANT SCREW (Old # 32-6)
23 23-60	110A 110-60	HANDLE SCREW	HANDLE LOCK SCREW (Old# 23A-60)
23A 23-6CH	113A 113A-6	GEAR SCREW (Old# 23-6)	DRAG LEVER BUTTON
24 24-6	113B 113B-6	HANDLE COMPLETE (24-12LT MAY BE COMPATIBLE)	DRAG LEVER SCREW
27 27-6	123 123-6	LEFT SIDE PLATE ASSEMBLY	DRAG COVER SCREWS (4 REQUIRED) (123-50 MAY BE COMPATIBL)
29 29M-12W	125 125-6	SPOOL	GEAR STUD HOUSING
30 30-112	131 131-6	STAND	PRESENT KNOB SPRING
32 32-14CH	134 134-6	GEAR STUD HOUSING SCREWS (3 REQUIRED) (Old# 32-14	GEAR STUD (134-12H MAY BE COMPATIBLE)
33 33-200	141 141-6	ROD CLAMP	CAM FOLLOWER
** 33R-200	143 143-6	RINGED ROD CLAMP (OPTIONAL)	PRESENT KNOB
34 34-200	143A 143A-6	ROD CLAMP SCREWS (2 REQUIRED)	PRESENT KNOB
35 35-155	149 149-200	CLICK TONGUE	ROD CLAMP HEX NUT (2 REQUIRED)
36 36-6	152 152-200	CLICK BUTTON (36-12H MAY BE COMPATIBLE)	WING NUT (2 REQUIRED)
37 37-12W	156 156-12	FRAME POST	DRAG COVER (156-12H MAY BE COMPATIBLE)
37A 37A-12W	157 157-12	SPACER BAR INTERNATIONAL 12W	BRIDGE SPACER BUSHINGS (2 REQUIRED)
37S 37S-12W	157A 157A-12	STAMPED SPACER BAR INTERNATIONAL 12W	QUADRANT SCREWS (2 REQUIRED)
	157B 157-6		QUADRANT SPACER BUSHINGS (2 REQUIRED)
	253 253-12		THRUST BEARING

**\*\* NOT ON SCHEMATIC - OPTIONAL ITEM**

**NOTE:** Many of [www.pennparts.com](http://www.pennparts.com) schematics include changes that were either made by Penn, or errors found and corrected by our parts dept.  
SBT Ver. 012409

**NOTE:** Where there are parts noted that "may be compatible" - we do not have an old reel to use parts for reference to compare them to modern parts, HOWEVER There are many similarities between parts in the 12T and parts in the older 6, 12, 12W reels, so some of the 12T parts may be subbable. Compatibility not confirmed at this time.