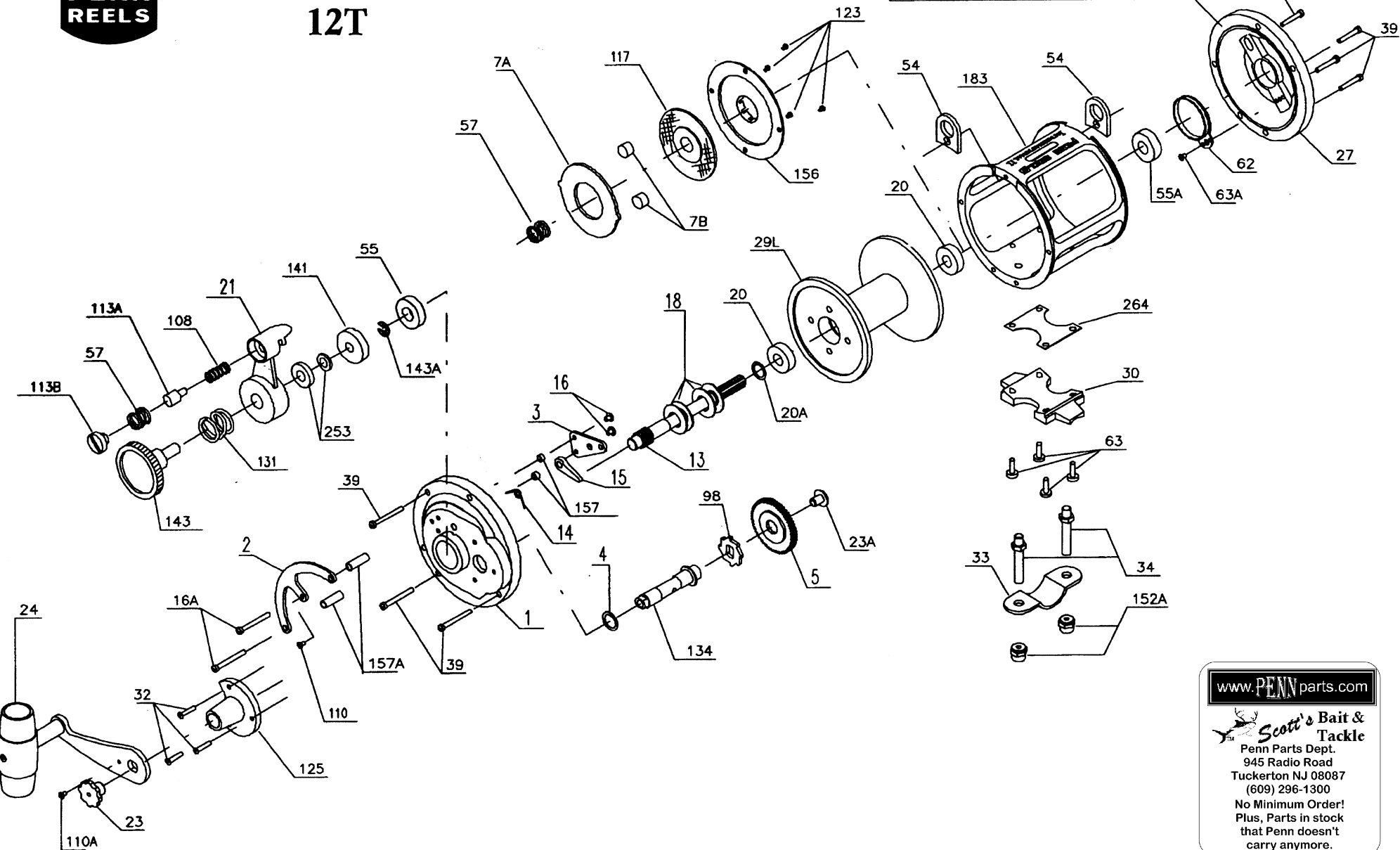
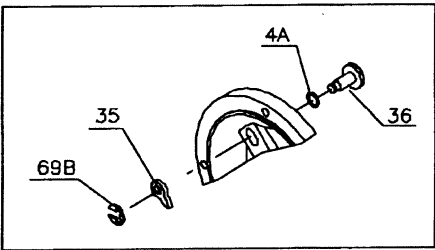




# Penn Schematic 12T



[www.PENNparts.com](http://www.PENNparts.com)

**Scott's Bait & Tackle**  
Penn Parts Dept.  
945 Radio Road  
Tuckerton NJ 08087  
(609) 296-1300

No Minimum Order!  
Plus, Parts in stock  
that Penn doesn't  
carry anymore.

## Penn Reel Parts list for:

## Model: 12T

KEY NO	PART NO.	DESCRIPTION	KEY NO	PART NO.	DESCRIPTION
1	1-12T	RIGHT SIDE PLATE ASSEMBLY	54	54-113	HARNES LUGS (2 REQ.)
2	2-6	QUADRANT	55	55-6	BALL BEARING
3	3-6	RATCHET DOG BRIDGE	55A	55 012H	L.S. PLATE BEARING
4	4-12	GEAR STUD WASHER	57	57-109	SPRING (2 REQ.)
4A	4-12H	CLICK BUTTON WASHERS (2 REQ.)	62	62-309	CLICK SPRING
5	5-12H	MAIN GEAR	63	63-30T	STAND SCREWS (4 REQ.)
7A	7A-6	METAL GEAR DRUM WASHER	63A	63-209	CLICK SPRING SCREW
7B	7B-12H	PRESSURE PLUGS (2 REQ.)	69B	69B-50	CLICK BUTTON RETAINING RING
13	13-12H	PINION GEAR	98	98-6	GEAR RATCHET
14	14-6	DOG SPRING	108	108-140	DRAG LEVER BUTTON SPRING
15	15-6	DOG	110	110-50	CENTER QUADRANT SCREW
16	16-6	BRIDGE SCREWS (2 REQ.)	110A	110-60	HANDLE LOCK SCREW
16A	16-9	QUADRANT SCREWS (2 REQ.)	113A	113A-6	DRAG LEVER BUTTON
18	18-12T	DISC CLUTCH SPRINGS (4 REQ.)	113B	113B-6	DRAG LEVER SCREW
20	20-722	SPOOL BEARINGS (2 REQ.)	117	117-12T	DRIVE PLATE ASSEMBLY
20A	20A-12H	THRUST WASHER	123	123-50	DRAG COVER SCREWS (4 REQ.)
21	21-6	ECCENTRIC LEVER	125	125-6	GEAR STUD HOUSING
23	23-60	HANDLE SCREW	131	131-6	PRESENT KNOB SPRING
23A	23-6CH	GEAR SCREW	134	134-12H	GEAR STUD
24	24-12LT	HANDLE COMPLETE	141	141-6	CAM FOLLOWER
27	27-12T	LEFT SIDE PLATE ASSEMBLY	143	143-6	PRESENT KNOB
29L	29L-12T	SPOOL	143A	143A-6	PRESENT KNOB
30	30-12T	STAND	152A	152A-30T	ROD CLAMP ACORN NUT (2 REQ.)
32	32-14CH	GEAR STUD HOUSING SCREWS (3 REQ.)	156	156-12H	DRAG COVER
33	33-200	ROD CLAMP	157	157-12	BRIDGE SPACER BUSHINGS (2 REQ.)
**33R	33R-200	RINGED ROD CLAMP (OPTIONAL)	157A	157-12T	QUADRANT SPACER BUSHINGS (2 REQ.)
34	34-30T	ROD CLAMP SCREWS (2 REQ.)	183	183-12T	TUBE FRAME
35	35-155	CLICK TONGUE	253	253-12	THRUST BEARING
36	36-12H	CLICK BUTTON	264	264-12T	STAND GASKET
39	39-5	FRAME SCREWS (8 REQ.)			

**\*\* NOT ON SCHEMATIC - OPTIONAL ITEM**

NOTE: Many of [www.pennparts.com](http://www.pennparts.com) schematics include changes that were either made by Penn, or errors found and corrected by our parts dept.