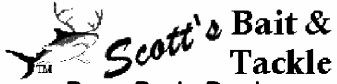


www.PENNparts.com



Penn Parts Dept.  
945 Radio Road  
Tuckerton NJ 08087  
(609) 296-1300

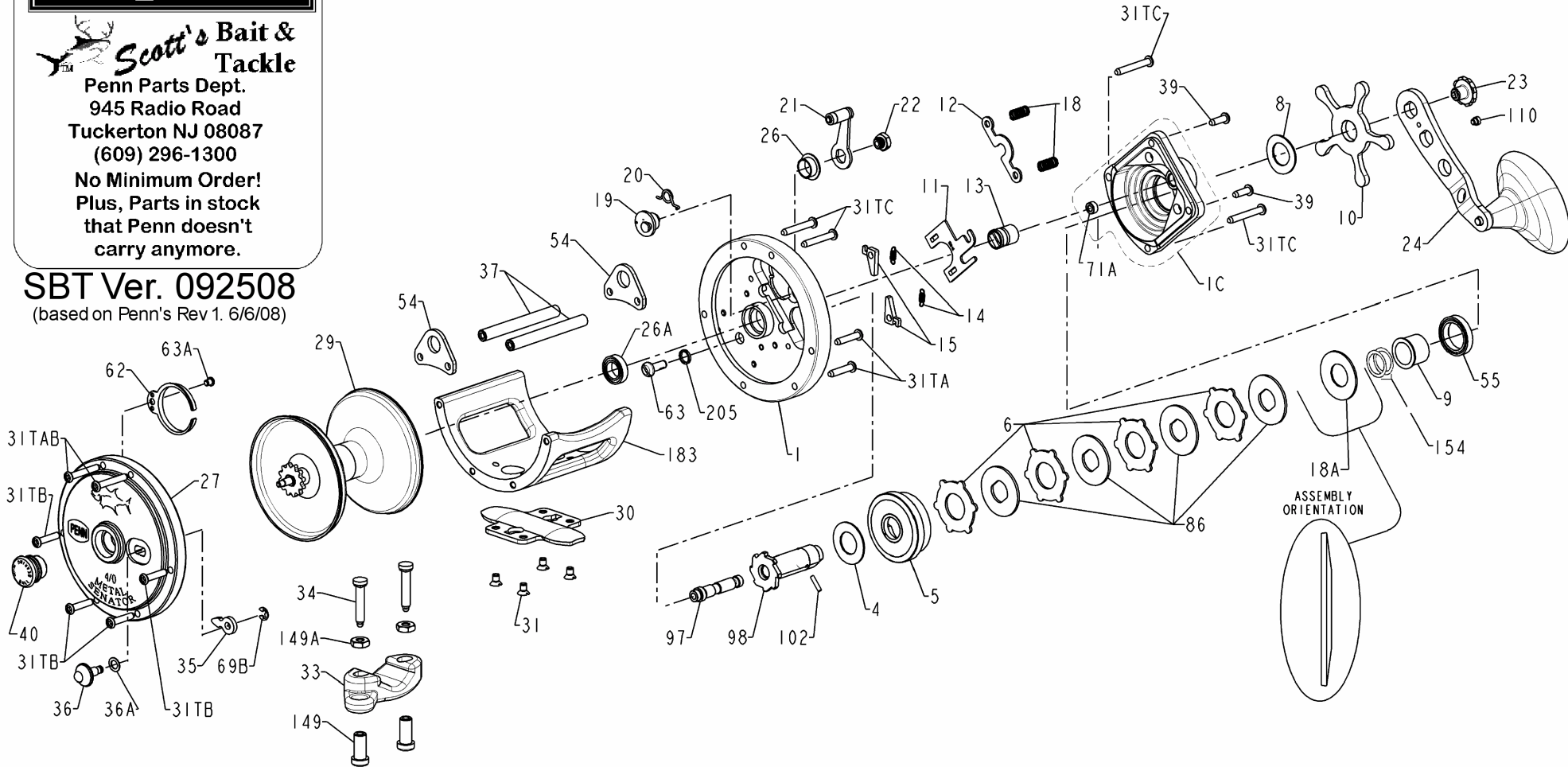
No Minimum Order!  
Plus, Parts in stock  
that Penn doesn't  
carry anymore.

SBT Ver. 092508

(based on Penn's Rev 1. 6/6/08)



PARTS LIST FOR MODEL 113MTL



## Penn Reel Parts list for Model: 113MTL Metal 4/0 Senator

KEY NO	PART NO.	DESCRIPTION	KEY NO	PART NO.	DESCRIPTION
1	1-113M	HANDLE SIDE PLATE	31TA	31TA-200T	HANDLE SIDE PLATE SCREW (FRAME) (2 REQUIRED)
1C	1C-113M	HANDLE SIDE PLATE COVER ASSEMB	31TAB	31TA-300T	NON-HANDLE SIDE PLATE SCREW (POSTS) (2 REQUIRED)
4	4-113M	FIBER WASHER	31TB	31TB-300T	NON-HANDLE SIDE PLATE SCREW (FRAME) (4 REQUIRED)
5	5-113M	MAIN GEAR	31TC	31TC-300T	HANDLE SIDE PLATE SCREW (LOWER COVER & POSTS) (4 REQUIRED)
6	6-525MAG	DRAG WASHER (4 REQUIRED)	33	33N-113	ROD CLAMP
8	8-349	TENSION SPRING	34	34-16VS	CLAMP SCREW (2 REQUIRED)
9	9-113M	SPACING SLEEVE	35	35-60	CLICK TONGUE
10	10-349	DRAG STAR	36	36-113	CLICK BUTTON
11	11-113	ECCENTRIC JACK	36A	36A-300T	CLICK BUTTON WASHER
12	12-113M	PINION YOKE	37	37-113M	FRAME POST (2 REQUIRED)
13	13-113M	PINION	39	39-300LD	HANDLE SIDE COVER SCREW (UPPER COVER) (2 REQUIRED)
14	14-113M	DOG SPRING (2 REQUIRED)	40	40-113HL	BEARING CUP ASSEMBLY
15	15-113M	DOG (2 REQUIRED)	54	54-113M	HARNES LUG (2 REQUIRED)
18	18-60	CLUTCH SPRING (2 REQUIRED)	55	55-114M	BALL BEARING
18A	18-113M	BEVELED WASHER	62	62-309	CLICK SPRING
19	19-113M	ECCENTRIC	63	63-30T	STUD SCREW
20	20-155	ECCENTRIC SPRING	63A	63-209	CLICK SPRING SCREW
21	21-113M	ECCENTRIC LEVER	69B	69B-600	RETAINING RING
22	22-99	ECCENTRIC SCREW	71A	71A-113M	SPINDLE BUSHING
23	23-114	HANDLE SCREW	86	86-113M	KEYED DRAG WASHER (4 REQUIRED)
24	24-113M	HANDLE ASSEMBLY	97	97-113M	GEAR SLEEVE STUD
26	26-113M	ECCENTRIC BUSHING	98	98-113M	GEAR SLEEVE
26A	26A-2.5FR	BALL BEARING	102	102-113	GEAR SLEEVE PIN
27	27-113M	NON-HANDLE SIDE PLATE	110	110-60	HANDLE LOCK SCREW
29	29-113M	SPOOL	149	149-45	ROD CLAMP NUT (2 REQUIRED)
30	30-16VS	STAND	149A	149-200	HEX NUT (2 REQUIRED)
31	31-16VS	STAND SCREW (4 REQUIRED)	154	154-80	SHIM
			183	183-113M	FRAME
			205	205-300T	GEAR STUD WASHER

NOTE: Many of [www.pennparts.com](http://www.pennparts.com) schematics include changes that were either made by Penn, or errors found and corrected by our parts dept.

SBT Ver. 092508 (BASED ON PENNS REV 1 6/6/08)