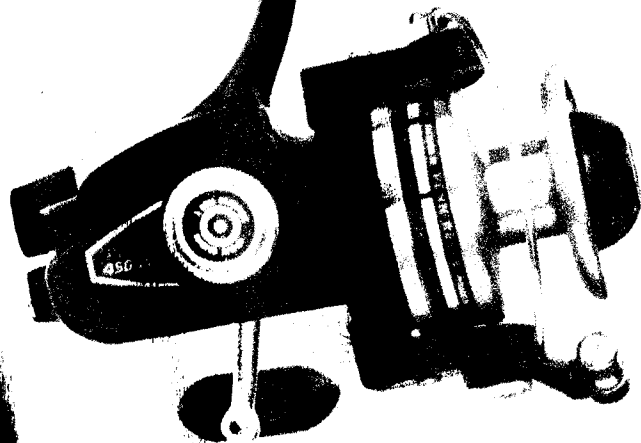


# Penn reels SERIES SS

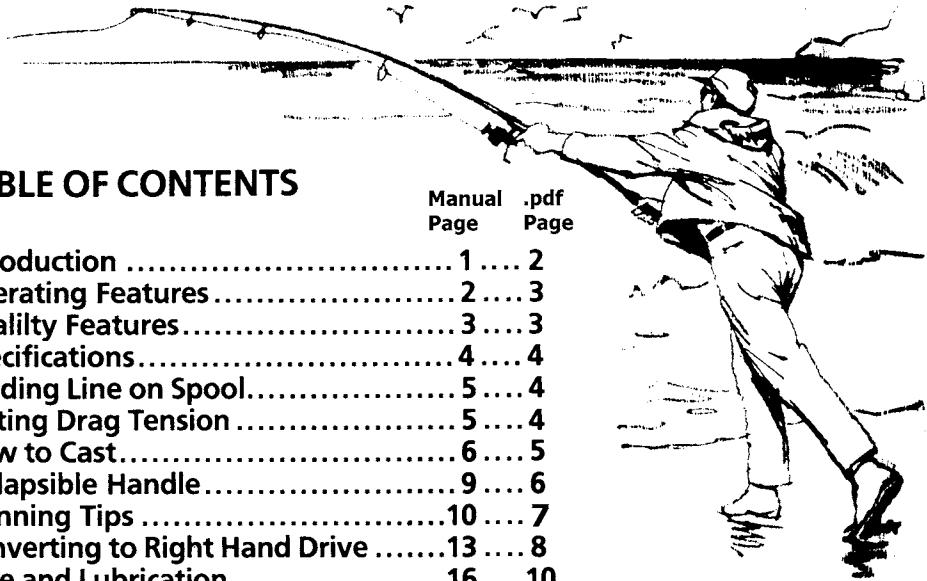


FEB 02 1994



Penn Fishing Tackle Mfg. Co.  
3028 W. Hunting Park Ave.  
Philadelphia, Pa. 19132  
(215) 229-9415 Fax: 1 (215) 223-3017

Made and Printed in U.S.A.  
10-91-100M-1



## TABLE OF CONTENTS

	Manual Page	.pdf Page
Introduction .....	1	2
Operating Features .....	2	3
Quality Features .....	3	3
Specifications .....	4	4
Loading Line on Spool .....	5	4
Setting Drag Tension .....	5	4
How to Cast .....	6	5
Collapsible Handle .....	9	6
Spinning Tips .....	10	7
Converting to Right Hand Drive .....	13	8
Care and Lubrication .....	16	10
Parts, Numbers, Exploded Views ..	18-29	11-16
How to Order Penn Reel Parts .....	30	17
Service Out of Warranty .....	31	18
Limited Warranty .....	31	18

## INTRODUCTION

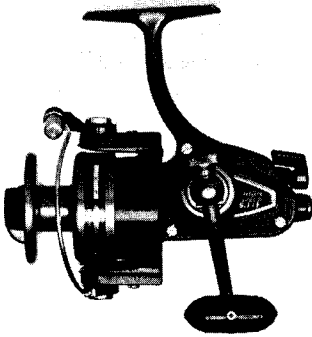
Congratulations on the purchase of your new Penn Spinfisher skirted spool spinning reel. Your Penn Spinfisher is built to last, because each reel we manufacture combines the finest grades of materials along with over 50 years of reel making experience. Each Penn reel is painstakingly built by master craftsmen with an attention to detail that's hard to find in today's modern, fast-paced world.

Your decision in choosing a Penn skirted spool Spinfisher reel is commendable, since many of today's fishermen prefer the skirted spool style. Not only does the skirt help prevent line from becoming entangled or fouled under the spool, but the skirt also helps protect the inner workings of the reel for trouble-free performance. Since the rotor housing is completely covered by the skirt, there is less friction on the line as it spirals off during a cast. And, Penn's skirted spools hold more line than other comparably-sized spinning reels.

The Spinfisher skirted spools also feature

a higher gear ratio for a fast retrieve, which comes in handy for jigging or serving lures to gamefish that like fast-moving prey. Top all of that off with popular operating and quality features, and you realize that a Penn skirted spool is the best-wrapped package for casting, jigging, light trolling and bottom fishing.

All of us here at Penn are proud of our Spinfisher line of skirted reels, and we are confident that your reel will perform well for many seasons to come. Good fishing!



**STAINLESS STEEL BAIL:** May be closed manually or automatically by turning handle forward. The 850SS, 750SS and 650SS feature an external trip, while the 5500SS, 4500SS, 4400SS, 430SS and 420SS feature an internal trip.

**DRAG KNOB:** Turn clockwise to increase drag. Turn counter-clockwise to decrease drag. The 850SS through 4400SS feature a

standard adjustable knob, while the 430SS and 420SS feature a push button knob to remove spool. For removal, push button with index finger, then pull spool with thumb and middle finger. For replacement, center and press spool down on shaft. Rotate slightly while pressing down to ensure proper seating. To remove 850SS through 4400SS spools, simply remove drag knob first by turning knob counter-clockwise. Then lift spool off shaft.

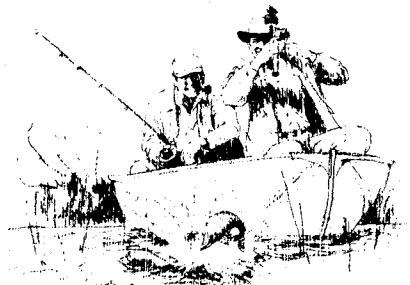
**ANTI-REVERSE:** To turn handle forward only or to turn handle both forward and backward. On 850SS, 750SS and 650SS, an additional lever is located under the rotor cup that permits a silent or click option while reel is in anti-reverse. On 5500SS through 420SS, anti-reverse is silent.

**COLLAPSIBLE HANDLE:** Handle collapses for storage and transportation. On 850SS through 4400SS, handle also converts to right hand drive. The 430SS and 420SS are not available in right hand drive.

## QUALITY FEATURES

- **SKIRTED SPOOLS:** Machined gold anodized aluminum, with handy line capacity chart.
- **BALL BEARINGS:** Shielded stainless steel ball bearings for easy reeling and top performance.
- **POWERFUL GEARS:** All main and pinion gears in the SS series are machined from the highest grade metals to withstand punishment that would tear ordinary reels up.
- **SMOOTH, DEPENDABLE DRAG SYSTEM:** Large friction washers in Penn's up front Power Drag dissipate heat fast and combine with the stainless steel metal washers for the smoothest, most durable drag system on the market. Easy to service, too!
- **LINE ROLLERS:** Stainless steel, hard chrome plated, with bushing underneath to ensure constant rolling for minimum line wear.

- **HOUSING AND ROTOR CUPS:** Housings, rotor cups and sideplates on 850SS, 750SS, 650SS, 430SS and 420SS are anodized die cast aluminum and feature a durable, baked enamel finish. Sideplates and bail arms on the 430SS and 420SS, as well as the housings, rotors and side plates on the 5500SS, 4500SS and 4400SS, are graphite composites for combination of lightest weight and strength.



MODEL	ACTION	LINE CAPACITY (YDS./MONO)	GEAR RATIO	WEIGHT (OZ.)	SPOOL DIA.
850SS	Heavy salt and fresh water	325/20	4.6-1	26	2 29/32"
750SS	Heavy salt and fresh water	250/20	4.6-1	25.5	2 21/32"
650SS	Medium heavy salt and fresh water	250/15	4.8-1	22	2 7/16"
5500SS	Medium salt and fresh water	275/12	5.1-1	14.25	2 5/32"
4500SS	Medium salt and fresh water	250/10	5.1-1	12.75	2 1/8"
4400SS	Medium salt and fresh water	200/10	5.1-1	12	2"
430SS	Light salt and fresh water	225/6	5.1-1	8.75	1 3/4"
420SS	Ultra light salt and fresh water	225/4	5.1-1	8	1 9/16"

## LOADING LINE ON SPOOL

Use only top quality monofilament fishing line. Although you may save some money buying cheaper monofilament, it will not perform to your satisfaction. And when your line starts to wear or get old, be sure to change it. The extra money you spend on new line will certainly be worthwhile.

Your local Penn dealer can fill your reel properly with the right line for your kind of fishing. If you want to wind the line on yourself, first mount the reel on your rod. Thread the line through at least one guide and open the bail. Then tie the line on the spool.

Have someone else hold the bottom of

the spool of line while you fill the reel spool as shown below. Either your partner or you should apply moderate tension for best results.

Be sure the line comes off the bulk spool in the same direction (rotation) as it goes on the reel spool. This procedure is most important to avoid twists and kinks. Usually the top label of the bulk spool facing the reel will put your line on in the right direction, but be sure to verify this before filling your reel's spool.

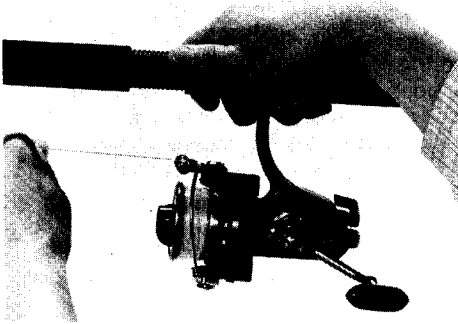
Depending upon line size and personal preference, the line on a properly filled spool will range 1/4 to 1/8 of an inch from the upper spool flange.

## SETTING DRAG TENSION

Turn drag knob clockwise to increase drag and counter-clockwise to decrease drag. Set drag tension well below breaking test of line. Drag should be set 1/3 to 1/4 of the line's breaking strength. For the most

precise settings, use a spring scale. A proper drag setting builds in a safety margin should you hook a large fish or snag. Better for your drag to slip than your line to break. Check tension occasionally by pulling line as

shown below. After a while, many fishermen can set the drag simply by "feel" as they pull line.



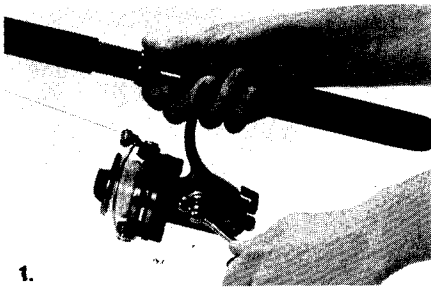
Between fishing trips, be sure to back the drag knob off all of the way. This will relieve the tension on the drag washers and allow them to dry better. Backing the drag knob off will also prevent the drag washers from sticking together, thus assuring a smooth drag.

Spare spools for different strength lines are available from your local Penn dealer or direct from Penn. When replacing the spool, be sure it is properly seated on the shaft. Spinning the spool on the shaft before replacing the drag knob on the 850SS through 4400SS will usually line up all of the drag washers, thus assuring proper seating.

## HOW TO CAST

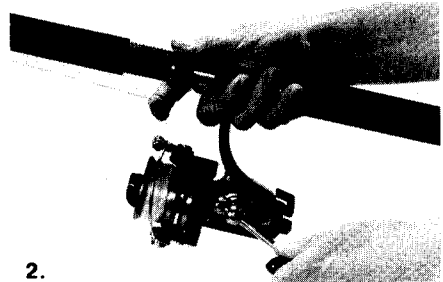
Spinning reels made casting relatively easy. Although your technique will improve with practice, the following basic steps should have you casting—and hopefully catching—in a reasonably short time.

1. Hold the rod in your right hand (if right handed) with the reel in a 9 o'clock position. Keep the stem of the reel between the third and fourth fingers. Wind your lure to within 2 to 4 inches of the rod tip.

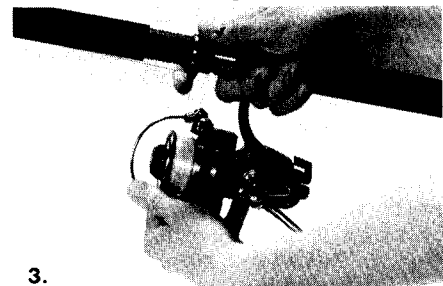


1. At the same time, position the roller guide directly below your index finger. Keeping your reel out of anti-reverse (so that you can turn handle both ways) will help in positioning both your lure and roller.

2. Pick the line up with your index finger of your right hand. Use the fleshy part on the first joint, since this part of the finger is the most sensitive.
3. Using your left hand, lift the bail over until it opens into the casting position. (On rods with long butts, your left hand

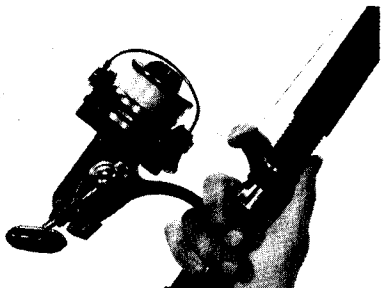


2. should now hold the bottom of the butt for additional leverage.)



3.

4.

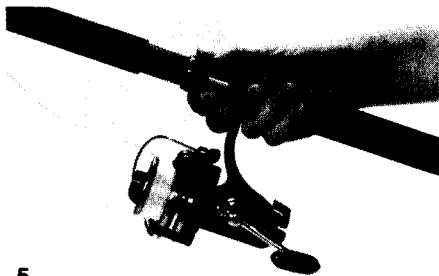


4. With your finger still holding the line and making sure the bail is open, swing the rod to a 2 o'clock position.

5. With a quick forearm action, swing the rod forward to a 10 o'clock position. At the instant you reach this position, release the line.

After you develop the feel of the rod, you will learn to "build" the rod with power while swinging it during the cast. Doing this will provide extra distance to your cast. Remember, if your lure is going too high during the cast, you are releasing

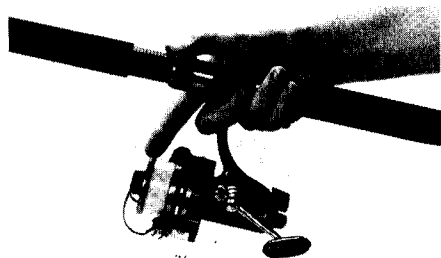
5.



the line too soon. Releasing the line too late will shorten your cast considerably. As your experience increases, you will learn the proper timing for a perfect cast.

During the cast, you may want to control distance by "feathering" the line. Place your right index finger against the spool and apply light pressure on the moving line. Feathering the line can help you place your lure more accurately.

When your lure hits the water, you can close the bail manually or, by turning the handle forward, close the bail automati-



cally. As you continue to turn the handle, the bail will retrieve your line.

Many anglers like to fish with the anti-re-

verse off, (so that the handle can turn both ways), and then switch to anti-reverse (so that the handle will turn forward only and retrieve line) after they have hooked into a fish.

Still other prefer to fish with the anti-reverse on all of the time. Your choice will be dictated by personal preference. Try fishing both ways and use the method that better suits you.

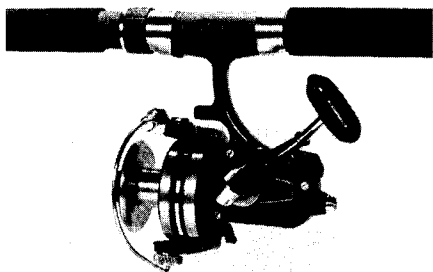
For those who prefer the simplicity of a manual pickup (no bail), Penn offers a manual conversion kit for 850SS through 5500SS.

## COLLAPSIBLE HANDLE

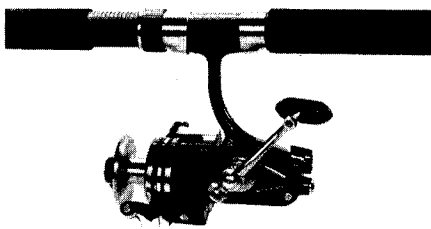
To collapse handles on the 850SS through 650SS, hold the rotor and turn handle backward (clockwise, if handle is facing you). Turn a few times to provide sufficient free movement to fold handle as shown. To set handle for fishing, again hold rotor and turn handle forward as if you are retrieving

line (counter-clockwise, if handle is facing you). The handle will tighten up into place.

To collapse handle on the 5500SS through 420SS, turn the gold knurled knob on the end of the handle shaft counter-clockwise until it stops. You will now be able to reverse position of handle. Screw down



knurled knob to retain handle in collapsed position as shown. Reverse procedure for



fishing, being sure to check knurled knob occasionally for tightness while fishing.

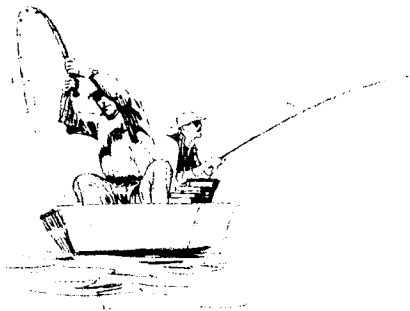
## SPINNING TIPS

- While fishing and retrieving lures, it is best to keep your rod in an upward position. Your rod will absorb the sudden power of a strike or snag and you will be ready to set the hook when ol' lunker head strikes.
- Be innovative while fishing. Don't be afraid or too lazy to try different lures,

bait, retrieves, etc. if you're not hooking up. Using your imagination, ingenuity and persistence often spells the difference between a day full of hookups and just a "nice day on the water."

- Most of the time you can set the hook in a fish's jaw with a firm upward sweep of the

rod. One or two sharp jabs usually does the trick, but don't overdo it, because you may actually start to wear a hole in the poor fish's jaw! It certainly doesn't do the

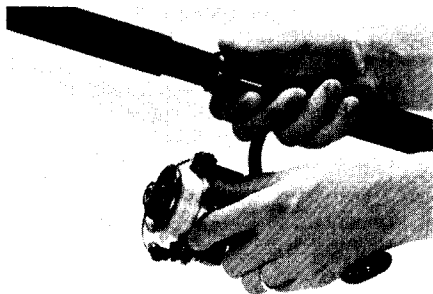


fish any good, and over-zealous hook-setting gives the fish a chance to throw the hook. And speaking of hooks, keep 'em sharp! More fish stories about "the one that got away" are started by dull hooks than by anything else. Sharp fishermen use sharp hooks.

- Always try to keep tension on the line when you have a fish on. A slack line will allow the fish another opportunity to throw the hook. Sometimes a smart fish, sensing that the jig is up, will "charge" you, and swim fast right toward you, attempting to get some slack line. Now's the time to put that high gear ratio to work and keep your line taut!
- When playing a fish, let the rod work for you. If the fish is taking line from the drag, keep your rod in an upward position. When bringing a fish in, "pump" the rod from a nearly vertical position down to a nearly horizontal position and back up again, cranking in the slack line only when you lower the rod.
- It is best not to adjust the drag on a big, running fish. Of course, if you suspect that your drag is too tight, causing too much strain on your tackle, loosen the drag knob by all means. But if you feel the drag is too loose, it is better to apply manual tension rather than to tighten the drag

knob and risk breaking your line.

You can apply manual drag tension a number of ways. For instance, you can palm the reel with your left hand, or you can place your finger on the spool, as shown in the illustration, to add more pressure. Use whatever method or combination of methods that suits you best.



- Keeping your spool full of line will increase casting distance. Line "slapping" the spool's upper flange as the line spirals off during a cast cuts distance, but that ef-

- fect can be minimized by a full spool. However, you should periodically check the "working" end of your line (the first 10 feet or so) to make sure there are no nicks, abrasions, etc., in the line. Don't hesitate to cut back if you find any.
- Sometimes, even under the best fishing conditions, your line will twist. Cut off all terminal tackle (including snaps, swivels, etc.) and troll just the line behind the boat. This will undo the twists. If you are shore bound, feed the line out into a current to straighten the line.
- Last of all, be a sportsman. Don't litter. Respect your fellow sportsmen. And while you don't always have to catch your limit, you should always limit your catch.

## CONVERTING TO RIGHT HAND DRIVE

13

Since the big advantage to spinning is casting, the angler's dominant hand should hold the rod. Most right handed people feel comfortable holding the rod with the right hand and reeling with the left hand.

For left handers, the procedure is reversed, and hence the reel must be converted to right hand drive. Incidentally, some right handers prefer right hand drive. The 850SS through 4400SS are convertible, so the choice is yours.

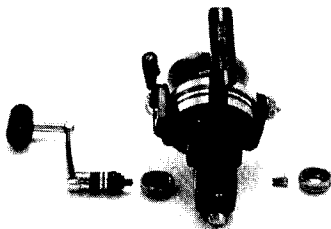
### 850SS THROUGH 650SS

Because most spin fishermen are used to retrieving with their left hand and controlling the rod with their right hand, the Penn 850SS, 750SS, 650SS are normally packed in a left hand drive as standard. However, if you would rather have a right hand drive, you may easily convert your reel by yourself in a few minutes. Just follow these steps:

- 1 Take off closed bearing cover and

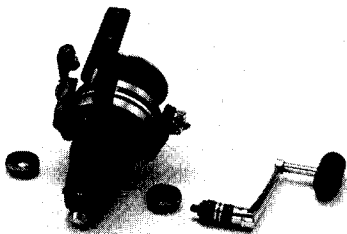
standard drive screw on the right side of the reel.

2. By turning the handle backward, remove it and unscrew the open bearing cover.



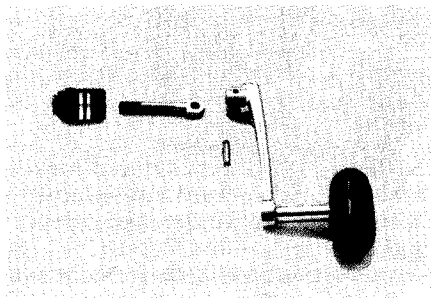
3. By loosening the pivot screw on handle, take off standard pivot and replace it with left-hand pivot provided in your reel box.
4. Screw closed bearing cover on the left side of the reel.





5. Screw open bearing cover on the right side of the reel.
6. Assemble handle (now with left hand pivot) on right side of reel by turning it as if you were winding in line while holding the rotor to prevent it from turning. The standard drive screw (9A) is not needed when reel is converted to right hand drive.

(Note: After conversion, you would have standard drive screw and the replaced pivot as loose parts. Save them for future use.)



### 5500SS, 4500SS, AND 4400SS

While holding rotor (Part 27) with right hand, turn handle backward (clockwise looking down at reel). Unscrew handle from reel. Remove bearing cover on left side (232-650) by turning counter-clockwise. (No need to do this on 4400SS.) Remove bearing cover on right side by turning counter-clockwise, as shown in illustration.



Screw on bearing cover that was on right side (233-650) on to left side. Then screw re-

maining bearing cover on right side, as shown in following illustration. (Not on 4400SS.)

Insert handle drive shaft in right side and carefully screw handle on to reel by turning handle forward (clockwise looking down at reel).

Hold rotor (Part 27) and tighten handle on to reel. Make sure handle is snug, but be careful not to over tighten.

NOTE: Models 430SS and 420SS are not convertible to right hand drive.

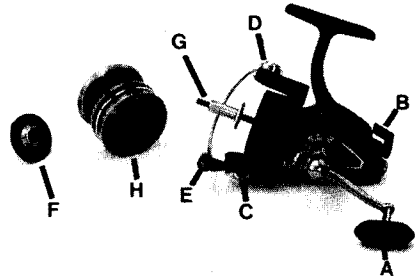


Your Penn reel will provide many seasons of dependable service, but like any precision instrument, it must be cared for to keep it operating in top-notch condition.

After each day of fishing, the reel should be cleaned. If you have been fishing in salt water, wash the reel with fresh water, preferably warm, until all salt deposits are washed away.

Be careful not to use such a driving force of water that salt particles will filter into the reel's internal mechanisms. Rather, use a flushing stream of water or very fine spray merely to dissolve salt water particles that have accumulated on the external parts of the reel.

Dry excess moisture from the reel and sparingly lubricate all areas. Many fishermen use a pressurized spray oil for quick and easy lubrication after washing their reel. Should any small amount of oil get on your line, it will do no harm if you wipe the excess off.

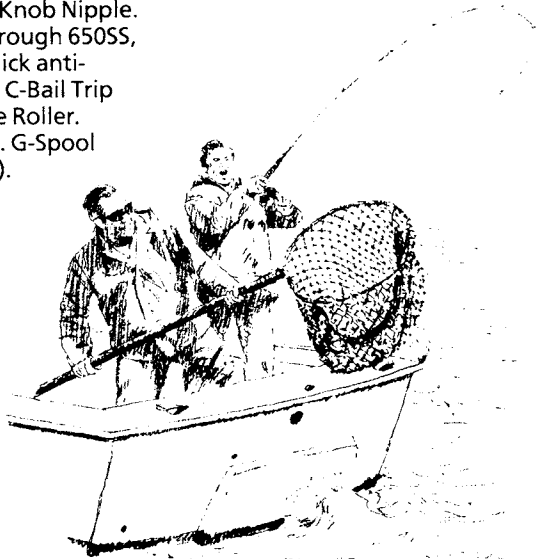


Frequently lubricate all frictional points. For best results, use Penn Reels lubricant.

Your reel should be stored in a cool, dry place. Do not store in a plastic bag, as the reel may develop condensation.

Periodically examine your reel and tighten loose screws and fittings. Depending upon use, your reel should be overhauled at least once every season.

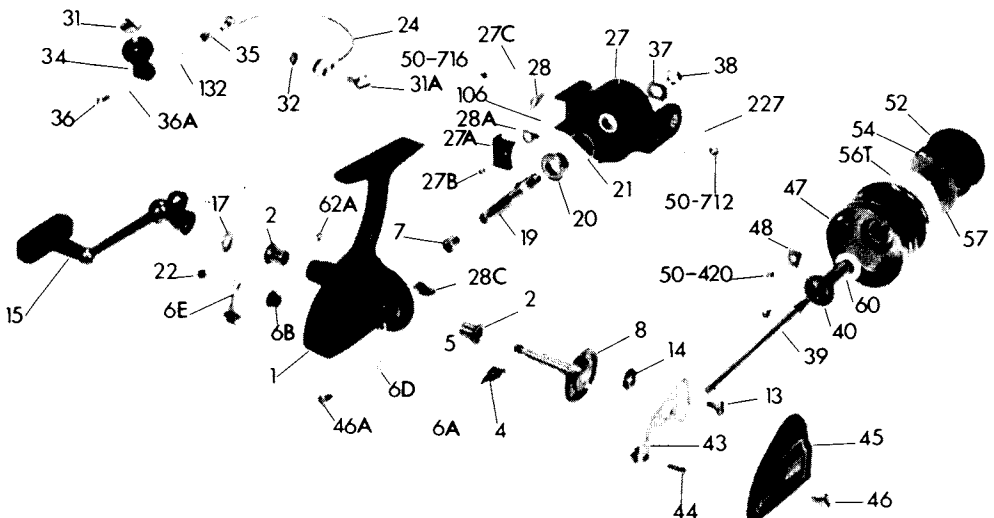
Major points are: A-Handle Knob Nipple. B-Eccentric Lever (On 850SS through 650SS, also lubricate optional silent/click anti-reverse lever under rotor cup). C-Bail Trip Cam. D-Bail Arm Screws. E-Line Roller. F-Inside Drag Knob (sparingly). G-Spool Shaft Top Assembly (sparingly). H-Spool Click Spring.



KEY NO.	PART NO.	DESCRIPTION	KEY NO.	PART NO.	DESCRIPTION	KEY NO.	PART NO.	DESCRIPTION
1	1-420	Housing with Bushings	27	27-430	Rotor Cup	46	46-716	Housing Cover Screw
1	1-430		27A	27A-420	Bail Trip Cover	46A	46A-704	Housing Plate Screw
2	2-420	Handle Shaft Bushings	27B	27B-420	Bail Trip Cover Screw	47	47-420	Spool Complete w/ Drag & Click
4	4-420	Dog	27C	27C-420	Trip Lever Cover			
6A	6A-716	Eccentric	28	28-420	Trip Lever	47	47-430	
6B	6B-704Z	Eccentric Liner	28A	28A-450	Cam Lever	48	48-420	Click Spring
6D	6D-716	Eccentric Spring	28C	28C-420	Trip Cam	48	48-430	
6E	6E-716	Eccentric Lever	31	31-420	Bail Arm Screw	50	50-420	Click Spring Screw
7	7-716	Pinion Bushing	31A	31A-420	Bail Cam Screw	50	50-712	Bail Spring Cover Screw
8	8-420	Main Gear Ratchet & Shaft	32	32-420	Bail Spring	50	50-716	Trip Lever Cover Screw
13	13-716	Crosswind Screw	34	34-420	Bail Arm	52	52-716Z	Drag Knob 420
14	14-716	Crosswind Roller	35	35-420	Line Roller	52	52-714Z	430
15	15-716Z	Handle Complete 420	36	36-750	Roller Screw	54	54-716	Drag Spring 420
15	15-714Z	430	36A	36A-750	Lock Washer	54	54-714	430
17	17-716	Handle Washer	37	37-420	Rotor Cup Washer	56T	56T-716	Drag Washer—Teflon 420
19	19-420	Pinion Gear	38	38-720	Rotor Cup Nut	56T	56T-714	430
20	20-722	Ball Bearing	39	39-420	Spool Shaft Complete	57	57-716	Metal Keyed Washer 420
21	21-722	Bearing Retainer	40	40-716	Spool Sleeve Complete	57	57-430	430
22	22-109	Eccentric Screw	43	43-716	Crosswind Arm	60	60-716	Rear Drag Washer
24	24-420	Bail Wire	44	44-716		62A	62A-716	Outer Screw
24	24-430		45	45-420	Crosswind Shaft Screw	106	106-450	Lever Spring
24	24-430		45	45-430	Gear Housing Cover	132	132-420	Roller Washer
27	27-420	Rotor Cup				227	227-420	Bail Spring Cover

**\*NOTE:** All parts are interchangeable between the 420SS and 430SS, except for the following parts: 1, 15, 24, 27, 45, 47, 48, 52, 54, 56T and 57. For parts 1, 24, 27, 45, 47, 48 and 57 use either the 420 or 430 suffix, depending on your model. For parts 15, 52, 54 and 56T, use the 716 suffix for the 420SS and the 714 suffix for the 430SS. Note that parts 15 and 52 carry a Z on their suffixes.

**420SS & 430SS**



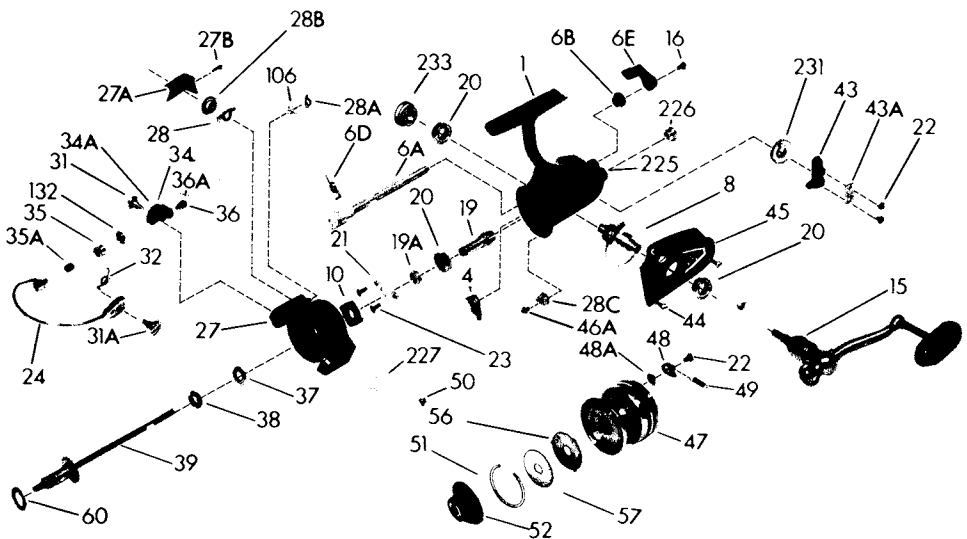
# PARTS LIST FOR 4400SS

20

KEY NO.	PART NO.	DESCRIPTION	KEY NO.	PART NO.	DESCRIPTION	KEY NO.	PART NO.	DESCRIPTION
1	1-4400	Housing	28	28-440	Trip Lever	45	45-4400	Housing Cover
4	4-450	Dog	28A	28A-440	Cam Lever	46A	46A-704	Trip Cam Screw
6A	6A-440	Eccentric	28B	28B-440	Trip Lever Bushing	47	47-4400	Spool (Complete)
6B	6B-750	Eccentric Liner	28C	28C-440	Trip Cam	48	48-450	Click Tongue
6D	6D-710	Eccentric Spring	31	31-550	Bail Arm Screw	48A	48A-750	Click Tongue Washer
6E	6E-750	Eccentric Lever	31A	31A-450	Trip Arm Screw	49	49-710	Click Tongue Spring
8	8-440	Main Gear	32	32-450	Bail Spring	50	50-712	Bail Spring Cover Screw
10	10-440	Ratchet	34	34-450	Bail Arm	51	51-440	Retaining Ring
15	15-440	Handle (Complete)	34A	34A-550	Bail Arm Bushing	52	52-440	Drag Knob
16	16-910	Eccentric Screw	35	35-704	Line Roller	56	56-440	Drag Washer
19	19-440	Pinion	35A	35A-704	Line Roller Bushing	57	57-440	Metal Slot Washer
19A	19A-550	Pinion Spacer	36	36-750	Bail Stud Screw	60	60-450	Thrust Washer (Teflon)
20	20-722	Ball Bearing	36A	36A-750	Lock Washer	106	106-450	Lever Spring
21	21-450	Bearing Cover	37	37-450	Rotor Washer	132	132-450	Roller Washer
22	22-750	Spool Click Screw	38	38-550	Rotor Nut	225	225-440	Crosswind Shaft Bushing
23	23-750	Bearing Cover Screw	39	39-440	Crosswind Shaft	226	226-450	Bushing Cap Cover
24	24-440	Bail Wire	43	43-440	Crosswind Block	227	227-440	Bail Spring Cover
27	27-4400	Rotor	43A	43A-440	Crosswind Block Plate	231	231-440	Crosswind Gear
27A	27A-440	Ball Trip Cover	44	44-704	Housing Cover Screw	233	233-440	Bearing Cover
27B	27B-420	Rotor End Screw						

21

## 4400SS



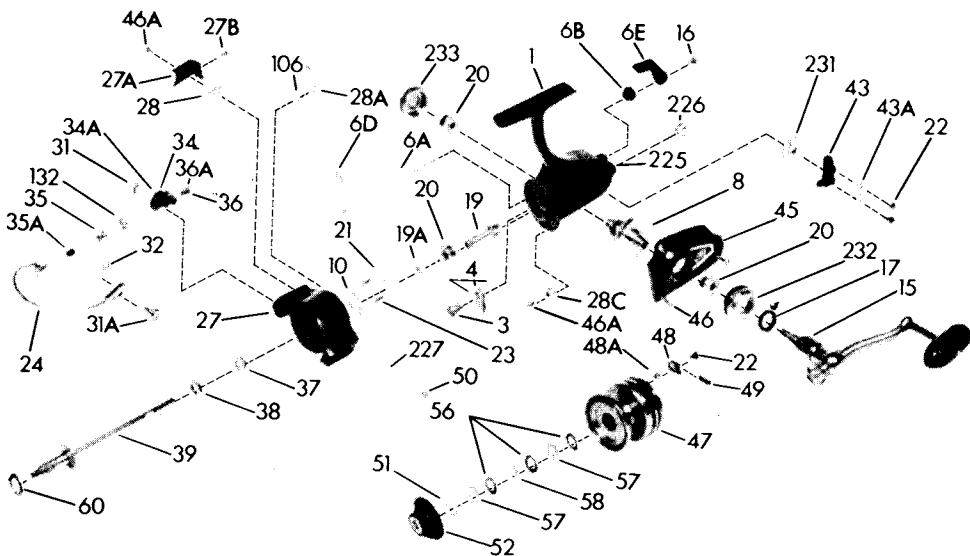
# PARTS LIST FOR 4500SS

22

KEY NO.	PART NO.	DESCRIPTION	KEY NO.	PART NO.	DESCRIPTION	KEY NO.	PART NO.	DESCRIPTION
1	1-4500	Housing	28	28-450	Trip Lever	46A	46A-704	Trip Cam Screw
4	4-450	Dog	28A	28A-440	Cam Lever	47	47-4500	Spool
6A	6A-450	Eccentric	28B	28B-5500	Trip Lever Bushing	48	48-450	Click Tongue
6B	6B-750	Eccentric Liner	28C	28C-440	Trip Cam	48A	48A-750	Click Tongue Washer
6D	6D-710	Eccentric Spring	31	31-550	Bail Arm Screw	49	49-710	Click Tongue Spring
6E	6E-750	Eccentric Lever	31A	31A-450	Trip Arm Screw	50	50-712	Bail Spring Cover Screw
8	8-5500	Main Gear	32	32-440	Bail Spring	51	51-710	Retaining Ring
10	10-440	Ratchet	34	34-450	Bail Arm	52	52-550	Drag Knob
15	15-5500	Handle (Complete)	34A	34A-550	Bail Arm Bushing	56	56-710	Drag Washer (HT-100)
16	16-910	Eccentric Screw	35	35-704	Line Roller	57	57-710	Metal Slot Washer
19	19-4500	Pinion	35A	35A-704	Line Roller Bushing	58	58-710	Metal Washer (Octagon)
19A	19A-550	Pinion Spacer	36	36-750	Bail Stud Screw	60	60-450	Thrust Washer
20	20-722	Bail Bearing	36A	36A-750	Lock Washer	106	106-550	Lever Spring
21	21-450	Bearing Cover	37	37-450	Rotor Washer	132	132-450	Roller Washer
22	22-750	Spool Click Screw (3)	38	38-550	Rotor Nut	225	225-5500	Crosswind Shaft Bushing
23	23-750	Bearing Cover Screw (2)	39	39-450	Crosswind Shaft	226	226-5500	Bushing Cap Cover
24	24-450	Bail Wire	43	43-550	Crosswind Block	227	227-440	Bail Spring Cover
27	27-4500	Rotor	43A	43A-550	Crosswind Block Plate	231	231-4500	Crosswind Gear
27A	27A-450	Bail Trip Cover	44	44-704	Cover Screw (4)	233	233-440	Bearing Cover
27B	27B-420	Rotor End Screw	45	45-5500	Housing Cover			

23

## 4500SS



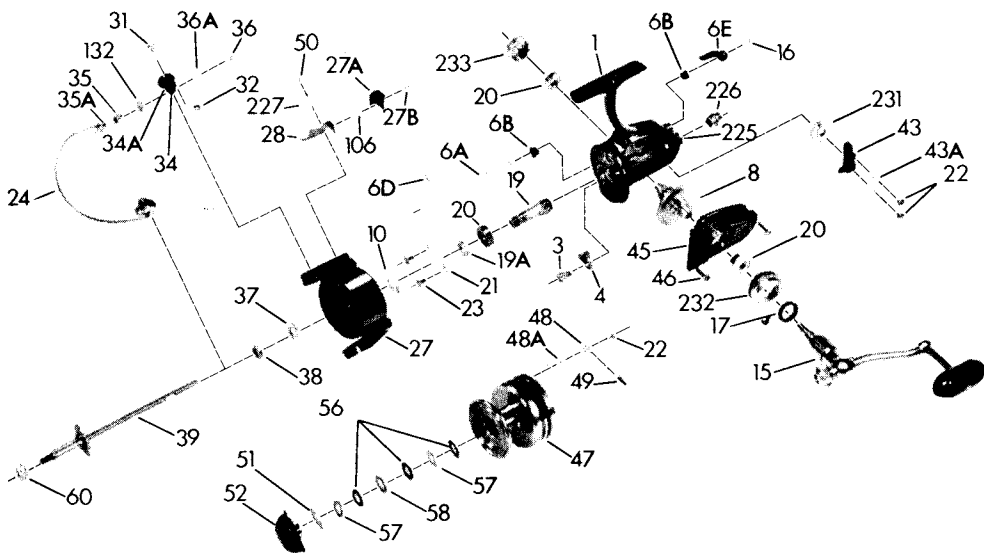
# PARTS LIST FOR 5500SS

24

KEY NO.	PART NO.	DESCRIPTION	KEY NO.	PART NO.	DESCRIPTION	KEY NO.	PART NO.	DESCRIPTION
1	1-5500	Housing	28	28-5500	Trip Lever	46A	46A-704	Trip Cam Screw
4	4-450	Dog	28A	28A-440	Cam Lever	47	47-5500	Spool
6A	6A-450	Eccentric	28B	28B-5500	Trip Lever Bushing	48	48-750	Click Tongue Washer
6B	6B-750	Eccentric Liner	28C	28C-440	Trip Cam	48A	48A-750	Click Tongue Washer
6D	6D-710	Eccentric Spring	31	31-550	Bail Arm Screw	49	49-710	Click Tongue Spring
6E	6E-750	Eccentric Lever	31A	31A-450	Trip Arm Screw	50	50-712	Bail Spring Cover Screw
8	8-5500	Main Gear	32	32-440	Bail Spring	51	51-710	Retaining Ring
10	10-440	Ratchet	34	34-450	Bail Arm	52	52-550	Drag Knob
15	15-5500	Handle (Complete)	34A	34A-550	Bail Arm Bushing	56	56-710	Drag Washer (HT-100)
16	16-910	Eccentric Screw	36	36-704	Line Roller	57	57-710	Metal Slot Washer
19	19-5500	Pinion	35A	35A-704	Line Roller Bushing	58	58-710	Metal Washer (Octagon)
19A	19A-550	Pinion Spacer	36	36-750	Bail Stud Screw	60	60-550	Thrust Washer
20	20-722	Ball Bearing	36A	36A-750	Lock Washer	106	106-5500	Lever Spring
21	21-450	Bearing Cover	37	37-450	Rotor Washer	132	132-450	Roller Washer
22	22-750	Spool Click Screw (3)	38	38-550	Rotor Nut	225	225-5500	Crosswind Shaft Bushing
23	23-750	Bearing Cover Screw (2)	39	39-550	Crosswind Shaft	226	226-5500	Bushing Cap Cover
24	24-5500	Bail Wire	43	43-550	Crosswind Block	227	227-440	Bail Spring Cover
27	27-5500	Rotor	43A	43A-550	Crosswind Block Plate	231	231-5500	Crosswind Gear
27A	27A-5500	Ball Trip Cover	44	44-704	Cover Screw (4)	233	233-440	Bearing Cover
27B	27B-420	Rotor End Screw	45	45-5500	Housing Cover			

25

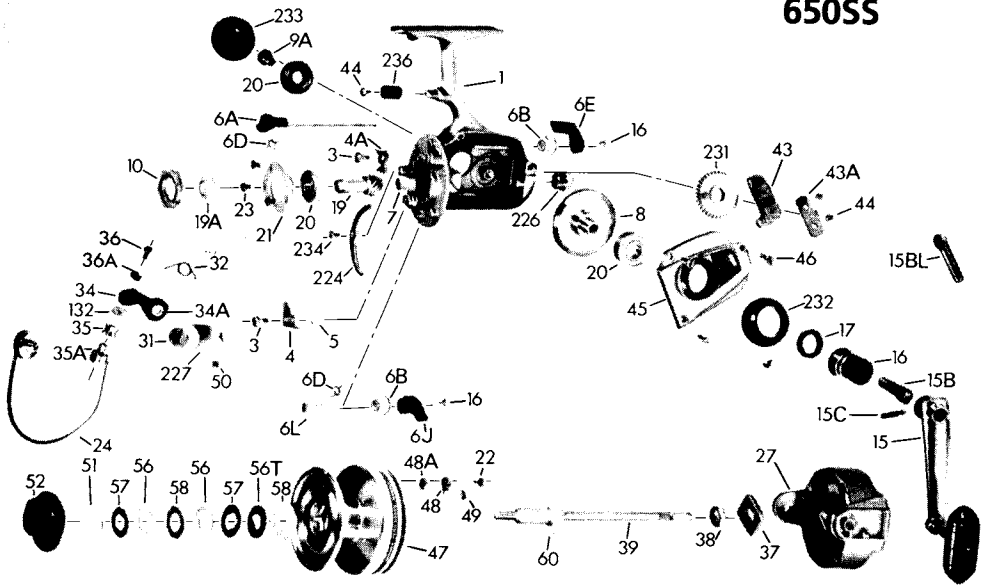
## 5500SS



# PARTS LIST FOR 650SS

KEY NO.	PART NO.	DESCRIPTION	KEY NO.	PART NO.	DESCRIPTION	KEY NO.	PART NO.	DESCRIPTION
1	1-650	Housing	19A	19A-650	Pinion Spacer	47	47-650	Spool-Complete
3	3-750	Dog Screw	20	20-700	Bearing	48	48-750	Click Tongue
4	4-650	Dog	20	20-722	Bearing	48A	48A-750	Click Tongue Washer
4A	4A-650	Silent Dog	21	21-750	Bearing Cover	49	49-710	Click Tongue Spring
5	5-704	Click Dog Spring	22	22-750	Trip Bumper Screw	50	50-712	Bail Spring Cover Screw
6A	6A-650	Upper Eccentric	23	23-750	Bearing Cover Screw	51	51-650	Retainer Ring
6B	6B-750	Upper Eccentric Liner	24	24-650	Bail Wire	52	52-650	Drag Knob
16	16-910	Eccentric Screw	27	27-650	Rotor	56T	56T-650	Drag Washer (Teflon)
6D	6D-710	Eccentric Spring	31	31-750	Bail Arm Screw	56	6-155	Drag Washer
6E	6E-750	Anti-reverse Lever	32	32-750	Bail Arm Spring	57	57-650	Drag Washer Keyed-Small Dia.
6J	6J-750	Silent Dog Lever	34	34-750	Bail Arm	58	58-650	Drag Washer Octagon
6L	6L-650	Silent Eccentric	34A	34A-750	Bail Arm Bushing	60	60-750	Thrust Washer
6B	6B-704Z	Silent Eccentric Liner	35	35-750	Line Roller	132	132-750	Roller Washer
8	8-650	Main Gear	35A	35A-704	Roller Sleeve	224	224-650	Transfer Lever
9A	9A-650	Standard Drive Screw	36	36-750	Bail Stud Screw	226	226-750	Bushing Cap Screw
10	10-650	Ratchet	36 A	36 A-750	Lock Washer	227	227-750	Bail Spring Cover
15	15-650	Handle	37	37-650	Rotor Washer	231	231-650	Transfer Gear
15B	15B-650	Standard Pivot	38	38-710	Rotor Nut	232	232-650	Bearing Cover-Open
15BL	15BL-650	Left Hand Pivot	39	39-650	Crosswind Shaft	233	233-650	Bearing Cover-Closed
15C	15C-650	Pivot Screw	43	43-750	Crosswind Block	234	234-750	Transfer Lever Screw
16	16-650	Collar	43A	43A-750	Crosswind Block Plate	236	236-750	Trip Bumper
17	17-650	Seal Washer	44	44-750	Housing Cover	225	225-750	Crosswind Shaft Bushing
19	19-650	Pinion	45	45-650	Housing Cover Screw	7	7-750	Pinion Bushing
			46	46-750	Housing Cover Screw			

## 650SS

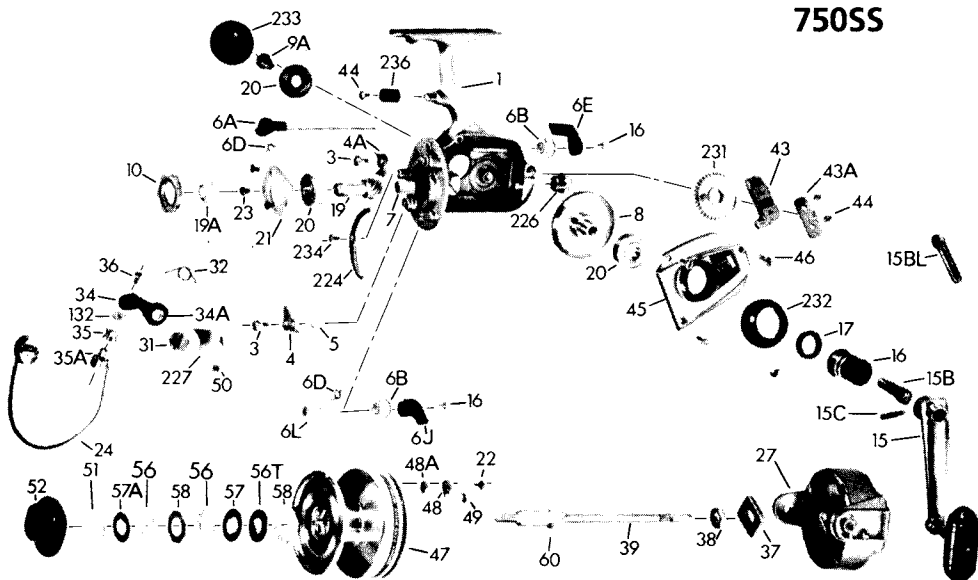


# PARTS LIST FOR 750SS AND 850SS

KEY NO.	DESCRIPTION	KEY NO.	PART NO.	DESCRIPTION	KEY NO.	PART NO.	DESCRIPTION
1	1-750 Housing	21	21-750	Bearing Cover	51	51-704	Retainer Ring
3	3-750 Dog Screw	22	22-750	Trip Bumper Screw	52	52-750	Drag Knob
4	4-750 Dog	23	23-750	Bearing Cover Screw	56	6-60	Drag Washer
4A	4A-750 Silent Dog	24	24-750	Bail Wire	57	57-704	Drag Washer Keyed-Small Dia.
5	5-704 Click Dog Spring	27	27-750	Rotor	57A	57A-750	Drag Washer Keyed-Large Dia.
6A	6A-750 Upper Eccentric	31	31-750	Bail Arm Screw	58	58-704	Drag Washer Octagon
6B	6B-750 Upper Eccentric Liner	32	32-750	Bail Arm Spring	60	60-750	Thrust Washer
16	16-910 Eccentric Screw	34	34-750	Bail Arm	132	132-750	Roller Washer
6D	6D-710 Eccentric Spring	34A	34A-750	Bail Arm Bushing	224	224-750	Transfer Lever
6E	6E-750 Anti-reverse Lever	35	35-750	Line Roller	226	226-750	Bushing Cap Screw
6J	6J-750 Silent Dog Lever	35A	35A-704	Roller Sleeve	227	227-750	Bail Spring Cover
6L	6L-750 Silent Eccentric	36	36-750	Bail Stud Screw	231	231-750	Crosswind Gear
6B	6B-704Z Silent Eccentric Liner	36A	36A-750	Lock Washer	232	232-750	Bearing Cover-Open
8	8-750 Main Gear	37	37-706	Rotor Washer	233	233-750	Bearing Cover-Closed
9A	9A-750 Standard Drive Screw	38	38-710	Rotor Nut	234	234-750	Transfer Lever Screw
10	10-750 Ratchet	39	39-750	Crosswind Shaft	236	236-750	Trip Bumper
15	15-750 Handle	43	43-750	Crosswind Block	225	225-750	Crosswind Shaft Bushing
15B	15B-850 Standard Pivot	43A	43A-750	Crosswind Block Plate	7	7-750	Pinon Bushing
15BL	15BL-850 Left Hand Pivot	44	44-750	Crosswind Block Screw	*47	47-850	Spool-complete with drag and click
15C	15C-750 Pivot Screw	45	45-750	Housing Cover	*27	27-850	Rotor Cup
16	16-850 Collar	46	46-750	Housing Cover Screw	*24	24-850	Bail Wire
17	17-750 Seal Washer	47	47-750	Spool-Complete			
19	19-750 Pinion	48	48-750	Click Tongue			
19A	19A-750 Pinion Spacer	48A	48A-750	Click Tongue Washer			
20	20-700 Bearing	49	49-710	Click Tongue Spring			
		50	50-712	Bail Spring Cover Screw			

Parts with (\*) are for the 850SS only. For all other 850SS parts, use the 750SS parts list.

## 750SS





1. Please, state the reel model for which you are buying parts and order parts by name and number.
2. Include your printed name, address and daytime telephone number with your order.
3. An invoice will be sent you showing part prices plus shipping and handling charges.
4. There is a minimum part order of \$2.00 and a shipping and handling charge of \$2.00 on a minimum order.
5. Upon receipt of your payment through check, money order or credit card only, your order will be shipped to you via parcel post or U.P.S.
6. If you prefer to use your credit card please state the name as it appears on the card, the account number, the expiration date and a daytime telephone number at which you can be reached.
7. An order may also be placed over the phone using a credit card as your payment method. If you wish to place an order in this way, call (215) 229-9415 and ask to be connected with the Parts Department.
8. For faster service, see your local Penn dealer. Check the telephone directory for the dealer nearest you.

### Penn Parts Dealer:

[www.PENNparts.com](http://www.PENNparts.com)



**Scott's Bait &  
Tackle**

**Penn Parts Dept.  
945 Radio Road  
Tuckerton NJ 08087  
(609) 296-1300**

**No Minimum Order!  
Plus, Parts in stock  
that Penn doesn't  
carry anymore.**

Penn Fishing Tackle Mfg. Co. warrants your reel to be free from defects in materials and workmanship for a period of one year from the date of purchase. This warranty does not cover damage or malfunctions caused by accident, abuse or normal expected wear. If your reel has a defect within the terms of the warranty, you should return it to us insured and we will repair or replace your reel, at our option, without further cost to you. If, however, we determine after inspection that the repair is not covered by the provisions of this warranty, the reel will be repaired and returned to you at a reasonable charge for labor, parts and return postage.

*All warranties which may be implied by operation of law including but not limited to warranties of merchantability and warranties of fitness for any particular purpose, shall be limited to one year from the date of purchase. In no event shall Penn Fishing Tackle Mfg. Co. be liable*

*for consequential or special damages for breach of this warranty or any other warranty which may be implied by law.*

*Some states do not allow limitations on how long an implied warranty lasts, and some states do not allow the exclusion of consequential or special damages, so the above limitation and/or exclusion may not apply to you.*

*This warranty gives you specific legal rights, and you may also have other rights which vary from state to state.*

---

PENN FISHING TACKLE MFG. CO.  
Factory Service Department  
3028 W. Hunting Park Avenue  
Philadelphia, PA 19132

PENN FISHING TACKLE MFG. CO.  
WESTERN WAREHOUSE  
354 W. Alondra Blvd.  
Gardena, CA 90248

PENN FISHING TACKLE MFG. CO. RESERVES  
THE RIGHT TO MAKE CHANGES IN PRICES  
OR SPECIFICATIONS WITHOUT NOTICE.

## SERVICE OUT OF WARRANTY

Your local Penn dealer can provide fast and convenient service for your Penn reel. You may also return it to Penn for service. Send it insured and include a short note with your reel stating the problem. To avoid errors, please print your name and address

clearly on the package and allow sufficient time for Penn to receive, service and return your reel. A reasonable charge will be made for parts, labor and return postage.

