

**YOU HAVE SELECTED THE BEST**  
**LEVELMATIC™**

**920 - 930 - 940**

**BAIT CASTING REEL**



*Truly the Reel of Champions*



**PENN FISHING TACKLE MFG. CO.**

**3028 W. Hunting Park Ave., Philadelphia, Pa. 19132 USA**

**CONGRATULATIONS** — You have selected the finest **Bait Casting Reel** made. Your Penn Levelmatic is made in the United States of America by the same craftsmen who produce the world famous Penn Senator and Penn International Reels. Every Penn is a precision built reel, made of the finest materials and expertly assembled by master craftsmen to meet the most demanding situations you encounter. However, it is essentially the performance of these outstanding instruments that make them the preferred reels of fishing champions throughout the world.

## LINE CAPACITY CHART

**CAPACITIES LISTED ARE APPROXIMATE  
BECAUSE OF LINE VARIATIONS**

REEL NO.	12 lb	5.5 Kg	15 lb	7. Kg	20 lb	9. Kg
920	175yd	160m	135yd	122m	120yd	100m
930 940	225yd	205m	185yd	170m	150yd	137m

REEL NO.	Weight		Ratio		Spool Width	
920	11 oz.	310g.	4 to 1	4 to 1	1.468	37mm
930 940	11½ oz.	331g.	4 to 1	4 to 1	1.812	46mm

### HANDLE (Stock)

REEL NO.	920	930	940
Handle	Counterbalanced	Counterbalanced	Power

## *You Are Invited*

### **TO SEND US PHOTOS OF FISH CATCHES MADE WITH PENN REELS . . .**

for possible use in the preparation of Penn Reel printed literature.

We will consider every clear reproducible photo regardless of form —

Black and white or Color  
Prints or Transparencies  
Sizes from 35 mm to 8" x 10"

Fishermen whose photos are used will receive a **FREE PENN REEL** suitable to their individual fishing requirements.

**To submit photos, please follow these simple rules:**

- 1—Be sure your photo shows the FISHERMAN, his CATCH and his PENN REEL tackle.
- 2—Be sure to give complete information—WHICH SPECIES, WEIGHT, WHERE, WHEN, WHAT MODEL PENN REEL.
- 3—Be sure to PRINT YOUR NAME AND COMPLETE ADDRESS.
- 4—Be sure to give us WRITTEN PERMISSION to print the photo if it is selected.

Send all photos to:

**PHOTO EDITOR: PENN REELS  
3028 W. HUNTING PARK AVE.  
PHILADELPHIA, PA. 19132 U.S.A.**

### **WHEN PENN REELS NEED SERVICE**

Your precision made Penn Reel will give you many years of satisfactory performance with reasonable care. However, should you wish to have your Penn Reel reconditioned, take it to your local Penn Reel dealer who displays the Penn Service Station identification decal. If you have mechanical aptitude you may service your reel yourself. Replacement parts and their individual costs with identifying numbers are listed in the instruction booklet packed with your reel. Order your replacement parts by parts number. Be sure to check the footnotes for possible parts changes. If local service is not available you may send your Penn Reel to our Factory Repair Department, Parcel Post insured. Attach a letter to the outside of the package stating what repairs are needed. We will service your reel, replace worn or broken parts, at reasonable cost.



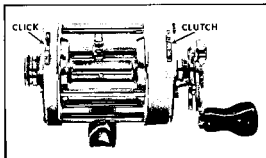
## **BAIT CASTING**

Bait casting originated in a small Kentucky town, and is one of the oldest angling methods. Bait casting is referred to as "Plug casting" because the lures generally used are called plugs. Plug casting is probably the most difficult form of casting to master because it involves educating your thumb to apply the exact pressure on the spool to regulate the casting distance. It is also, for those who are adept, the most accurate method of all.

As in spinning and spin-casting, the sweeping movement with the rod provides the propulsion needed to cast the line. The lure pulls line from the reel only as the spool revolves. However, at the completion of the cast, the angler retrieves his lure by turning the reel handle which revolves the spool. Generally speaking, ideal lure or bait weights for most bait-casting outfits are from 1/4 to 5/8 ounce. However, the Penn Levelmatic offers the use of light and heavier lures and baits. The new Levelmatic Spool Drag by Penn will prevent or minimize backlashes. If used properly, the Levelmatic will help the beginner fish like an experienced angler.

Keep your "Levelmatic" filled with line. Failure to do so is one of the biggest mistakes of plug and bait casters. A full spool doesn't have to revolve as many times or as fast to lay out a certain length of line.

## FREE SPOOL CLUTCH AND CLICK



### FREE SPOOL CLUTCH

For the ultimate in smoothness and casting distance Penn has introduced the "thumb flip" free spool clutch. This small lever attached in the right side plate (handle side) of your reel and extending out to the edge of the plate itself is the "free spool" lever. It enables you to "shift gears," to engage or disengage the spool. When disengaged, the spool can revolve and pay out line, as in casting, while the handle of the reel remains stationary. After completion of cast the instant you begin your retrieve the spool is re-engaged. It will retrieve line and permit the star drag to perform its function. There is no danger of stripping gears because these are always in mesh. Always shift to free spool for casting.

**NOTE:** An exclusive feature is the manual operation of this control — the clutch can be engaged on disengaged without turning the handle.

### CLICK RATCHET CONTROL

The click control is located on the left side plate. It acts as a signaling device, after you have cast your line, and placed your rod in its holder. It signals that the line is moving out from the reel while the rod is unattended.

To operate, push click lever forward with the free spool lever in "ON" position. Turning the reel handle forward will give a clicking sound. When a fish strikes, the warning sound will tell you to pick up the rod at once. To stop the warning sound, push the button back toward you.

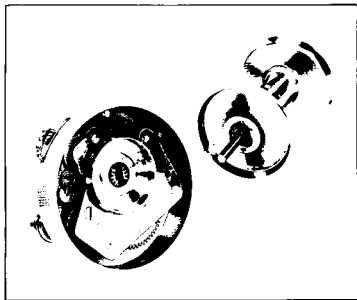
## THE STAR DRAG



The star drag is one of the key features of the Penn Reel. It enables an angler to tire out a game fish so that it may be boated with far less effort.

The star drag is controlled by a star wheel located under the handle on the right side plate of the reel. This device applies a frictional drag to the spool which may be adjusted to any desired pressure while playing a fighting fish. To properly set the drag before fishing, first flip the free spool lever to the "ON" position. The reel handle will now only revolve in the winding-in direction. Turn the star wheel counterclockwise (toward you) until the drag pressure on the spool is almost free. Test drag by pulling on line coming down from the reel spool. Turn the star wheel slowly forward (clockwise), testing the drag tension after each turn of the star wheel until you feel the drag is sufficient to bring in a small fish without slipping. Make sure the drag tension is less than the breaking strain of the line. When a small fish strikes and cannot take out line against the preset drag tension, just bring in the fish without adjustment to the star drag. However, when a fish starts to run and takes out line from the spool, you may turn the star wheel forward slowly until you set the drag tension at a point strong enough to slow down the fish. Be careful not to apply more tension than the breaking strength of your line. Always be sure to preset the drag to a medium tension after each catch.

## THE LEVELMATIC SPOOL DRAG



The centrifugal spool drag lets you cast with only one thing on your mind, hooking that big one. The centrifugal spool drag is always working for you, it lets you cast without fear of backlash.

The drag consists of opposing drag blocks which are allowed to slide on a pin attached to the spool spindle.

As the spool rotates the drag blocks are forced outward by centrifugal force until they contact the drum flange. The friction of the blocks against the stationary drum reduces the rotational speed of the spool and helps eliminate spool override that is the cause of backlash. As the speed of the spool decreases the frictional drag is reduced. The Levelmatic spool drag controls the speed of the spool during a cast and lets you cast backlash free.

## ADJUSTING LEFT SIDE BEARING CAP (MECHANICAL BRAKE CAST CONTROL)



The left side spool bearing cap is located at the center of the left side plate. It is adjustable so that excessive end play of the spool can be taken up by turning the cap clockwise.

The left side bearing cap contains plungers which exert a slight force on thrust washers within the reel and may be used to control the cast and prevent backlash. The control may be set as follows:

Place the reel on the rod and attach the casting plug in the conventional manner. Hold the rod at an angle with the tip above the horizontal and with the reel in free spool allow the lure to drop. Adjust the bearing cap so that the drag allows the lure to fall slowly by its own weight, but does not allow an overrun or backlash when the lure hits the floor.



## REMOVAL OF RIGHT SIDE PLATE

To remove right side plate, identify the three large screws that are knurled on the sides. These are the only screws that are necessary for the right side plate removal. These screws are slotted for easy removal by placing a coin in the slot and using the coin to remove the screw. Remove these screws **ONLY**, as these are the screws that hold the right side plate intact. Then remove the right side plate, being careful not to lose the drag blocks that are attached to the shaft on the spool.

Once the right side plate is removed, the working parts such as the gears, eccentric mechanism and spool spindle ends may be lubricated. Do not oil the "Levelmatic" drag blocks.

## HOW TO REMOVE LEVEL WIND WORM GEAR AND PAWL

*NOTE: The pawl may be replaced without removing level wind drive gear.*

1. Remove the right side plate. This is done by removing three large head screws which can be identified by the knurled edges, using a screwdriver or thin coin.
2. Pull the right side plate directly off the reel frame, making sure that this is done carefully over a table or something flat. Care must be taken not to drop the drag blocks that are attached to the spool. These are the two drag blocks that are used in the centrifugal drag system.
3. Carefully lift the right side ring from the frame posts.
4. At this point the complete level wind system, including the pawl and worm gear assembly, can be lifted directly out.
5. The screw that holds the pawl in place can also be removed by inserting a coin into the slot.
6. Place a drop of Penn Levelmatic Lube on each worm gear bearing. Replace level wind assembly being careful to align keyed locations.
7. Reverse procedures outlined above for assembling reel. After completion of assembly, place a few drops of oil on the worm and turn handle for full lubrication of worm gear system.

# DESCRIPTION OF PARTS

## PARTS LIST FOR 920, 930, 940 LEVELMATIC

PART NO.	DESCRIPTION	920	930	940
1	Right Side Plate .....	1-910	1-910	1-910
2N	Right Side Ring .....	2N-910	2N-910	2N-910
3	Bridge .....	3-910	3-910	3-910
4	Fiber Washer .....	4-910	4-910	4-910
5	Main Gear .....	5-910	5-910	5-910
6	Leather Drag Washer (3) .....	6-910	6-910	6-910
7	Metal Drag Washer Set (3) .....	7-910	7-910	7-910
8	Tension Washer .....	8-910	8-910	8-910
9	Spacer Sleeve .....	9-910	9-910	9-910
10	Star .....	10-910	10-910	10-910
11	Jack .....	11-910	11-910	11-910
13	Pinion .....	13-910	13-910	13-910
14C	Dog Spring .....	14C-910	14C-910	14C-910
15	Dog .....	15-910	15-910	15-910
15A	Dog Housing .....	15A-910	15A-910	15A-910
15C	Dog Housing Cover .....	15C-910	15C-910	15C-910
15D	Dog Housing Cover Screw .....	15D-910	15D-910	15D-910
16	Bridge Screw (8) .....	16-910	16-910	16-910
19	Eccentric .....	19-910	19-910	19-910
21A*	Lever Knob .....	21A-910	21A-910	21A-910
21B*	Lever Knob Pin .....	21B-910	21B-910	21B-910
23	Handle Screw .....	23-910	23-910	23-910
23A	Handle Lock Screw .....	23A-60	23A-60	23A-60
24	Handle .....	24-920	24-920	24-940
26B	Right Side Bearing Cap .....	26B-910	26B-910	26B-910
26C	Right Side Spool Positioner .....	26C-910	26C-910	26C-910
26D*	Right Side Bearing Retainer .....	26D-910	26D-910	26D-910
27	Left Side Plate .....	27-920	27-930	27-940
28N	Left Side Ring .....	28N-910	28N-910	28N-910
29L	Spool .....	29L-910	29L-930	29L-930
30N	Stand .....	30N-910	30N-930	30N-930
30A*	Right Side Stand Spacer .....	30A-910	30A-910	30A-910
30B*	Left Side Stand Spacer .....	30B-910	30B-910	30B-910
31N*	Right Side Stand Screw .....	31N-910	31N-910	31N-910
32*	Left Side Stand Screw .....	32-910	32-910	32-910

\*Not Shown

Prices subject to change without notice.

## DESCRIPTION OF PARTS

### PARTS LIST FOR 920, 930, 940 LEVELMATIC

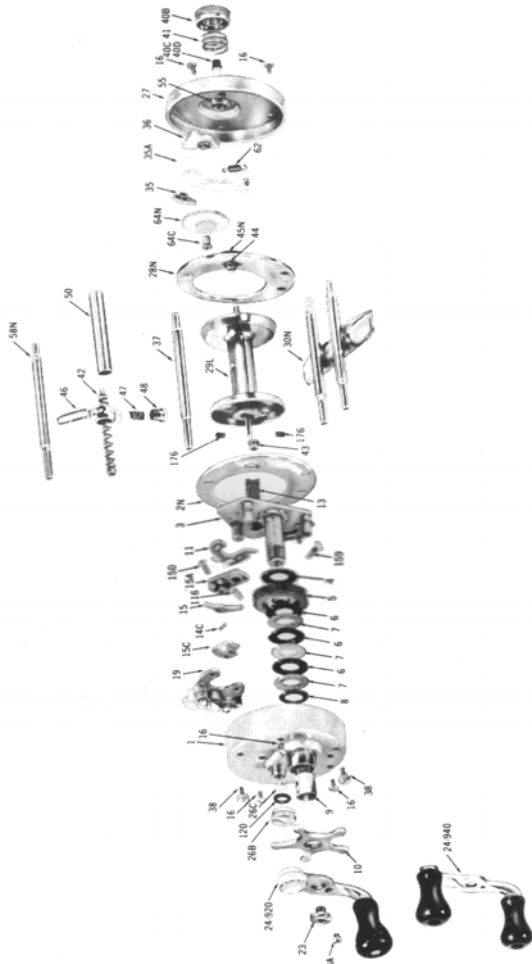
PART NO.	DESCRIPTION	920	930	940
35	Click Tongue .....	35-910	35-910	35-910
35A	Click Support Block .....	35A-910	35A-910	35A-910
36	Click Lever .....	36-910	36-910	36-910
37	Frame Post .....	37-910	37-930	37-930
38	Knurled Post Screw (2) .....	38-910	38-910	38-910
40B	Left Side Bearing Cap .....	40B-910	40B-910	40B-910
40C	Plastic Cast Control Bumper .....	40C-910	40C-910	40C-910
40D	Rubber Cast Control Bumper .....	40D-910	40D-910	40D-910
41	Left Side Bearing Spring .....	41-910	41-910	41-910
42	Worm .....	42-910	42-930	42-930
43	Right Side Worm Bearing .....	43-910	43-910	43-910
44	Left Side Worm Bearing .....	44-910	44-910	44-910
45N	Worm Gear .....	45N-910	45N-910	45N-910
46	Line Guide .....	46-910	46-910	46-910
47	Pawl .....	47-910	47-910	47-910
48	Pawl Cover Screw .....	48-109	48-109	48-109
50	Worm Shield.....	50-910	50-930	50-930
52*	Worm Gear Retaining Ring .....	52-910	52-910	52-910
55	Ball Bearing (2).....	55-910	55-910	55-910
58N	Slotted Line Guide Post .....	58N-910	58N-930	58N-930
58A*	Right Side Post Nut .....	58A-910	58A-910	58A-910
62	Click Spring .....	62-910	62-910	62-910
64B*	Idler Gear Bushing .....	64B-910	64B-910	64B-910
64C	Idler Gear Shaft .....	64C-910	64C-910	64C-910
64N	Idler Gear .....	64N-910	64N-910	64N-910
66N*	Drive Gear (On Spool) .....	66N-910	66N-910	66N-910
67*	Drive Gear Retaining Ring .....	67-9	67-9	67-9
69B*	Click Tongue Retaining Ring .....	69B-50	69B-50	69B-50
116	Dog Post .....	116-910	116-910	116-910
120	"O" Ring.....	120-910	120-910	120-910
159	Engaging Lever Spring.....	159-910	159-910	159-910
173*	Left Side Bearing Retainer .....	173-910	173-910	173-910
175*	Light Brake (2) .....	175-910	175-910	175-910
176	Medium Brake (2) .....	176-910	176-910	176-910
177*	Heavy Brake (2) .....	177-910	177-910	177-910

Prices subject to change without notice.

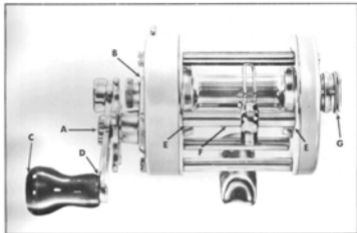
EXPLODED VIEW OF REEL

# PENN Levelmatic

920 - 930 - 940



## CLEANING AND LUBRICATING INSTRUCTIONS FOR PENN LEVELMATIC REEL



Penn Reels are engineered to provide for easy cleaning and servicing. They will give years of trouble free service if you follow this simple maintenance program:

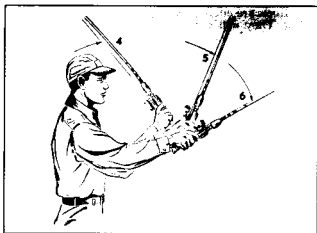
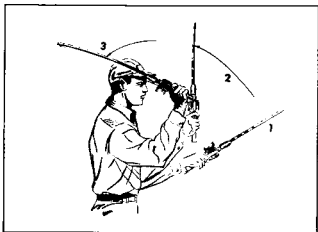
After each day of fishing the reel should be cleaned by using a wet cloth or sponge using fresh water, preferably warm. Dry the reel carefully and lubricate sparingly all areas. Do not oil the drag blocks of the centrifugal drag system.

Lubricate all frictional points indicated by arrows on the accompanying diagram. For best results use Penn Levelmatic lubricant.

Major points are: A — Handle screw nipple. B — Right side spool bearing. C — Handle knob nipples. D — Base of handle knob bushings. E — Level-wind worm bearing. F — Level-wind worm. G — Remove left end spool bearing and spring, lubricate and return.

For best results reel should be stored in a cloth bag. Do not store wet reels in a plastic bag as the bag will develop condensation.

## BASIC STEPS IN CASTING





## **BASIC STEPS IN CASTING**

**Bait casting or plug casting is an art that requires practice. The basic steps are illustrated in a simplified learning sequence.**

- 1.** In preparing to cast, place the thumb on the left side of the spool and move the lever forward on the right side of the reel, as this will disengage the spool. Point the rod towards the direction of intended cast with the reel handle facing upward. As you feel the weight of the casting object, start to pull back.
- 2.** Begin to lift rod with a free and easy lifting motion.
- 3.** Continue lifting rod to about the position of your ear, keeping the momentum of your lift constant.
- 4.** Begin to bring the rod forward, increasing power and thrust of arm.
- 5.** As your rod advances forward, start to extend your arm and at the same time release thumb pressure from the spool.
- 6.** As the bait is directed toward its target, keep the rod extended and pointing in the same direction.
- 7.** At this point extend your arm to increase distance and help eliminate drag on the line, keeping in mind the reel handle is still pointing upward.
- 8.** When the lure or bait makes contact with the water, bring your right elbow to a relaxed position at your right side as you transfer your rod to your left hand and free your right hand to turn the handle and engage the spool.
- 9.** Hold the rod in your left hand, grasping it securely as close to the reel as possible, as this will enhance your control of the rod while playing a fish.

## LIMITED WARRANTY

Penn Fishing Tackle Mfg. Co. warrants your reel to be free from defects in materials and workmanship for a period of one year from the date of purchase. This warranty does not cover damage or malfunctions caused by accident, abuse or normal expected wear. If your reel has a defect within the terms of the warranty, you should return it to us insured and we will repair or replace your reel, at our option, without further cost to you. If, however, we determine after inspection that the repair is not covered by the provisions of this warranty, the reel will be repaired and returned to you at a reasonable charge for labor, parts and return postage.

ALL WARRANTIES WHICH MAY BE IMPLIED BY OPERATION OF LAW INCLUDING BUT NOT LIMITED TO WARRANTIES OF MERCHANTABILITY AND WARRANTIES OF FITNESS FOR ANY PARTICULAR PURPOSE, SHALL BE LIMITED TO ONE YEAR FROM THE DATE OF PURCHASE. IN NO EVENT SHALL PENN FISHING TACKLE MFG. CO. BE LIABLE FOR CONSEQUENTIAL OR SPECIAL DAMAGES FOR BREACH OF THIS WARRANTY OR ANY OTHER WARRANTY WHICH MAY BE IMPLIED BY LAW.

SOME STATES DO NOT ALLOW LIMITATIONS ON HOW LONG AN IMPLIED WARRANTY LASTS, AND SOME STATES DO NOT ALLOW THE EXCLUSION OF CONSEQUENTIAL OR SPECIAL DAMAGES. SO THE ABOVE LIMITATION AND OR EXCLUSION MAY NOT APPLY TO YOU.

THIS WARRANTY GIVES YOU SPECIFIC LEGAL RIGHTS, AND YOU MAY ALSO HAVE OTHER RIGHTS WHICH VARY FROM STATE TO STATE.

## SERVICE OUT OF WARRANTY

For the fastest repair service and spare parts, we suggest you contact your local Penn dealer. You may also return your reel for factory service to either address listed below.

Send it insured and include a short note stating the problem. To avoid errors, make sure that your name and return address appear neatly and clearly on both your note and outside package. Allow three to eight weeks, depending on the volume of reels at Penn, for servicing. Avoid the spring rush by sending your reel in for service or repair during the fall or early winter. Penn will notify you that your reel has been serviced, providing a reasonable charge for parts, labor and return postage, or you can request MasterCard or Visa Payment. Please provide card type, name, account number and expiration date on card when requesting credit card payment.

## HOW TO ORDER PENN REEL PARTS

1. State reel model for which parts are intended.
2. Order parts by name and number.
3. An invoice will then be sent showing part prices plus shipping and handling charges.
4. Send in your remittance to receive your parts order (do not send cash).
5. For faster service we suggest you see a local dealer stocking Penn parts.
6. Minimum cost for factory parts order is \$2.00 (to us \$2.00 for processing). Minimum charge for MasterCard or Visa orders is \$4.00. MasterCard and Visa parts orders are accepted on telephone orders only.
7. For telephone parts orders, call Philadelphia at (215) 229-5415.

PENN FISHING TACKLE MFG. CO.  
Factory Service Department  
3028 W. Hunting Park Avenue  
Philadelphia, PA 19132

PENN FISHING TACKLE MFG. CO.  
Western Warehouse  
354 W. Alondra Blvd  
Gardena, CA 90248

PENN FISHING TACKLE MFG. CO. RESERVES THE RIGHT TO MAKE CHANGES IN PRICES OR SPECIFICATIONS WITHOUT NOTICE.