



622 ASM Adjustable Swivelmatic Base

INSTALLING THE 622 ADJUSTABLE SWIVEL BASE

Penn's 622 Adjustable Swivel-Matic® base locks into 36 different positions, allowing a complete, 360° circle of rotation on your Penn Fathom-Master® downrigger. With the 622, you can easily turn and lock your downrigger into a number of different deep trolling positions, and just as easily position your downrigger boom inboard for rigging, running or docking. Solid Penn engineering assures years of convenient, trouble-free downrigger fishing.

1. After selecting the location of the swivel base, check underneath the mounting surface to make sure that there is enough clearance for a backing plate and mounting hardware. Some types of boats may not provide easy access to this underside area. If this is your case, you can cut an access hole and install a cover over the hole. Check with your local marine supplier for details.

Note: For your convenience, Penn supplies the stainless steel mounting hardware, 4 screws (1/4" x 20) with stainless steel nuts and washers.

If the selected area on your boat is not suitable for through-bolting the base, consult with your marine supplier for other methods of installation (toggle bolts, lag bolts, oversize screws, etc.). Four through-bolts are best. If at all possible, try to use at least two through-bolts.

2. Use the swivel base cover (239-620) or the base plate (133-600) as a template to mark the holes to be drilled. Notice that the four marks form a rectangular pattern (not a perfect square). It does not matter which way the hole pattern is positioned on your boat in order for the 622 swivel base to operate correctly, since it swivels in a complete 360° circle. Make sure that the hole pattern is positioned so that you will have enough clearance to install the mounting hardware. When making your marks, be sure to hold the cover plate or base plate securely to keep it from shifting and to insure that your holes will be "on target".

3. Drill four 1/4" (6.35mm) holes in your selected location (if through-bolting all

four holes). For the most accurate installation, drill four smaller "pilot" holes before drilling your 1/4" holes.

4. A backing plate is recommended; for some makes of boats, it's a must. Use at least 1/2" (12.70mm) thick exterior grade plywood, pressure treated wood or other suitable material.

5. The 622 Adjustable Swivel Base comes already assembled. Note the oval-shaped hole on the swivel base top. The oval hole provides access to each of the four mounting screws.

The adjusting ring is toward the bottom of the swivel base. It has four finger grips (shark fins). First pick the base up, and insert the fingers of your left hand (if right handed) into the bottom of the swivel base. With your left thumb, push the adjusting ring counter-clockwise until you feel a positive stop (about 1"). With the adjusting ring in this position, you can now turn the swivel base top. You may hear and feel some soft clicks as you turn the swivel top, which is OK. Once the 622 is installed, you won't hear any clicks as you adjust the base (if you operate it properly). Turn the swivel top until the oval access hole is above a mounting screw hole. You should be able to peek right through the swivel base assembly. At this point, release the adjusting ring to lock the swivel base top in position.

Carefully match this mounting hole with the proper one of the four holes you just drilled. Be sure that your swivel base is positioned so that the rectangular pattern of the swivel base holes will match your drilled holes. Insert the first mounting screw through the swivel base and mounting surface.

6. To insert the next mounting screw, push the adjusting ring counter-clockwise until it stops, and holding that position, turn the swivel base top so that the oval access hole is over the next mounting screw hole. Again, you may hear and feel some soft clicks as you work the swivel top toward the next hole. Release the adjusting ring to lock the swivel base top in position. Drop another mounting screw through the base and mounting surface.

7. Repeat step 6 for inserting the third and fourth mounting screws. Just push

the adjusting ring counter-clockwise until it stops, and you should now be able to turn the swivel base top easily in either direction, without hearing or feeling any soft clicks. (This is because the first two screws have sufficiently anchored the bottom of the base.) After inserting all of the mounting screws, double check that the screws are properly seated into the swivel base.

8. Position the recommended backing plate underneath the mounting surface and install the washers and nuts on to the mounting screws. Tighten securely but do not over-tighten. For best results, tighten opposite screws as you go, similar to screwing lug nuts on a car tire.

9. Position the swivel base cover and base plate on top of the swivel base (make sure that the base plate nut is taped to the bottom side of the plate). Install the base plate mounting screws firmly, but do not over-tighten. Again, tighten opposite screws as you go, lug-nut style (See step 8).

Note: Penn supplies the four stainless steel base plate mounting screws.

10. The 622 Adjustable Swivel Base rotates to any one of 36 different positions, providing a full circle (360°) of rotation. To adjust, push one or more of the finger grips (shark fins) on the adjusting ring counterclockwise until it stops (about 1 inch). While holding the adjusting ring in this "adjust" position, turn the downrigger into the desired position. Release pressure on the adjusting ring, and the 622 will snap into that position. Remember, to turn and adjust the 622, you must first push the adjusting ring counterclockwise until it stops.

11. After fishing with the 622 Adjustable Swivel Base, you may want to change the base's drag tension (rotates too easily or too hard). Remove the base plate and swivel base cover, and adjust lock nut, using a 3/4" socket or box wrench. The lock nut is located in the center of the swivel base top.

12. Although there should be no need to disassemble the 622 Adjustable Swivel Base, except perhaps for occasional internal maintenance and lubrication, you should use the exploded view as a guide.

After removing the base plate and swivel base cover, remove the lock nut with a 3/4" socket or box wrench. Then lift off the entire swivel base top, locking ring, and adjusting ring. When removing the adjusting ring, be careful not to lose the two return springs.

During maintenance, make sure that all inside surfaces are clean and dry, then thoroughly lubricate the brass shaft in the center of the swivel base bottom with waterproof grease. Clean the two return springs and lubricate with a light oil.

In order to re-assemble the 622, begin by installing the (2) return springs into the (2) longer pockets, which are located opposite each other on the swivel base bottom.

Next, locate the small circular indentations on the swivel base bottom and adjusting ring. Line these indentations up, and carefully lower the adjusting ring onto the swivel base bottom. While applying downward pressure, slowly rotate the adjusting ring clockwise until it drops fully into position. Check to be sure that the cam followers (raised bumps) on the adjusting ring are lined up with the vertical channels on the swivel base bottom.

Next, slide the serrated locking ring onto the swivel base bottom. Position is not important, as long as the teeth point up.

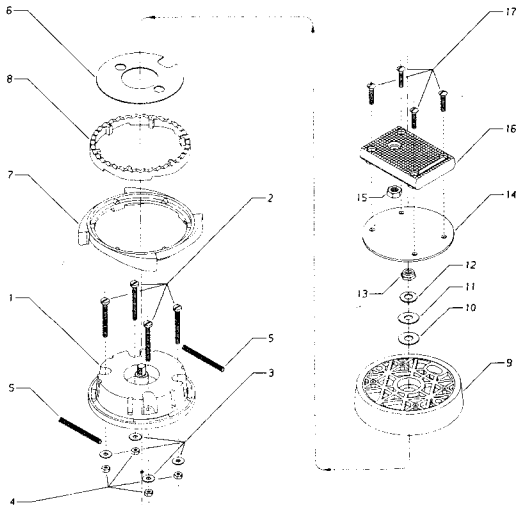
Look inside the swivel base top and make sure that the large white plastic washer is snapped in place. The notch on the washer should be lined up with the oval

access hole on the swivel base top.

Carefully place the swivel base top onto the brass shaft, and secure with the lock nut and hardware. (Use the exploded view as a guide for correct installation of lock nut hardware.) Check that the 622 Adjustable Base is operating properly by pushing the adjustable ring counter-clockwise until reaching a positive stop. Holding that position, the swivel base top should rotate easily and quietly. Release the adjusting ring to return it to the locked position.

Before re-installing the swivel base cover and base plate, coat the base mounting screw threads and base plate nut threads with waterproof grease. When re-installing hardware, secure tightly, but be sure not to over tighten.

PARTS & ASSEMBLY GUIDE



KEY NO.	DESCRIPTION	PART NO.
1	Swivel Base Bottom	238-622
2	Swivel Base Mounting Screw (4)	250-620
3	Mounting Screw Washer (4)	220-600
4	Mounting Screw Nut (4)	211-600
5	Return Spring (2)	14-622
6	Swivel Base Washer	240-622
7	Adjusting Ring	238A-622
8	Locking Ring	237A-622
9	Swivel Base Top	237-622

KEY NO.	DESCRIPTION	PART NO.
10	Swivel Drag Washer	249-620
11	Metal Drag Washer	241-620
12	Tension Washer	18-970
13	Lock Nut	23-130
14	Swivel Base Cover	239-620
15	Base Plate Nut	193-600
16	Base Plate	133-600
17	Base Plate Mounting Screw (4)	209-620

Assembly hint from staff at www.pennparts.com

For the 622ASM swivelmatic base

When mounting unit to boat, to get plastic spacer to follow top plate: take 1 #209-620 screw and install the screw until it bottoms out. Back off $\frac{1}{4}$ turn until it drags washer with it on turning.

Also included – photo copy of bottom pattern not included in original equipment to aide with placement of the mount on the boat.