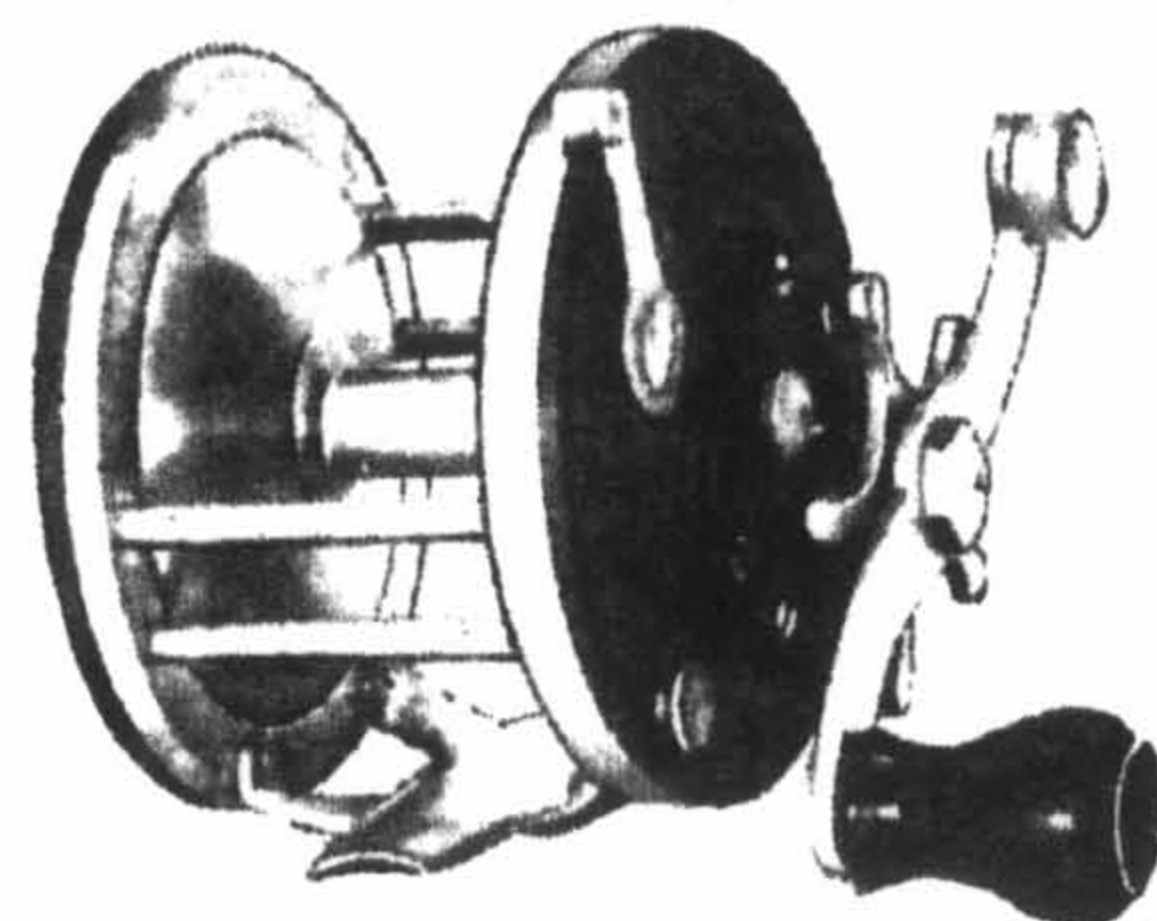


# *PENN* Fishing Reels



*Mfrs. of* FINE SALT WATER  
FISHING REELS

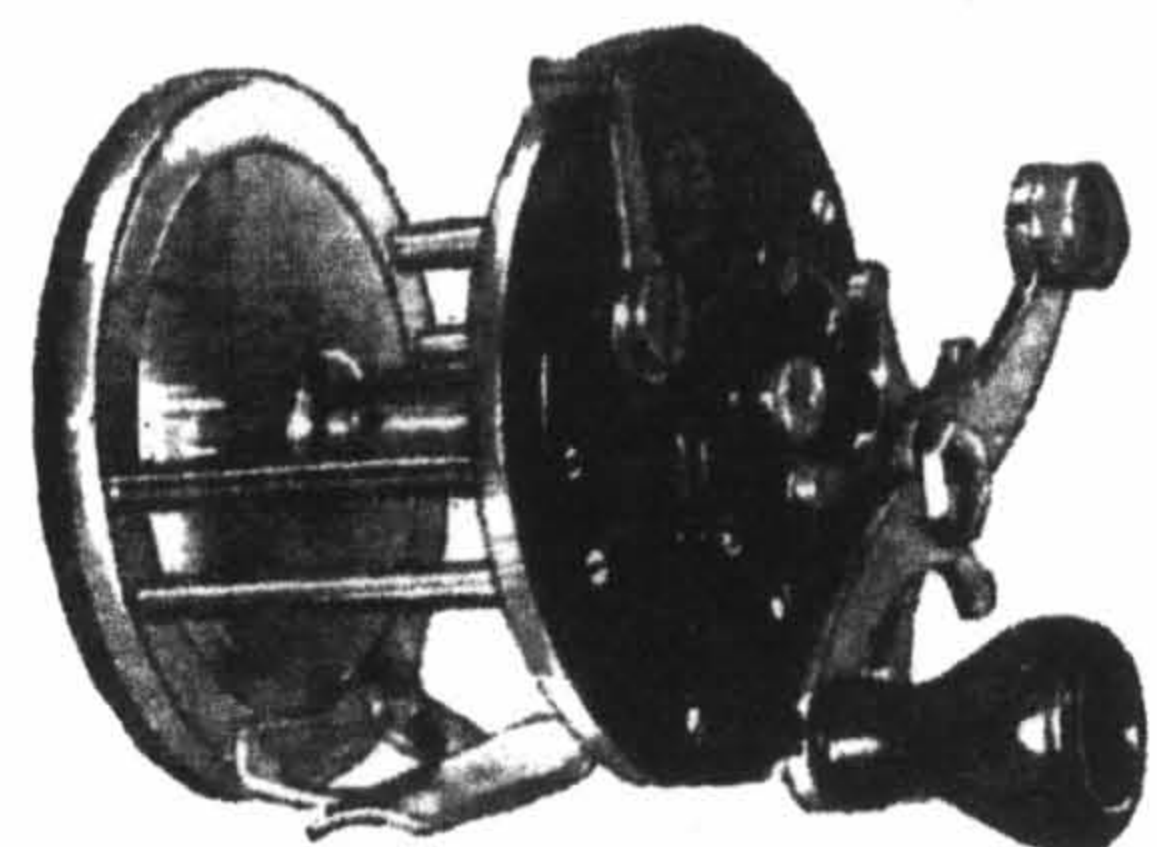
PENN FISHING TACKLE MFG CO.  
159 W. LEHIGH AVE.  
PHILADELPHIA, PA.



CORONADO

High grade reel combines all the requirements to give perfect results in fishing. Made of German silver, highly polished and chromium-plated. Easy take apart feature. Smooth acting drag. Patented free spool clutch, gears are constantly in mesh. Gear ratio,  $2\frac{1}{2}$  to 1 on 300 yd. and 250 yd. models, triple multiplying on 150 yd. and 100 yd. models. Patented waterproof ball oilers.

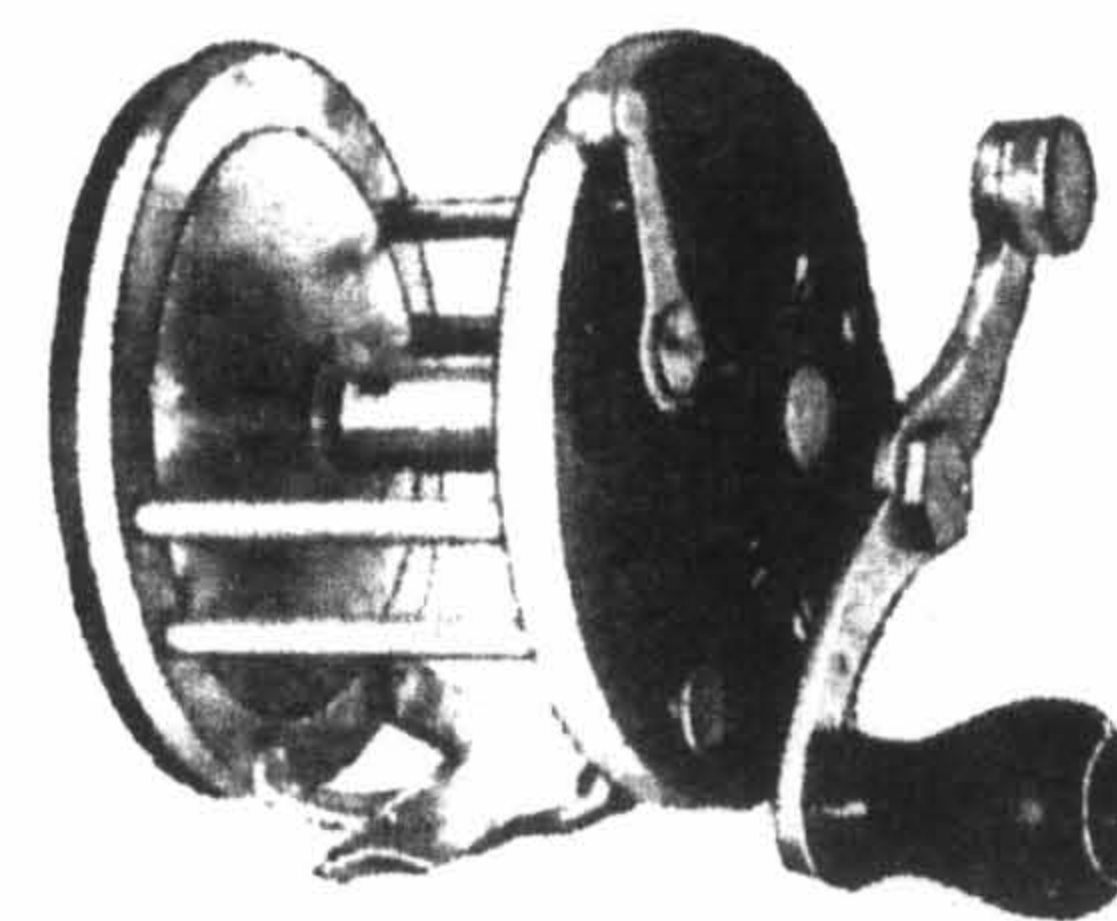
No. 91—100 yd.  
Price \$8.00  
No. 92—150 yd.  
Price \$8.50  
No. 90—250 yd.  
Price \$9.00  
No. 95—300 yd.  
Price \$9.50



LONG BEACH

Star drag reel of high standard and finished in polished chromium. Smooth acting drag, adjustable to a very fine degree. Patented free spool clutch with gears always in mesh. Gear ratio,  $2\frac{1}{2}$  to 1 on 300 yd. and 250 yd. models, triple multiplying on 150 yd. and 100 yd. models. Patented oiling system provides for oiling of all parts, including drag, from the outside.

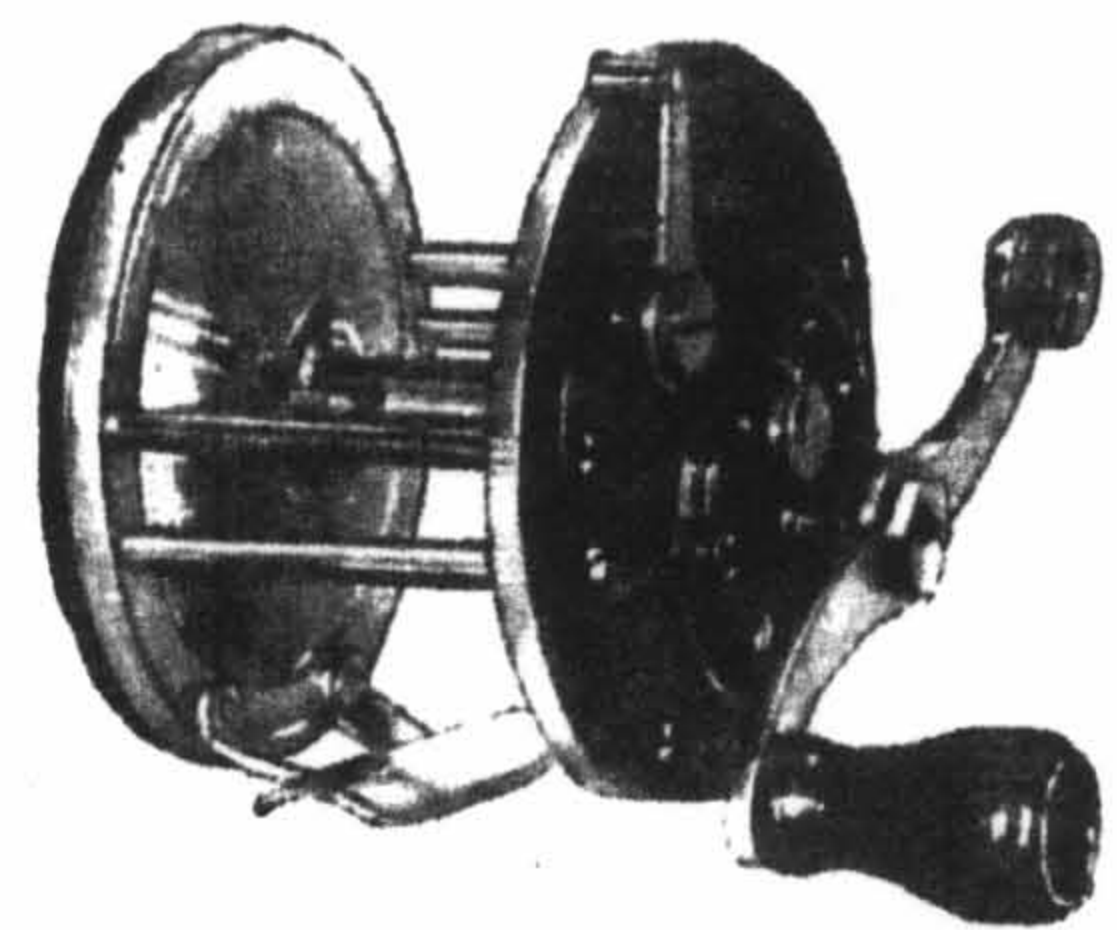
No. 61—100 yd.  
Price \$5.50  
No. 62—150 yd.  
Price \$5.75  
No. 60—250 yd.  
Price \$6.25  
No. 65—300 yd.  
Price \$6.75



OCEAN SIDE

Free spool take apart surf casting reel with double side pillars and open top for distant casting. Made of German silver, highly polished and chromium-plated. Easy to take apart. Free running spool with gears constantly in mesh. Gear ratio,  $2\frac{1}{2}$  to 1 on 300 yd. and 250 yd. models, triple multiplying on 150 yd. and 100 yd. models. Patented sand-proof ball oilers.

No. 81—100 yd.  
Price \$6.75  
No. 82—150 yd.  
Price \$7.00  
No. 80—250 yd.  
Price \$7.50  
No. 85—300 yd.  
Price \$8.00

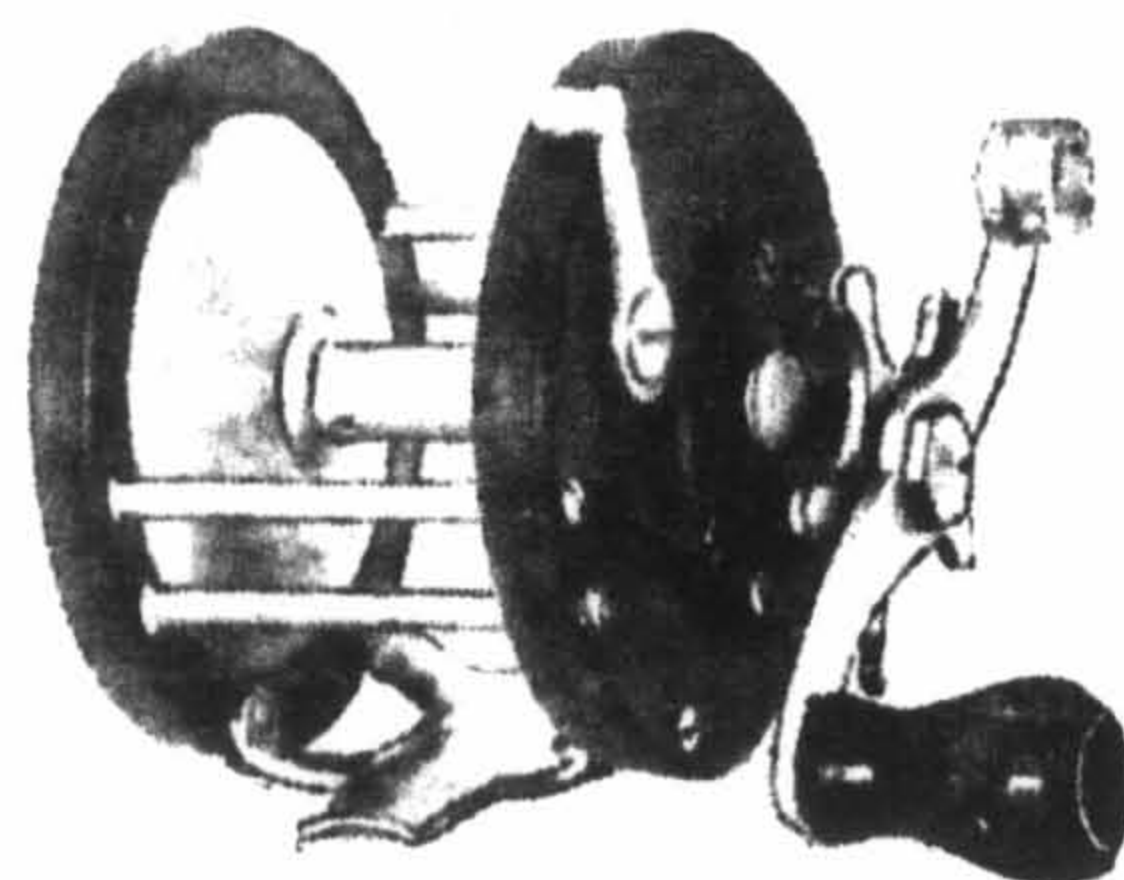


BAY SIDE

Free spool casting reel of high quality finished in polished chromium. Double side pillars with open top for distant casting. Free spool lever on rim operates clutch with gears constantly in mesh. Gear ratio,  $2\frac{1}{2}$  to 1 on 300 yd. and 250 yd. models, triple multiplying on 150 yd. and 100 yd. models. Patented sandproof oilcaps provide for oiling from the outside.

No. 51—100 yd.  
Price \$4.25  
No. 52—150 yd.  
Price \$4.50  
No. 50—250 yd.  
Price \$4.75  
No. 55—300 yd.  
Price \$5.00

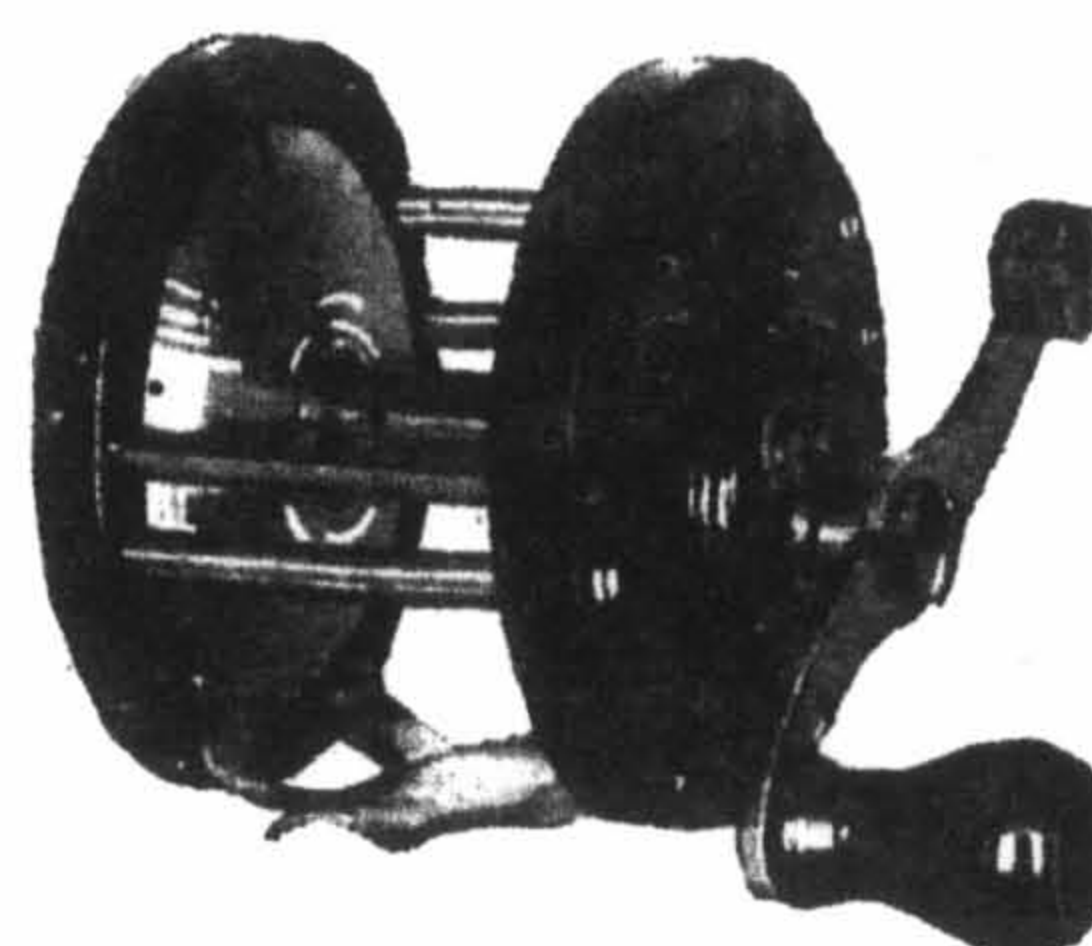




### BRIDGE CITY

Star drag reel of strong construction with open top. Made of brass heavily nickel-plated and hand polished. Smooth working drag, adjustable by star wheel on handle. Patented free spool clutch with gears always in mesh. Gear ratio,  $2\frac{1}{2}$  to 1 on 300 yd. and 250 yd. models, triple multiplying on 150 yd. and 100 yd. models. All working parts, including drag, can be oiled from the outside.

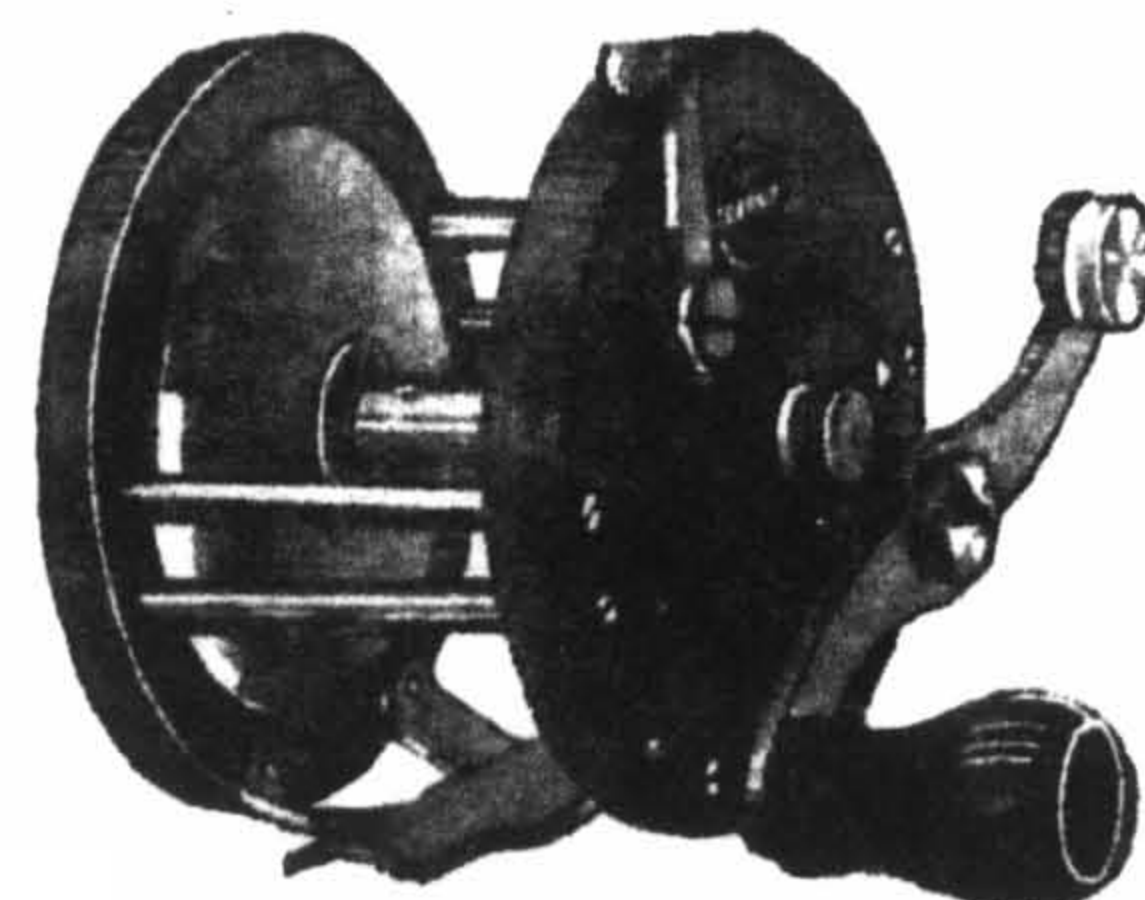
No. 101—100 yd.  
Price \$4.50  
No. 102—150 yd.  
Price \$4.75  
No. 100—250 yd.  
Price \$5.00  
No. 105—300 yd.  
Price \$5.25



### SEA HAWK

Free spool reel of sturdy construction. Made of brass finished in nickel and hand polished. Patented free spool handle control, operated by pulling out handle for free spool and pushing in handle to re-engage gears. Spiral generated gear avoiding possibility of slipping out of mesh. Equipped with our patented waterproof oilcaps.

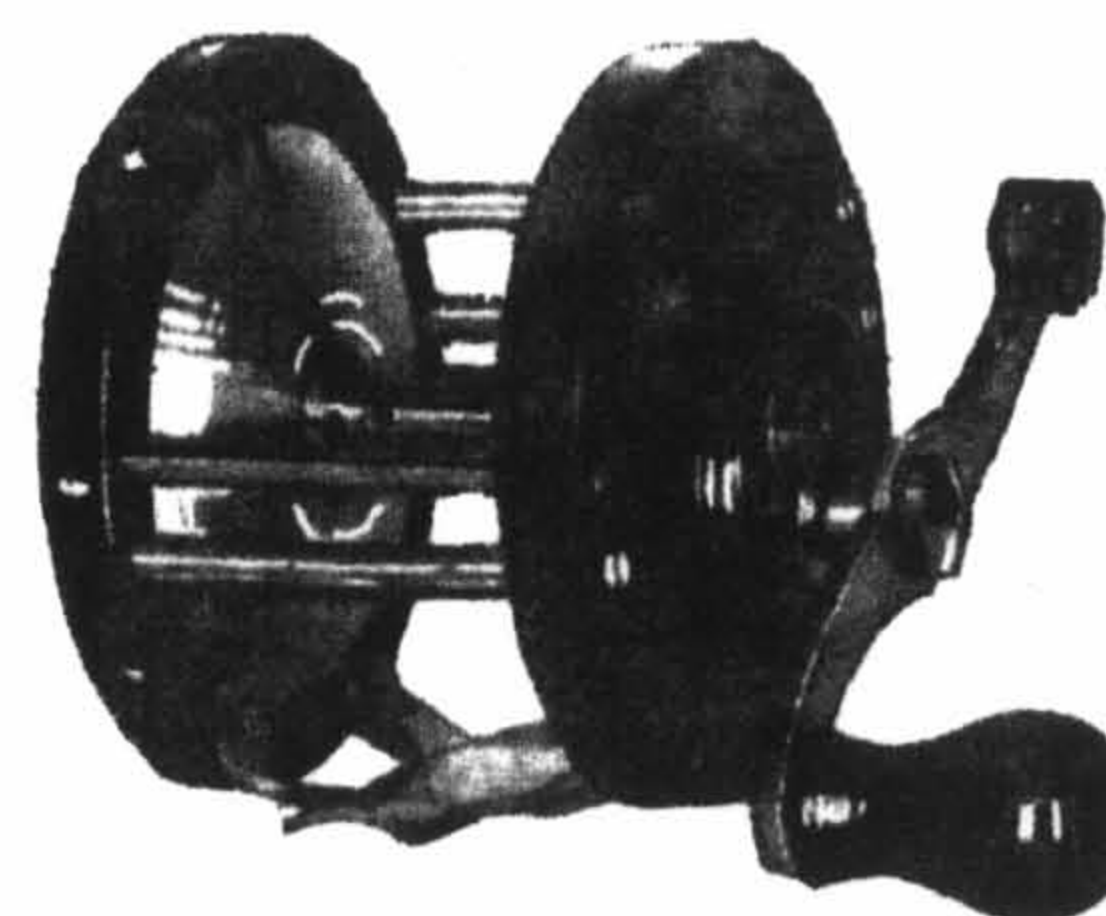
No. 42—150 yd.  
Price \$2.75  
No. 40—250 yd.  
Price \$3.00  
No. 45—300 yd.  
Price \$3.25



### SEA FORD

Free spool surf casting reel with double side pillars and open top, finished in nickel and hand polished. Patented free spool clutch with gears always in mesh and operated by spring pressed lever on rim. Patented oilcaps provide for oiling of working parts from the outside without removing any parts. Gear ratio,  $2\frac{1}{2}$  to 1 on 300 yd. and 250 yd. models, triple multiplying on 150 yd. and 100 yd. models.

No. 71—100 yd.  
Price \$2.75  
No. 72—150 yd.  
Price \$3.00  
No. 70—250 yd.  
Price \$3.25  
No. 75—300 yd.  
Price \$3.50



### NEW PORT

Serviceable salt water reel of strong construction to withstand hardest usage. Made of brass finished in nickel and hand polished. Double side pillars with open top. Double multiplying phosphor bronze gears. Genuine bakelite end plates. Adjustable click. Patented waterproof oilcaps provide for oiling of working parts from the outside.

No. 32—150 yd.  
Price \$2.25  
No. 30—250 yd.  
Price \$2.50  
No. 35—300 yd.  
Price \$2.75

Penn Fishing Reels are built to fulfill perfectly the requirements of the angler. The quality, design, finish and usefulness is incomparable. These reels are of light weight, yet of such strong construction as to withstand hardest usage. Many improvements are built into these reels to give the angler complete satisfaction.

**Guarantee**—Our reels are constructed throughout with the very best of materials and accurately fitted.

Careful inspection before assembling insures all our reels against defects in workmanship and material.

**Take Apart**—Our carefully designed take apart mechanism is of very rugged construction. Reel is easily taken apart for cleaning and oiling by unlocking knurled thumbscrew on front plate and a slight turn of front plate to the left.

**Drag**—Sturdy and carefully designed drag mechanism of selected material will give positive and very smooth action, thus removing danger of breaking or slipping line. Adjustable to a very fine degree by star wheel on handle. Entire drag mechanism can be oiled by means of oil channels from ball oiler on handle screw. This improvement insures perfect performance and prolongs life of friction discs.

**Free Spool**—We use two methods of disengaging gears. One is our patented sliding clutch type with spring lever control on rim. In this type the gears are always in mesh, thus removing possibility of stripping gears. The spring pressed lever enables the fisherman to easily shift gears, giving the utmost satisfaction.

A new method is our patented sliding gear type with handle control. This type is very convenient to the fisherman. Simply pull out



handle for free spool and push in to re-engage gears. Gears are spiral, generated to avoid slipping out of mesh when reeling in line.

**Oiling System**—Greatest care is taken in construction of the oiling system. All moving parts, including drag, can be oiled from the outside by our patented dustproof and waterproof ball oilers without removing any parts, therefore leaving no possibility of losing parts. This oiling system insures satisfactory performance and long life of the reel, as oiling is of greatest importance.

**Spool**—Spinning freely and in perfect balance on ground special alloy steel pivots. Bells are shaped and spun to spring hardness, preventing all possibility of frozen spool.

**Pivot Bearing**—Made of phosphor bronze with phosphor bronze end bearings and equipped with dustproof and waterproof ball oilers. Back bearing is adjustable to take up any spool end-play.

**Driving Gears**—Extra large driving gears giving increased speed in winding with decreased resistance. Made of phosphor bronze, with generated spiral teeth, assuring ease of action and will stand up under the most severe use. Gears are of standard size and interchangeable regardless of size of reel. Gear ratio,  $2\frac{1}{2}$  to 1 on 300 yd. and 250 yd. models, triple multiplying on 150 yd. and 100 yd. models.

**Ratchet Wheel and Click Tongue**—Made of special alloy steel, hardened and non-corrosive.

**Springs**—All steel springs throughout the reel are made of stainless steel, thus avoiding danger of corroding and breaking springs by salt water.

**Click Spring**—Made of tempered phosphor bronze, leaving no possibility of broken or corroded springs.

**Repair**—Due to the watchlike mechanism of our reels we do not advise taking reel apart for any other reason than cleaning and oiling. Our reels are guaranteed against defects in material and workmanship. Should reel get out of order after long and hard usage or through breaking, we recommend sending the reel back to factory and we will gladly replace parts at a very low cost.

**Repair Parts**—Greatest care is given to standardization of all parts wherever possible. Therefore most parts of our reels, like spool bearings, driving gears, pinions, drag mechanism, handle screws, click and clickspring, free-spool clutch arrangement, springs and screws, and etc., are of standard size and therefore interchangeable regardless of type or size of reel—a feature which has never before been accomplished. This factor is of utmost importance in the servicing and economy of the reel.

#### SPECIFICATION

SIZE OF REEL	PLATE DIA.	SPOOL-DIA.	SPOOL-WIDTH
100 YARD	2 $\frac{7}{8}$ "	2 $\frac{3}{16}$ "	1 $\frac{7}{16}$ "
150 YARD	3 $\frac{1}{16}$ "	2 $\frac{3}{8}$ "	1 $\frac{5}{8}$ "
250 YARD	3 $\frac{1}{4}$ "	2 $\frac{9}{16}$ "	1 $\frac{13}{16}$ "
300 YARD	3 $\frac{1}{2}$ "	2 $\frac{13}{16}$ "	2 $\frac{1}{8}$ "

#### WEIGHT OF REEL

REEL	100 YD.	150 YD.	250 YD.	300 YD.
NEW PORT		11 $\frac{1}{2}$ oz.	13 oz.	14 oz.
SEA HAWK		11 $\frac{1}{2}$ oz.	13 oz.	14 oz.
SEA FORD	12 $\frac{1}{2}$ oz.	14 oz.	15 $\frac{1}{2}$ oz.	17 oz.
BRIDGE CITY	13 $\frac{1}{2}$ oz.	15 oz.	16 $\frac{1}{2}$ oz.	18 oz.
BAY SIDE	13 $\frac{1}{2}$ oz.	15 oz.	16 $\frac{1}{2}$ oz.	18 oz.
LONG BEACH	14 $\frac{1}{2}$ oz.	16 oz.	17 $\frac{1}{2}$ oz.	19 oz.
OCEAN SIDE	15 oz.	16 $\frac{1}{2}$ oz.	18 oz.	19 $\frac{1}{2}$ oz.
CORONADO	16 oz.	17 $\frac{1}{2}$ oz.	19 oz.	20 $\frac{1}{2}$ oz.

#### LINE CAPACITY

SIZE OF LINE	No. 6	No. 9	No. 12	No. 15
100 YD. REEL	150 YD.	125 YD.	100 YD.	75 YD.
150 YD. REEL	200 YD.	175 YD.	150 YD.	125 YD.
250 YD. REEL	275 YD.	250 YD.	225 YD.	200 YD.
300 YD. REEL	325 YD.	300 YD.	275 YD.	250 YD.

**PENN FISHING TACKLE MFG. CO., PHILADELPHIA**