



PARTS LIST FOR MODELS TRQS9-BBLS (Bailless Rotor)

REEL PART NO. 1227757

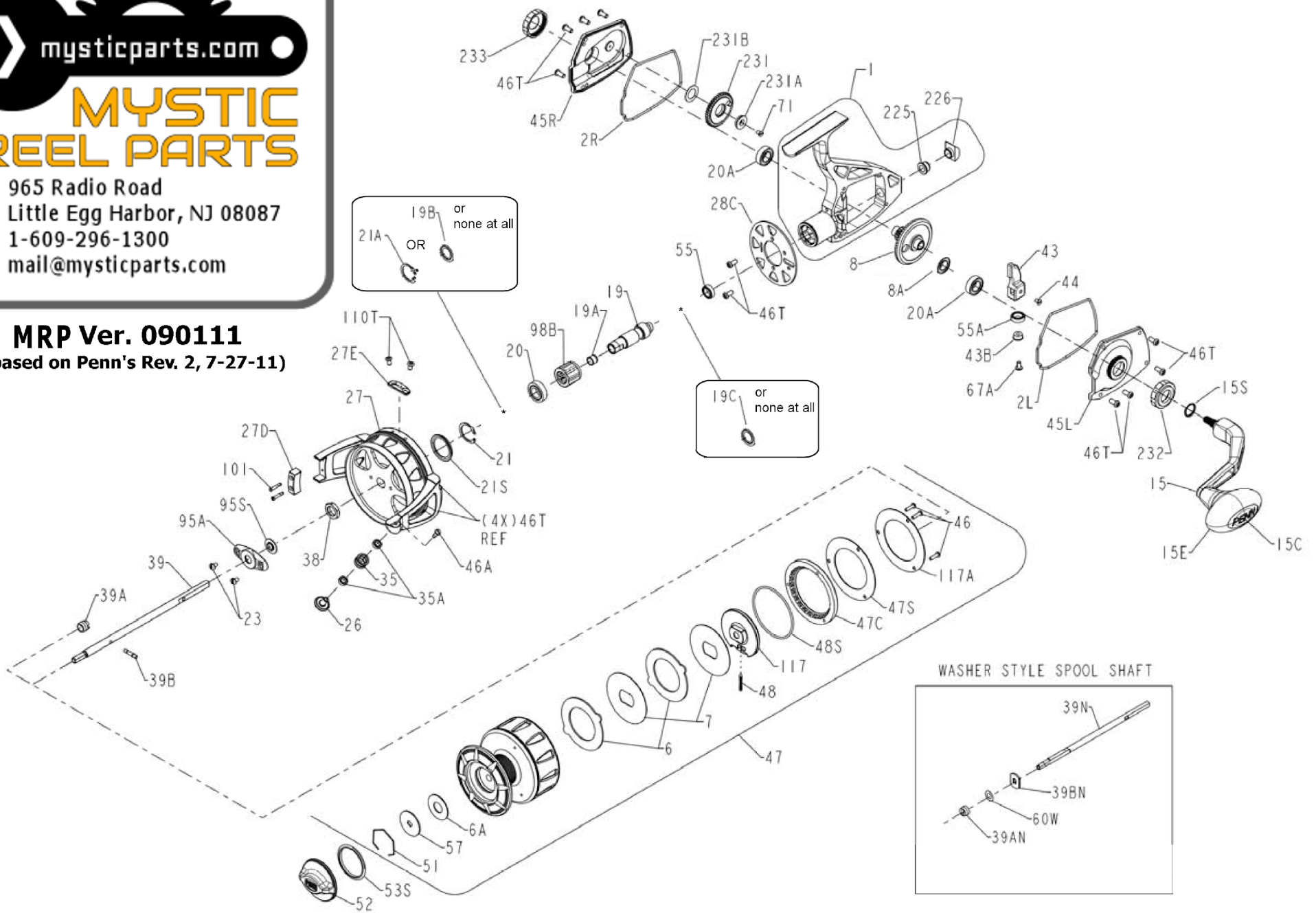


mysticparts.com

MYSTIC REEL PARTS

965 Radio Road
 Little Egg Harbor, NJ 08087
 1-609-296-1300
 mail@mysticparts.com

MRP Ver. 090111
(based on Penn's Rev. 2, 7-27-11)



Penn Reel Parts list for:

Model: TRQS9-BBLS (Black) (Bail-Less)

| KEY | Penn | PureFishing | DESCRIPTION | KEY | Penn | PureFishing | DESCRIPTION |
|---|----------|-------------|-------------------------------|--|------------|-------------|--------------------------------|
| NO | Part # | Part # | | NO | Part # | Part # | |
| 1 | 1-TS7B | 1200324 | HOUSING ARM (BLACK) | 45L | 45L-TS9B | 1200415 | L.S. COVER (BLACK) |
| 2L | 2L-TS7 | 1200326 | LEFT HOUSING GASKET | 45R | 45R-TS7B | 1200347 | R.S. COVER (BLACK) |
| 2R | 2R-TS7 | 1200327 | RIGHT HOUSING GASKET | 46 | 46-4300 | 1183567 | DRIVE COVER SCREW (3 REQ) |
| 6 | 6-950M | 1190981 | EARRED DRAG WASHER (2 REQ) | 46A | 46T-TS5M | 1225782 | LINE ROLLER SCREW |
| 6A | 6-309 | 1180917 | DRAG WASHER | 46T | 46T-TS7 | 1191914 | SCREW (14 REQ) |
| 7 | 7-TS7 | 1192588 | KEYED DRAG WASHER (2 REQ) | 47 | 47-TS9B | 1200417 | SPOOL ARM (BLACK) |
| 8 | 8-TS7 | 1192589 | GEAR ASSEMBLY | 47C | 47C-TS7 | 1192691 | DRAG COVER |
| 15 | 15-TS7B | 1200328 | HANDLE ASM. (BLACK) | 47S | 47S-TS7 | 1191959 | DRAG SEAL |
| 15C | 15C-TS7 | 1226716 | HANDLE KNOB CAP | 48 | 48-5600 | 1183710 | CLICK TONGUE ASSEMBLY |
| 15E | 15E-TS7 | 1229393 | HANDLE SEAL | 48S | 48S-TS7 | 1211091 | O-RING |
| 15S | 15S-TS7 | 1200419 | HANDLE SEAL | 51 | 51-8000CV2 | 1245795 | SPRING RETAINER RING |
| 19 | 19-TS7 | 1200330 | PINION | 52 | 52-TS7B | 1200351 | DRAG KNOB ASM (BLACK) |
| 19A | 19A-TS7 | 1192606 | PINION BUSHING | 53S | 53S-TS7 | 1211093 | DRAG KNOB SEAL |
| 20 | 20-TS7 | 1191260 | PINION BALL BEARING | 55 | 55-TS7 | 1192029 | BALL BEARING |
| 20A | 20A-TS7 | 1191263 | GEAR BALL BEARING (2 REQ) | 55A | 55A-TS7 | 1203081 | BALL BEARING |
| 21 | 21-TS7 | 1192641 | RETAINING RING | 57 | 57-760 | 1192695 | DRAG (METAL, KEYED) WASHER |
| 21S | 21S-TS7 | 1191276 | ROTOR SEAL | 67A | 67A-70 | 1184111 | SCREW |
| 23 | 23-750 | 1181953 | COVER SCREW (2 REQ) | 71 | 71-TS7 | 1200354 | FLAT HEAD SCREW |
| 26 | 26-TS7MB | 1225787 | ROLLER STUD (BLACK) | 95A | 95A-TS7 | 1192704 | ROTOR NUT COVER |
| 27 | 27-TS9MB | 1225800 | ROTOR ASSEMBLY (BLACK) | 95S | 95S-TS7 | 1192188 | SPOOL SHAFT SEAL |
| 27D | 27E-TS7M | 1225788 | BAILLESS BALANCE WEIGHT | 98B | 98B-760 | 1200355 | CLUTCH BEARING |
| 27E | 27E-TS9 | 1200410 | BALANCE WEIGHT | 101 | 101-TS5M | 1225783 | SCREW (2 REQ) |
| 28C | 28C-TS9B | 1200411 | ROTOR FLANGE (BLACK) | 110T | 110T-50 | 1184449 | SCREW (2 REQ) |
| 35 | 35-TS7 | 1205239 | LINE ROLLER | 117 | 117-TS7 | 1242923 | DRIVE PLATE |
| 35A | 35A-950M | 1182951 | BALL BEARING (2 REQ) | 117A | 117A-TS7 | 1192717 | SEAL COVER |
| 38 | 38-9500 | 1183160 | ROTOR NUT | 225 | 225-TS7 | 1192739 | REAR BUSHING |
| 39 | 39-TS7 | 1192686 | SPOOL SHAFT | 226 | 226-TS7 | 1192470 | REAR CAP |
| 39A | 39A-TS7 | 1205721 | LOCATING PIN SEAL | 231 | 231-TS7 | 1192740 | CROSSWIND GEAR ASM |
| 39B | 39B-760 | 1191765 | LOCATING PIN | 231A | 231A-TS7 | 1192741 | CROSSWIND GEAR BUSHING |
| 43 | 43-TS7 | 1191815 | CROSSWIND BLOCK | 231B | 231B-TS7 | 1192742 | CROSSWIND GEAR WASHER |
| 43B | 43B-TS7 | 1192690 | C.W. BEARING PILOT | 232 | 232-TS7B | 1200358 | OPEN BEARING COVER (BLACK) |
| 44 | 44-TS7 | 1225769 | CROSSWIND SCREW | 233 | 233-TS7B | 1200360 | CLOSED BEARING COVER (BLACK) |
| FOUND IN REEL BUT NOT ON ORIGINAL SCHEMATICS | | | | WASHER STYLE SPOOL SHAFT | | | |
| 21A | 21A-TS7 | ?? | SHIM, C-SHAPED W/FINGERS | 39N | 39N-TS7 | 1251997 | SPOOL SHAFT |
| 19B | 19B-TS7 | ?? | SHIM, ROUND, INSTEAD OF 21A | 39AN | 39AN-TS7 | 1251999 | DRIVE PLATE SEAL |
| In some reels we found 21A, others 19B, some no shim | | | | 39BN | 39B-TS7 | 1241979 | LOCATING WASHER |
| 19C | 19C-TS7 | ?? | SHIM, ROUND, F/LOW BEARING | 60W | 60W-TS7 | 1242146 | SPOOL SHIM |
| Again, in some reels there was a 19C shim, others, none | | | | MYSTIC REEL PARTS REVISION! | | | |
| 8A | 8A-TS7 | 1229050 | SHIM, MAIN GEAR (USES 0 to 3) | NOTE: | | | |
| | | | | Many of www.mysticparts.com schematics include changes that were either made by Penn, or errors found and corrected by our parts dept. | | | |
| | | | | MRP Ver 090111 (based on Penn's Rev. 8 7-27-11) | | | |