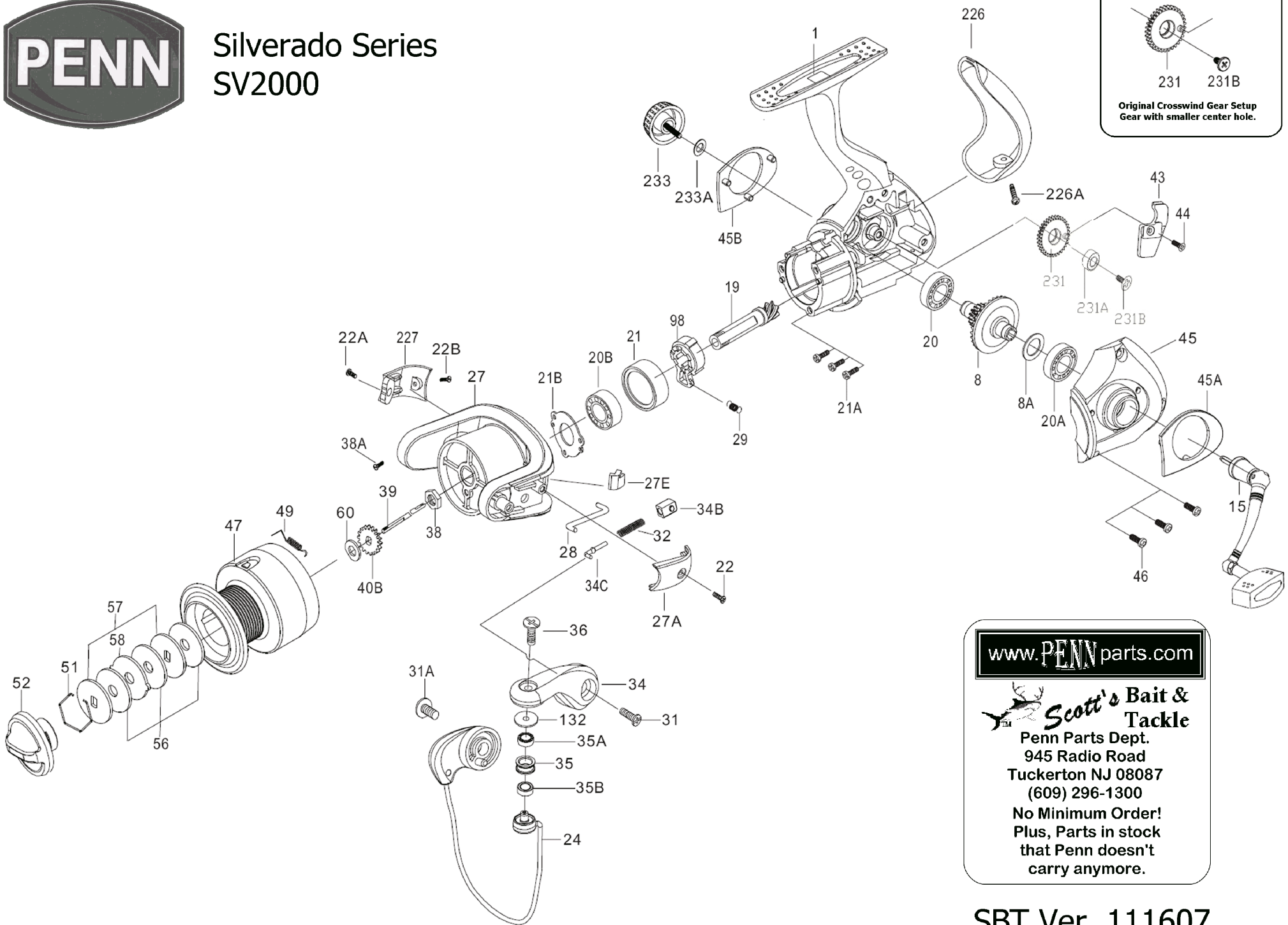




Silverado Series SV2000



www.PENNparts.com

Scott's Bait & Tackle
Penn Parts Dept.
945 Radio Road
Tuckerton NJ 08087
(609) 296-1300
No Minimum Order!
Plus, Parts in stock
that Penn doesn't
carry anymore.

Penn Reel Parts list for:

Model: SV2000 Silverado Series

KEY NO	PART NO.	DESCRIPTION	KEY NO	PART NO.	DESCRIPTION
1	1-2000SV	HOUSING	36	36-2000SV	BAIL STUD SCREW
8	8-2000SV	MAIN GEAR ASSEMBLY	38	38-2000CV	ROTOR NUT
8A	8A-500CV	MAIN GEAR SHIM	38A	38A-2000CV	ROTOR NUT SCREW
15	15-2000SV	HANDLE ASSEMBLY	39	39-2000SV	SPOOL SHAFT
19	19-2000SV	PINION GEAR	40B	40B-2000CV	CLICK RATCHET
20	20-500CV	HOUSING BALL BEARING	43	43-2000SV	CROSSWIND BLOCK
20A	20A-500CV	HOUSING COVER BALL BEARING	44	44-2000SV	CROSSWIND BLOCK SCREW
20B	20A-500CV	PINION BALL BEARING	45	45-2000SV	HOUSING COVER
21	21-2000SV	COLLAR	45A	45A-2000SV	LEFT SIDE REAR CAP
21A	21A-2000SV	BEARING MOUNTING SCREW (3 REQ.)	45B	45B-2000SV	RIGHT SIDE REAR CAP
21B	21B-2000SV	BALL BEARING FIXED WAHSER	46	46-2000CV	HOUSING COVER SCREW (3 REQ.)
22	22-2000SV	BAIL ARM COVER SCREW	47	47-2000SV	SPOOL ASSEMBLY
22A	22A-2000SV	SIDE COVER SCREW	49	49-2000CV	SPOOL CLICK SPRING
22B	22B-2000SV	SIDE COVER SCREW	51	51-2000CV	RETAINING RING
24	24-2000SV	BAIL WIRE	52	52-2000SV	DRAG KNOB
27	27-2000SV	ROTOR CUP	56	56-2000CV	FRICTION DRAG WAHSER (3 REQ.)
27A	27A-2000SV	BAIL PIVOT COER	57	57-2000CV	KEYED WASHER (2 REQ.)
27E	27E-2000SV	BALANCE WEIGHT	58	58-2000CV	DRAG WASHER, EARRD
28	28-2000SV	TRIP LEVER	60	60-2000CV	THRUST WASHER
29	29-2000SV	SPRING	98	98-2000SV	CLUTCH RETAINER
31	31-2000CV	BAIL ARM SCREW	132	132-2000SV***	ROLLER WASHER
31A	31-2000CV	BAIL WIRE SCREW	226	226-2000SV	REAR CAP
32	32-2000SV	BAIL SPRING	226A	226A-2000SV	REAR CAP SCREW
34	34-2000SV	BAIL ARM	227	227-2000SV	CAM COVER
34B	34B-2000SV	PIVOT GUIDE	231	231-2000SV	CROSSWIND GEAR
34C	34C-2000SV	PIVOT ARM	231A	231A-4000SV	CROSSWIND BEARING
35	35-2000SV	LINE ROLLER	231B	231B-2000SV	CROSSWIND GEAR SCREW
35A	35A-2000CV	LINE ROLLER BALL BEARING	233	233N-2000CV	BEARING COVER
35B	35B-2000SV	LINE ROLLER BUSHING	233A	233A-2000SV	BEARING COVER WASHER

Design Change Notes:

The original 231-2000SV crosswind gear had a small hole to fit on the housing. The newer 231-2000SV have a larger hole that sits the 231A-2000CV bearing

*** #132-2000CV was listed on Penn's schematic as the part number to be used on the SV2000 reel, but it was too large to fit into the bail arm. 132-2000SV would be the correct part #, not yet available by Penn as of this date.

USE:

PennParts.com replacement kit see #132-2000SVSP in our catalog

SERVICE NOTES:

Caution!

When removing PINION SHAFT and CLUTCH RETAINER inner collar. The roller bearings do not stay put in the plastic bearing case without assistance. Careful not to loose the bearings! If one drops reinstall and pack with Penn blue grease to hold in place until parts are reassembled.

NOTE: Many of www.pennparts.com schematics include changes that were either made by Penn, or errors found and corrected by our parts dept.
SBT Ver. 060510