



PARTS LIST FOR
MODEL SSVI4500BLS

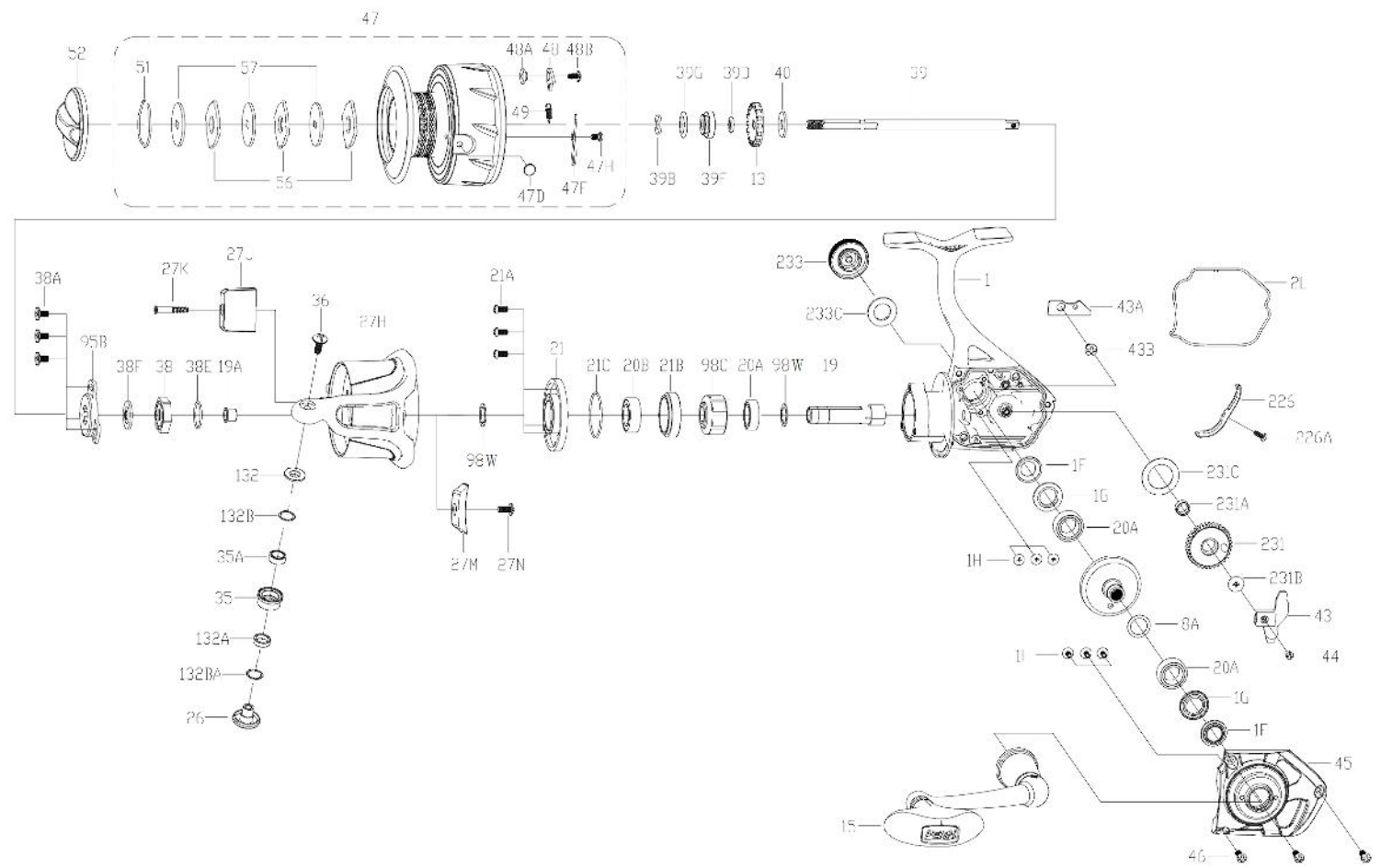


mysticparts.com

MYSTIC REEL PARTS

965 Radio Road
Little Egg Harbor, NJ 08087
+1 (609) 296-1300
www.mysticparts.com
customerservice@mysticparts.com

MRP Ver 102118
(based on Penn's Rev 4 3-9-2020)



Penn Reel Parts list for Model: SSVi4500BLS Spinfisher VI - Bail-less (1481269)

KEY NO	'PUREFISHING' NO.	PENN PART NO.	DESCRIPTION
1	1489242	1-SSVi4500BLS	HOUSING, BODY ASSEMBLY
1F SEE CORRECTIONS BELOW			
1G	1489175	1G-SSVi3500	SEAL PLATE (2 REQUIRED)
1H	1489176	1H-SSVi3500	BEARING SCREW (6 REQUIRED)
2L	1489178	2L-SSVi3500	SEAL FOR HOUSING BODY
8	1489179	8-SSVi3500	MAIN DRIVE GEAR
8A	1191028	8A-3000SG	SHIM, WASHER (FOR MAIN GEAR)
13	1489180	13-SSVi3500	CLICK RATCHET
15 for Handle see below			
19	1489182	19-SSVi3500	PINION GEAR
19A	1191252	19A-3000SG	PINION GEAR WASHER
20A	1308050	20-CFT3000	BALL BEARING (3 REQUIRED)
20B	1308051	20A-CFT3000	BALL BEARING
21	1489183	21-SSVi3500	PINION BEARING RETAINER
21A	1489184	21A-SSVi3500	PINION RETAINER SCREW (3 REQUIRED)
21B	1489185	21B-SSVi3500	COLLAR, FOR PINION BALL BEARING
21C	1489186	21C-SSVi3500	O-RING, FOR BEARING RETAINER
26	1489023	26-SSVi4500BLS	LINE SLIDER
CORRECTIONS BELOW			
27N	1203997	43B-3000PUR	SCREW FOR ROTOR COVER (AKA BAIL PIVOT)
27J	1489244	27J-SSVi4500BLS	CLUMP WEIGHT
27K	1489245	27K-SSVi4500BLS	CLUMP WEIGHT SCREW
27M	1489246	27M-SSVi4500BLS	CLUMP WEIGHT
35	1489249	35-SSVi4500BLS	LINE ROLLER
35A	1489200	35A-SSVi3500	LINE ROLLER BALL BEARING
36	1191699	36-3000SG	LINE ROLLER SCREW
38	1489201	38-SSVi3500	ROTOR NUT
38A	1308069	38A-CFT3000	ROTOR NUT LOCK PLATE SCREW (3 REQUIRED)
38E	1489203	38E-SSVi3500	ROTOR O-RING
38F	1489204	38F-SSVi3500	SEAL RING (FOR MAIN SHAFT)
39	1489238	39-SSVi4500	MAIN SPOOL SHAFT
39B	1489206	39B-SSVi3500	THRUST WASHER
39D	1489207	39D-SSVi3500	SPOOL BUSHING SEAL RING
39F	1489208	39F-SSVi3500	SPOOL BUSHING

CORRECTIONS

**** NOT ON REV0 BUT WAS FOUND IN THE REEL**

233C**	1419016	233C-SLA3500	SEAL, HANDLE CAP SEAL
132B**	??	132B-SSVi3500	WASHER, found between ?? In roller system
132BA**	??	132B-SSVi4500BLS	WASHER, found between ?? In roller system

PART#s ASSIGNED BY MRP found during breakdown of BLS reel ONLY

Made up above 132B part numbers based on the 132 part number. Will see if shows on later revisions by Penn

1F 1489174 1F-SSVi3500 SEAL RING -- ERROR ON PENN'S REV 1
USE: 1543684 1F-SSVi4500BLS SEAL RING (FOR MAIN GEAR) (2 REQUIRED)

27H 1489236 27-SSVi4500 ROTOR -- ERROR ON PENN'S REV 1
USE: 1543684 1F-SSVi4500BLS SEAL RING (FOR MAIN GEAR) (2 REQUIRED)

KEY NO	PUREFISHING NO.	PENN PART NO.	DESCRIPTION
39G	1489209	39G-SSVi3500	SPOOL SEAL RING
40	1489210	40-SSVi3500	MAIN SHAFT WASHER
43	1489211	43-SSVi3500	OSCILLATION SLIDER (CROSSWIND BLOCK)
43A	1489212	43A-SSVi3500	OSCILLATION SLIDER GUIDE (CROSSWIND PLATE)
43B	1489213	43B-SSVi3500	CROSSWIND OSCILLATION SLIDER BUSHING SCREW
44	1489214	44-SSVi3500	CROSSWIND BLOCK SCREW
45	1489239	45-SSVi4500	HOUSING / BODY COVER
46	1192645	21A-5000SG	HOUSING / BODY COVER SCREW (3 REQUIRED)
47	1489247	47-SSVi4500BLS	SPOOL ASSEMBLY
47D	1489217	47D-SSVi3500	LINE CLIP
47F	1489218	47F-SSVi3500	LINE CLIP SPRING
47H	1489219	47H-SSVi3500	LINE CLIP SPRING SCREW
48	1211604	48-3000SG	CLICK TONGUE
48A	1214226	48A-3000SG	CLICK TONGUE WASHER
48B	1489220	48B-SSVi3500	SPOOL CLICK SCREW
49	1211605	49-3000SG	CLICK TONGUE SPRING
51	1308078	51-CFT3000	DRAG WASHER RETAINING RING
52	1489221	52-SSVi3500	DRAG KNOB ASSEMBLY
56	1308080	56-CFT3000	DRAG FRICTION WASHER (3 REQUIRED)
57	1489222	57-SSVi3500	KEYED METAL DRAG WASHER (3 REQUIRED)
95B	1489223	95B-SSVi3500	ROTOR NUT LOCKING PLATE / COVER
98C	1308082	98C-CFT3000	CLUTCH / SLEEVE ASSEMBLY
98W	1204004	98W-3000PUR	CLUTCH WASHER (2 REQUIRED)
132	1489248	132-SSVi4500BLS	LINE ROLLER COLLAR
132A	1489225	132A-SSVi3500	LINE ROLLER BUSHING
**	?	132B-SSVi3500	LINE ROLLER WASHER (FOUND DURING EXAM)
**	?	132B-SSVi4500BLS	LINE ROLLER WASHER (FOUND DURING EXAM)
226	1489226	226-SSVi3500	REAR COVER
226A	1489227	226A-SSVi3500	REAR COVER SCREW
231	1489241	231-SSVi4500	CROSSWIND OSCILLATION GEAR
231A	1489229	231A-SSVi3500	CROSSWIND GEAR BUSHING
231B	1489230	231B-SSVi3500	CROSSWIND OSCILLATION GEAR SCREW
231C	1489231	231C-SSVi3500	CROSSWIND GEAR WASHER
233	1489232	233-SSVi3500	BEARING COVER ASSEMBLY (HANDLE CAP)

MYSTIC REEL PARTS REVISION!

NOTE: Many of www.mysticparts.com schematics include changes that were either made by Penn, or errors found and corrected by our parts dept.
 MRP Ver 102118 (Based on Penn's Rev.4 , 3-9-2020)

HANDLES

KEY NO	PUREFISHING NO.	PENN PART NO.	DESCRIPTION
15	1489181	15-SSVi3500	HANDLE ASSEMBLY (STOCK HANDLE FOR SSVi4500)
15*	1418975	15-SLA3500	HANDLE (OPTIONAL) (FROM SLAIII SERIES ALL METAL ROUND KNOB)