



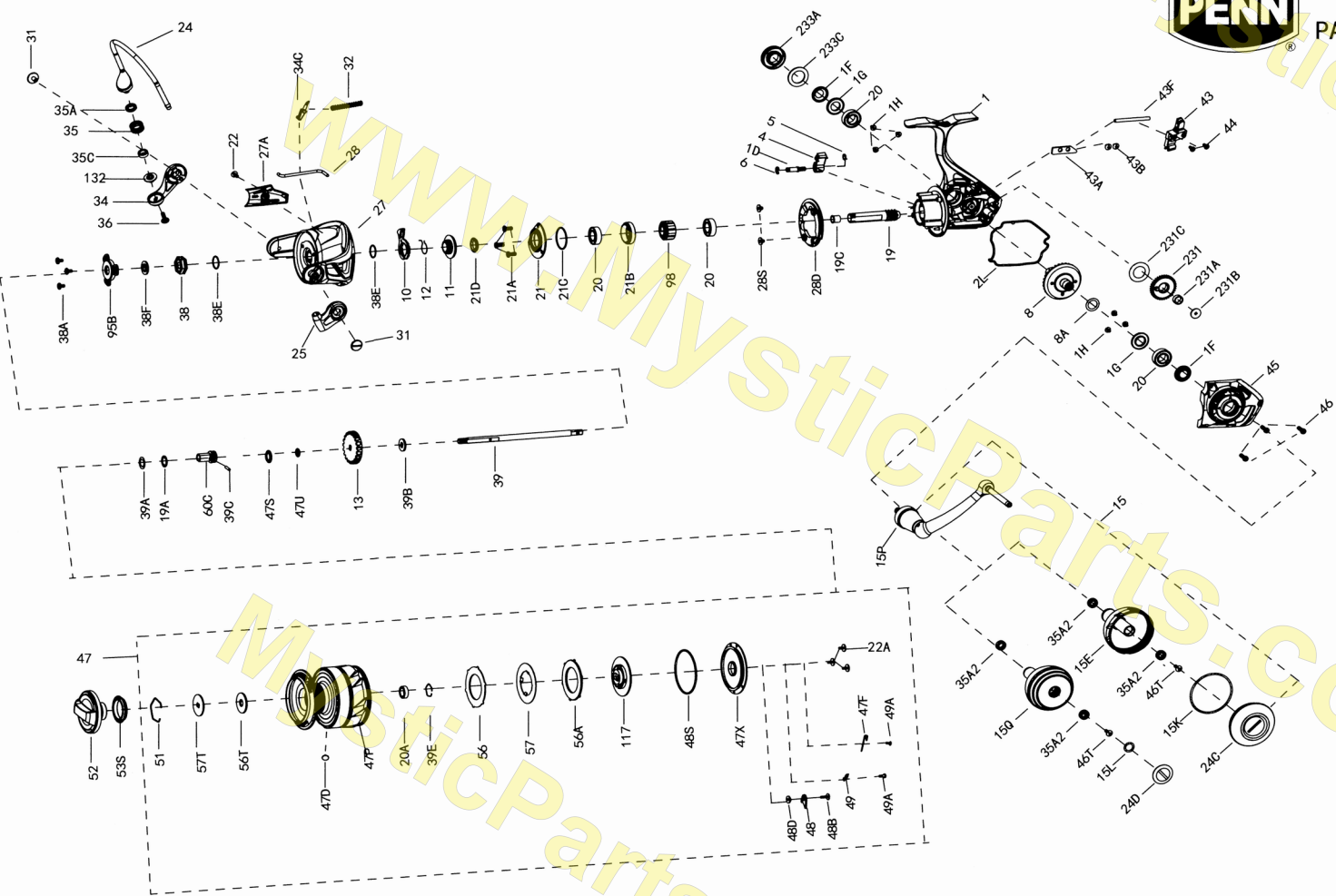
PARTS LIST FOR MODEL SLAMMERIV6500
SLAiv6500 (1545766)



mysticparts.com
**MYSTIC
REEL PARTS**
965 Radio Road
Little Egg Harbor, NJ 08087
+1 (609) 296-1300
www.mysticparts.com
customerservice@mysticparts.com

MRP Ver. 053122

(based on Penn's Rev. 01 4-21-21)



Penn Reel Parts list for Model: SLAiv6500 (1545766) SLAMMER iv SPINNING

** MANUAL BAIL TRIP **

KEY	PUREFISHING PART			DESCRIPTION
NO	NO	NO.		
1	1559317	1-SLAiv6500		BODY/HOUSING
1D	1277140	1D-SSV7500		A/R PAWL POST
1F	1419019	1F-SLA5500		BODY BALL BEARING SEAL (2 REQUIRED)
1G	1419020	1G-SLA5500		BODY SIDE SEAL LOCK PLATE (2 REQUIRED)
1H	1418957	1H-SLA3500		BODY SIDE SCREW (6 REQUIRED)
2L	1419036	2L-SLA6500		BODY SEAL
4	1389459	4-CLA6000		A/R PAWL POST
5	1339474	5-CLA5000		PAWL SPRING
6	1277144	6-SSV7500		RETAINER CLIP
8	1419034	8-SLA5500		DRIVE GEAR (MAIN GEAR) (CNC)
8A	1277037	8A-SSV5500		DRIVE GEAR SHIM WASHER
10	1419936	10-CLA65000		A/R PAWL HOLDER
11	1559262	11-SLAiv5500		A/R BUSHING
12	1339487	12-CLA5000		A/R BUSHING SPRING
13	1419053	13-SLA5500		CLICK GEAR
19	1559325	19-SLAiv6500		PINION GEAR (CNC) (BRASS)
19A	1277424	19A-SLA3500		WASHER, AT PINION AND SPOOL SUPPORT SLEEVE (2 REQUIRED)
19C	1419023	19C-SLA5500		PINION GEAR BUSHING
20	1308090	20-CFT5000		BALL BEARING (4 REQUIRED)
20A	1385530	20A-CLA3000		SEALED BALL BEARING
21	1559266	21-SLAiv5500		BALL BEARING RETAINER
21A	1277154	21A-SSV7500		PINION RETAINER SCREW (3 REQUIRED)
21B	1419024	21B-SLA5500		PINION BALL BEARING COLLAR
21C	1385684	21C-CLA8000		O-RING
21D	1559267	21D-SLAiv5500		SEAL
22	1276928	22-SSV3500		ROTOR COVER SCREW
22A	1496533	22A-SLA7500		DRAG COVER SCREW (3 REQUIRED)
24	1559322	24-SLAiv6500		BAIL WIRE
25	1339500	25-CLA5000		BAIL HOLDER
27	1559319	27-SLAiv6500		ROTOR
27A	1559321	27A-SLAiv6500		ROTOR COVER
28	1559320	28-SLAiv6500		ROTOR TRIP LEVER
28D	1457402	28D-SLAiv65000HS		ROTOR BRAKE
28S	1339512	28S-CLA5000		ROTOR BRAKE SCREW (2 REQUIRED)
31	1277055	31-SSV5500		BAIL ARM SCREW (2 REQUIRED)
32	1389467	32-CLA6000		BAIL SPRING
34	1389468	34-CLA6000		BAIL ARM
34C	1389469	34C-CLA6000		PIVOT ARM
35	1457403	35-SLAiii6500HS		LINE ROLLER
35A	1457404	35A-SLAiii6500HS		LINE ROLLER BUSHING
35C	1559273	35C-SLAiv5500		LINE ROLLER BALL BEARING
36	1422399	36-SLA9500		LINE ROLLER SCREW
38	1419051	38-SLA5500		ROTOR NUT
38A	SEE PROBLEMS FOUND PAGE 3			
38E	1418958	38E-SLA3500		PINION GEAR SEAL
38F	1419052	38F-SLA5500		ROTOR-MAIN SHAFT SEAL

KEY	PUREFISHING PART			DESCRIPTION
NO	NO	NO.		
39	1559324	39-SLAiv6500		MAIN SHAFT
39A	1559275	39A-SLAiv5500		WASHER, FOR SPOOL SHAFT SLEEVE
39B	1277067	39B-SSV5500		WASHER, FOR MAIN SHAFT BELOW CLICK GEAR
39C	1559276	39C-SLAiv5500		PIN
39E	1559277	39E-SLAiv5500		RETAINER
43	1419031	43-SLA6500		OSCILLATION SLIDER (CROSSWIND BLOCK)
43A	1339536	43A-CLA5000		OSCILLATION SLIDER GUIDE
43B	1559161	43B-SLAiv2500		SCREW, AT ROTOR COVER AND CROSSWIND PLATE (2 REQUIRED)
43F	1419029	43F-SLA6500		GUIDE SHAFT
44	1277072	44-SSV5500		SCREW, FOR MAIN SHAFT
45	1559318	45-SLAiv6500		BODY COVER ASSEMBLY
46	1277074	46-SSV5500		BODY COVER SCREW (3 REQUIRED)
47	1559327	47-SLAiv6500		SPOOL ASSEMBLY
47D	1259574	10-7000AF		LINE HOOK
47F	1419068	47F-SLA6500		LINE CLIP RETAINER
47P	1559323	47P-SLAiv6500		SPOOL (BARE)
47S	1559281	47S-SLAiv5500		SPOOL SEAL
47U	1525247	47U-CLAi5500		DRAG COVER SEAL
47X	1559282	47X-SLAiv5500		DRAG COVER
48	1419069	48-SLA5500		SPOOL CLICK PLATE
48B	1419156	48B-SLA9500		SPOOL CLICKER SPRING SCREW
48D	1385579	48D-CLA3000		SPOOL CLICKER SPACER RING
48S	1276958	48S-SSV3500		SEAL, FOR DRAG COVER
49	1385580	49-CLA3000		SPRING
49A	1559283	49A-SLAiv5500		SCREW (2 REQUIRED)
51	1277085	51-SSV5500		DRAG WASTER RETAINER
52	1559284	52-SLAiv5500		DRAG KNOB ASSEMBLY
53S	1339555	53S-CLA5000		DRAG KNOB SEAL
56	1419060	56-SLA5500		DRAG FRICTION WASHER
56A	1419062	56A-SLA5500		DRAG FRICTION WASHER
56T	1277089	56T-SSV5500		DRAG FRICTION WASHER
57	1559285	57-SLAiv5500		KEYED DRAG WASHER
57T	1419058	57T-SLA5500		KEYED DRAG WASHER
60C	1559286	60C-SLAiv5500		SPOOL SUPPORT SLEEVE
95B	1419009	95B-SLA3500		ROTOR NUT LOCKING PLATE
98	1277094	98-SSV5500		CLUTCH/SLEEVE ASSEMBLY
117	1559287	117-SLAiv5500		DRAG DRIVE PLATE
132	1559326	132-SLAiv6500		LINE ROLLER COLLAR
231	1389600	231-CLA6000		OSCILLAION GEAR (CROSSWIND GEAR)
231A	1339566	231A-CLA5000		OSCILLATION GEAR BUSHING
231B	1525918	231B-CLAi5500		OSCILLATION GEAR SCREW
231C	1389603	231C-CLA6000		OSCILLATION GEAR WASHER
233A	1559288	233A-SLAiv5500		HANDLE CAP
233C	1419076	233C-SLA5500		HANDLE CAP WASHER

NOTE: MYSTIC REEL PARTS REVISION!

Many of www.mysticparts.com schematics include changes that were either made by Penn, or errors found and corrected by our parts dept.
MRP Ver. 053122 (based on Penn's Rev. 01 4-21-21)

See Page 3 for all handle components

HANDLE ASSEMBLY AND COMPONENT INFO FOR THE TWO TYPES OF HANDLES

METAL KNOB HANDLE COMPONENTS

KEY	PUREFISHING PART			DESCRIPTION
<u>NO</u>	<u>NO</u>	<u>NO.</u>		
15	1559263	15-SLAiv5500		HANDLE ASSEMBLY (METAL KNOB)
15E	1559264	15E-SLAiv5500		HANDLE KNOB (METAL)
15K	1419073	15K-SLA5500		HANDLE KNOB CAP SEAL
15P	1422395	15P-SLA5500		SUB-HANDLE ASSEMBLY
24C	1559269	24C-SLAiv5500		HANDLE KNOB CAP (FOR METAL KNOB)
35A2	1377606	35A-BTLI8000LC		KNOB BALL BEARING (2 REQUIRED)
46T	1277046	22-SSV5500		SCREW

FOAM KNOB HANDLE COMPONENTS

KEY	PUREFISHING PART			DESCRIPTION
<u>NO</u>	<u>NO</u>	<u>NO.</u>		
15	N/A	N/A		FOAM HANDLE NOT AVAILABLE PRE-ASSEMBLED
15Q	1559265	15E-SLAiv5500		HANDLE KNOB (FOAM)
15L	??	15L-CLA5000		HANDLE KNOB SEAL (THICKER / LARGER) ** SEE NOTES BELOW! **
15P	1422395	15P-SLA5500		SUB-HANDLE ASSEMBLY
24D	1417808	24C-CLA5000		HANDLE KNOB CAP (FOR FOAM KNOB)
35A2	1377606	35A-BTLI8000LC		KNOB BALL BEARING (2 REQUIRED)
46T	1277046	22-SSV5500		SCREW

15L NOTES:

Penn's rev00 schematics list the 15L as 15L-cftii3000 on SLAiv SIZES 5500 THRU 6500HS (INCORRECT PART#)

15L-CFTii3000 are much smaller and thinner than the seal that was found on the 24C-CLA5000 caps during disassembly.

We could not identify an existing Penn number to match it to, so we have assigned the number as 15L-CLA5000 Seal (Thicker/Larger)

PROBLEMS FOUND AND CORRECTED

38A	1126326	24-ORRA-S10	SCREW (3 REQUIRED) ** INCORRECT PART NUMBER DO NOT USE
	1277063	38A-SSV5500	SCREW (3 REQUIRED) ** USE THIS PART