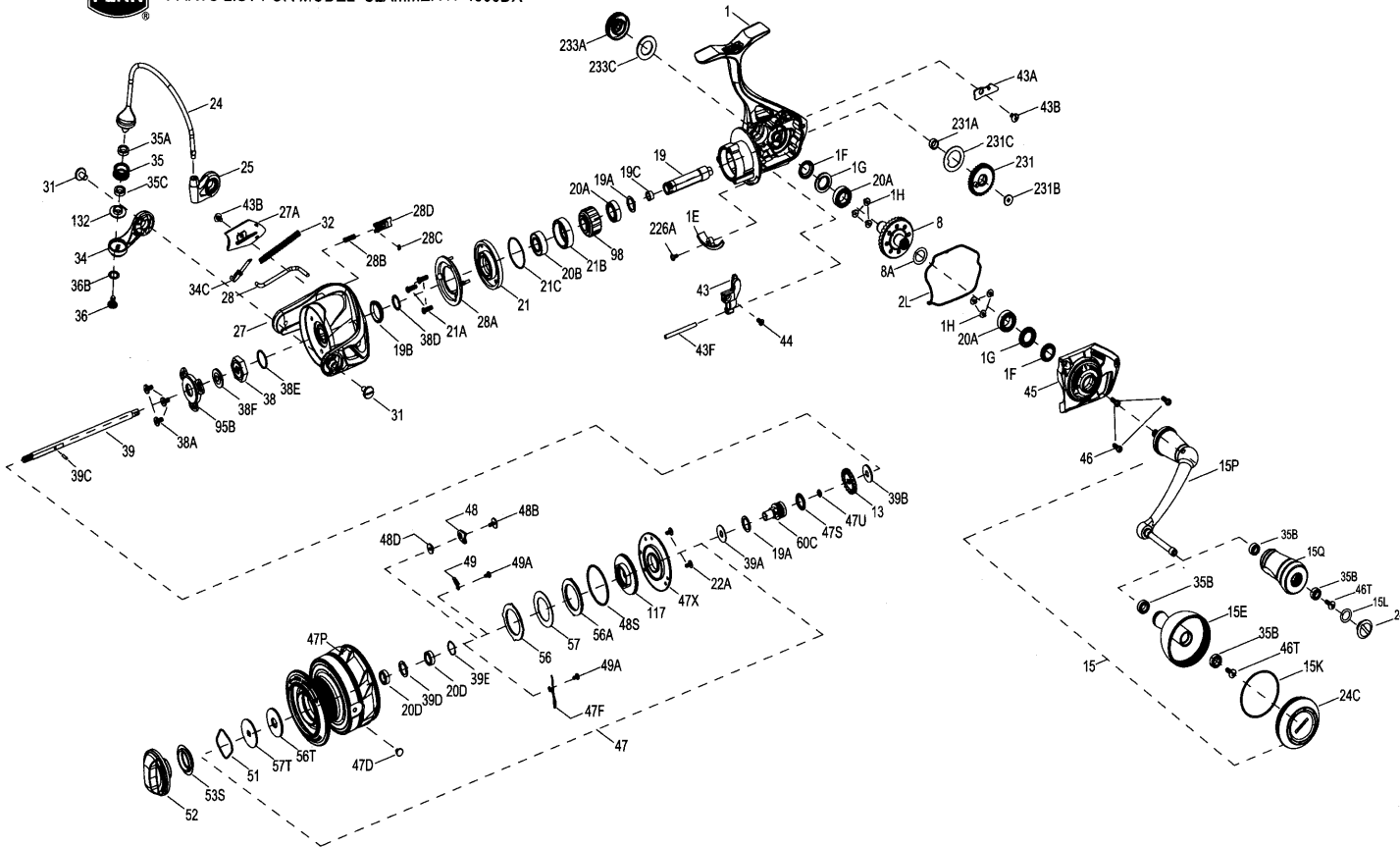




PARTS LIST FOR MODEL SLAMMER IV 4500DX



| KEY NO. | PART NO. | PENN STYLE NO.   | DESCRIPTION                      |
|---------|----------|------------------|----------------------------------|
| 34      | 1559232  | 34-SLAIV3500DX   | Bail Arm                         |
| 34C     | 1385551  | 34C-CLA3000      | Pivot Arm                        |
| 35      | 1525198  | 35-CLAI13000     | Line Roller                      |
| 35A     | 1474155  | 35A-SLAI13500    | Line Roller Bushing              |
| 35B     | 1418393  | 35B-CLA3000      | Ball Bearing (2req.)             |
| 35C     | 1525199  | 35C-CLAI13000    | Bearing                          |
| 36      | 1277061  | 36-SSV5500       | Line Roller Screw                |
| 36B     | 1417809  | 36B-CLA6000      | Bail Arm Screw Washer            |
| 38      | 1418993  | 38-SLA3500       | Rotor Nut                        |
| 38A     | 1119121  | 20C-7000AF       | Screw (3req.)                    |
| 38D     | 1559205  | 38D-SLAIV3500    | Washer                           |
| 38E     | 1418958  | 38E-SLA3500      | Pinion Gear Seal                 |
| 38F     | 1418959  | 38F-SLA3500      | Rotor-Main Shaft Seal            |
| 39      | 1559244  | 39-SLAIV4500     | Main Shaft                       |
| 39A     | 1559275  | 39A-SLAIV5500    | Washer                           |
| 39B     | 1422917  | 40-SLA3500       | Washer                           |
| 39C     | 1559217  | 39C-SLAIV3500    | Pin                              |
| 39D     | 1559238  | 39D-SLAIV3500DX  | Washer                           |
| 39E     | 1559220  | 39E-SLAIV3500    | Retainer                         |
| 43      | 1418996  | 43-SLA3500       | Oscillation Slider               |
| 43A     | 1418997  | 43A-SLA3500      | Slider Retainer Plate            |
| 43B     | 1559161  | 43B-SLAIV2500    | Screw(2req.)                     |
| 43F     | 1385563  | 43F-CLA3000      | Guide Shaft                      |
| 44      | 1525911  | 44-CLAI13000     | Screw                            |
| 45      | 1559251  | 45-SLAIV4500DX   | Body Cover Assembly              |
| 46      | 1385567  | 46-CLA3000       | Body Cover Screw (3req.)         |
| 46T     | 1341500  | 3-SSV7500LC      | A/R Button Screw                 |
| 47      | 1559252  | 47-SLAIV4500DX   | Spool Assembly                   |
| 47D     | 1276953  | 47D-SSV3500      | Line Clip                        |
| 47F     | 1419068  | 47F-SLA65000     | Line Clip Retainer               |
| 47P     | 1559253  | 47P-SLAIV4500DX  | Spool                            |
| 47S     | 1494699  | 47S-SSV12500LL   | Seal                             |
| 47U     | 1494700  | 47U-SSV12500LL   | Seal                             |
| 47X     | 1559221  | 47X-SLAIV3500    | Drag Cover                       |
| 48      | 1419069  | 48-SLA5500       | Spool Click Plate                |
| 48B     | 1559212  | 48B-SLAIV3500    | Screw                            |
| 48D     | 1385579  | 48D-CLA3000      | Spool Clicker Spacer Ring        |
| 48S     | 1559211  | 48S-SLAIV3500    | Seal                             |
| 49      | 1259579  | 49-7000AF        | Spring                           |
| 49A     | 1559283  | 49A-SLAIV5500    | Screw                            |
| 51      | 1277085  | 51-SSV5500       | Drag Washer Retainer             |
| 52      | 1559236  | 52-SLAIV3500DX   | Drag Knob Assembly               |
| 53S     | 1385583  | 53S-CLA3000      | Drag Knob Seal                   |
| 56      | 1418961  | 56-SLA3500       | Drag Friction Washer             |
| 56A     | 1418962  | 56A-SLA3500      | Drag Friction Washer             |
| 56T     | 1277089  | 56T-SSV5500      | Drag Friction Washer             |
| 57      | 1419008  | 57-SLA3500       | Keyed Drag Washer                |
| 57T     | 1276985  | 57T-SSV4500      | Keyed Drag Washer                |
| 60C     | 1559214  | 60C-SLAIV3500    | Spool Support Sleeve             |
| 95B     | 1419009  | 95B-SLA3500      | Rotor Nut Locking Plate          |
| 98      | 1276966  | 98-SSV3500       | Clutch/Sleeve Assembly           |
| 117     | 1559215  | 117-SLAIV3500    | Drag Drive Plate                 |
| 132     | 1474156  | 132-SLAI13500    | line roller collar               |
| 226A    | 1525914  | 226A-CLAI13000   | Screw                            |
| 231     | 1419014  | 231-SLA4500      | Oscillation Gear                 |
| 231A    | 1385595  | 231A-CLA2000     | O/S Gear Bushing                 |
| 231B    | 1307857  | 231B-SSV3500     | Oscillation Gear Screw           |
| 231C    | 1525915  | 231C-CLAI13000   | Oscillation Gear Washer          |
| 233A    | 1559237  | 233A-SLAIV3500DX | Handle Cap                       |
| 233C    | 1419016  | 233C-SLA3500     | Handle Cap Seal                  |
| 1       | 1559248  | 1-SLAIV4500DX    | Body Assembly                    |
| 1E      | 1418954  | 1E-SLA3500       | Body Slope                       |
| 1F      | 1418955  | 1F-SLA3500       | Body Ball Bearing Seal (2req.)   |
| 1G      | 1418956  | 1G-SLA3500       | Body Side Seal Lock Plate(2req.) |
| 1H      | 1418957  | 1H-SLA3500       | Body Side Screw(6req.)           |
| 2L      | 1559194  | 2L-SLAIV3500     | Seal                             |
| 8       | 1559179  | 8-SLAIV2500DX    | Drive Gear                       |
| 8A      | 1257352  | 8A-CLA2000       | Shim                             |
| 13      | 1418974  | 13-SLA3500       | Click Gear                       |
| 15      | 1559223  | 15-SLAIV3500DX   | Handle Assembly                  |
| 15E     | 1559224  | 15E-SLAIV3500DX  | Handle Knob                      |
| 15K     | 1418968  | 15K-SLA3500      | Handle Knob Cap Seal             |
| 15L     | 1417804  | 15L-CLA2000      | Handle Knob Seal                 |
| 15P     | 1559225  | 15P-SLAIV3500DX  | Sub-Handle Assembly              |
| 15Q     | 1559226  | 15Q-SLAIV3500DX  | Handle Knob Assembly             |
| 19      | 1559227  | 19-SLAIV3500DX   | Pinion Gear                      |
| 19A     | 1277424  | 19A-SSV3500      | Pinion Gear Washer(2req.)        |
| 19B     | 1559218  | 19B-SLAIV3500    | Seal                             |
| 19C     | 1418978  | 19C-SLA3500      | Pinion Gear Bushing              |
| 20A     | 1385532  | 20C-CLA3000      | Sealed Ball Bearing(3req.)       |
| 20B     | 1385531  | 20B-CLA3000      | Sealed Ball Bearing              |
| 20D     | 1385604  | 20D-CLA2000      | Sealed Ball Bearing(2req.)       |
| 21      | 1418979  | 21-SLA3500       | Ball Bearing Retainer            |
| 21A     | 1418980  | 21A-SLA3500      | Retainer Screw(3req.)            |
| 21B     | 1385535  | 21B-CLA3000      | Pinion Ball Bearing Collar       |
| 21C     | 1418981  | 21C-SLA3500      | Body Head Seal                   |
| 22A     | 1417806  | 22A-SLA3500      | Drag Cover Screw(2req.)          |
| 24      | 1559240  | 24-SLAIV4500     | One Piece Bail                   |
| 24C     | 1559228  | 24C-SLAIV3500DX  | Handle Knob Cap                  |
| 24D     | 1417806  | 24C-CLA3000      | Handle Knob Cap                  |
| 25      | 1559229  | 25-SLAIV3500DX   | Bail Holder                      |
| 27      | 1559249  | 27-SLAIV4500DX   | Rotor                            |
| 27A     | 1559250  | 27A-SLAIV4500DX  | Rotor Cover                      |
| 28      | 1559243  | 28-SLAIV4500     | Rotor Trip Lever                 |
| 28A     | 1418967  | 28D-SLA3500      | Rotor Brake                      |
| 28B     | 1346982  | 28B-CLA2000      | Spring                           |
| 28C     | 1385547  | 28C-CLA3000      | Rotor Brake Seal                 |
| 28D     | 1385545  | 28D-CLA3000      | Rotor Brake                      |
| 31      | 1276936  | 31-SSV3500       | Bail Arm Screw (2req.)           |
| 32      | 1385549  | 32-CLA3000       | Bail Spring                      |

407-SLAIV4500DX Rev.00 4-20-2021  
1545774-SLAIV4500DX