

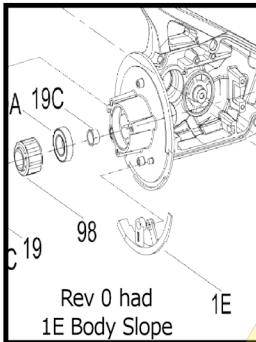
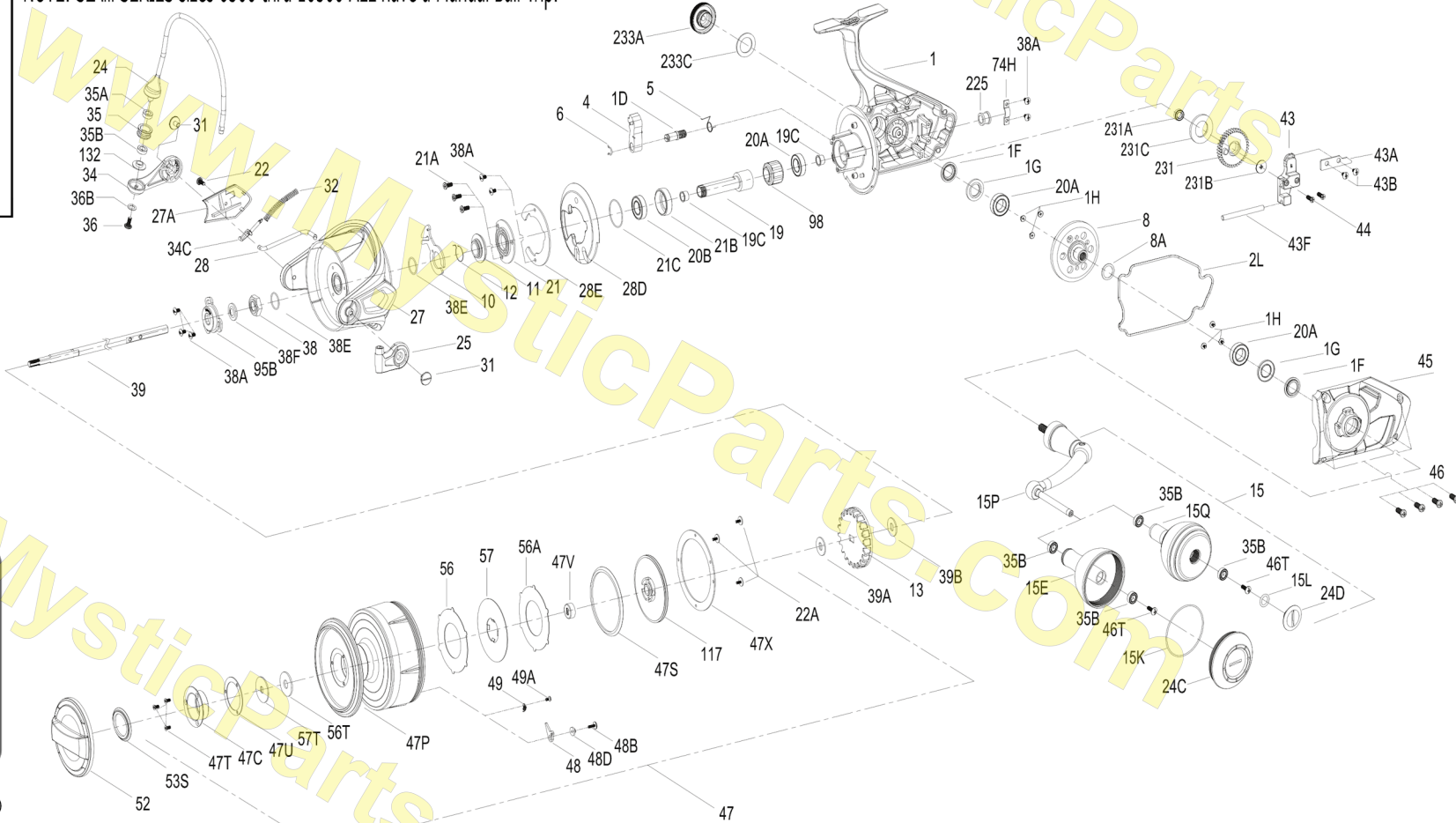
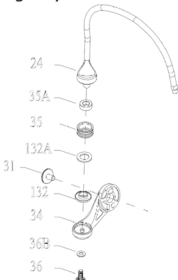


PARTS LIST FOR MODEL SLAMMERIII 9500

Model # SLA9500 (aka SLAiii9500) 1403988

NOTE: SLAiii SERIES sizes 6500 thru 10500 ALL have a Manual Bail Trip.

ORIGINAL BAIL SETUP
With different bail, roller etc.
Bushing only version



mysticparts.com
MYSTIC REEL PARTS
 965 Radio Road
 Little Egg Harbor, NJ 08087
 +1 (609) 296-1300
 www.mysticparts.com
 customerservice@mysticparts.com

MRP Ver 010120
(based on Penn's Rev. 1 07-01-17)

Penn Reel Parts list for Model: SLA9500 (SLAiii9500) SLAMMER iii SPINNING

(MANUAL BAIL TRIP)

KEY	PUREFISHING PART		DESCRIPTION
NO	NO	NO.	
1	1419122	1-SLA9500	BODY/HOUSING
1D	1277252	1D-SSV9500	A/R PAWL POST
1E	1419119	1E-SLA9500	BODY SLOPE
1F	1419083	1F-SLA7500	BODY BALL BEARING SEAL (2 REQUIRED)
1G	1419082	1G-SLA7500	BODY SIDE SEAL LOCK PLATE (2 REQUIRED)
1H	1418957	1H-SLA3500	BODY SIDE SCREW (6 REQUIRED)
2L	1419124	2L-SLA9500	BODY SEAL
4	1277294	4-SSV10500	A/R PAWL
5	1277255	5-SSV9500	PAWL SPRING
6	1277256	6-SSV9500	RETAINER CLIP
8	1419125	8-SLA9500	DRIVE GEAR (MAIN GEAR)
8A	1277146	8A-SSV7500	DRIVE GEAR SHIM WASHER
10	1419126	10-SLA9500	A/R PAWL HOLDER
11	1419088	11-SLA7500	A/R BUSHING
12	1309001	12-SSV9500	A/R BUSHING SPRING
13	1419127	13-SLA9500	CLICK GEAR

For handle components see page 3

19	1419129	19-SLA9500	PINION GEAR
19C	1419130	19C-SLA9500	PINION GEAR BUSHING (2 REQUIRED)
20A	1277152	20A-SSV7500	BALL BEARING (3 REQUIRED)
20B	1422398	20A-SLA9500	BALL BEARING
21	1419131	21-SLA9500	BALL BEARING RETAINER
21A	1277154	21A-SSV7500	RETAINER SCREW (3 REQUIRED)
21B	1419132	21B-SLA9500	PINION BALL BEARING COLLAR
21C	1385684	21C-CLA8000	BODY HEAD SEAL (O'RING)
22	1277046	22-SSV5500	ROTOR COVER SCREW
22A	1418982	22A-SLA3500	DRAG COVER SCREW (3 REQUIRED)

For bail wire / roller components see page 3

27	1419135	27-SLA9500	ROTOR
27A	1419137	27A-SLA9500	ROTOR COVER
28	1419138	28-SLA9500	ROTOR TRIP LEVER
28D	1419140	28D-SLA9500	ROTOR BRAKE (ROUND)
28E	1294662	28E-SSV10500	ROTOR BRAKE COVER
28S	1294662	28E-SSV10500	ROTOR BRAKE SCREW (2 REQUIRED)
31	1277055	31-SSV5500	BAIL ARM SCREW (2 REQUIRED)
32	1419141	32-SLA9500	BAIL SPRING
34	1385667	34-CLA8000	BAIL ARM
34C	1277164	34C-SSV7500	PIVOT ARM
38	1419103	38-SLA7500	ROTOR NUT
38E	1418958	38E-SLA3500	PINION GEAR SEAL (2 REQUIRED)
38F	1419143	38F-SLA9500	ROTOR-MAIN SHAFT SEAL

KEY	PUREFISHING PART		DESCRIPTION
NO	NO	NO.	
39	1419144	39-SLA9500	MAIN SHAFT
39A	1288190	39A-SSV9500	SPOOL ADJUST WASHER
39B	1422994	39B-SLA9500	MAIN SHAFT WASHER, METAL
43	1419145	43-SLA9500	OSCILLATION SLIDER (CROSSWIND BLOCK)
43A	1277273	43A-SSV9500	SLIDER RETAINER PLATE
43F	1419146	43F-SLA3500	GUIDE SHAFT
44	1277174	44-SSV7500	SCREW (2 REQUIRED)
45	1419147	45-SLA9500	BODY COVER ASSEMBLY
46	1277275	46-SSV9500	BODY COVER SCREW (4 REQUIRED)
47	1419149	47-SLA9500	SPOOL ASSEMBLY
47C	1419059	47C-SLA5500	DRAG COVER
47P	1419152	47P-SLA9500	SPOOL (BARE)
47S	1419154	47S-SLA9500	SPOOL SEAL
47T	1341544	47T-SSV7500LC	REAR COVER SCREW (3 REQUIRED)
47U	1418963	47U-SLA3500	DRAG COVER SEAL
47V	1419121	47V-SLA9500	SEALED NUT
47X	1419120	47X-SLA9500	DRAG COVER
48	1419155	48-SLA9500	SPOOL CLICK PLATE
48B	1419156	48B-CLA9500	SPOOL CLICKER SPRING SCREW
48D	1422400	48D-SLA9500	SPOOL CLICKER SPACER RING
49	1419157	49-SLA9500	SPOOL CLICK SPRING
49A	1418158	49A-SLA9500	SCREW, SPOOL CLICKER SPRING SCREW
52	1419159	52-SLA9500	DRAG KNOB ASSEMBLY
53S	1293252	53S-SSV5500	DRAG KNOB SEAL
56	1415388	6-T2S7-1	DRAG FRICTION WASHER
56A	1415389	6-T2S7-2	DRAG FRICTION WASHER
56T	1277089	56T-SSV5500	DRAG FRICTION WASHER
57	1419160	57-SLA9500	KEYED DRAG WASHER
57T	1419058	57T-SLA5500	KEYED DRAG WASHER
74H	1422401	74H-SLA9500	REAR BUSHING PLATE
95B	1419114	95B-SLA7500	ROTOR NUT LOCKING PLATE
98	1277190	98-SSV7500	CLUTCH/SLEEVE ASSEMBLY
117	1419162	117-SLA9500	DRAG DRIVE PLATE
225	1419164	225-SLA9400	REAR BUSHING
231	1419166	231-SLA9500	OSCILLAION GEAR (CROSSWIND GEAR)
231A	1419167	231A-SLA9500	OSCILLATION GEAR BUSHING
231B	1419168	231B-SLA9500	OSCILLATION GEAR SCREW
231C	1422489	231C-SLA9500	OSCILLATION GEAR WASHER
233A	1419169	233A-SLA9500	HANDLE CAP
233C	1419170	233C-SLA9500	HANDLE CAP SEAL

KEY PUREFISHING PART

NO NO NO DESCRIPTION

METAL KNOB HANDLE COMPONENTS			
15	1419128	15-SLA9500	HANDLE ASSEMBLY (METAL KNOB)
15E	1419072	15E-SLA5500	HANDLE KNOB (METAL)
15K	1419073	15K-SLA5500	HANDLE KNOB CAP SEAL
15P	1422397	15P-SLA9500	SUB-HANDLE ASSEMBLY
24C	1419074	24C-SLA5500	HANDLE KNOB CAP (FOR METAL KNOB)
35B	1377606	35A-BTLI8000LC	KNOB BALL BEARING (2 REQUIRED) REV 02
46T	1341500	3-SSV7500LC	SCREW

KEY PUREFISHING PART

NO NO NO DESCRIPTION

FOAM KNOB HANDLE COMPONENTS			
15			FOAM HANDLE NOT AVAILABLE PRE-ASSEMBLED
15Q	1418255	15E-CLA6000	HANDLE KNOB (FOAM)
15L	1417804	15L-CLA2000	HANDLE KNOB SEAL
15P	1422397	15P-SLA9500	SUB-HANDLE ASSEMBLY
24D	1417808	24C-CLA5000	HANDLE KNOB CAP (FOR FOAM KNOB)
35B	1377606	35A-BTLI8000LC	KNOB BALL BEARING (2 REQUIRED) REV 02
46T	1341500	3-SSV7500LC	SCREW

BAIL WIRE, LINE ROLLER PARTS CHANGED FOR REV 02

ORIGINAL W/JUST BUSHINGS Rev 00

24	1419133	24-SLA9500	BAIL WIRE
35	1277165	35-SSV7500	LINE ROLLER
35A	1419050	35A-SLA5500	LINE ROLLER BUSHING
132	1419163	132-SLA9500	LINE ROLLER COLLAR
132A	1422388	132A-SLA9500	LINE ROLLER WASHER
36	1422399	36-SLA9500	LINE ROLLER SCREW
36B	1417809	36B-CLA6000	BAIL ARM SCREW WASHER
25	1385663	25-CLA8000	BAIL HOLDER

*REV0 shows the above older system
so it is still being noted here*

NEWER W/BALL BEARING/BUSHING COMBO Rev 02

24	1474160	24-SLAiii9500	BAIL WIRE
35	1457805	35-SLAiii8500HS	LINE ROLLER
35A	1457806	35A-SLAiii8500HS	LINE ROLLER BUSHING
35B	1377606	35A-BTLI8000LC	LINE ROLLER BALL BEARING (1 REQUIRED)
132	1457807	132-SLAiii8500HS	LINE ROLLER COLLAR
NO 132A ON THE NEWER SETUP			
36	1422399	SAME PART	
36B	1417809	SAME PART	
25	1385663	SAME PART	

CORRECTIONS:

35B	1377606	35A-BTLI8000LC	KNOB BALL BEARING (2 REQUIRED) REV 02 use this one!!!
35B	1277060	35A-SSV5500	BALL BEARING (2 REQUIRED) ---- DIFFERENT NUMBER ON REV 00

MYSTIC REEL PARTS REVISION!

NOTE:

Many of www.mysticparts.com schematics include changes that were either made by Penn, or errors found and corrected by our parts dept.
MRP Ver 010120 (based on Penn's Rev. 01 07-01-17)