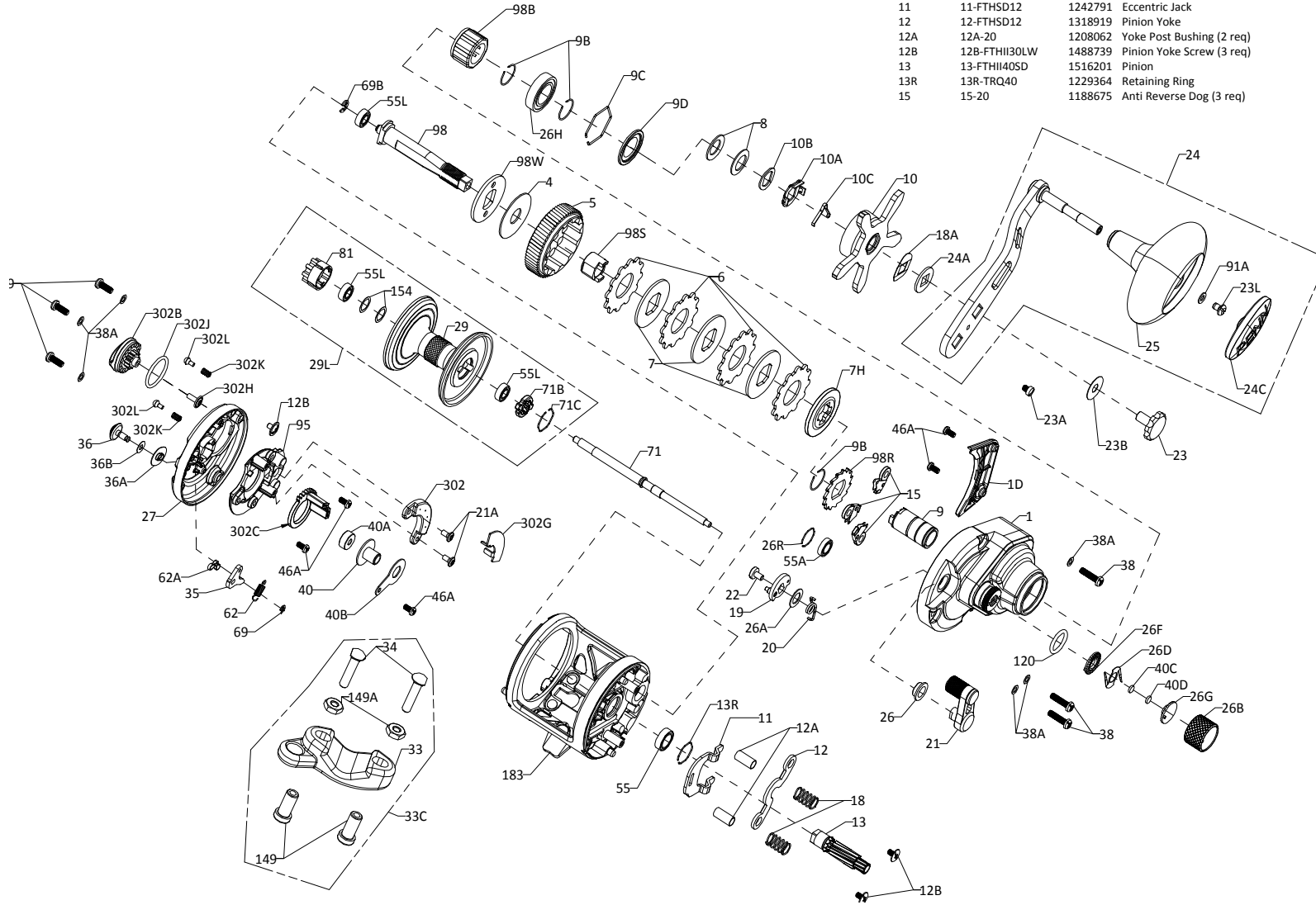




PARTS LIST FATHOM II 12SD and 15SD

REEL PART NO. 1505232(12SD) and 1505233(15SD)



Key No.	Penn Style No.	Part No.	Description	Key No.	Penn Style No.	Part No.	Description
1	1-FTHII12SD	1516067	Right Side Plate Assembly	18	18-20	1188688	Pinion Yoke Spring (2 req)
1	1-FTHII15SD	1516146	Right Side Plate Assembly	18A	18A-20	1188714	Keyed Spring Washer
1D	1D-FTHII15SD	1516145	Gearbox Cover	19	19-20	1188691	Eccentric
4	4-FTHII30LW	1488726	Drag Washer	20	20-FTHSD12	1242806	Eccentric Spring
5	5-FTHII40SD	1516199	Main Gear	21	21-FTHII20LW	1488792	Eccentric Lever (Gunsmoke)
6	6-TRQ40	1237037	Drag Washer Tab (4 req)	21A	21A-420G	1214652	Screw (2 req)
7	7-FTHII12SD	1516068	Keyed Metal Drag Washer (3 req)	22	22-20	1188690	Eccentric Screw
7H	7H-FTHII12SD	1516139	Heavy Metal Drag Washer	23	23-FTH20LW	1208117	Handle Screw
8	8-20	1188709	Spring Washer (2 req)	23A	23A-20	1188717	Handle Lock Screw
9	9-FTHII40SD	1516200	Spacer Sleeve	23B	23B-20	1207784	Handle Screw Washer
9B	9B-FTHII30LW	1488732	Retainer Ring (3 req)	23L	23L-750	1191283	Screw
9C	9C-FTHII30LW	1488733	Retainer Ring	24	24-FTHII40SD	1518692	Handle Assembly
9D	9D-FTHII30LW	1488734	Bearing Cover	24A	24A-20	1188715	Handle Thrust Washer
10	10-FTHII30LW	1488735	Star Drag (Gunsmoke)	24C	24C-66	1191335	Cap- Handle Knob
10A	10A-20	1188711	Star Click Retainer	25	25-TRQ40	1240293	Handle Knob
10B	10B-20	1188710	Star Click Washer	26	26-20	1188692	Bushing
10C	10C-525MAG2	1188712	Star Click Spring	26A	26A-FTHSD12	1242792	Washer
11	11-FTHSD12	1242791	Eccentric Jack	26B	26B-FTHII30LW	1488746	Spool Tension Knob (Gunsmoke)
12	12-FTHSD12	1318919	Pinion Yoke	26D	26D-525MAG2	1125769	Click Spring
12A	12A-20	1208062	Yoke Post Bushing (2 req)	26F	26F-525MAG2	1125768	Click Plate A
12B	12B-FTHII30LW	1488739	Pinion Yoke Screw (3 req)	26G	26G-525MAG2	1125772	Click Plate B
13	13-FTHII40SD	1516201	Pinion	26H	26-TRQ40NLD2	1265023	Ball Bearing
13R	13R-TRQ40	1229364	Retaining Ring	26R	26R-525MAG2	1214654	Ring Retaining
15	15-20	1188675	Anti Reverse Dog (3 req)	27	27-FTHII12SD	1516140	Left Side Plate Assembly
				27	27-FTHII15SD	1516147	Left Side Plate Assembly
				29	29-FTHII12SD	1516141	Spool (Gunsmoke/Gold)
				29	29-FTHII15SD	1516148	Spool (Gunsmoke/Gold)
				29L	29L-FTHII12SD	1516142	Spool Assembly
				29L	29L-FTHII15SD	1516149	Spool Assembly
				33	33-113	1182754	Rod Clamp
				33C	33C-TRQ40	1229936	Rod Clamp Kit
				34	34-45	1182788	Screw, Rod Clamp (2 req)
				35	35-FTHII15SD	1516150	Alarm Pawl
				36	36-FTHII15SD	1516151	Click Button
				36A	36A-FTH20LW	1208113	Click Washer
				36B	36B-20	1188651	Washer
				38	38-20	1188698	Screw (3 req)
				38A	38A-20	1188649	Flat Washer (6 req)
				39	39-20	1188638	Screw (3 req)
				40	40-FTHII15SD	1516206	Bushing L. S. Spool
				40A	40A-FTHSD12	1242804	Bearing
				40B	40B-FTHII15SD	1516152	Protector Bearing
				40C	40C-525MAG2	1208115	Washer, Friction
				40D	40D-525MAG2	1125771	Washer, Rubber Thrust
				46A	46A-FTHII30LW	1488755	Cover Plate Screw (5 req)
				55	55-525MAG2	1214665	Ball Bearing
				55A	55A-525MAG2	1214666	Ball Bearing
				55L	55L-965	1192031	Bearing Spool (3 req)
				62	62-910	1184031	Spring, Click
				62A	62A-FTHII15SD	1516153	Alarm Button Spring
				69	69-20	1188657	Retainer
				69B	69B-600	1184129	Ring Retaining
				71	71-FTHII12SD	1516143	Spindle
				71	71-FTHII15SD	1516154	Spindle
				71B	71B-FTHII30SD	1516190	Spool Driver
				71C	71C-TRQ40	1230227	Retaining Ring
				81	81-TRQ40	1230303	Ratchet Click
				91A	91A-TRQ40NLD2	1277514	Handle Knob Washer
				95	95-FTHII15SD	1516155	Housing
				98	98-FTHII40SD	1516208	Main Gear Shaft
				98B	98B-FTHII30LW	1488764	IAR Bearing
				98R	98R-FTHII30LW	1488765	Ratchet
				98S	98S-FTHII40SD	1516209	Gear Stud Bushing
				98W	98W-FTHII30LW-1	1516218	Thrust Washer
				120	120-113H	1184522	O-Ring
				149	149-45	1184702	Rod Clamp Nut (2 req)
				149A	149-200	1184706	Hex Nut (2 req)
				154	154-FTHSD12	1242803	Shim (As Needed)
				183	183-FTHII12SD	1516144	Frame Assembly
				183	183-FTHII15SD	1516156	Frame Assembly
				302	302-525MAG2	1214681	Assembly, Magnet Housing
				302B	302B-525MAG2	1214682	Dial, Brake Adjustment
				302C	302C-525MAG2	1214683	Carrier, Magnet Shield
				302G	302G-525MAG2	1214684	Shield, Adjustable Magnet
				302H	302H-525MAG2	1214685	Screw
				302J	302J-525MAG2	1214686	O-Ring
				302K	302K-FTHII15SDCS	1517589	Mag Dial Click Spring (2 req)
				302L	302L-FTHII15SDCS	1516167	Mag Dial Plunger (2 req)