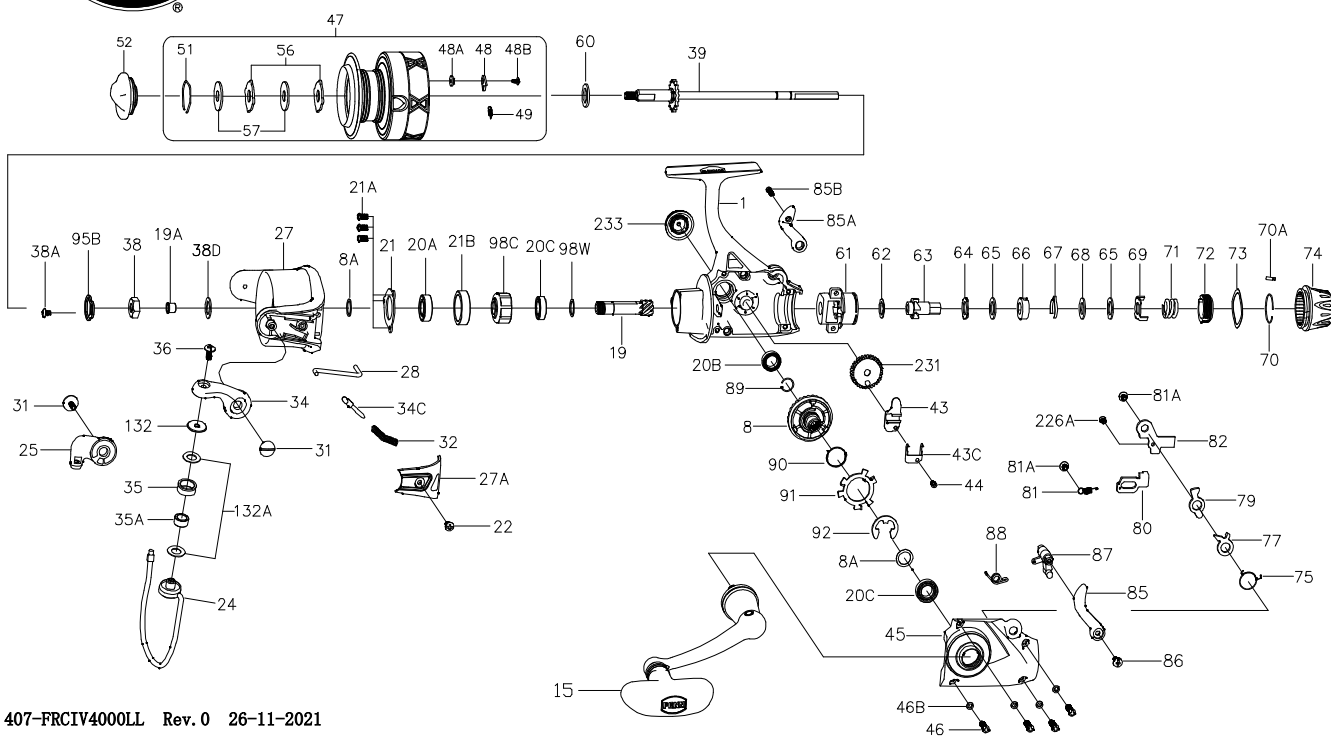




**PARTS LIST FOR MODEL FRCIV4000LL**



KEY NO.	PART NO.	PENN STYLE NO.	DESCRIPTION
46B	1191907	46B-3000SG	Housing Cover Washer(4 req)
47	1577494	47-FRCIV4000LL	Spool Assembly
48	1211604	48-3000SG	Click Tongue
48A	1214226	48A-3000SG	Click Tongue Washer
48B	1214189	48B-3000SG	Spool Click Screw
49	1211605	49-3000SG	Click Tongue Spring
51	1308078	51-CFT3000	Drag Retaining Ring
52	1514314	52-FRCIII3000	Drag Knob Assembly
56	1308080	56-CFT3000	Drag Washer (2 req)
57	1192043	57-3000SG	Keyed Washer (2 req)
60	1192060	60-3000SG	Thrust Washer
61	1371357	61-FRCII4000LL	Rear Drag Bracket
62	1371358	62-FRCII4000LL	Washer
63	1371359	63-FRCII4000LL	Ratchet
64	1371360	64-FRCII4000LL	Eared Washer
65	1371361	65-FRCII4000LL	Friction Washer (2 req)
66	1371362	66-FRCII4000LL	Click Spring Sleeve
67	1371363	67-FRCII4000LL	Click Spring
68	1371364	68-FRCII4000LL	Keyed Drag Washer
69	1371365	69-FRCII4000LL	Eared Washer
70	1371366	70-FRCII4000LL	Retaining Ring
70A	1371367	70A-FRCII4000LL	Click Pin
71	1371368	71-FRCII4000LL	Rear Drag Spring
72	1371369	72-FRCII4000LL	Drag Sleeve
73	1371370	73-FRCII4000LL	Spring Washer
74	1371371	74-FRCII4000LL	Rear Drag
75	1371372	75-FRCII4000LL	Release Pawl Spring
77	1371373	77-FRCII4000LL	Release Pawl
79	1371374	79-FRCII4000LL	Return Pawl
80	1371375	80-FRCII4000LL	N-R Pawl
81	1371376	81-FRCII4000LL	N-R Pawl Spring
81A	1324171	38A-BTLII4000	Screw(2 req)
82	1371378	82-FRCII4000LL	Retaining Plate
85	1371379	85-FRCII4000LL	Left Lever
85A	1371380	85A-FRCII4000LL	Right Lever
85B	1371381	85B-FRCII4000LL	Screw
86	1251748	36-1000FRC	Bail Stud Screw
87	1371383	87-FRCII4000LL	Lever Bar
88	1371384	88-FRCII4000LL	Lever Spring
89	1371385	89-FRCII4000LL	Retaining Ring
90	1371386	90-FRCII4000LL	Release Spring
91	1371387	91-FRCII4000LL	Release Plate
92	1371388	92-FRCII4000LL	Retaining Washer
95B	1308081	95B-CFT3000	Rotor Locking Plate
98C	1308082	98C-CFT3000	Clutch/Sleeve Assembly
98W	1204004	98W-3000PUR	Clutch Washer
132	1192296	132-3000SG	Roller Washer
132A	1192302	132A-3000SG	Line Roller Washer (2 req)
132A	1192473	226A-3000SG	Rear Cover Screw
226A	1192473	226A-3000SG	Rear Cover Screw
231	1200522	231-4000SG	Crosswind Gear
233	1514304	233-FRCIII1000	Bearing Cover Assy

407-FRCIV4000LL Rev.0 26-11-2021

1558717

KEY NO.	PART NO.	PENN STYLE NO.	DESCRIPTION	KEY NO.	PART NO.	PENN STYLE NO.	DESCRIPTION
1	1577493	1-FRCIV4000LL	Housing Assembly	27A	1308060	27A-CFT4000	Bail Pivot Cover
8	1371350	8-FRCII4000LL	Main Gear	28	1308062	28-CFT4000	Trip Lever
8A	1191028	8A-3000SG	Shim(2 req)	31	1308063	31-CFT3000	Bail Arm Screw (2 req)
15	1578468	15-FRCIV3000	Handle Assembly	32	1191586	32-3000SG	Bail Spring
19	1191231	19-3000SG	Pinion Gear	34	1308064	34-CFT3000	Bail Arm
19A	1191252	19A-3000SG	Pinion Bushing	34C	1308065	34C-CFT3000	Pivot Arm
20A	1308051	20A-CFT3000	Upper Pinion Ball Bearing	35	1308066	35-CFT3000	Line Roller
20B	1203974	20B-3000PUR	Ball Bearing	35A	1308067	35A-CFT3000	Line Roller Bushing
20C	1203975	20C-3000PUR	Ball Bearing (2 req)	36	1191699	36-3000SG	Bail Stud Screw
21	1308052	21-CFT3000	Bearing Retainer	38	1191728	38-3000SG	Rotor Nut
21A	1192644	21A-3000SG	Bearing Retainer Screw (3 req)	38A	1308069	38A-CFT3000	Rotor Locking Plate Screw
21B	1308053	21B-CFT3000	Collar	38D	1308070	38D-CFT3000	Rotor Nut Washer
22	1203997	43B-3000PUR	Screw	39	1371351	39-FRCII4000LL	Main Shaft Assembly
24	1308055	24-CFT4000	Bail Wire	43	1371352	43-FRCII4000LL	Crosswind Block
25	1308056	25-CFT3000	Bail Holder	43C	1371353	43C-FRCII4000LL	Main Shaft Holder
27	1524122	27-FRCIII4000	Rotor	44	1371354	44-FRCII4000LL	Crosswind Block Screw
				45	1514572	45-FRCIII4000LL	Housing Cover Assy
				46	1371356	46-FRCII4000LL	Housing Cover Screw (4 req)