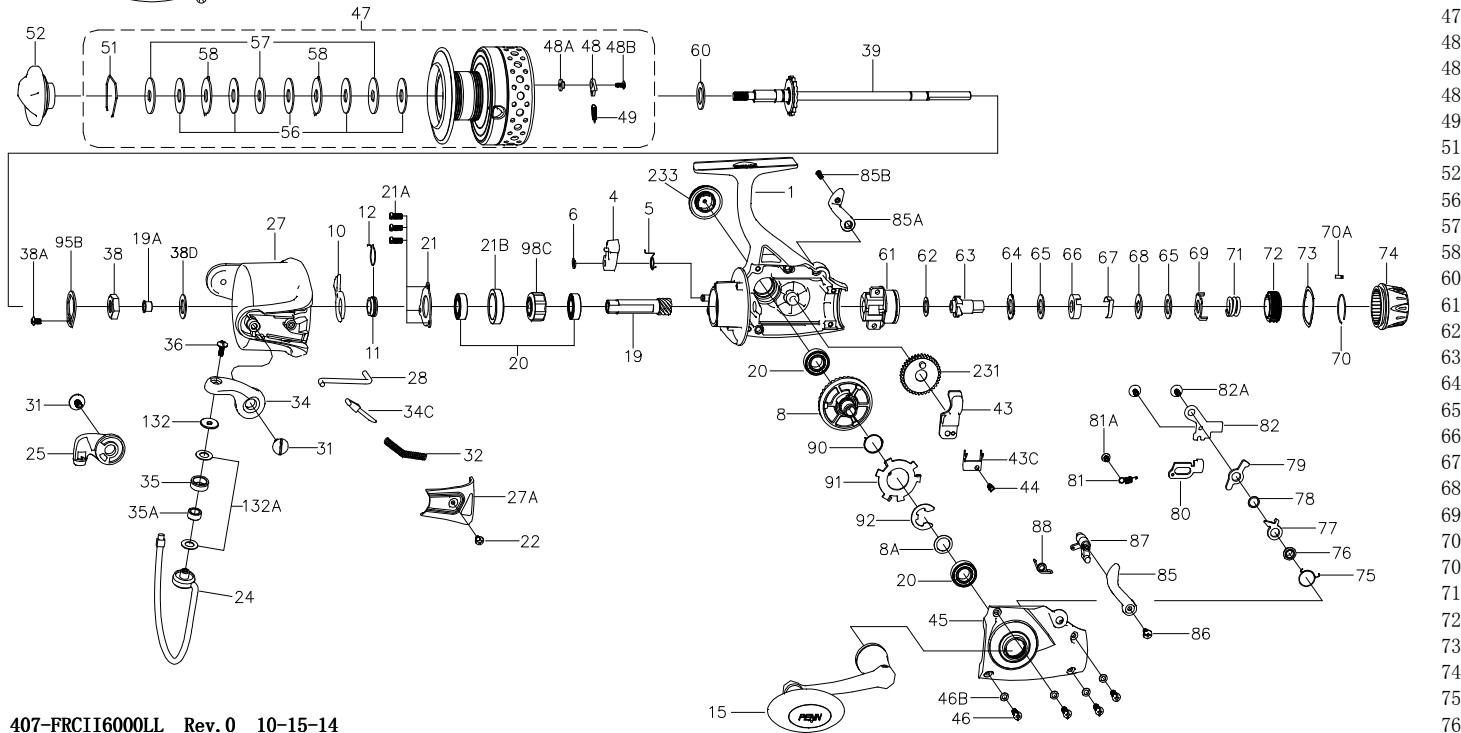




PARTS LIST FOR MODEL FRCII6000LL



KEY NO.	PART NO.	DESCRIPTION
46	1371701	46-FRCII6000LL Housing Cover Screw (4 req)
46B	1191908	46B-5000SG Housing Cover Washer (4 req)
47	1371437	47-FRCII6000LL Spool Assembly
48	1211625	48-5000SG Click Tongue
48A	1211626	48A-5000SG Click Tongue Washer
48B	1211612	48B-5000SG Spool Click Screw
49	1211627	49-5000SG Click Tongue Spring
51	1308112	51-CFT5000 Drag Retaining Ring
52	1365744	52-FRCII6000 Drag Knob Assembly
56	1192036	56-5000SG Drag Washer (5 req)
57	1192044	57-5000SG Keyed Washer (3 req)
58	1192053	58-5000SG Eared Washer (2 req)
60	1192062	60-5000SG Thrust Washer
61	1371396	61-FRCII6000LL Rear Drag Bracket
62	1371397	62-FRCII6000LL Washer
63	1371398	63-FRCII6000LL Ratchet
64	1371399	64-FRCII6000LL Eared Washer
65	1371400	65-FRCII6000LL Friction Washer (2 req)
66	1371401	66-FRCII6000LL Click Spring Sleeve
67	1371402	67-FRCII6000LL Click Spring
68	1371403	68-FRCII6000LL Keyed Drag Washer
69	1371404	69-FRCII6000LL Eared Washer
70	1371405	70-FRCII6000LL Retaining Ring
70A	1371406	70A-FRCII6000LL Click Pin
71	1371407	71-FRCII6000LL Rear Drag Spring
72	1371408	72-FRCII6000LL Drag Sleeve
73	1371409	73-FRCII6000LL Spring Washer
74	1371410	74-FRCII6000LL Rear Drag
75	1371372	75-FRCII4000LL Release Pawl Spring
76	1371411	76-FRCII6000LL Release Pawl Stud
77	1371412	77-FRCII6000LL Release Pawl
78	1371413	78-FRCII6000LL Washer
79	1371414	79-FRCII6000LL Return pawl
80	1371415	80-FRCII6000LL N-R Pawl
81	1371376	81-FRCII4000LL N-R Pawl Spring
81A	1371377	81A-FRCII4000LL Screw
82	1371416	82-FRCII6000LL Retaining Plate
82A	1371417	82A-FRCII6000LL Screw (2 req)
85	1371379	85-FRCII4000LL Left Lever
85A	1371380	85A-FRCII4000LL Right Lever
85B	1371381	85B-FRCII4000LL Screw
86	1371382	86-FRCII4000LL Screw
87	1371383	87-FRCII4000LL Lever Bar
88	1371418	88-FRCII6000LL Lever Spring
90	1371386	90-FRCII4000LL Release Spring
91	1371419	91-FRCII6000LL Release Plate
92	1371420	92-FRCII6000LL Retaining Washer
95B	1308115	95B-CFT5000 Rotor Locking Plate
98C	1308116	98C-CFT5000 Clutch/Sleeve Assembly
132	1192297	132-5000SG Roller Washer
132A	1192302	132A-3000SG Line Roller Washer (2 req)
231	1200523	231-6000SG Crosswind Gear
233	1214209	233-5000FRC Bearing Cover Assembly

407-FRCII6000LL Rev. 0 10-15-14

1364050

KEY NO.	PART NO.	DESCRIPTION	KEY NO.	PART NO.	DESCRIPTION
1	1371389	1-FRCII6000LL Housing Assembly	22	1204018	22-6000PUR Bail Pivot Cover Screw
4	1190937	4-5000SG Dog	24	1365746	24-FRCII6000 Bail Wire
5	1190966	5-5000SG Dog Spring	25	1308093	25-CFT5000 Bail Holder
6	1190979	6-5000SG Retaining Clip	27	1365747	27-FRCII6000 Rotor
8	1371390	8-FRCII6000LL Main Gear	27A	1365748	27A-FRCII6000 Bail Pivot Cover
8A	1191030	8A-5000SG Shim	28	1365749	28-FRCII6000 Trip Lever
10	1191066	10-5000SG A/R Holder	31	1365740	31-FRCII5000 Bail Arm Screw (2 req)
11	1191085	11-5000SG Bushing	32	1200520	32-6000SG Bail Spring
12	1313865	12-CFT8000 A/R Bushing Spring	34	1308103	34-CFT6000 Bail Arm
15	1365735	15-FRCII5000 Handle Assembly	34C	1191652	34C-5000SG Pivot Arm
19	1364030	19-BTLII5000 Pinion Gear	35	1308066	35-CFT3000 Line Roller
19A	1191253	19A-5000SG Pinion Bushing	35A	1308067	35A-CFT3000 Line Roller Bushing
20	1204012	20-5000PUR Ball Bearing (4 req)	36	1191699	36-3000SG Bail Stud Screw
21	1192636	21-5000SG Bearing Retainer	38	1191729	38-5000SG Rotor Nut
21A	1192645	21A-5000SG Bearing Retainer Screw (3 req)	38A	1365741	38A-FRCII5000 Screw
21B	1324209	21B-BTLII5000 Collar	38D	1308104	38D-CFT5000 Rotor Nut Washer
			39	1371391	39-FRCII6000LL Main Shaft Assembly
			43	1371392	43-FRCII6000LL Crosswind Block
			43C	1371393	43C-FRCII6000LL Main Shaft Holder
			44	1371394	44-FRCII6000LL Crosswind Block Screw
			45	1371395	45-FRCII6000LL Housing Cover Assembly