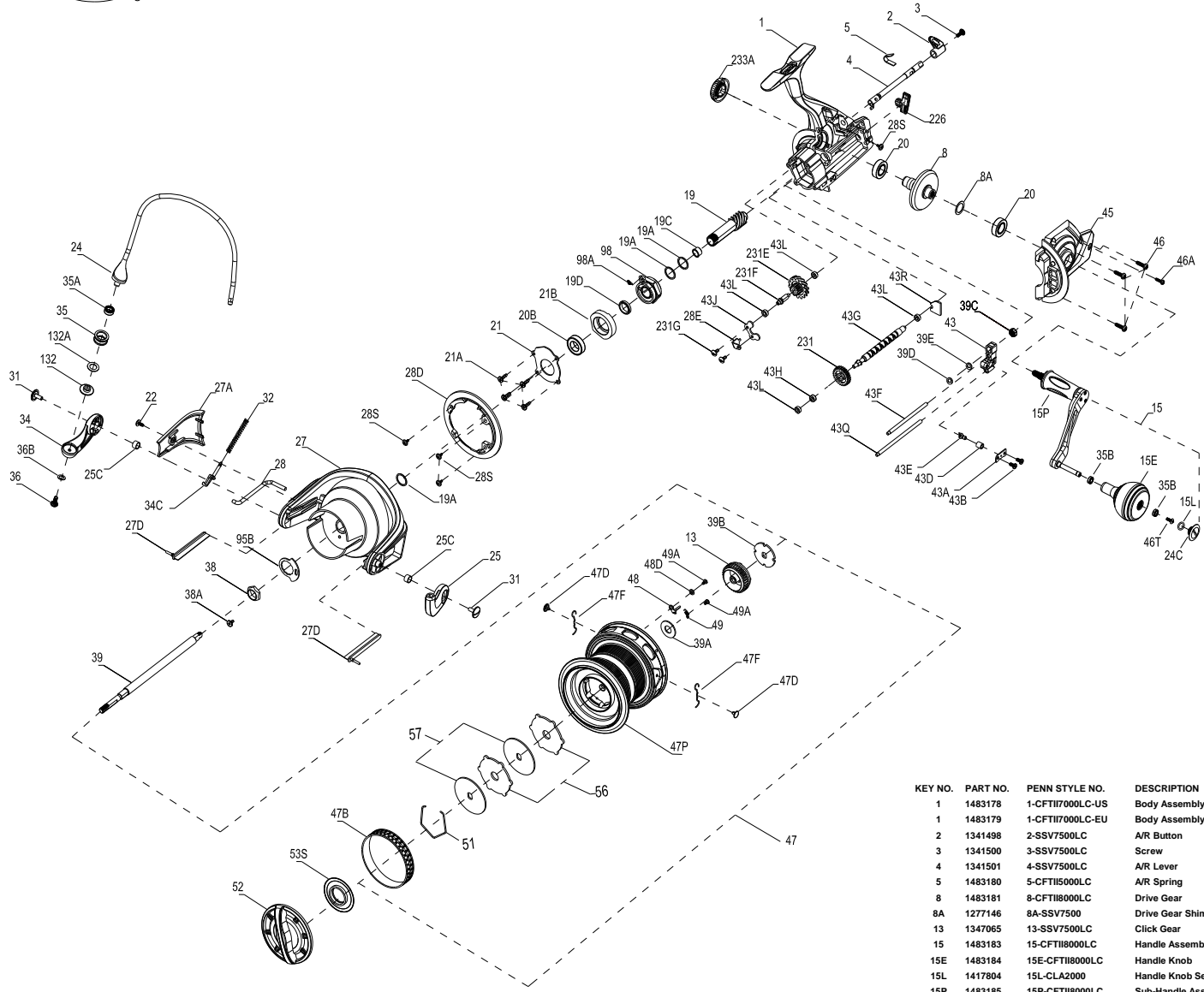




PARTS LIST FOR CFTII7000LC-US / CFTII7000LC-EU



KEY NO.	PART NO.	PENN STYLE NO.	DESCRIPTION
21B	1341511	21B-SSV7500LC	Pinion Bearing Collar
22	1125962	231G-7000AF	Screw
24	1483187	24-CFTII7000LC	One Piece Bail
24C	1417808	24C-CLA5000	Handle Knob Cap
25	1385663	25-CLA8000	Bail Holder
25C	1377596	25C-BTLI8000LC	Bushing
27	1483188	27-CFTII7000LC	Rotor
27A	1483189	27A-CFTII7000LC	Rotor Cover
27D	1483190	27D-CFTII7000LC	Line Guard
28	1483191	28-CFTII7000LC	Rotor Trip Lever
28D	1483192	28D-CFTII7000LC	Rotor Brake
28E	1341520	28E-SSV7500LC	Brake Retainer Plate
28S	1377602	28S-BTLI8000LC	Screw
28S	1277054	28S-SSV5500	Screw
31	1122116	31-BTLI8000LC	Screw
32	1419102	32-SLA7500	Bail Spring
34	1385667	34-CLA8000	Bail Arm
34C	1277164	34C-SSV7500	Pivot Arm
35	1483224	35-CFTII8000LC	Line Roller
35A	1483225	35A-CFTII5000	Line Roller Bushing
35B	1418393	35B-CLA3000	Bail Bearing
36	1422399	36-SLA9500	Line Roller Screw
36B	1417809	36B-CLA6000	Bail Arm Screw Washer
38	1385668	38-CLA8000	Rotor Nut
38A	1378050	38A-BTLI7000LC	Screw
39	1483195	39-CFTII7000LC-US	Main Shaft
39	1483196	39-CFTII7000LC-EU	Main Shaft
39A	1341524	39A-SSV7500LC	Spool Adjust Washer
39B	1341525	39B-SSV7500LC	Main Shaft Washer
39C	1259637	39C-7000AF	Main Shaft Nut
39D	1483228	39D-CFTII8000LC	Rubber Pad
39E	1483229	39E-CFTII8000LC	Fixing Plate
43	1259636	43-AF8000LC	Worm O/S Slider
43A	1259635	43A-7000AF	Slider Retainer Plate
43B	1276992	43B-SSV6500LL	Screw
43D	1122193	43D-7000AF	Guide Claw Bushing
43E	1122192	43E-7000AF	Guide Claw
43F	1259623	43F-AF8000LC	Right Guide Shaft
43G	1483199	43G-CFTII7000LC	Worm Shaft
43H	1377609	43H-BTLI8000LC	Bail Bearing
43J	1259620	43J-7000AF	Top Retainer Plate
43L	1341533	43L-SSV7500LC	Bushing
43Q	1259626	43Q-AF8000LC	Left Guide Shaft
43R	1259627	43R-AF8000LC	Rear Retainer Plate
45	1483200	45-CFTII7000LC	Body Cover Assembly
46	1377611	46-BTLI8000LC	Screw
46A	1447884	46-CFTII3000	Screw
46T	1341500	3-SSV7500LC	Screw
47	1483201	47-CFTII7000LC	Spool Assembly
47B	1341538	47B-SSV7500LC	Spool Band
47D	1483213	47D-CFTII8000LC	Line Clip
47F	1259575	47F-7000AF	Line Clip Spring
47P	1483243	47P-CFTII7000LC-US	Spool
47P	1483203	47P-CFTII7000LC-EU	Spool
48	1259577	13-7000AF	Spool Click Plate
48D	1341546	48D-SSV7500LC	Spool Clicker Spring Ringer
49	1259579	49-7000AF	Spool Click Spacer
49A	1341547	49A-SSV7500LC	Screw
51	1378418	51-BTLI7000LC	Drag Washer Retainer
52	1483235	52-CFTII8000LC-US	Drag Knob Assembly
52	1483236	52-CFTII8000LC-EU	Drag Knob Assembly
53S	1483237	53S-CFTII8000LC	Drag Knob Seal
56	1341550	56-SSV7500LC	Drag Friction Washer
57	1341551	57-SSV7500LC	Keyed Drag Washer
95B	1277189	95B-SSV7500	Rotor Nut Locking Plate
98	1259618	98-7000AF	One Way Clutch Bearing Assembly
98A	1361930	98A-SSV7500LC	Clutch Assembly Spring
132	1483238	132-CFTII8000LC	Line Roller Collar
132A	1277097	132A-SSV5500	Line Roller Washer
226	1483208	226-CFTII7000LC	Rear Cover
231	1259624	231-AF8000LC	O/S Gear
231E	1259622	231E-7000AF	Slow O/S Gear
231F	1259621	231F-7000AF	Slow O/S Gear Pin
231G	1125962	231G-7000AF	Screw
233A	1339570	233A-CLA5000	Handle Cap Assembly

407-CFTII7000LC Rev.00 28-11-2017
 1481287--CFTII7000LC-US
 1481288--CFTII7000LC-EU