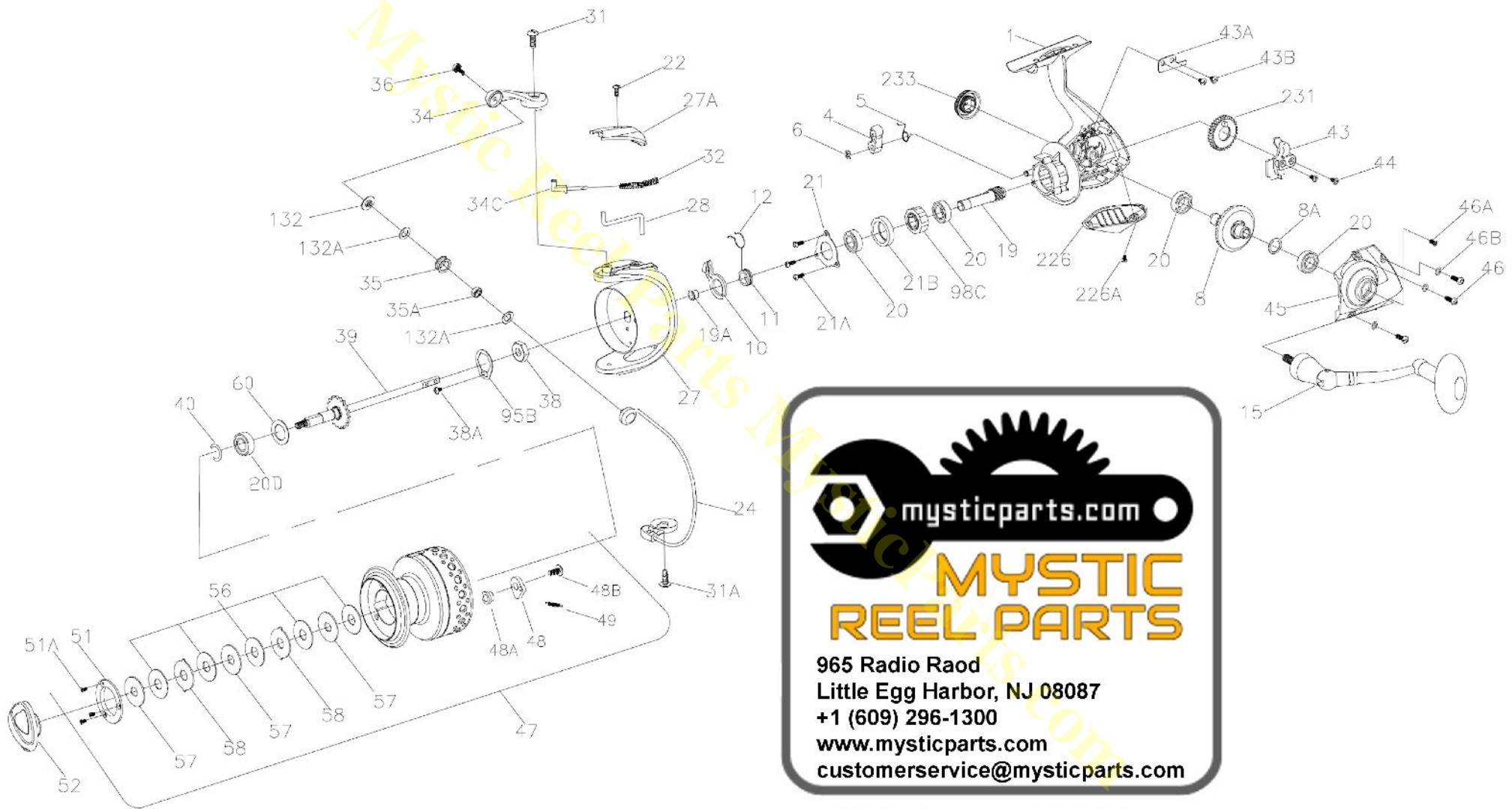




# PARTS LIST FOR MODELS BTL6000



MRP Ver. 120410  
(based on Penn's Rev.1 - 4/21/10)

Penn Reel Parts list for:

Model: BTL6000 Battle Spinning Series

KEY NO	PureFishing Part #	Penn Part NO.	DESCRIPTION	KEY NO	PureFishing Part #	Penn Part NO.	DESCRIPTION
1	1211648	1-6000BTL	HOUSING	40	1211620	40-5000BTL	BEARING LOCK SPRING
4	1190937	4-5000SG	A/R DOG	43	1191805	43-5000SG	CROSSWIND BLOCK
5	1190966	5-5000SG	A/R DOG SPRING	43A	1191820	43A-5000SG	CROSSWIND BLOCK PLATE
6	1190979	6-5000SG	RETAINING CLIP	43B	1191827	43B-5000SG	CROSSWIND BLOCK PLATE SCREW
8	1191019	8-5000SG	MAIN GEAR ASSEMBLY	44	1191845	44-5000SG	CROSSWIND BLOCK SCREW
8A	1204063	8A-7000PUR	MAIN GEAR SHIM	45	1211621	45-5000BTL	HOUSING COVER
10	1191066	10-5000SG	A/R HOLDER	46	1191903	46-5000SG	HOUSING COVER SCREW (3 REQUIRED)
11	1191085	11-5000SG	BUSHING	46A	1191906	46A-3000SG	HOUSING COVER SCREW A
12	1191090	12-5000SG	A/R BUSHING SPRING	46B	1191908	46B-5000SG	HOUSING COVER WASHER (3 REQUIRED)
15	1211609	15-5000BTL	HANDLE ASSEMBLY	47	1211624	47-6000BTL	SPOOL ASSEMBLY
19	1191240	19-5000SG	PINION GEAR	48	1211625	48-5000SG	CLICK TONGUE
19A	1191253	19A-5000SG	PINION BUSHING	48A	1211626	48A-5000SG	CLICK TONGUE WASHER
20	1192613	20-5000SG	BALL BEARING (4 REQUIRED)	48B	1211612	48B-5000SG	SPOOL CLICK SCREW
20D	1211610	20D-5000BTL	SPOOL BALL BEARING	49	1211627	49-5000SG	CLICK TONGUE SPRING
21	1192636	21-5000SG	BEARING RETAINER	51	1204057	51-5000PUR	RETAINING SPACER
21A	1192645	21A-5000SG	BEARING RETAINER SCREW (3 REQUIRED)	51A	1191986	51A-3000SG	RETAINING SCREW (3 REQUIRED)
21B	1192650	21B-5000SG	COLLAR	52	1211628	52-5000BTL	DRAG KNOB
22	1192661	22-5000SG	BAIL ARM COVER SCREW	56	1211630	56-5000BTL	DRAG WASHER HT100 (5 REQUIRED)
27	1211616	27-6000BTL	ROTOR CUP	57	1192044	57-5000SG	KEYED DRAG WASHER (3 REQUIRED)
27A	1200071	27A-6000SG	BAIL PIVOT COVER	58	1192053	58-5000SG	EARRED DRAG WASHER (2 REQUIRED)
28	1191489	28-6000SG	TRIP LEVER	60	1211629	60-5000BTL	THRUST WASHER
31	1191569	31-5000SG	BAIL ARM SCREW	95B	1192186	95B-5000SG	ROTOR LOCKING PLATE
31A	1191575	31A-5000SG	BAIL CAM SCREW	98C	1192215	98C-5000SG	CLUTCH/SLEEVE ASSEMBLY
32	1200520	32-6000SG	BAIL SPRING	132	1192297	132-5000SG	ROLLER WASHER
34	1200521	34-6000SG	BAIL ARM	132A	1192302	132A-3000SG	LINE ROLLER WASHER
34C	1191652	34C-5000SG	PIVOT ARM	226	1192460	226-5000SG	REAR COVER
36	1191703	36-5000SG	BAIL STUD SCREW	226A	1192473	226A-3000SG	REAR COVER SCREW
38	1191729	38-5000SG	ROTOR NUT	231	1200523	231-6000SG	CROSSWIND GEAR
38A	1191736	38A-5000SG	ROTOR LOCKING PLATE SCREW	233	1211631	233-5000BTL	BEARING COVER
39	1211619	39-6000BTL	SPOOL SHAFT				

**MYSTIC REEL PARTS REVISION!**

NOTE:

Many of [www.mysticparts.com](http://www.mysticparts.com) schematics include changes that were either made by Penn, or errors found and corrected by our parts dept.

MRP Ver. 012613 (based on Penn's 407-5000BTL Rev. 2 - 05-23-11)

**DESIGN CHANGE:**

Early BTL Parts

24	1211614	24-6000BTL	BAIL WIRE
35	1203991	35-3000PUR	LINE ROLLER
35A	1191683	35A-3000SG	LINE ROLLER BEARING (O.D. 5/16")

Later BTL Parts

24	1242248	24N-6000BTL	BAIL WIRE
35	1242221	35-5000BTL	LINE ROLLER
35A	1242222	35A-5000BTL	LINE ROLLER BEARING (O.D. 6/16")