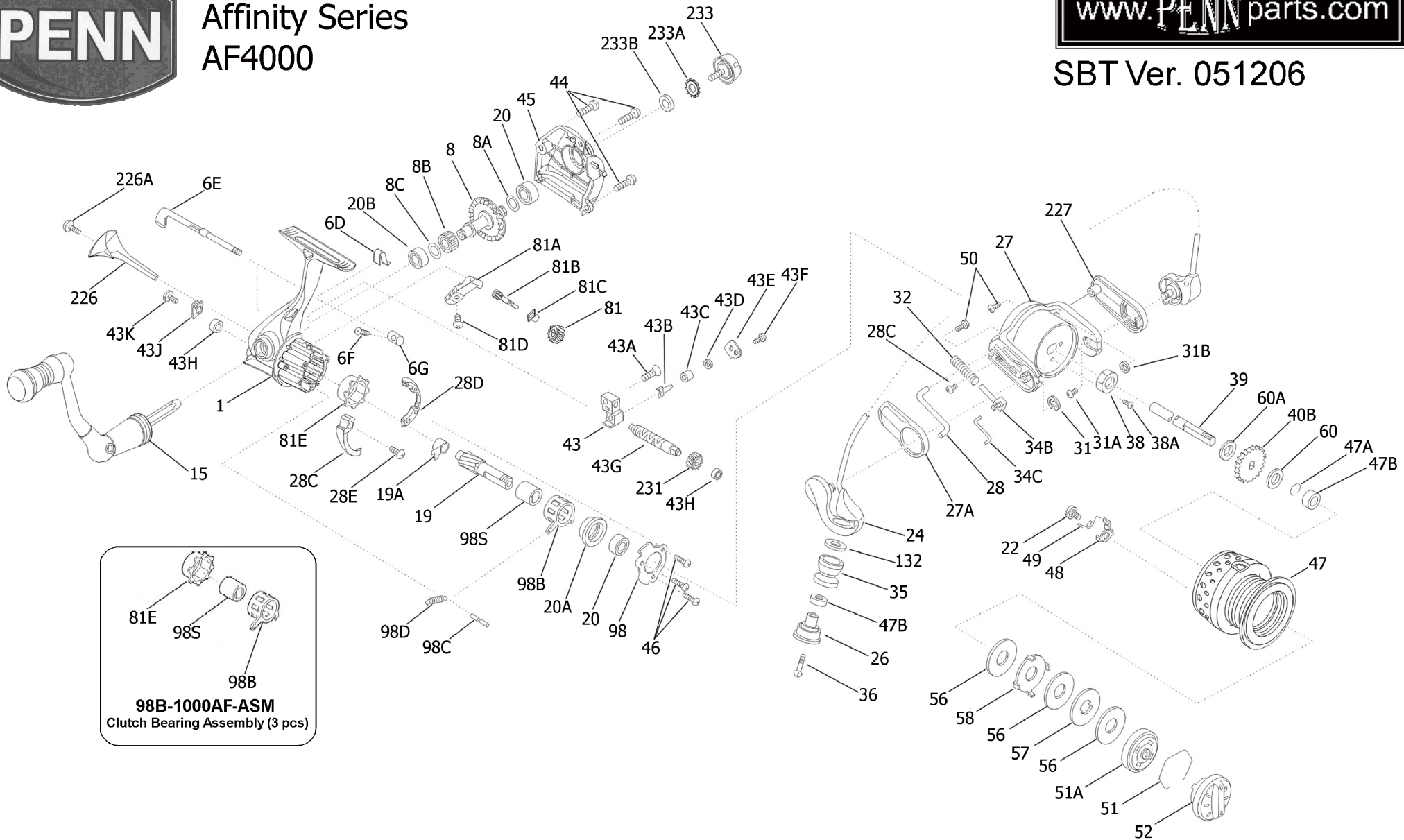


PENN

Affinity Series AF4000

www.PENNparts.com

SBT Ver. 051206



81E
98S
98B

98B-1000AF-ASM
Clutch Bearing Assembly (3 pcs)

Penn Reel Parts list for:

Model: AF4000 AFFINITY SERIES

KEY PART			KEY PART		
NO	NO.	DESCRIPTION	NO	NO.	DESCRIPTION
1	1-3000AF	HOUSING ASSEMBLY	43E	43E-3000AF	CROSWIND BLOCK PLATE
6D	6D-3000AF	ANTI-REVERSE SHAFT SPRING	43F	43F-1000AF	PLATE SCREW
6E	6E-3000AF	ANTI-REVERSE SHAFT	43G	43G-4000AF	WORM SHAFT
6F	6F-1000AF	ANTI-REVERSE CAM SCREW	43H	43H-1000AF	BALL BEARING (2 REQ.)
6G	6G-1000AF	ANTI-REVERSE CAM	43J	43J-1000AF	BEARING RETAINER
8	8-3000AF	MAIN GEAR	43K	43K-1000AF	BEARING RETAINER SCREW
8A	8A-1000AF	THRUST WASHER	44	44-1000AF	HOUSING COVER SCREW (3 REQ.)
8B	8B-1000AF	DRIVE GEAR	45	45-3000AF	HOUSING COVER
8C	8C-1000AF	THRUST WASHER	46	46-1000AF	CLUTCH RETAINER SCEW (3 REQ.)
15	15-1000AF	HANDLE ASSEMBLY	47	47-4000AF	SPOOL ASSEMBLY
19	19-3000AF	PINION	47A	47A-1000AF	BEARING RETAINING RING
19A	19A-3000AF	PINION GUIDE BUSHING	47B	47B-1000AF	BALL BEARING (2 REQ.)
20	20-1000AF	BALL BEARING (2 REQ.)	48	48-1000AF	CLICK TONGUE
20A	20A-1000AF	BALL BEARING COLLAR	49	49-1000AF	CLICK TONGUE SPRING
20B	20-2000AF	BALL BEARING	50	50-1000AF	BAIL SPRING COVER SCREW (2 REQ.)
22	22-1000AF	SPOOL CLICK SCREW	51	51-1000AF	DRAG RETAINING RING
24	24-4000AF	BAIL ARM ASSEMBLY	51A	51A-3000AF	CLICK PLATE ASSEMBLY
26	26-1000AF	LINE ROLLER STUD	52	52-1000AF	DRAG KNOB ASSEMBLY
27	27-4000AF	ROTOR	56	56-3000AF	DRAG WASHER (FRICTION)
27A	27A-4000AF	BAIL TRIP COVER	57	57-3000AF	METAL KEYED WASHER
28	28-4000AF	TRIP LEVER	58	58-3000AF	METAL EARRERD WASHER
28C	28C-3000AF	TRIP CAM	60	60-1000AF	THRUST WASHER
28D	28D-3000AF	FRICTION RING	60A	60A-1000AF	SPOOL WASHER
28E	28E-1000AF	TRIP CAM SCREW	81	81-1000AF	IDLER GEAR
31	31-1000AF	BAIL ARM RETAINING RING	81A	81A-1000AF	IDLER GEAR SHAFT SUPPORT
31A	31A-1000AF	BAIL CAM SCREW	81B	81B-3000AF	IDLER GEAR SHAFT
31B	31B-3000AF	BAIL CAM WASHER	81C	81C-1000AF	IDLER GEAR SHAFT BUSHING
32	32-3000AF	BAIL TRIP SPRING	81D	81D-1000AF	SUPPORT MOUNTING SCREW
34B	34B-1000AF	PIVOT GUIDE	81E	81E-1000AF	OUTER RING
34C	34C-1000AF	TRIP LEVER LINK	98	98-1000AF	CLUTCH RETAINER
35	35-1000AF	LINE ROLLER	98B	98B-1000AF	CLUTCH BEARING (W/ROLLERS)
36	36-1000AF	ROLLER MOUNTING SCREW	**	98B-1000AF-ACLUTCH BEARING ASSEMBLY	
38	38-1000AF	ROTOR NUT	98C	98C-1000AF	SPRING ANCHOR PIN
38A	38A-1000AF	ROTOR NUT SCREW	98D	98D-1000AF	ONE-WAY CLUTCH SPRING
39	39-4000AF	SPOOL SHAFT	98S	98S-1000AF	ONE-WAY CLUTCH SLEEVE
40B	40B-1000AF	CLICK RATCHET	132	132-1000AF	ROLLER WASHER
43	43-3000AF	CROSSWIND BLOCK	226	226-3000AF	REAR CAP
43A	43A-1000AF	CROSSWIND BLOCK SCREW	226A	226A-1000AF	REAR CAP SCREW
43B	43B-1000AF	CROSSWIND PAWL	227	227-4000AF	BAIL CAM COVER
43C	43C-1000AF	PAWL COLLAR	231	231-1000AF	WORM SHAFT GEAR
43D	43D-1000AF	PAWL WASHER	233	233-1000AF	BEARING COVER ASSEMBLY
			233A	233A-1000AF	HANDLE LOCK WASHER
			233B	233B-1000AF	HANDLE THRUST WASHER

** See box cutout on diagram

NOTE: Many of www.pennparts.com schematics include changes that were either made by Penn, or errors found and corrected by our parts dept.

SBT VER. 020406