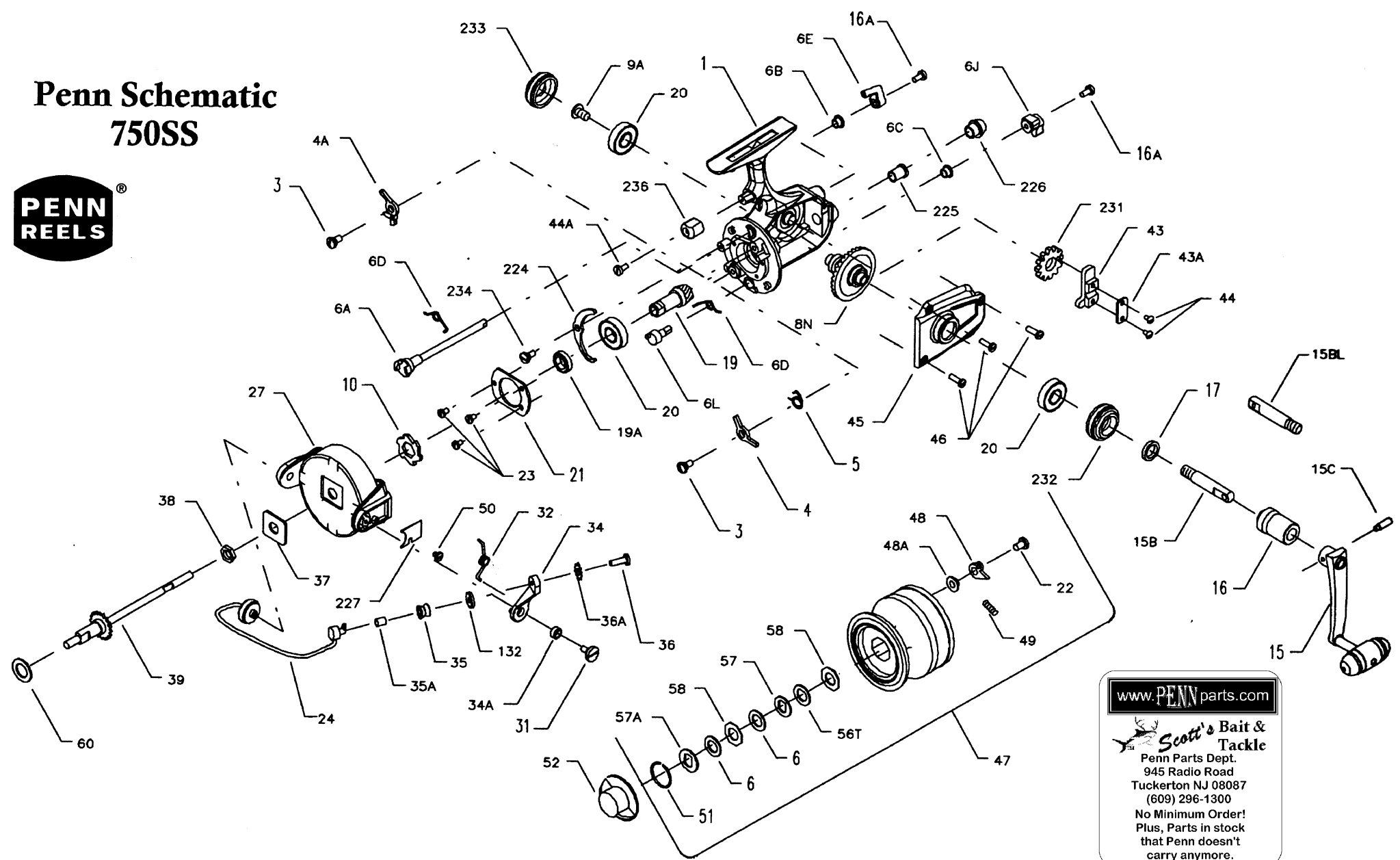


Penn Schematic 750SS



www.PENNparts.com

Scott's Bait & Tackle
Penn Parts Dept.
945 Radio Road
Tuckerton NJ 08087
(609) 296-1300

No Minimum Order!
Plus, Parts in stock
that Penn doesn't
carry anymore.

Penn Reel Parts list for:

Model: 750SS

KEY	PART	DESCRIPTION	KEY	PART	DESCRIPTION
NO	NO.		NO	NO.	
1	1-7500	HOUSING	35	35-750	LINE ROLLER
3	3-750	DOG SCREW	35A	35A-704	ROLLER SLEEVE
4	4-750	DOG	36	36-750	BAIL STUD SCREW
4A	4A-750	SILENT	36A	36A-750	LOCK WASHER
5	5-704	CLICK DOG SPRING	37	37-706	ROTOR WASHER
6	6-60	DRAG WASHER HT 100	38	38-710	ROTOR NUT
6A	6A-750	UPPER ECCENTRIC	39	39-750	CROSSWIND SHAFT
6B	6B-750	UPPER ECCENTRIC LINER	43	43-750	CROSSWIND BLOCK
6C	6B-700Z	SILENT ECCENTRIC LINER	43A	43A-750	CROSSWIND BLOCK PLATE
6D	6D-710	ECCENTRIC SPRING	44	44-750	CROSSWIND BLOCK SCREW
6E	6E-750	ANTI-REVERSE LEVER	44A	44-750	TRIP BUMPER SCREW
6J	6J-750	SILENT DOG LEVER	45	45-750	HOUSING COVER
6L	6L-750	SILENT ECCENTRIC	46	46-750	HOUSING COVER SCREW (2 REQ.)
*	7-750	PINION BUSHING	47	47-7500	SPOOL (COMPLETE)
8	8N-750	MAIN GEAR (old #8-750)	48	48-750	CLICK TONGUE
9A	9A-750	STANDARD DRIVE SCREW	48A	48A-750	CLICK TONGUE WASHER
10	10-750	RATCHET	49	49-710	CLICK TONGUE SPRING
15	15-750	HANDLE	50	50-712	BAIL SPRING COVER SCREW
15B	15G-850	STANDARD PIVOT (OLD 15B-850)	51	51-704	RETAINING RING
15BL	15BL-850	LEFT HAND PIVOT	52	52-750	DRAG KNOB
15C	15C-750	PIVOT SCREW	56T	56T-704	DRAG WASHER
16	16N-850	COLLAR (old 16-850)	57	57-704	DRAG WASHER (KEYED) SMALL DIA
16A	16-910	ECCENTRIC SCREW	57A	57A-750	DRAG WASHER (KEYED) LARGE DIA
17	17-750	SEAL WASHER	58	58-704	DRAG WASHER (OCTAGON)
19	19-750	PINION	60	60-750	THRUST WASHER
19A	19A-750	PINION SPACER	132	132-750	ROLLER WASHER
20	20-704	BEARING	224	224-750	TRANSFER LEVER
21	21-750	BEARING COVER	225	225-750	CROSSWIND SHAFT BUSHING
22	22-750	SPOOL CLICK SCREW	226	226-750	BUSHING CAP SCREW
23	23-750	BEARING COVER SCREW (3 REQ.)	227	227-750	BAIL SPRING COVER
24	24-750	BAIL WIRE	231	231-750	CROSSWIND GEAR
27	27-750	ROTOR	232	232-750	BEARING COVER (OPEN)
31	31-750	BAIL ARM SCREW	233	233-750	BEARING COVER (CLOSED)
32	32-750	BAIL ARM SPRING	234	234-750	TRANSFER LEVER SCREW
34	34-750	BAIL ARM	236	236-750	TRIP BUMPER
34A	34A-750	BAIL ARM BUSHING	*	300-7500	POWER HANDLE

***NOT SHOWN**

NOTE: Many of www.pennparts.com schematics include changes that were either made by Penn, or errors found and corrected by our parts dept.

SBT Ver. 012409

Newer Handle/Gear System:

8N-750 Main Gear**
 15G-850 Handle Pivot (f/standard/left hand use)
 16N-850 Handle Collar
 ** does not use 9A-750 on new version

Older Handle/Gear System:

8-750 Main Gear
 15B-850 Handle Pivot OR 15BL-850 LH Handle Pivot
 16N-850 Handle Collar
 9A-750 STANDARD DRIVE SCREW

This conversion came about because Penn discontinued the original 8-750 gear