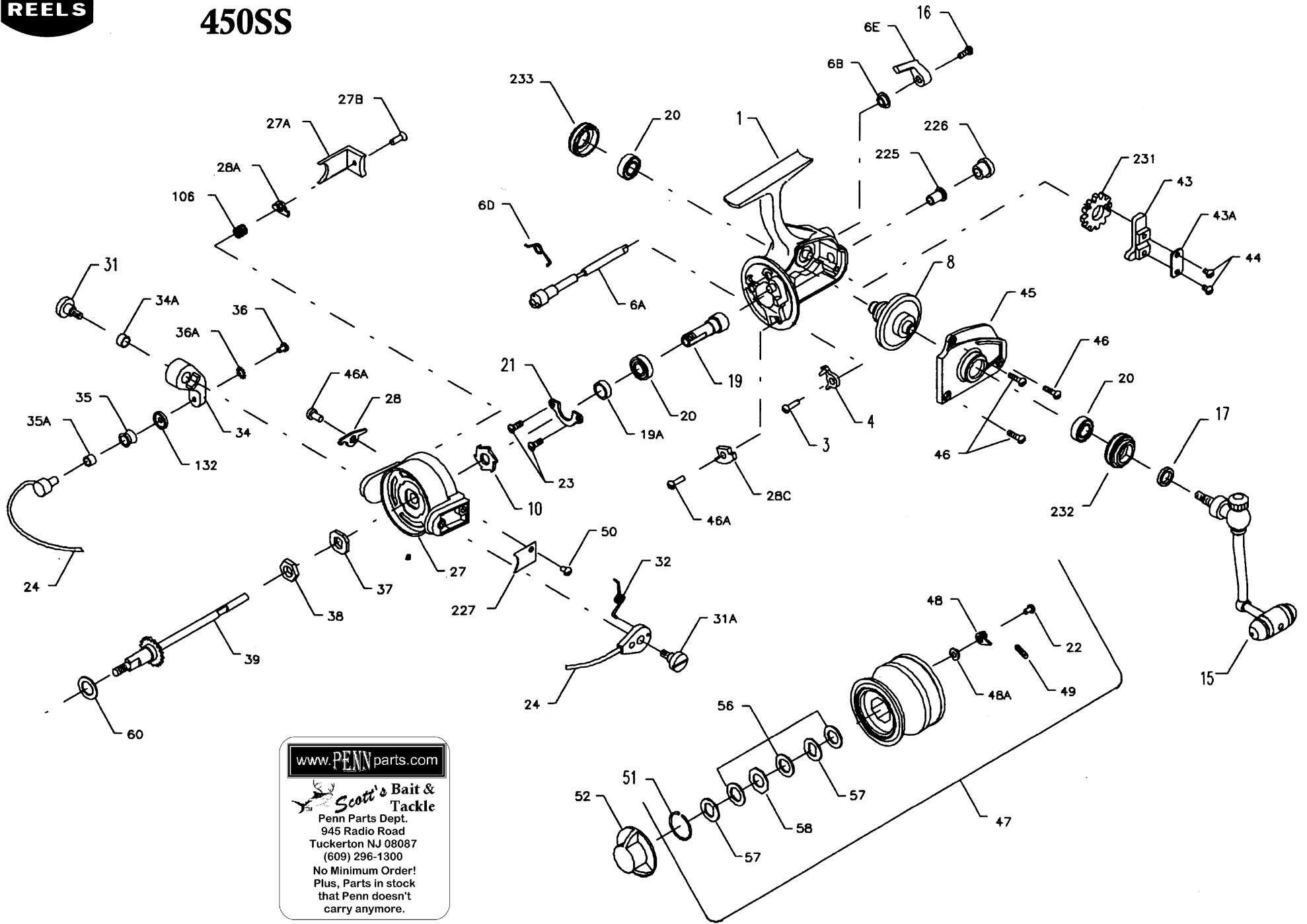




Penn Schematic 450SS



www.PENNparts.com
Scott's Bait & Tackle
Penn Parts Dept.
945 Radio Road
Tuckerton NJ 08087
(609) 296-1300
No Minimum Order!
Plus, Parts in stock
that Penn doesn't
carry anymore.

Penn Reel Parts list for:

Model: 450SS

KEY	PART	DESCRIPTION	KEY	PART	DESCRIPTION
NO	NO.		NO	NO.	
1	1-450	HOUSING	35A	35A-704	LINE ROLLER BUSHING
3	3-750	DOG	36	36-750	BAIL STUD SCREW
4	4-450	DOG	36A	36A-750	LOCK WASHER
6A	6A-450	ECCENTRIC	37	37-450	ROTOR WASHER
6B	6B-750	ECCENTRIC LINER	38	38-550	ROTOR NUT
6D	6D-710	ECCENTRIC SPRING	39	39-450	CROSSWIND SHAFT
6E	6E-750	ECCENTRIC LEVER	43	43-550	CROSSWIND BLOCK
8	8-450	MAIN GEAR	43A	43A-550	CROSSWIND BLOCK PLATE
10	10-550	RATCHET	44	22-750	CROSSWIND BLOCK SCREW (2 REQ.)
15	15-450	HANDLE	45	45-450	HOUSING COVER
16	16-910	ECCENTRIC SCREW	46	46-750	COVER SCREW (3 REQ.)
17	17-450	SEAL WASHER	46A	46A-704	TRIP CAM SCREW
19	19-450	PINION	47	47-4500	SPOOL (COMPLETE)
19A	19A-550	PINION SPACER	48	48-450	CLICK TONGUE
20	20-722	BALL BEARING	48A	48A-750	CLICK TONGUE WASHER
21	21-450	BEARING COVER	49	49-710	CLICK TONGUE SPRING
22	22-750	SPOOL CLICK SCREW	50	50-712	BAIL SPRING COVER SCREW
23	23-750	BEARING COVER SCREW (2 REQ.)	51	51-710	RETAINING RING
24	24-450	BAIL WIRE	52	52-550	DRAG KNOB
27	27-450	ROTOR	56	56-710	DRAG WASHER-HT 100
27A	27A-450	BAIL TRIP COVER	57	57-720	METAL SLOT WASHER
27B	27B-450	ROTOR END SCREW	58	58-710	METAL WASHER (OCTAGON)
28	28-450	TRIP LEVER	60	60-450	THRUST WASHER (TEFLON)
28A	28A-450	CAM LEVER	106	106-450	LEVER SPRING
28C	28C-450	TRIP CAM	132	132-450	ROLLER WASHER
31	31-550	BAIL ARM SCREW	225	225-5500	CROSSWIND SHAFT BUSHING
31A	31A-450	TRIP ARM SCREW	226	226-450	BUSHING CAP COVER
32	32-450	BAIL SPRING	227	227-450	BAIL SPRING COVER
34	34-450	BAIL ARM	231	231-450	CROSSWIND GEAR
34A	34A-550	BAIL ARM BUSHING	232	232-650	BEARING COVER (OPEN)
35	35-704	LINE ROLLER	233	233-650	BEARING COVER (CLOSED)

NOTE: Many of www.pennparts.com schematics include changes that were either made by Penn, or errors found and corrected by our parts dept.