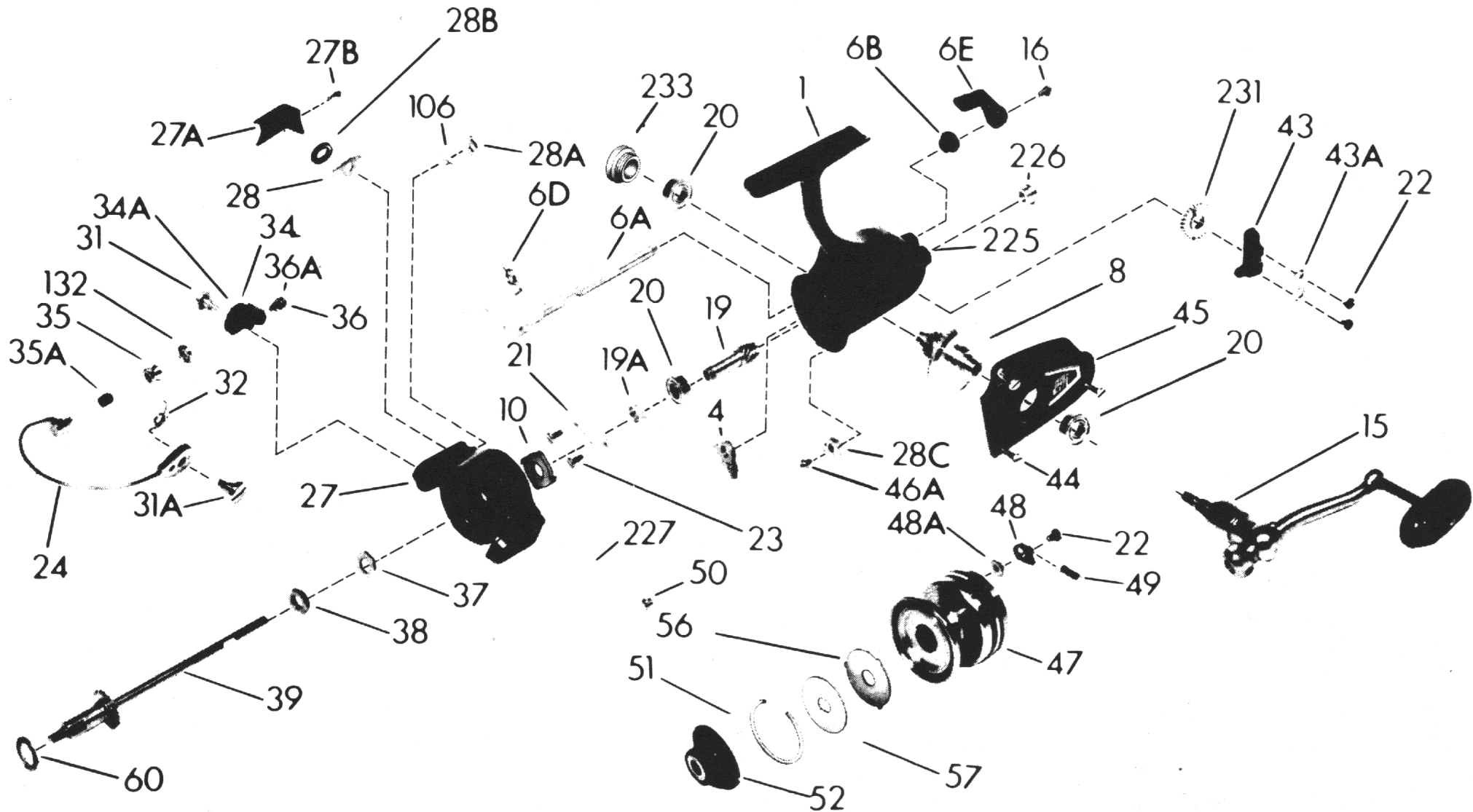




# PARTS LIST FOR MODEL 440SS



Penn Reel Parts list for Model: 440SS

**KEY PART**

<b>NO</b>	<b>NO.</b>	<b>DESCRIPTION</b>	<b>NO</b>	<b>NO.</b>	<b>DESCRIPTION</b>
1	1P-4400	HOUSING	35	35-704	LINE ROLLER
4	4-450	DOG (f/older models)	35A	35A-704	LINE ROLLER BRUSHING
6A	6A-440	ECCENTRIC	36	36-750	BAIL STUD SCREW
6B	6B-750	ECCENTRIC LINER	36A	36A-750	LOCK WASHER
6D	6D-710	ECCENTRIC SPRING	37	37-450	ROTOR WASHER
6E	6E-750	ECCENTRIC LEVER	38	38-550	ROTOR NUT
8	8-440	MAIN GEAR	39	39-440	SPOOL SHAFT
10	10-440	RATCHET (f/older models)	43	43-440	CROSSWIND BLOCK
15	15-440	HANDLE (COMPLETE)	43A	43A-440	CROSSWIND BLOCK PLATE
16	16-910	ECCENTRIC SCREW	44	44-704	HOUSING COVER SCREW
19	19-440	PINION	45	45-4400	HOUSING COVER (OLD#45-440)
19A	19A-550	PINION SPACER	46A	46A-704	TRIP CAM SCREW
20	20-722	BALL BEARING	47	47-440	SPOOL (COMPLETE)
21	21-450	BEARING COVER	48	48-450	CLICK TONGUE
22	22-750	SPOOL CLICK SCREW	48A	48A-750	CLICK TONGUE WASHER
23	23-750	BEARING COVER SCREW	49	49-710	CLICK TONGUE SPRING
24	24-440	BAIL WIRE	50	50-712	BAIL SPRING COVER SCREW
27	27-4400	ROTOR	51	51-440	RETAINING RING
27A	27A-440	BAIL TRIP COVER	52	52-440	DRAG KNOB
27B	27B-420	ROTOR END SCREW	56	56-440	DRAG WASHER
28	28-440	TRIP LEVER	57	57-440	METAL KEYED WASHER
28A	28A-440	CAM LEVER	60	60-450	THRUST WASHER (TEFLON)
28B	28B-440	TRIP LEVER BUSHING	106	106-450	LEVER SPRING
28C	28C-440	TRIP CAM	132	132-450	ROLLER WASHER
31	31-550	BAIL ARM SCREW	225	225-440	CROSSWIND SHAFT BUSHING
31A	31A-450	BAIL CAM SCREW	226	226-450	BUSHING CAP COVER
32	32-440	BAIL SPRING	227	227-440	BAIL SPRING COVER
34	34-450	BAIL ARM	231	231-440	CROSSWIND GEAR
34A	34A-550	BAIL ARM BUSHING	233	233-440	BEARING COVER

NOTE: Many of [www.pennparts.com](http://www.pennparts.com) schematics include changes that were either made by Penn, or errors found and corrected by our parts dept.  
 SBT Version 071417