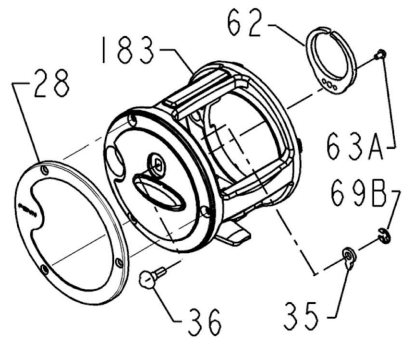


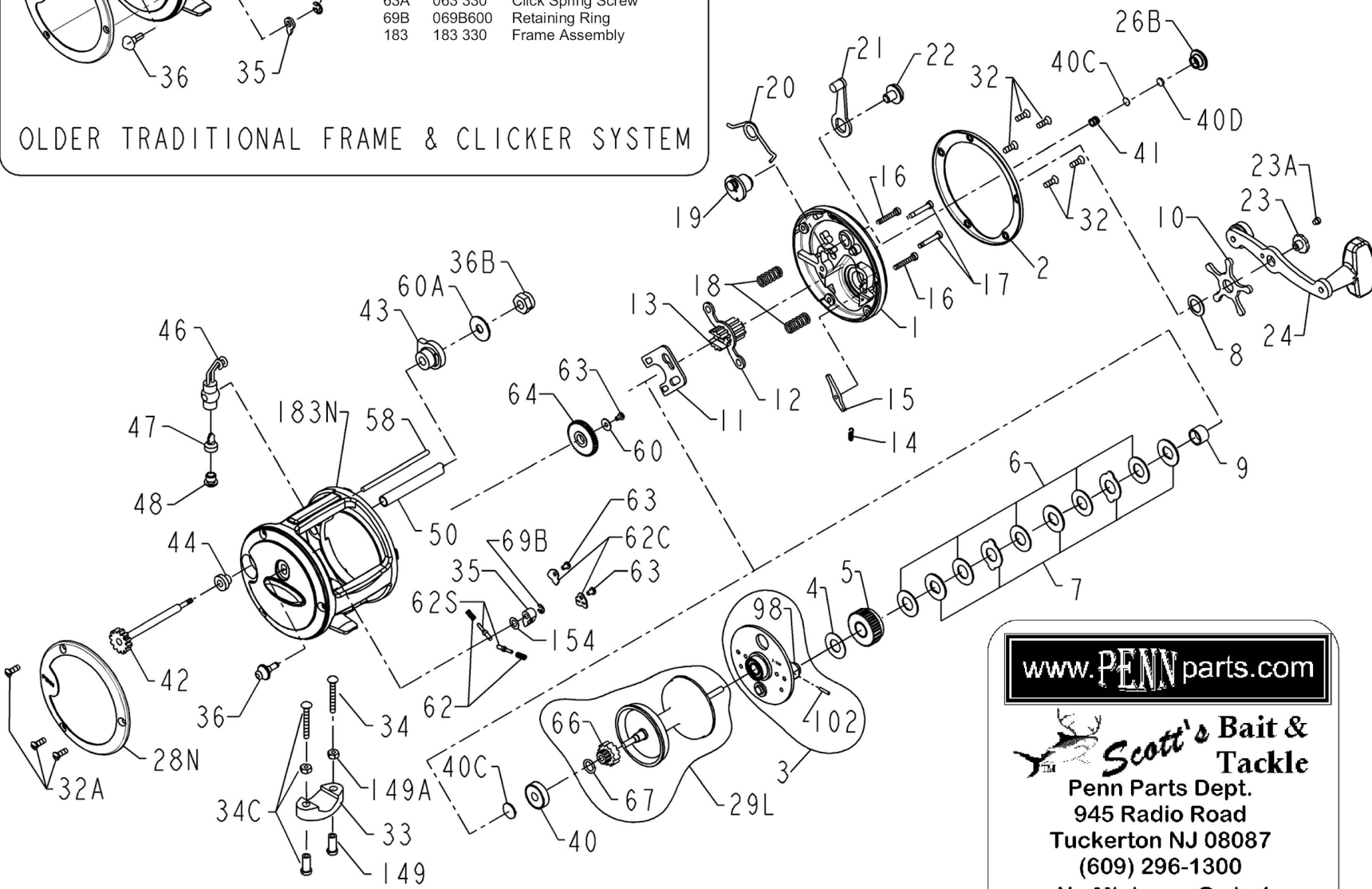


PARTS LIST FOR MODEL 330GTI

KEY NO.	PART NO.	DESCRIPTION
28	028 330	Left Side Ring
35	035 320	Click Tongue
36	036 320	Click Button
62	062 209	Click Spring
63A	063 330	Click Spring Screw
69B	069B600	Retaining Ring
183	183 330	Frame Assembly



OLDER TRADITIONAL FRAME & CLICKER SYSTEM



NEW ERGONOMIC FRAME AND PLUNGER CLICKER SYSTEM
NOTE: NOT ALL PARTS AT THE SAME SCALE

www.PENNparts.com

Scott's Bait & Tackle
 Penn Parts Dept.
 945 Radio Road
 Tuckerton NJ 08087
 (609) 296-1300
 No Minimum Order!
 Plus, Parts in stock
 that Penn doesn't
 carry anymore.

Penn Reel Parts list for:

Model: 330GTi

KEY NO	PART NO.	DESCRIPTION	KEY NO	PART NO.	DESCRIPTION
1	1-330	HANDLE SIDE PLATE	*	33R-200	RINGED ROD CLAMP (OPTIONAL)
2	2-330	HANDLE SIDE RING	34	34-45	CLAMP SCREW ONLY
3	3-330	BRIDGE ASSEMBLY	34C	34C-45	CLAMP SCREW W/ NUTS
4	4-349	FIBER WASHER	35	35-310N	CLICK TONGUE
5	5n-320	MAIN GEAR	36	36-330	CLICK BUTTON
6	6-320	FRICITION DRAG WASHER (5 REQUIRED)	36B	36-700	WORM SHAFT NUT
**	7-970	METAL DRAG WASHER - TITTED	40	40-320	BALL BEARING
7	7C-330	METAL DRAG WASHER (SET OF 5)	40C	40C-320	METAL THRUST WASHER (2 REQUIRED)
8	8-349	TENSION SPRING	40D	40D-320	RUBBER THRUST WASHER
9	9-320	SPACING SLEEVE	41	41-330	HANDLE SIDE THRUST SPRING
10	10-349	STAR DRAG	42	42-330N	WORM
11	11-330	ECCENTRIC JACK	43	43-330	HANDLE SIDE WORM BEARING
12	12-60	PINION YOKE	44	44-330	NON-HANDLE SIDE WORM BEARING
13	13N-330	PINION GEAR	46	46-330N	LINE GUIDE CARRIAGE
14	14-330	DOG SPRING	47	47-320	PAWL
15	15-330	DOG	48	48-330N	PAWL COVER SCREW
16	16-113H	LOWER BRIDGE SCREW (2 REQUIRED)	50	50N-330	WORM SHEILD
17	17-113H	UPPER BRIDGE SCREW (2 REQUIRED)	58	58-330	LINE WORM POST
18	18-60	CLUTCH SPRING (2 REQUIRED)	60	60-320	IDLER GUIDE WASHER
19	19-330	ECCENTRIC CAM	60A	60-320	WORM BEARING WASHER
20	20-155	ECCENTRIC SPRING	62	62A-320	CLICK SPRING (2 REQUIRED)
21	21-309	ECCENTRIC LEVER ASSEMBLY	62C	62C-321LH	CLICK SPRING COVER (2 REQUIRED)
22	22-60CH	ECCENTRIC SCREW	62S	62S-320	CLICK PIN (2 REQUIRED)
23	23-114	HANDLE ASSEMBLY SCREW	63	63-500S	IDLER GEAR SCREW
23A	110-60	HANDLE LOCK SCREW	64	64-330	IDLER GEAR
24	24-225	HANDLE ASSEMBLY	66	66-320	SPOOL GEAR CLICK RATCHET
26B	26B-330	SPOOL TENSION CONTROL CAP	67	67-9	SPOOL GEAR LOCK RING
28	28N-330	NON-HANDLE SIDE RING	69B	69B-600	RETAINING RING CLICK BUTTON
29L	29L-330	ALUMINUM SPOOL	**	86-970	METAL DRAG WASHER - SMOOTH
32	32-17	R.S. PLATE SCREW	98	98-320	GEAR SLEEVE
32A	32-310	L.S. RING SCREW (3 REQUIRED)	149	149-45	CLAMP NUT ONLY
33	33-113	ROD CLAMP	149A	149-200	HEX NUT ONLY
			154	154-117	CLICK BUTTON WASHER
			183	183N-330	FRAME

Reel Redesigned (Rev. 12)
w/ new ergonomic frame and plunger click system

Key#	Old #	New #	Part
28	28-330	28N-330	NON-HANDLE SIDE RING
35	35-320	35-310N	CLICK TONGUE
36	36-320	36-330	CLICK BUTTON
62	62-209	62A-310 (2)	CLICK SPRING
62C	--	62C-321LH	CLICK SPRING COVER (2 REQUIRED)
62S	--	62S-320	CLICK PIN (2 REQUIRED)
63A	63-330	--	CLICK SPRING SCREW
69B	69B-600	69B-600	RETAINING RING CLICK BUTTON
154	--	154-117	CLICK BUTTON WASHER
183	183-330	183N-330	FRAME

CHANGES:

Penn's schematics all show 7c-970 as the metal washer set number however the 330gti takes a set of (5) metal washers and the 7c-970 is a set of (3). Pennparts.com put together the correct qty 7C-330.

NOTE: Many of www.pennparts.com schematics include changes that were either made by Penn, or errors found and corrected by our parts dept.

SBT Ver. 060510 (based on Penn's Rev 12)