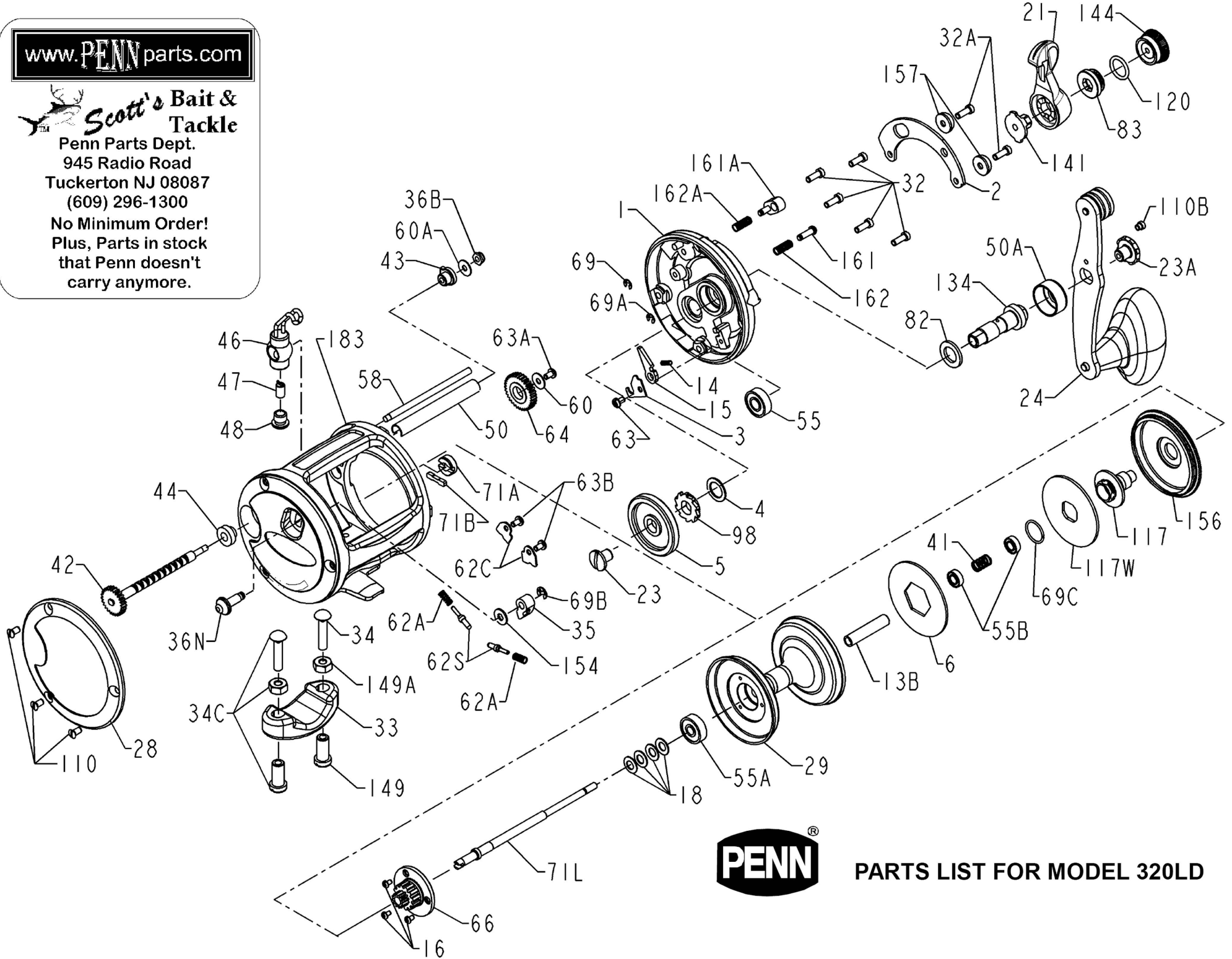


www.PENNparts.com

Scott's Bait & Tackle

Penn Parts Dept.
945 Radio Road
Tuckerton NJ 08087
(609) 296-1300

No Minimum Order!
Plus, Parts in stock
that Penn doesn't
carry anymore.



PARTS LIST FOR MODEL 320LD

Penn Reel Parts list for:

Model: 320LD GT Lever Drag Reel

KEY NO	PART NO.	DESCRIPTION	KEY NO	PART NO.	DESCRIPTION
1	1-320LD	RIGHT SIDE PLATE	60	60-320	IDLER GEAR WASHER
2	2-320LD	RIGHT SIDE RING	60A	60-320	WORM BEARING WASHER
3	3-320LD	BRIDGE ASSEMBLY	62A	62A-310	CLICK SPRING (2 REQ.)
4	4-25	GEAR STUD WASHER	62B	62B-310	CLICK PIN
5	5-320LD	MAIN GEAR	62C	62C-321LH	CLICK SPRING COVER (2 REQ.)
6	6-320LD	DRAG WASHER HT-100	63	63-500S	DOG BRIDGE SCREW
13B	13B-320LD	SPOOL SLEEVE	63A	63-500S	IDLER GEAR SCREW
14	14-99	DOG SPRING	63B	63-500S	CLICK SPRING SCREW (2 REQ.)
15	15N-25	DOG	64	64-320	IDLER GEAR
16	16-975LD	SPOOL GEAR SCREW (3 REQ.)	66	66-320LD	SPOOL GEAR
18	18-975LD	CLUTCH DISCS SPRING (4 REQ.)	69	69B-50	STRIKE BUTTON RETAINING RING
21	21-320LD	DRAG CAM LEVER	69A	69B-50	FREE SPOOL BUTTON RETAINING RING
23	23-6CH	GEAR MOUNTING SCREW	69B	69B-600	CLICK TONGUE RETAINING RING
23A	23-114	HANDLE SCREW	69C	69C-320LD	RETAINING RING
24	24-225	HANDLE ASSEMBLY	71A	71A-320LD	BUSHING
28	28-320GT2	LEFT SIDE RING	71B	71B-320LD	KEY
29L	29L-320LD	SPOOL	71L	71L-320LD	SPINDLE SPOOL
32	39-4CH	R.S. PLATE SCREW (5 REQ.)	82	82-25	HANDLE SHIM
32A	39-4CH	SPACER QUADRANT SCREW (2 REQ.)	83	83-225	PRESET COLLAR
33	33-113	ROD CLAMP	98	98-25	MAIN GEAR RATCHET
*	33R-200	RINGED ROD CLAMP (OPTIONAL)	110	110-50	L.S. RING SCREW (3 REQ.)
34	34-45	CLAMP SCREW ONLY	110B	110-60	HANDLE LOCK SCREW
34C	34C-45	CLAMP SCREW W/ NUTS	117	117-320LD	PINION DRIVE PLATE
35	35-310N	CLICK TONGUE	117W	117W-320LD	WASHER, DRIVE PLATE
36	36-320LD	CLICK BUTTON	120	120-113H	O-RING
36A	36A-320LD	CLICK BUTTON WASHER	134	134-25	GEAR STUD
36B	36-700	WORM SHAFT NUT	141	141-225	CAM FOLLOWER
41	41-225	BEARING SPRING	144	144-320LD	PRESET KNOB
42	42-320N	WORM	149	149-45	CLAMP NUT (2 REQ.)
43	43-330	RIGHT SIDE WORM BEARING	149A	149-200	HEX NUT (2 REQ.)
44	44-330	LEFT SIDE WORM BUSHING	156	156-320LD	DRAG COVER
46	46-320N	LINE GUIDE CARRIAGE	157	157-320LD	QUADRANT SPACE (2 REQ.)
47	47-320	PAWL	161	161-320LD	FREE SPOOL BUTTON
48	48-330N	PAWL COVER SCREW	161A	161-40	STRIKE BUTTON
50	50N-320	WORM SHEILD	162	162-50	FREE SPOOL BUTTON SPRING
50A	50-25	COVER GEAR STUD	162A	162-50	STRIKE BUTTON SPRING
55	55-6	R.S. PLATE BALL BEARING	183	183-320LD	FRAME
55A	55-320LD	L.S. SPOOL BEARING			
55b	55-965	SPOOL BEARING (2 REQ.)			
58	58-320	LINE GUIDE POST			

* Not Shown

NOTE: Many of www.pennparts.com schematics include changes that were either made by Penn, or errors found and corrected by our parts dept.

SBT Ver. 071510