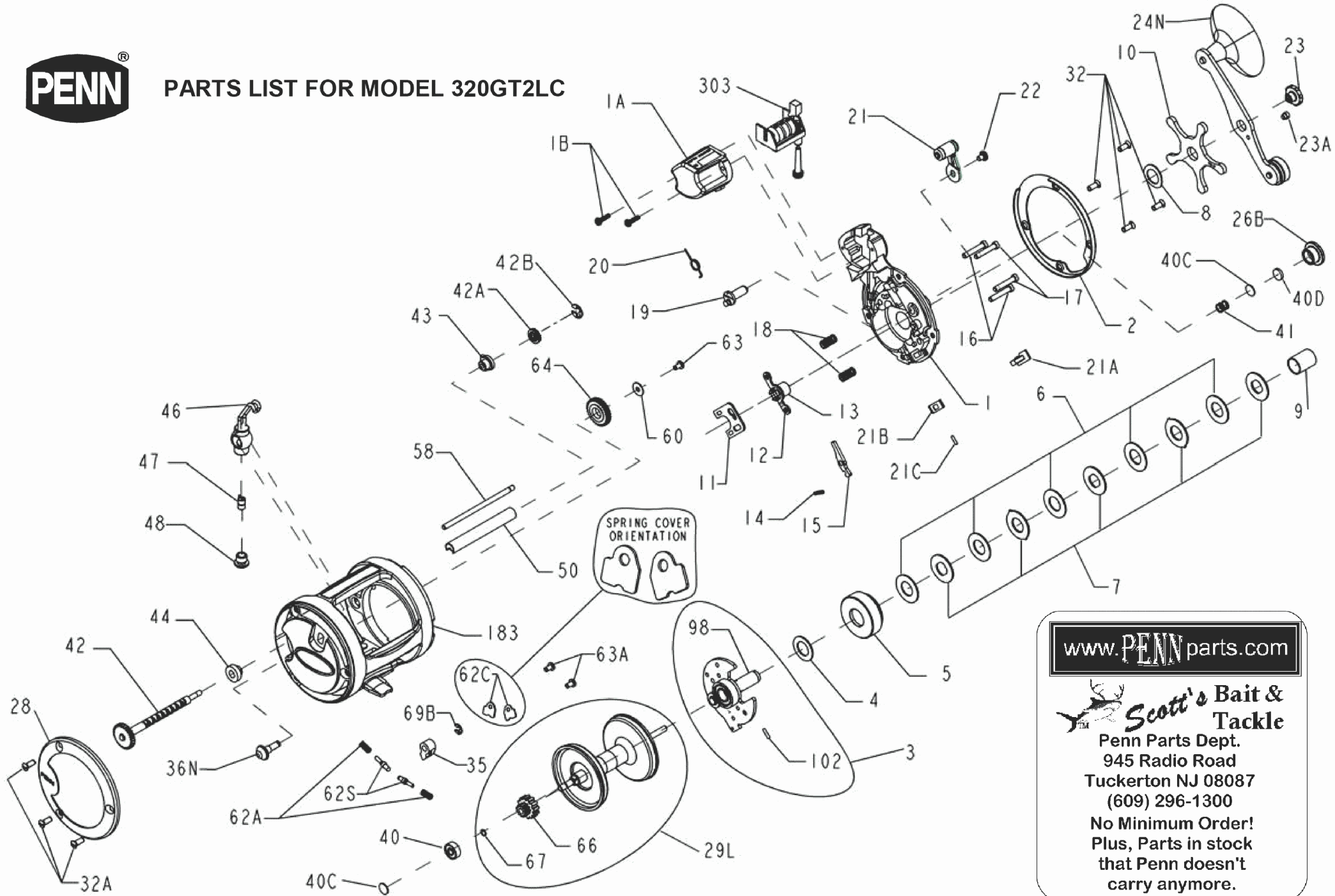




PARTS LIST FOR MODEL 320GT2LC



www.PENNparts.com

Scott's Bait & Tackle
Penn Parts Dept.
945 Radio Road
Tuckerton NJ 08087
(609) 296-1300

No Minimum Order!
Plus, Parts in stock
that Penn doesn't
carry anymore.

SBT Ver. 101008
(built using Penn's 310gt2lc as guideline)

Penn Reel Parts list for:

Model: 320GT2LC

KEY PART			KEY PART		
NO	NO.	DESCRIPTION	NO	NO.	DESCRIPTION
1	1-320GT2LC	RIGHT SIDE PLATE	34	34-45	CLAMP SCREW ONLY
1A	1A-320GT2LC	LINE COUNTER COVER	34C	34C-45	CLAMP SCREW W/ NUTS
1B	1B-310GT2LC	SCREW, F/ LINE COUNTER COVER (2 REQUIREI	35	35-310N	CLICK TONGUE
2	2-320GT2LC	RIGHT SIDE RING	36N	36N-320LD	CLICK BUTTON
3	3-320	BRIDGE ASSEMBLY	36B	36-700	WORM SHAFT NUT
4	4-349	FIBER WASHER	40	40-320	BALL BEARING
5	5N-320	MAIN GEAR	40C	40C-320	METAL THRUST WASHER (2 REQUIRED)
6	6-320	FRICTION DRAG WAHSER (5 REQUIRED)	40D	40D-320	RUBBER THRUST WASHER
7	7C-330	METAL DRAG WASHER (SET OF 5)	41	41-330	RIGHT SIDE THRUST SPRING
8	8-349	TENSION SPRING	42	42-320GT2LC	WORM
9	9-320	SPACING SLEEVE	42A	42A-320GT2LC	GEAR, F/LINE COUNTER DRIVE
10	10-349	STAR DRAG	42B	42B-320GT2LC	RETAINING RING, F/LINE COUNTER DRI
11	11-320	ECCENTRIC JACK	43	43-330	RIGHT SIDE WORM BEARING
12	12-155	PINION YOKE	44	44-330	LEFT SIDE WORM BEARING
13	13N-320	PINION GEAR	46	46-320N	LINE GUIDE CARRIAGE
14	14-330	DOG SPRING	47	47-975	PAWL
15	15-320	DOG	48	48-330N	PAWL COVER SCREW
16	16-113H	LOWER BRIDGE SCREW (2 REQUIRED)	50	50T-320	WORM SHEILD
17	17-113H	UPPER BRIDGE SCREW (2 REQUIRED)	58	58-320	LINE GUIDE POST
18	18-60	CLUTCH SPRING (2 REQUIRED)	60	60-320	IDLER GEAR WASHER
19	19-320	ECCENTRIC CAM	60A	60-320	WORM NUT WASHER
20	20-155	ECCENTRIC SPRING	62A	62A-310	CLICK SPRING
21	21-285	ECCENTRIC LEVER ASSEMBLY	62S	62S-310	CLICK PIN (2 REQUIRED)
22	22-60	ECCENTRIC SCREW	62C	62C-321LH	CLICK SPRING COVER (2 REQUIRED)
23	23-114	HANDLE ASSEMBLY SCREW	63	63-500S	IDLER GEAR SCREW
23A	110-60	HANDLE LOCK SCREW	63A	63-500S	CLICK SPRING SCREW
24	24S-320	HANDLE ASSEMBLY	64	64-320	IDLER GEAR
26B	26B-320	SPOOL TENSION CONTROL CAP	66	66-320	SPOOL GEAR CLICK RATCHET
28	28-320GT2	LEFT SIDE RING	67	67-9	SPOOL GEAR LOCK RING
29L	29L-320	ALUMINUM SPOOL	69B	69B-600	RETAINING RING (CLICK BUTTON)
32	32-17	SIDE PLATE SCREW (5 REQUIRED)	98	98-320	GEAR SLEEVE
32A	110-50	FRAME SCREW (3 REQUIRED)	102	102-113	GEAR SLEEVE PIN
33	33-113	ROD CLAMP	149	149-45	CLAMP NUT ONLY
*	33R-200	RINGED ROD CLAMP (OPTIONAL)	149A	149-200	HEX NUT ONLY
			154	154-117	CLICK BUTTON WASHER
			183	183-320GT2LC	FRAME
			303	303-320GT2LC	COUNTER WHEEL ASSEMBLY

* Not Shown

NOTE: Many of www.pennparts.com schematics include changes that were either made by Penn, or errors found and corrected by our parts dept. SBT Ver 100710 (built using 310gt2lc as guideline)

Orig. schematics by Penn listed 7C-970 metal set which only contains 3 metal washers
This reel uses 5 metal washers, so the set #was changed to 7C-330 by Pennparts.com