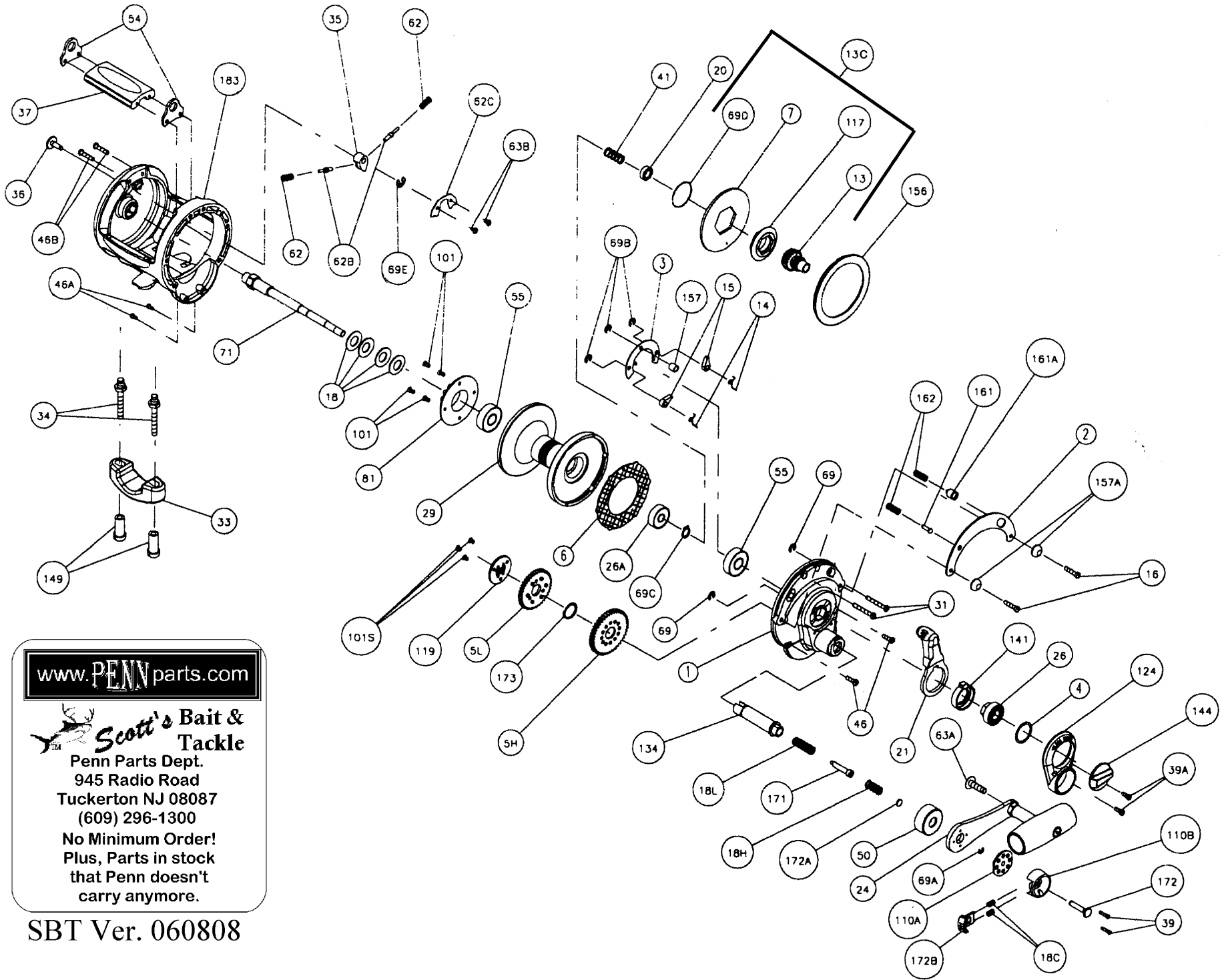


PARTS LIST FOR MODEL 15KG



www.PENNparts.com

Scott's Bait & Tackle
Penn Parts Dept.
945 Radio Road
Tuckerton NJ 08087
(609) 296-1300

No Minimum Order!
Plus, Parts in stock
that Penn doesn't
carry anymore.

Penn Reel Parts list for:

Model: 15KG

KEY NO	Penn Part Number	PureFishing Part#	DESCRIPTION	KEY NO	Penn Part Number	PureFishing Part#	DESCRIPTION
1	1-15KG		RIGHT SIDE PLATE ASSEMBLY	55	55-50		BALL BEARING (2 REQ.)
2	2-15KG		QUADRANT RING	62	62-545		CLICK SPRING
3	3-15KG		DOG BRIDGE	62B	62B-525		CLICK PIN (2 REQ.)
4	4-12		CAM TEFLON WASHER	62C	62C-15KG		CLICK SPRING COVER
5H	5-15KGHS		MAIN GEAR (HIGH SPEED)	63A	63A-50		HANDLE STUD SCREW
5L	5-15KGLS		MAIN GEAR (LOW SPEED)	63B	63-500S		SPRING COVER SCREW (2 REQ.)
6	6-15KG		DRAG WASHER	63C	63-50		SCREW
7	7-15KG		METAL DRAG WASHER	69	69B-50		RETAINING RING (2 REQ.)
13	13-15KG		PINION GEAR	69A	69B-30S		RETAINING RING
14	14-15KG		DOG SPRING (2 REQ.)	69B	69B-600		RETAINING RING (3 REQ.)
15	15-15KG		DOG (2 REQ.)	69C	69C-15KG		SPINDLE RETANING RING
16	16-60CH		SIDE PLATE SCREW (2 REQ.)	69D	69D-15KG		RETAINING RING
18	18-50TW		DISC CLUTCH SPRING (4 REQ.)	69E	69B-600		RETAINING RING
18C	18C-15KG		SHIFT BUTTON SPRING (2 REQ.)	71	71-15KG		SPOOL SPINDLE
18H	18H-15KG		SHIFT SPRING (HEAVY)	81	81-40		CLICK RATCHET
18L	18L-15KG		SHIFT SPRING (LIGHT)	91	91N-50		HANDLE RIVET
20	20-4200		SPINDLE BALL BEARING	101	101-30		RATCHET SCREW (4 REQ.)
21	21-15KG		ECCENTRIC LEVER	101S	101-50S		RETAINING PLATE SCREW (4 REQ.)
24	24-15KG		HANDLE COMPLETE	110A	110A-15KG		HANDLE LOCKING PLATE
24A	24-15KG-1		HANDLE BLANK	110B	110B-15KG		SHIFT HOUSING
24C	24C-50		HANDLE KNOB CAP	117	117-15KG		DRIVE PLATE
25	25-50		HANDLE KNOB	119	119-15KG		RETAINING PLATE
26	26-15KG		BUSHING	124	124-15KG		BRIDGE COVER
26A	26-40		SPOOL BALL BEARING	134	134-15KG		GEAR STUD
29	29L-15KG		SPOOL	141	141-15KG		CAM FOLLOWER
31	31-15KG		LONG SCREW (2 REQ.)	144	144-15KG		PRESET KNOB
33	33-340		ROD CLAMP	149	149-45		ROD CLAMP NUT (2 REQ.)
34	34-975		ROD CLAMP SCREW (2 REQ.)	156	156-15KG		DRAG COVER
35	35-310N		CLICK TONGUE	157	157-50		SPACER BUSHING
36	36-15KG		CLICK BUTTON	157A	157-15KG		SPACER BUSHING
37	37E-15KG		TOP SPACER BAR (Old# 37a-15KG)	161	161-25		FREE SPOOL BUTTON
39	39-1		SHIFT HOUSING SCREW (2 REQ.)	161A	161-40		STRIKE BUTTON
39A	39-15KG		BRIDGE SCREW (2 REQ.)	162	162-50		BUTTON SPRING (2 REQ.)
41	41-15KG		SPINDLE SPRING	171	171-15KG		SHIFT PLUNGER
46	46-750		SHORT SCREW (2 REQ.)	172	172-15KG		SHIFT BUTTON (LOW)
46A	32-2		FRAME SCREW (2 REQ.)	172A	172A-15KG		SPRING SPACER
46B	46-9500		LONG FRAME SCREW (2 REQ.)	172B	172B-15KG		SHIFT BUTTON (HIGH)
50	50-15KG		GEAR STUD SHIELD	173	173-15KG		RETAINING RING
54	54-15KG		HARNESS LUG (2 REQ.)	183	183-15KG		FRAME

NOTE: Many of www.pennparts.com schematics include changes that were either made by Penn, or errors found and corrected by our parts dept.
SBT Ver. 060808

UPGRADE NOTES - Handle

Penn started subbing handle to 24M-15KG in 2005
To use the new number, you also need to change the screw (key#39) to 23-15KG