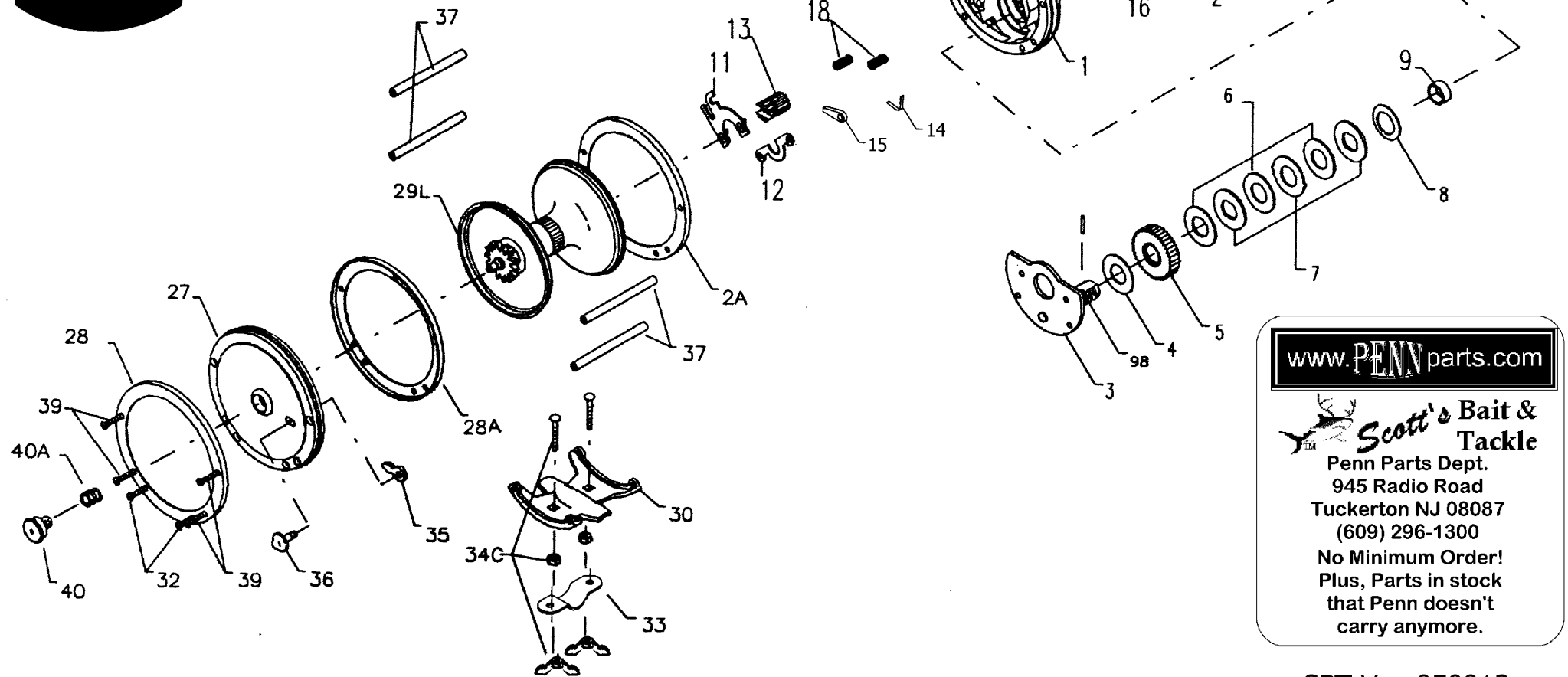


Penn Reel Schematic

110

(Using modified 112H schematic to come as close as possible---we don't have 110 schematic to work from)

PENN REELS®



www.PENNparts.com

Scott's Bait & Tackle

Penn Parts Dept.
945 Radio Road
Tuckerton NJ 08087
(609) 296-1300

No Minimum Order!
Plus, Parts in stock
that Penn doesn't
carry anymore.

SBT Ver. 050913

Penn Reel Parts list for Model 110 (1/0 Senator)

KEY PART			KEY PART		
NO	NO.	DESCRIPTION	NO	NO.	DESCRIPTION
1	1-110	HANDLE SIDE PLATE	23	23-60	HANDLE SCREW
2	2-110-O	OUTER HANDLE SIDE RING	23A	110-60	HANDLE LOCK SCREW
2A	2-110-I	INNER HANDLE SIDE RING	24	24-155	HANDLE
3	3-99	BRIDGE W/ SLEEVE	26	26-155	HANDLE SIDE BEARING
4	4-60	FIBER WASHER	27	27-110	LEFT SIDE PLATE
5	5-60	MAIN GEAR	28	28-110-O	OUTER LEFT SIDE RING
6	6-60	DRAG WASHER (3 REQUIRED)	28A	28-110-I	INNER LEFT SIDE RING
7	7C-60	METAL DRAG WASHER SET (3 REQUIRED)	29	29M-110	SPOOL
8	8-60	TENSION SPRING	30	30-49	STAND
9	9-60	SPACING SLEEVE	31	39-3	HANDLE SIDE STAND SCREW (2 REQUIRED)
10	10-60	STAR DRAG WHEEL	32	32-17	NON-HANDLE SIDE STAND SCREW (2 REQUIRED)
11	11-110	ECCENTRIC JACK	33	33-49	ROD CLAMP
12	12-110	PINION YOKE	34	34-49	ROD CLAMP SCREW
13	13-140	PINION (replaces old 13-99)	34C	34C-49	ROD CLAMP SCREW W/ NUTS
14	14-60	DOG SPRING	35	35-60	CLICK TONGUE
15	15-60	DOG	36	36-60CH	CLICK BUTTON
16	16-60CH	LOWER BRIDGE SCREW (2 REQUIRED)	37	37-180	FRAME POST
17	17-60CH	UPPER BRIDGE SCREW (2 REQUIRED)	38	39-9	HANDLE SIDE SCREW (4 REQUIRED)
18	18-60	CLUTCH SPRING (2 REQUIRED)	39	39-9	NON-HANDLE SIDE SCREW (4 REQUIRED)
19	19-110	ECCENTRIC	40	40-85	NON-HANDLE SIDE BEARING
20	20-60L	ECCENTRIC SPRING	40A	41-60	NON-HANDLE SIDE BEARING SPRING
21	21-66	ECCENTRIC LEVER	98	98-60	GEAR SLEEVE
22	22-99	ECCENTRIC SCREW	149A	149-200	HEX NUT (2)
			152	152-200	WING NUT (2)

NOTE: Many of www.pennparts.com schematics include changes that were either made by Penn, or errors found and corrected by our parts dept.
SBT Ver. 101213