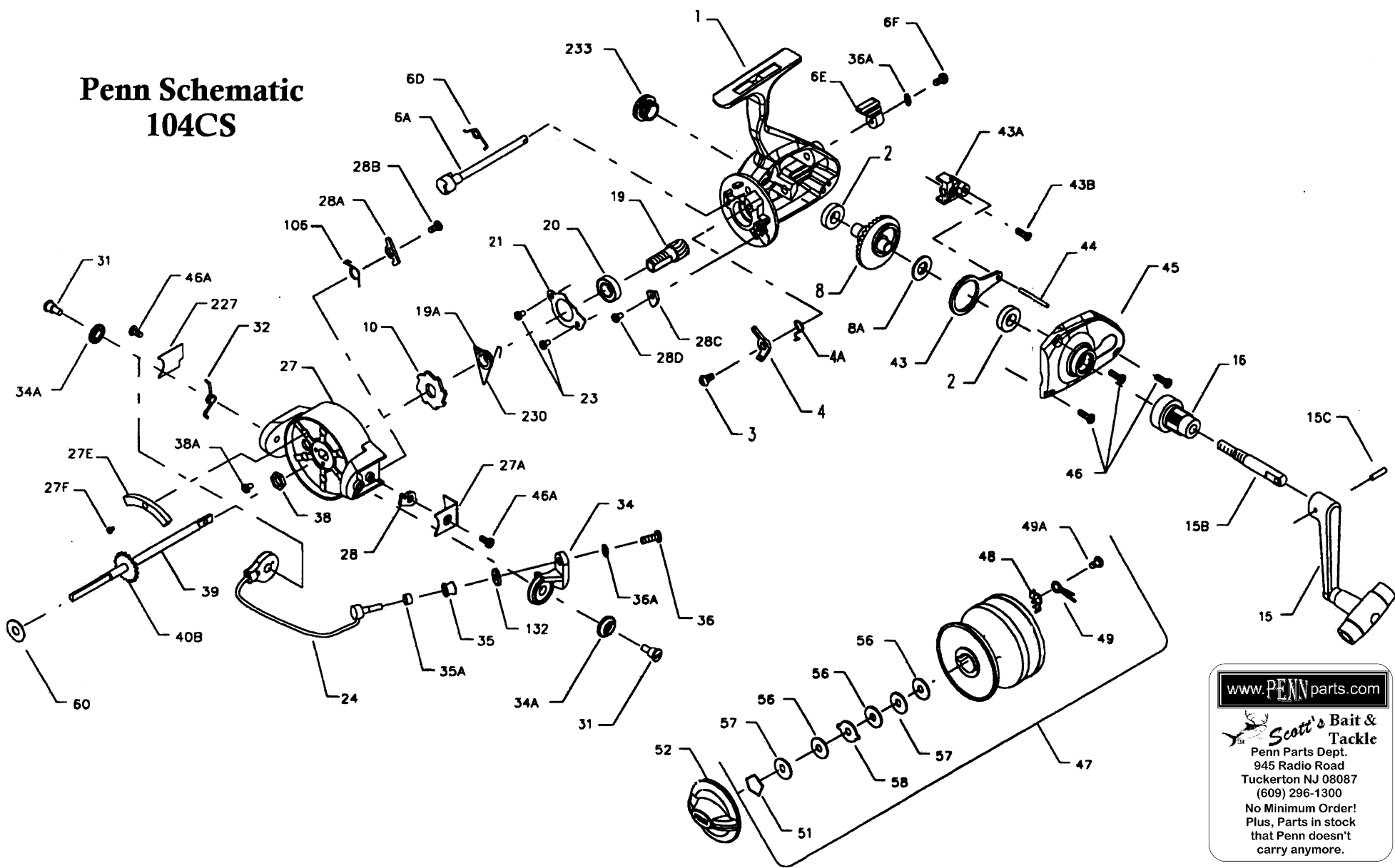


# Penn Schematic 104CS



www.PENNparts.com

**Scott's Bait & Tackle**  
 Penn Parts Dept.  
 945 Radio Road  
 Tuckerton NJ 08087  
 (609) 296-1300  
 No Minimum Order!  
 Plus, Parts in stock  
 that Penn doesn't  
 carry anymore.

## Penn Reel Parts list for Model: 104CS

KEY NO	PART NO.	DESCRIPTION	KEY NO	PART NO.	DESCRIPTION
1	1-104CS	HOUSING W/BUSHING & EMBLEM	32	32-104	BAIL SPRING
2	2-103	HOUSING BUSHING (2 REQ.)	34	34-104CS	BAIL ARM
3	3-104	DOG MOUNTING SCREW	34A	34A-103	BAIL ARM SPACER (2 REQ.)
4	4-104CS	DOG	35	35-103CS	LINE ROLLER
4A	4A-104CS	DOG SPRING	35A	35A-103CS	LINE ROLLER BUSHING
6A	6A-104CS	ECCENTRIC	36	36-103CS	BAIL STUD SCREW
6D	6D-104	ECCENTRIC SPRING	36A	36A-103	LOCK WASHER (2 REQ.)
6E	6E-103	ECCENTRIC LEVER	38	38-104	ROTOR NUT
6F	6F-101	ECCENTRIC LEVER MOUNTING SCREW	38A	38A-103CS	ROTOR NUT SCREW
8	8-104	MAIN GEAR ASSEMBLY	39	39-104CS	CROSSWIND SHAFT
8A	8A-103	MAIN GEAR SHIM	40B	40B-104CS	CLICK RATCHET
10	10-104	ANTI-REVERSE RATCHET	43	43-104	CROSSWIND ARM
15	15-104	HANDLE	43A	43A-104CS	CROSSWIND BLOCK
15B	15B-104	HANDLE SHAFT	43B	43B-105	CROSSWIND ARM SCREW
15C	15C-103	HANDLE PIVOT PIN	44	44-104	CROSSWIND ARM PIN
16	16-103	HANDLE COLLAR	45	45-104CS	HOUSING COVER W/BUSHING
19	19-104	PINION GEAR	46	46-103	HOUSING COVER SCREW (4 REQ.)
19A	19A-104CS	PINION GEAR SPACER	46A	46A-103	ROTOR END COVER SCREW (2 REQ.)
20	20-104	BALL BEARING	47	47-104CS	SPOOL (COMPLETE)
21	21-104	BEARING COVER	48	48-103CS	CLICK TONGUE
23	23-103	BEARING COVER SCREW (2 REQ.)	49	49-103CS	CLICK SPRING
24	24-104CS	BAIL WIRE	49A	22-103CS	CLICK SPRING SCREW
27	27-104CS	ROTOR CUP	51	51-104	RETAINING RING
27A	27A-104	ROTOR END COVER	52	52-104CS	DRAG KNOB
27E	27E-104CS	BALANCE WEIGHT	56	56T-104	DRAG WASHER (TEFLON) (3 REQ.)
27F	27F-104CS	BALANCE WEIGHT SCREW	57	57-104	DRAG WASHER (KEYED) (2 REQ.)
28	28-104	TRIP LEVER	58	58-104	DRAG WASHER (EAR)
28A	28A-104	CAM LEVER	60	60-103	THRUST WASHER (TEFLON)
28B	28B-103	CAM LEVER MOUNTING SCREW	106	106-104	CAM LEVER SPRING
28C	28C-104	TRIP CAM	132	132-103CS	ROLLER WASHER
28D	46A-103	CAM MOUNT SCREW	227	227-104	BAIL SPRING COVER
31	31-103	BAIL ARM SCREW (2 REQ.)	230	230-104CS	SILENT DOG SPRING
			233	233-104	HOUSING HANDLE CAP

NOTE: Many of [www.pennparts.com](http://www.pennparts.com) schematics include changes that were either made by Penn, or errors found and corrected by our parts dept.