

 **Troll-master**
Contributing to your success

 **Leahorse**



Adjustable Downrigger Swivel Base

Owner's Manual

We at Troll-master thank you for purchasing our product.

The adjustable downrigger base is designed to accept Penn© or Cannon© downrigger mounting plates. The base rotates a complete 360° and locks in 36 different positions allowing virtually any angle for your downrigger. This feature provides effortless re-positioning of the downrigger boom suitable for rigging, docking or towing.

The fact that this swivel base is designed to work with leading downrigger manufacturers provides fishermen the liberty to switch from manual to electric or from one brand to another without any additional investments or re-rigging efforts.

NOTE: The swivel base will only rotate left when not secured to the mounting surface. Please do not be alarmed - it will freely rotate any direction once properly installed.

Installation Instructions:

Carefully select the location of the swivel base on your boat. Make sure that you have enough swing clearance for proper operation. Use the swivel base cover (part number DSS-S31036) as a template to mark the holes to be drilled. Make sure that the hole pattern is positioned so that you will have enough clearance and reach to install the mounting hardware (provided).

The Swivel base comes pre-assembled. Note the oval shaped hole on the swivel base top. The oval hole provides access to each of the four mounting screws.

- 1) Unlock the base by turning the finned lock release ring counter-clockwise*
- 2) Turn the swivel top until the oval mounting hole is above the mounting screw.*
- 3) secure the screw without over tightening.*

Repeat steps 1-3 for all remaining screws.

After the base is installed select appropriate cover plate and the mounting plate for your downrigger.

Note: The mounting plate bolts should not exceed ½ inch in depth into the swivel base top.

- Use Cover plate with square 2 ½ x 2 ½ inch mounting pattern for Cannon© downrigger installation (Part number DSS-S31035)*
- Use Cover plate with square 2 □ x 3 ½ inch mounting pattern for Penn© downrigger installation (Part number DSS-S31036)*

Parts Diagram & Schematics

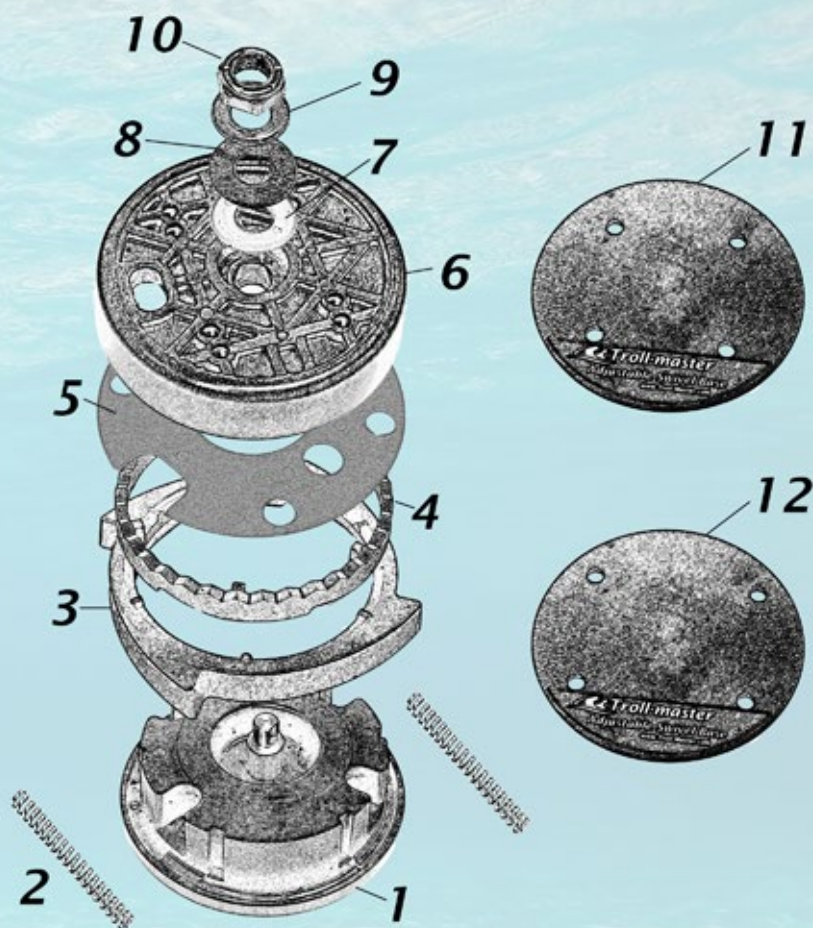


Diagram	Part Number	Description
1	DSE-S31025	Swivel Base Bottom
2	DSS-S31026	Return Spring
3	DSP-S31027	Lock Release ring
4	DSP-S31028	Lock Ring
5	DST-S31029	Teflon base Washer
6	DSI-S31030	Swivel Base top
7	DST-S31031	Teflon Washer - TOP
8	DSS-S31032	Base top washer fixed
9	DSS-S31033	Base Top Washer arched
10	DSS-S31034	Locking Nut
11	DSS-S31035	Plate cover Square pattern (for Cannon® Bases installation)
12	DSS-S31036	Plate cover Rectangular pattern (for Penn® Bases Installation)

Our Mission

Troll-Master Inc. is committed to the development and manufacturing of the high quality parts and accessories for the fishing industry.

Our goal is to deliver a good product at a competitive price while maintaining the highest quality standards.

Our Team

Troll-Master's Team consists of professional engineers, tournament winning captains, fishing enthusiasts and manufacturing experts.

Our R&D works in conjunction with real customers across the country utilizing hands on experience and cutting edge technology to design our products.

Our Products

All our products come with a 10 year manufacturer's warranty. There is no fine print, no exclusions and no limitations.

We will always stand behind our products and will gladly provide Customer Service and Technical support to our customers.

We are confident in the quality of the products, functional design and the materials used to produce them.

Warranty

Troll-master Inc warrants to the original purchaser any defect in material or workmanship for the period of 10 years since the date of the original retail purchase.

Troll Master Inc will either repair or replace the product free of charge.

